



NW TRIBAL COMMUNITY HEALTH PROVIDER PROGRAMS: BUILDING A BRIDGE FROM COMMUNITY HEALTH REPRESENTATIVE TO CHP, BHAP AND DHA/T

Dental Health Aide/Therapist

Community Health Aide/Practitioner

Behavioral Health Aide/Practitioner

Carrie Sampson Samuels, Katie Hunsberger, Kari Ann Kuntzelman



OUTLINE OF TOPICS

- Provide information on improving health disparities among American Indian/Alaska Native communities by utilizing the Community Health Aide Program
- Provide information on career opportunities for American Indian/Alaska Native communities in the Pacific Northwest
- Understanding solutions to disparities in American Indian/Alaska Native populations

N.P.A.I.H.B.
(NORTHWEST PORTLAND AREA INDIAN HEALTH BOARD)

NON-PROFIT

SERVES 43 TRIBES IN

- OREGON
- WASHINGTON
- IDAHO

DELEGATE FROM EACH TRIBE

CULTURALLY AWARE PROVIDERS

SAFE CARE

C.H.A.P. MATTERS

EXTENDS REACH

DECREASE TRAVEL

TAILORED PROGRAMS

ELDER GATHERINGS

C.H.A.P. EXPANSIONS UNDERWAY

BENEFITS + RESOURCES AVAILABLE TO STUDENTS

NORTHWEST INDIAN COLLEGE

HERITAGE UNIVERSITY

BHA EDUCATION PROGRAM

CERTIFICATION BOARD IS NOW AVAILABLE

C.H.A.P.
(COMMUNITY HEALTH AIDE PROGRAM)

- BEHAVIORIAL
- DENTAL
- COMMUNITY

EPI-CENTER



STARTED IN ALASKA

PROVIDERS UNDERSTOOD TRIBAL CULTURE

APPLIED TO N.P.A.I.H.B.

T.C.H.P.P.
(TRIBAL COMMUNITY HEALTH PROVIDER PROJECT)

LOGOS DEVELOPED BY TRIBAL ARTISTS

PORTLAND APPLIED C.H.A.P.



Sampson-Samuels

Tribal Community Health Provider Project:

Advancing Tribal Health Aids Among the Northwest



DENTAL D.H.A.T.



WHO DO B.H.A. SERVE

ALL AGES

TRIBAL COMMUNITIES

ENTIRE COMMUNITIES

BHA 1-4

COMMUNITY MEMBERS

NATURAL HELPERS



B.H.A.
BEHAVIORIAL HEALTH AIDE

BEHAVIORIAL BHA/P

WHO CAN BE A B.H.A.

LIVED EXPERIENCES

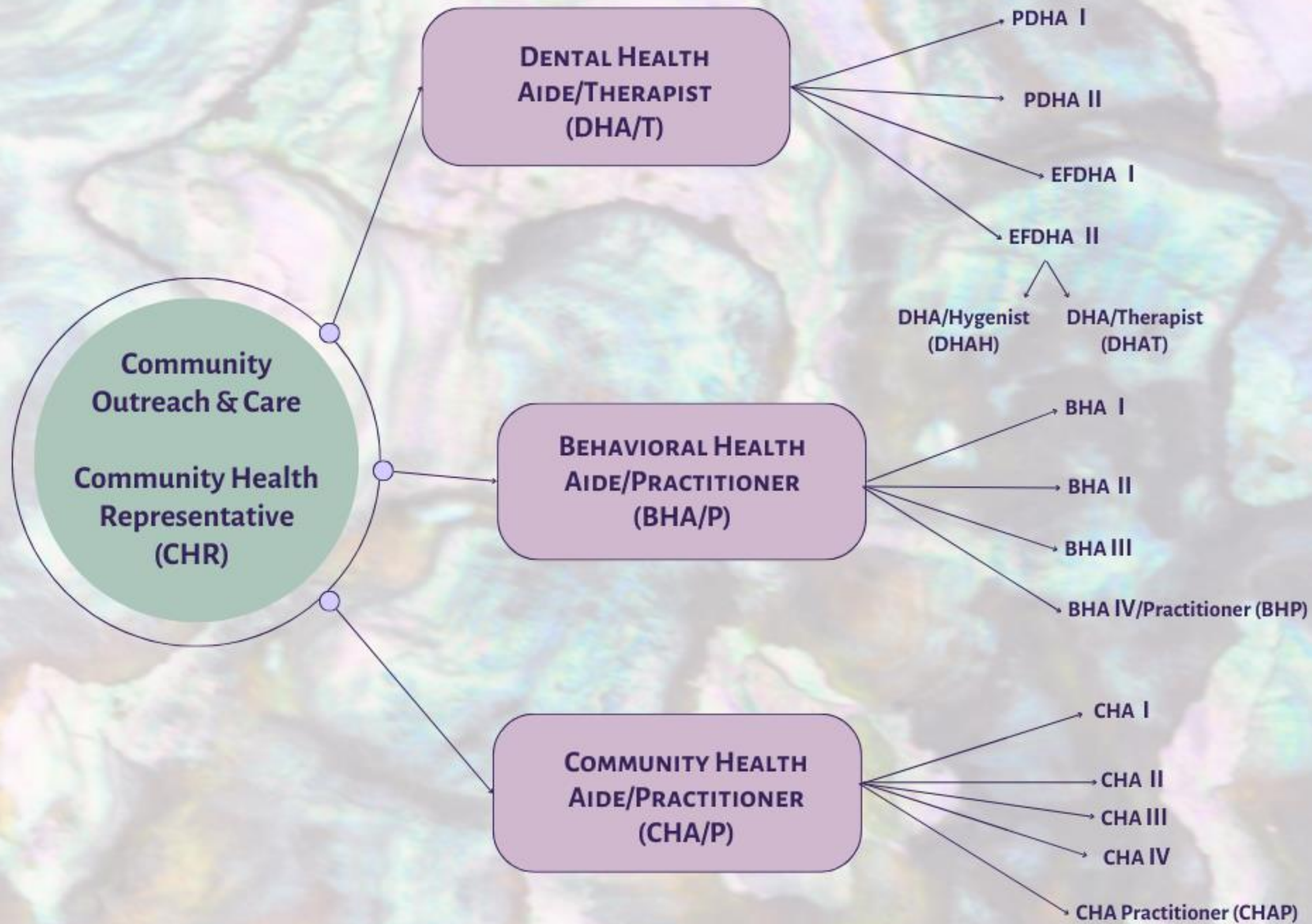
GOOD LISTENERS

CHAP Addresses Social Determinants of Health



CHAP ALASKA ORIGINS



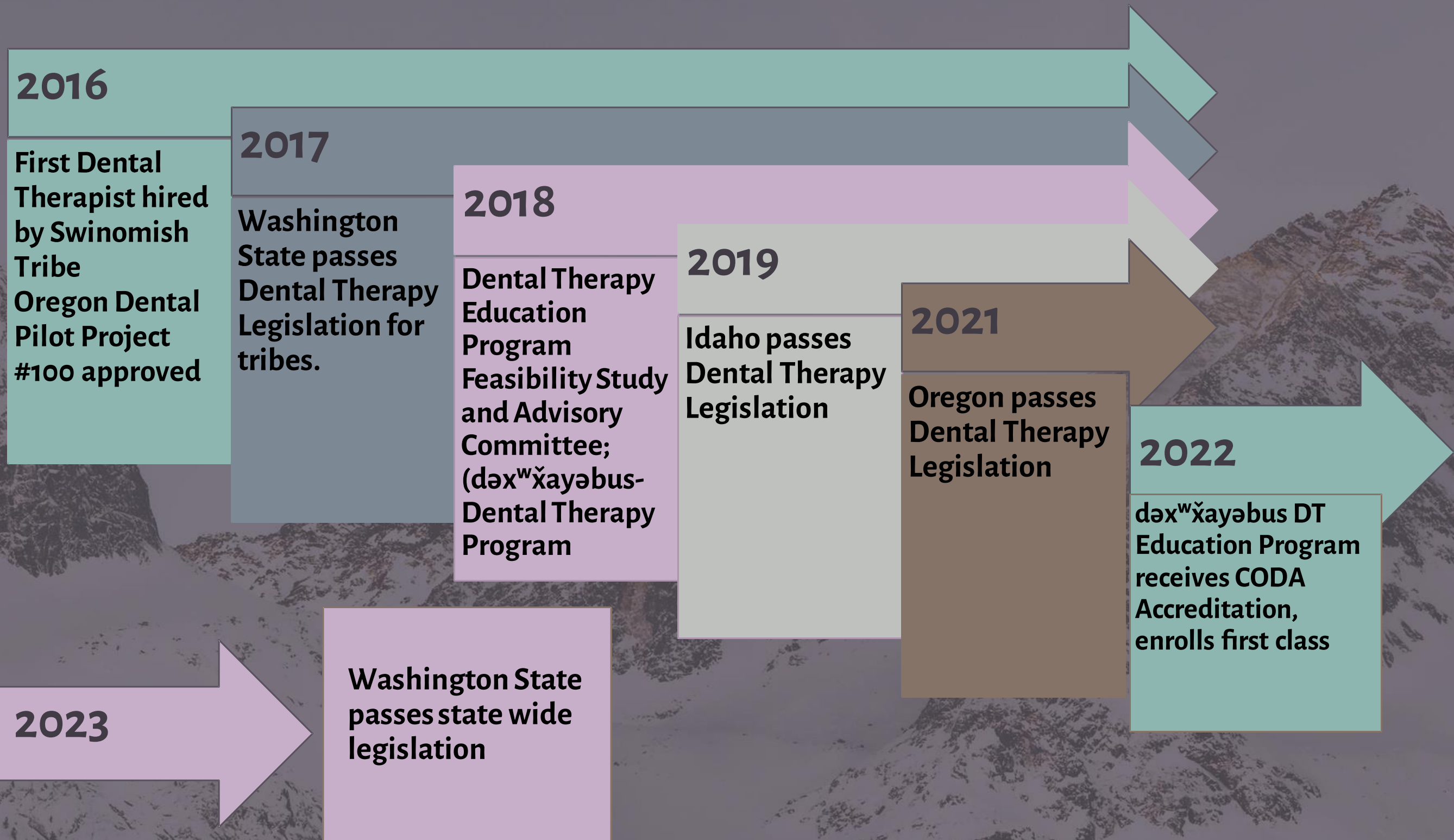




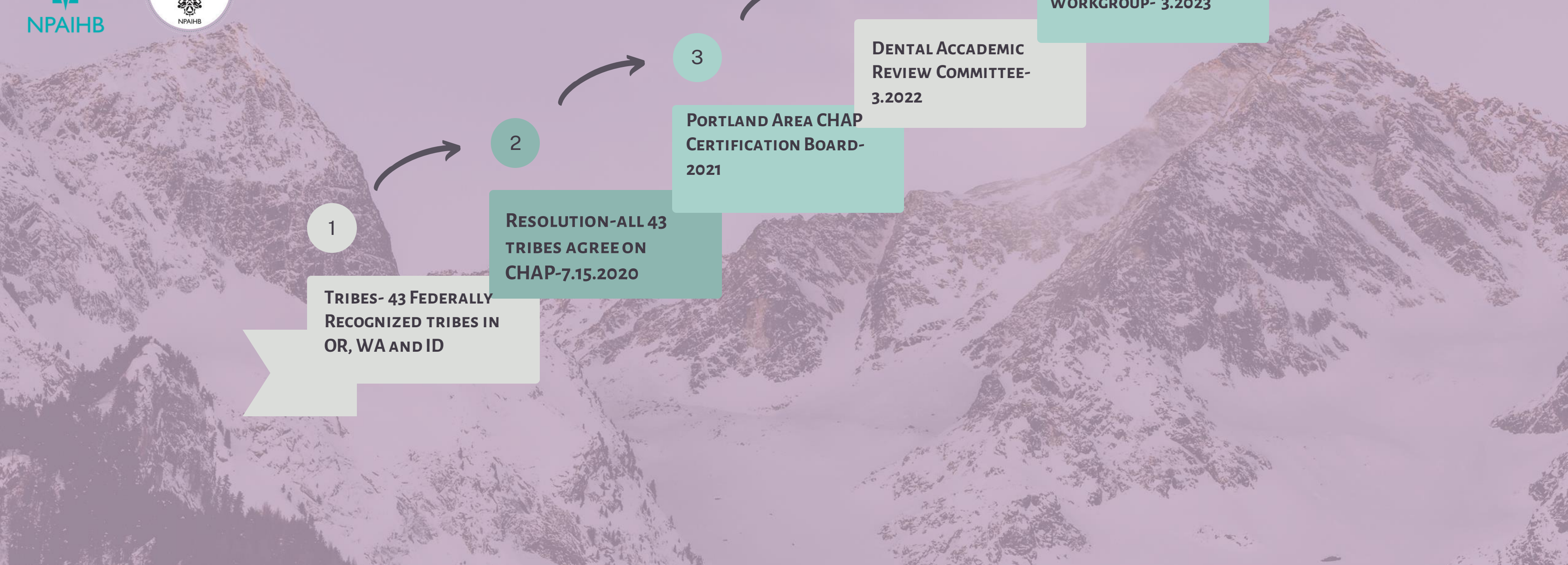
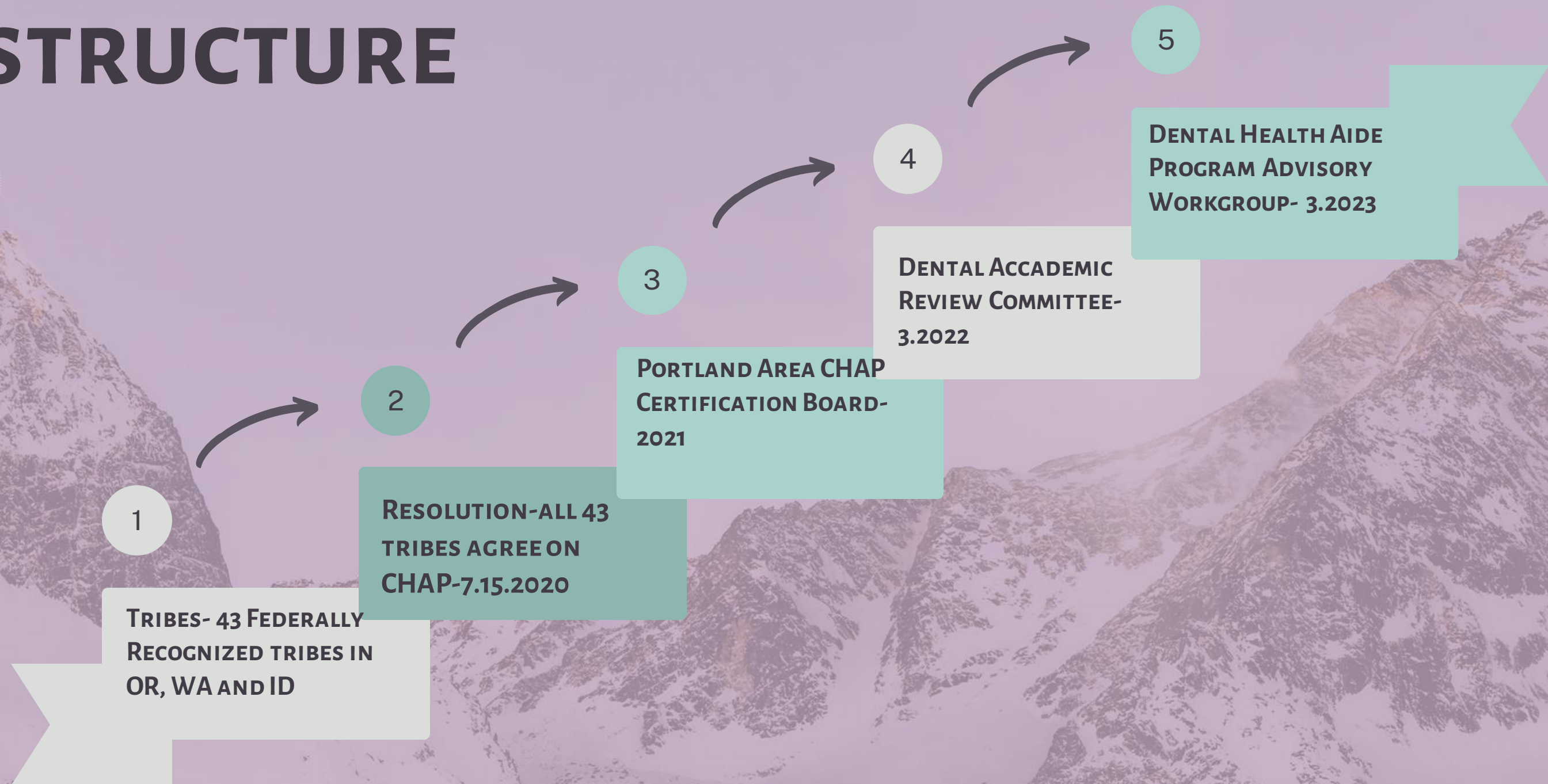
THE PACIFIC NORTHWEST'S

**DENTAL HEALTH
AIDE PROGRAM**

DENTAL THERAPY TIMELINE IN WA, OR, ID



DENTAL HEALTH AIDE PROGRAM INFRASTRUCTURE



Portland Area Standards and Procedures



Portland Area Community Health Aide Program Certification Board – Standards and Procedures
AMENDED [3/30/2022]

Article 30. Standards for Dental Health Aides

History:

Sec. 2.30.010. Supervision of Dental Health Aides.¹

- (a) **Generally.** The supervision of a dental health aide may be general, indirect, or direct, as defined in section 2.30.010(b) [supervision of DHAs; (definitions of levels of supervision)], provided that:
- (1) the person providing the supervision must satisfy the criteria provided under section 2.10.010(a)(9) [initial qualifications; general requirements (supervision & day-to-day direction)];
 - (2) the dental health aide must be supervised at whatever level of supervision is required for the specific care being provided;
 - (3) a dentist or dental health aide therapist providing supervision may impose a higher level of supervision on the dental health aide than that provided in this article; and
 - (4) when a dental health aide therapist requires supervision, the supervision must be provided by a dentist.
- (b) **Definitions of Levels of Supervision.** For the purposes of this article:
- (1) “Direct supervision” means the dentist or dental health aide therapist in the dental office personally diagnoses the condition to be treated, personally authorizes the procedure, and before dismissal of the patient evaluates the performance of the dental health aide;
 - (2) “General supervision” means the dentist or dental health aide therapist has authorized the procedures and they are being carried out in accordance with standing orders issued to a specific dental health aide; and
 - (3) “Indirect supervision” means a dentist or dental health aide therapist is in the facility, authorizes the procedures via the standing orders, and remains in the dental facility while the procedures are being performed by the dental health aide.

History:

Sec. 2.30.020. Scope of Practice Prior to Certification as a Dental Health Aide.

- (a) **Minimum Requirements.** A person who satisfies the requirements of subsection 2.30.020(b) [scope of practice prior to certification as a DHA; (employment)] may perform services of a certified dental health aide prior to being certified under this article to the extent the services are performed:
- (1) as part of training required for certification;
 - (2) as part of a required preceptorship under sections 2.30.100(b) [PDHA I training & education requirements; (preceptorship)], 2.30.220(c)(1)(B) [sealant requirements; training, education & preceptorship; (sealants during training)] or (c)(2) [sealant requirements; training, education & preceptorship; (preceptorship)], 2.30.230(d) [dental prophylaxis requirements; (preceptorship)]; 2.30.240(c)(1)(D) [dental radiology requirements; training, education & preceptorship; (radiographs during training)] or (c)(2) [dental radiology requirements; training, education & preceptorship; (minimum number radiographs)], 2.30.250(c) [dental assistant function requirements; (training, education & preceptorship)], 2.30.260(d) [ART requirements; (preceptorship)], 2.30.270

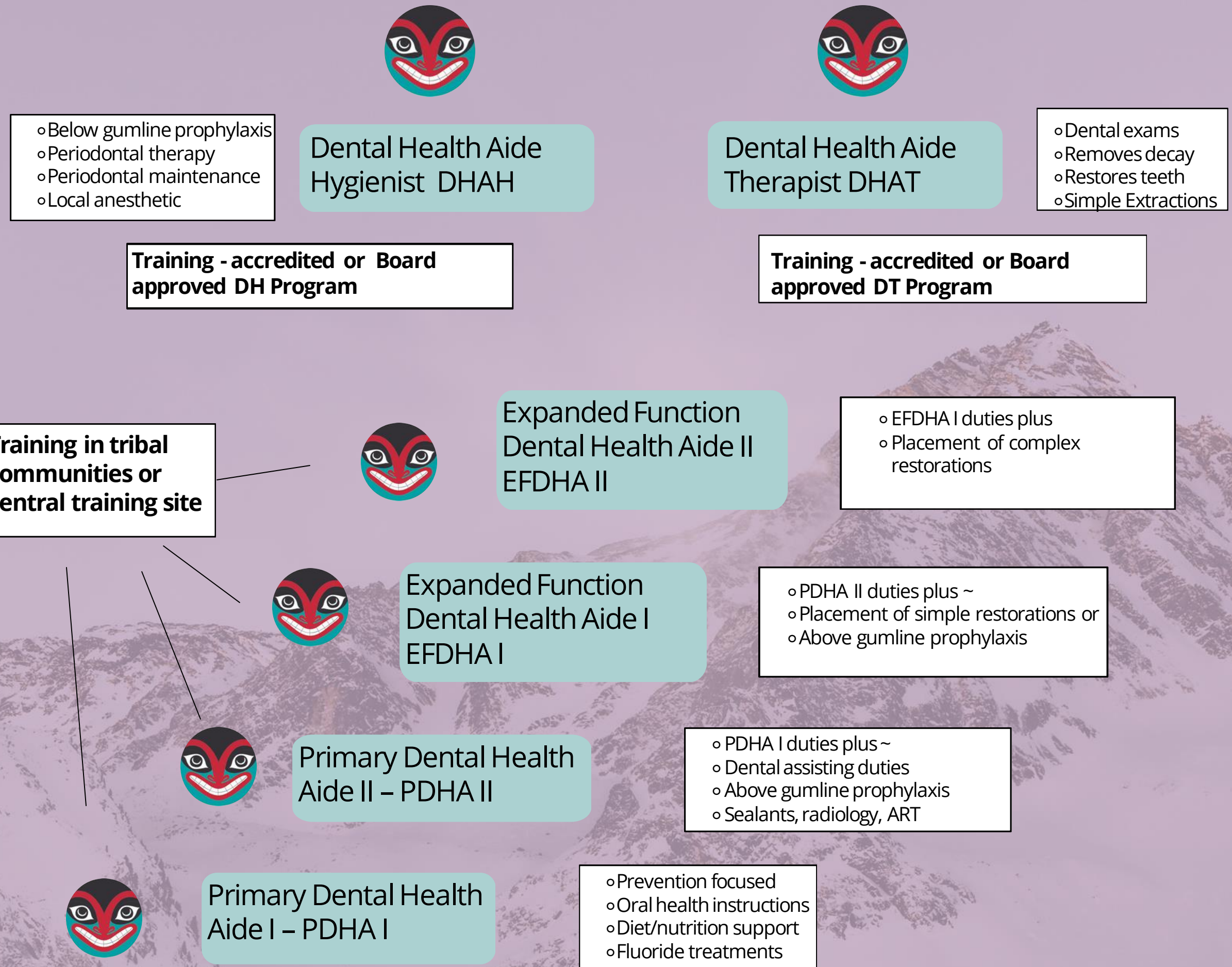
tchpp.org/aboutpaccb

<https://acrobat.adobe.com/link/track?uri=urn%3Aaaid%3Asc%3AUS%3A4f6ce74f-5d8d-3bca-967b-d4ded32be9f4>



The Dental Health Aide Program

- A series of accessible oral health careers
- Working in Indian Health Service and Tribal Communities
- All types of DHAs are supervised by a dentist or DHAT
- Federally certified dental providers



For more information please
contact:

pready@npaihb.org

kkuntzelman@npaihb.org

mdavis@npaihb.org

DENTAL HEALTH AIDE PROGRAM

<https://www.tchpp.org/about-dhas>



PRIMARY DENTAL HEALTH AIDE I PDHA I	PRIMARY DENTAL HEALTH AIDE II PDHA II	EXPANDED FUNCTIONS DENTAL HEALTH AIDE I EFDHA I	EXPANDED FUNCTION DENTAL HEALTH AIDE II EFDHA II	DENTAL HEALTH AIDE HYGIENIST DHAH	DENTAL HEALTH AIDE THERAPIST DHAT
Required Courses	Required Courses	REQUIRED COURSES	Required Courses	Required training & education	Required training & education
	PDHA I and:	PDHA II and:	EFDHA I and:		
Core Curriculum	Advanced Dental Procedures	Basic Restorative Functions	Advanced Restorative Functions	Accredited DH Program or Board approved DHAH Program	Accredited DT Program or Board Approved DHAT Program
Primary Oral Health Promotion and Disease Prevention	Community Based Dental Practice	Prefabricated Crown Placement			
	<i>One or more of the following:</i> Dental Assistant Functions Sealants Dental Prophylaxis Radiology Atraumatic Restorative Treatment	Preceptorship - 6 months or 800 hrs	Preceptorship - 6 months or 800 hrs		
Preceptorship - specific # of procedures	Preceptorship (s) - specific # of procedures				

DHAs INCREASE ACCESS AND EFFICIENCY



MARISSA GARDNER, DHAT, LDT, OREGON, 2019

PDHA

- OHI, motivational interviewing
- Polish, antimicrobials, fluoride
- Dental Assisting

EFDHA

- Place Restorations
- PDHA services
- Above gumline prophylaxis

DHAH

- RDH procedures including local anesthesia

DHAT

- Exam, diagnose
- Prep, restore and finish
- Non-surgical extractions
- supervising PDHAs & EFDHAs

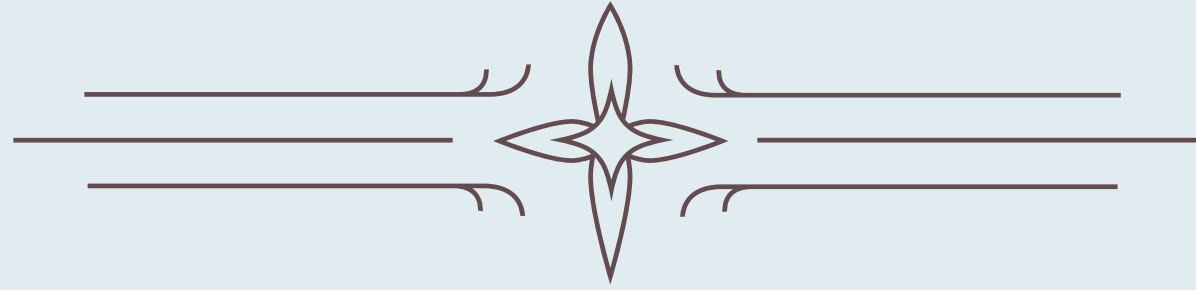
DENTIST

- Complex services (RCT, crowns, surgery)
- Supervising Dental Health Aides

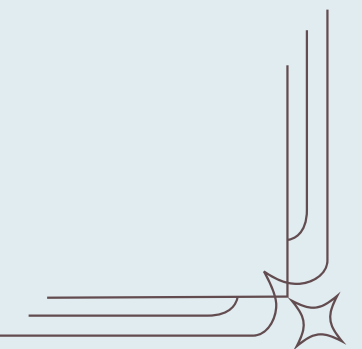


THE PACIFIC NORTHWEST'S
**COMMUNITY
HEALTH
AIDE
PROGRAM**

COMMUNITY HEALTH REPRESENTATIVE



The Community Health Representative (CHR) Program is a unique concept for providing health care, health promotion, and disease prevention services. CHRs have demonstrated how they assist and connect with the community, and their work has become essential to the spectrum of Tribal community oriented primary health care services. CHRs are great advocates, in part, because they come from the communities they serve and have tribal cultural competence. Their dedicated work has assisted many to meet their healthcare needs. The health promotion and disease prevention efforts that CHRs provide have also helped people from the community improve and maintain their health.





Community Health Aide/Practitioners

CHA/Ps are certified primary and emergency care clinicians who have close cultural ties and connections to the communities they serve. They work within the tribal health and human systems and practice under the supervision of a licensed clinical provider. Community Health Aides/Practitioners can work in the clinic or doing home visits and are an extension of the health care team.



COMMUNITY HEALTH CLINICAL PATHWAY

1) **Community Health Representative (CHR)**



2) **Community Health Aide (CHA)**



3) **Community Health Practitioner (CHP)**

CHR CURRICULUM

IN COLLABORATION WITH IDAHO STATE UNIVERSITY



CHR Core Course

Unit 1: Intro to the Course; Roles and Boundaries
Unit 2: Effective Communication
Unit 3: Cultural Competency
Unit 4: Key Concepts in Health
Unit 5: Outreach
Unit 6: Organization, Time Management and Documentation
Unit 7: Navigating Health Insurance
Unit 8: Individual and Community Assessment
Unit 9: Crafting and Presenting a Case
Unit 10: Advocacy and Community Capacity Building
Unit 11: Introduction to Health Literacy
Unit 12: Care Coordination and Systems Navigation
Unit 13: Education to Promote Healthy Behavior Change
Unit 14: Self Care and Customer Service
Unit 15: Behavioral Health and Substance Abuse
Unit 16: Oral Health
Unit 17: Cardiovascular Health
Unit 18: Diabetes
Unit 19: Family Care

CHR Advanced Course

Unit 1: Intro to Community Health Programs
Unit 2: Medical Documentation
Unit 3: Anatomy and Physiology
Unit 4: Vital Signs
Unit 5: Traditional Foods and Herbal Remedies
Unit 6: Dental health and hygiene
Unit 7: Maternal Child Health
Unit 8: Medication Skills
Unit 9: Respiratory Disease
Unit 10: Medical Math
Unit 11: Common Cancers among AI/AN
Unit 12: Behavioral Health Issues

COMMUNITY HEALTH **AIDE** CURRICULUM

Training Outline

- BLS training
- 320 hours of didactic training
- 200 hours clinicals
- 80 patient encounters
- Total: 520 hours total to earn a CHA Certificate

Scope of Work

- See acute care patients.
- Triage basic emergency patients
- See diabetic patients: diabetes chronic care, including diabetic foot care.
- See hypertensive patients: chronic care visits to include regular BP checks.
- See asthmatic patients: to include spirometry, MDI instruction, and asthma action plans.
- STI screening and prevention education
- Elder care and screening
- Recheck or follow up visits after hospitalizations.





COMMUNITY HEALTH PRACTITIONER CURRICULUM

Training Outline

- 320 hours of didactic training
- 400 hours clinicals
- 132 patient encounters
- Preceptorship
- Final Assessment
- Total: 720 hours total to earn a Community Health Practitioner Certificate

Scope of Work

In addition to the CHA scope of work CHP's can also do the following:

- See return prenatal patient's
- See well child patient's
- See Addiction Medicine patient's
- Preventative health: Pap Smears, CBE's
- Emergent Care

THE PACIFIC NORTHWEST'S

BHA EDUCATION PROGRAM

BEHAVIORAL HEALTH
AIDE PROGRAM





BEHAVIORAL HEALTH AIDE (BHA)

A BACKGROUND

BHAs have a wide variety of skills, knowledge, and talents. They are advocates, natural healers, counselors, empaths, and natural helpers who are responsive to the need for mental/behavioral health services in their Tribal communities. They are individuals whom are committed to providing individual and community support to address the challenges that Native peoples face in regards to substance misuse, mental health struggles and other health disparities.

BHA SCOPE OF PRACTICE

BHA levels 1-4/P vary depending on coursework, work experience, and incoming credits for higher education. All work must be completed under a Master's level or above clinician.

01

- Wellness promotion
- Education advocacy
- Community needs assessment
- Screening/intake/referral
- Crisis management
- Case management
- Orientation to Services
- Life skills development
- Psycho-education
- Individual & group interventions

02

- Substance use disorder (SUD) assessment
- SUD diagnosis
- SUD treatment planning
- SUD treatment implementation
- Community readiness assessment
- Individual group, family counseling

03

- Treatment planning & implementation for co-occurring disorders
- Child/outh services
- Clinical case review
- Quality assurance case review

04

- BHA mentoring
- Child-centered interventions

BHA/P 1-4 Clinical Practicum Details

BHA Level 1

- 25 hours
 - Providing initial intake and client orientation to services, including screening and initial intake paperwork with appropriate case documentation.
- 25 hours
 - Providing case management and referral with appropriate case documentation.
- 35 hours
 - Providing Tribal based community education, prevention, & early intervention with appropriate case documentation.

1

BHA Level 2

- 35 hours
 - Providing client substance use assessment and treatment planning using DSM patient placement criteria with appropriate case documentation.
- 30 hours
 - Providing rehabilitative services with appropriate case documentation.
- 25 hours
 - Providing community readiness evaluation & prevention plan development with appropriate case documentation.

2

3

- 25 hours
 - Providing initial intake and client orientation to services, including screening and initial intake paperwork with appropriate case documentation.
- 25 hours
 - Providing case management and referral with appropriate case documentation.
- 35 hours
 - Providing Tribal based community education, prevention, & early intervention with appropriate case documentation.

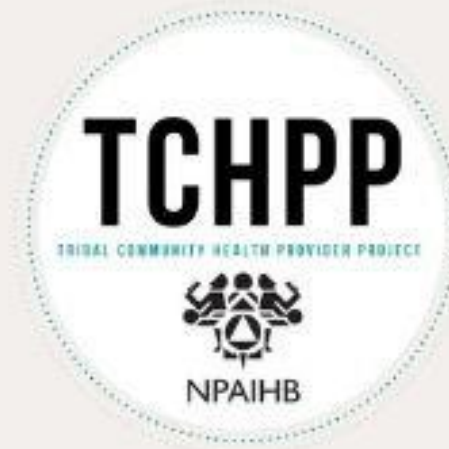
BHA Level 3

P

- 20 hours
 - Engaging, mentoring and supporting, as well as participating in supervision and evaluation of BHA 1, 2, and 3s based on their understanding of supervisee's level of knowledge and skills, professional goals, and behavior.
- 25 hours
 - Providing clinical team leadership by leading clinical team case review.
- 30 hours
 - Building cultural competence and relationality by learning about Native Tribal cultural context and developing a wellness framework within which positive therapeutic relationships can be developed.

BHA Level 4/Practitioner

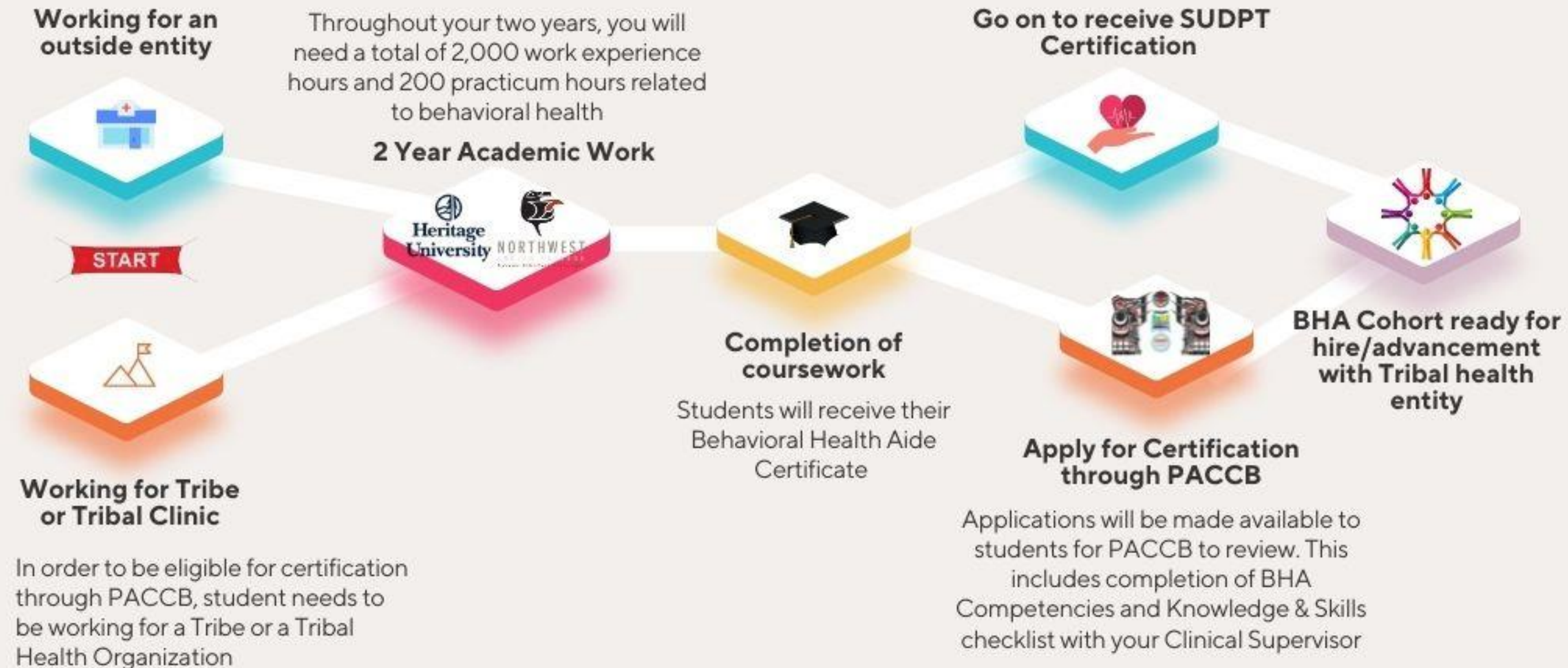
VISUAL REPRESENTATION OF YOUR 2 YEAR BHA EDUCATIONAL PATHWAY



BHA Route : 2023-2025

Those working for an outside entity need to have a signed contract with a local Tribe to complete work experience hours through their mental health or behavioral health department

An additional SUDPT Certification is available to you for an additional semester through Heritage University and NWIC



*Note: PACCB stands for Portland Area CHAP Certification Board
BHA stands for Behavioral Health Aide
SUDPT stands for Substance Use Disorder Professional Trainee

BHA ACADEMIC INSTITUTIONS

HERITAGE UNIVERSITY

- Private university in Toppenish, Washington near Yakama Nation
- Behavioral Health Aide Certificate
- Semester-Based
- Some in-person classes with some online sessions
- 2 year program



NORTHWEST INDIAN COLLEGE

- Tribal College on Lummi Nation in Bellingham, Washington
- Associate in Technical Arts in Behavioral Health Aide
- Quarter/Term-based
- Mostly online courses
- 2 year program



2,000 work experience hours = to 1 year of work under a Clinical Supervisor

200 hours of clinical practicum hours

- Knowledge & Skills Checklist
- Clinical Practicum Log



Thank
you!



Christina Peters, TCHPP Director



Katie Hunsberger, BHA Manager



Carrie Sampson Samuels,
CHAP Director



Miranda Davis, DHAP Director



Danica Love Brown, BH Director



Dolores Jimerson, BH Clinical Supervisor



Sasha Jones, CHAP Manager



Tanya Firemoon, TCHPP Contractor



Pam Ready, DHA Manager



MorningRose Tobey,
Education Data Coordinator



Lisa Griggs, TCHPP
Specialist



Stephannie Christian, TCHP
Education Program Director



Kari Ann Kuntzelman, DHA
Specialist

Thank You Partners!

