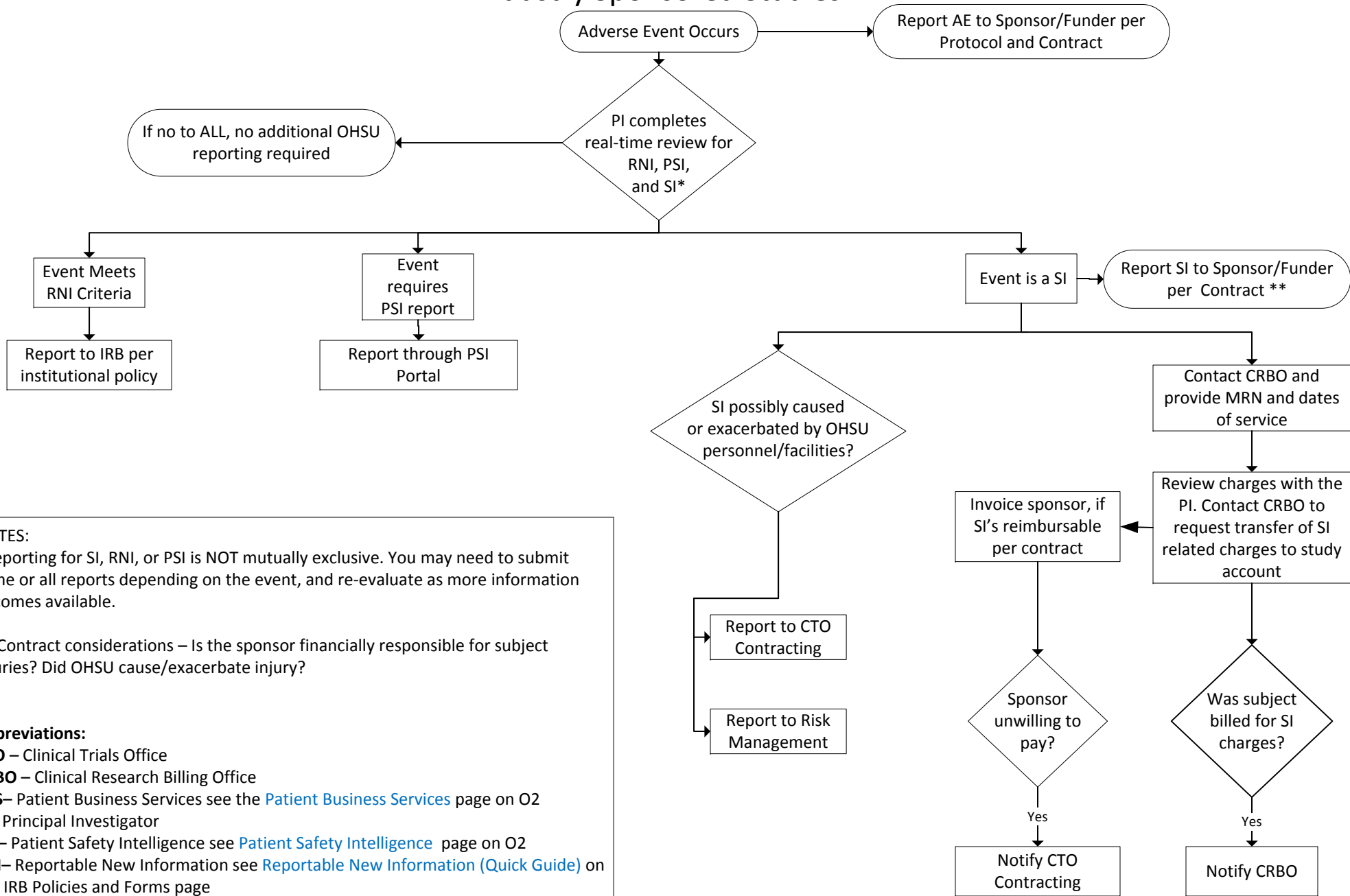


Industry Sponsored Studies



NOTES:
 *Reporting for SI, RNI, or PSI is NOT mutually exclusive. You may need to submit some or all reports depending on the event, and re-evaluate as more information becomes available.

** Contract considerations – Is the sponsor financially responsible for subject injuries? Did OHSU cause/exacerbate injury?

Abbreviations:
CTO – Clinical Trials Office
CRBO – Clinical Research Billing Office
PBS– Patient Business Services see the [Patient Business Services](#) page on O2
PI– Principal Investigator
PSI– Patient Safety Intelligence see [Patient Safety Intelligence](#) page on O2
RNI– Reportable New Information see [Reportable New Information \(Quick Guide\)](#) on the IRB Policies and Forms page
SI –Subject Injury see [Research Injury Reporting](#) on CRBO forms and policies page
UMG– University Medical Group see the [University Medical Group](#) page on O2