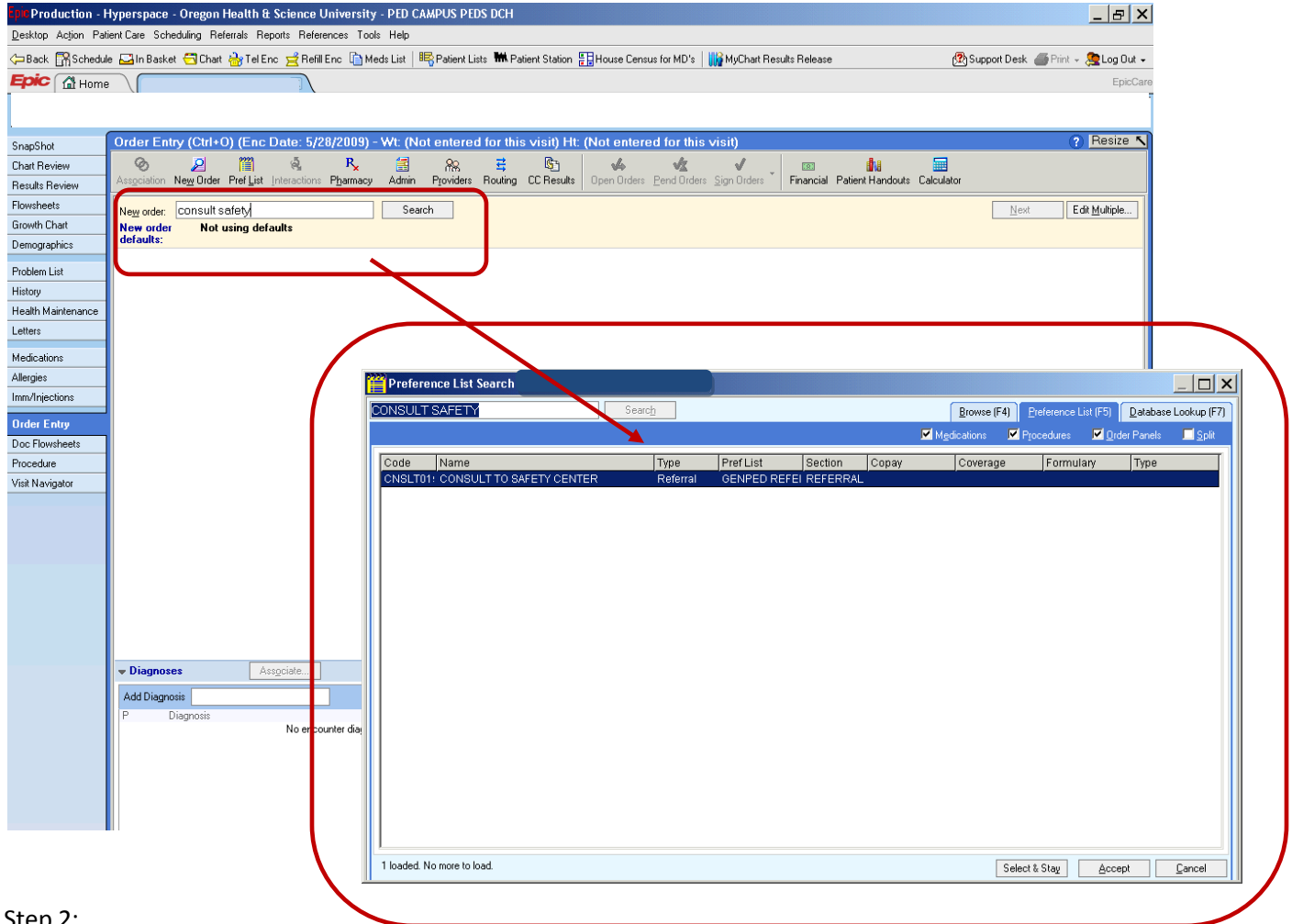


# Referring Patients to the Doernbecher Children's Safety Center via EPIC

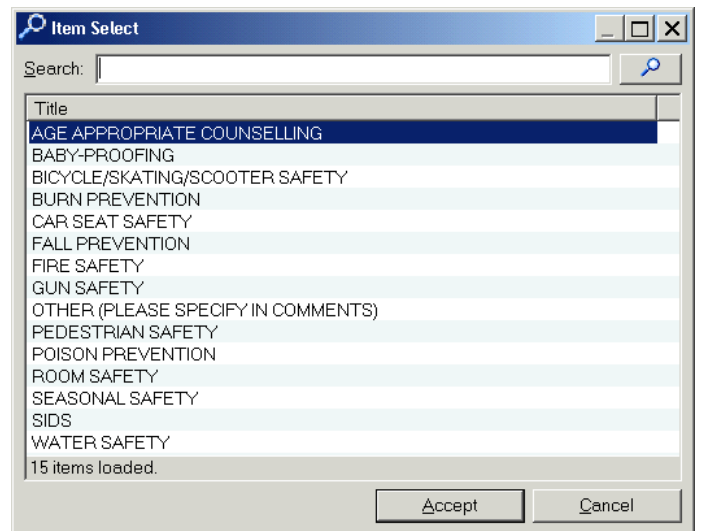
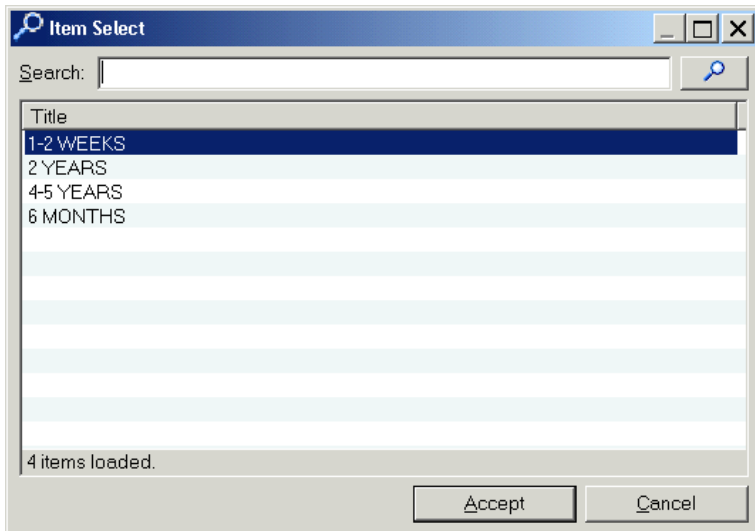
Step 1:

In "Order Entry" type "Consult Safety"



Step 2:

Pop-up windows will allow you to select the patient's age range and/or any safety counseling areas you would like the Safety Center staff to emphasize:



Step 3:

In the "Comments" field, please list any additional information that would be useful to the Safety Center staff in assisting this family. For example, would the family benefit from a subsidized or donated safety supply if funds allow? Did the family inquire specifically about a particular topic?

The screenshot displays the Epic EMR interface for an order entry form. The window title is "Order Entry (Ctrl+O) (Enc Date: 5/28/2009) - Wt: (Not entered for this visit) Ht: (Not entered for this visit)". The interface includes a top navigation bar with various tools and a left sidebar with navigation options. The main content area shows the order entry form for a "CONSULT TO SAFETY CENTER".

The form includes the following sections:

- Procedures (1 Order):** CONSULT TO SAFETY CENTER
- Priority:** Routine
- Class:** External Order
- Questions:**

Prompt	Answer	Comments
1. Age of Patient	6 MONTHS	
2. Areas of Emphasis	BABY-PROOF	
- Comments (F6):** Please provide this family with a subsidized child gate.
- Referral:** Location/POS, # of Visits, From: HARGUNANI, DANA, To, Expiration Date, Provider Search
- Dept Specialty:**
- Department:**
- Additional Order Details**

Buttons for "Accept", "Cancel", and "Remove" are present at the bottom right of the form. A "Back to top" link is also visible.