

## NEUROSCIENCES

## OHSU Clinical Neuroscience: A Symposium for Primary Care Providers April 27-28, 2019

This two-day CME course is designed to address clinical neuroscience topics for regional primary care providers. OHSU clinicians, including neurologists, neurosurgeons, and psychiatrists will discuss the latest advances in clinical topics, as well as best practices, to help primary care providers deliver enhanced care to their patients with neurological disorders.

### Special focus on

- Back pain treatments
- Neurologic diseases of aging
- Understanding and treating ADHD

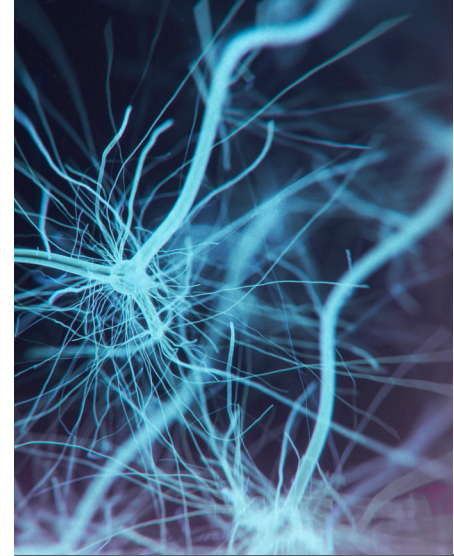
	Gold \$3,000	Silver \$1,500	Bronze \$1,000
Exhibit table with linens and electricity	Yes	Yes	Yes
Prominent position in exhibit hall	Yes	Yes	
Acknowledgement in program materials	Yes	Yes	Yes
Number of representative tickets	4	2	1

### Audience

- Family physicians
- Internists
- Physician assistants
- Nurse practitioners
- Registered nurses
- Naturopaths

### Speakers

Whitney Black, M.D., Dennis Bourdette, M.D., Hormozd Bozorgchami, M.D., Kim Burchiel, M.D., Alexandra Dimitrova, M.D., Hugues Duffau, M.D., Ph.D. Damien Fair, P.A.-C., Ph.D., Jordan Graeme, D.C., Monique Jones, M.D., Sarah Karalunas, Ph.D., George Keepers, M.D., Ph.D., Kimberly Mauer, M.D., Joseph Quinn, M.D., Ahmed Raslan, M.D., Nathan Selden, M.D., Katherine Ann Tacker, M.D., Khoi Than, M.D., Vivek Unni, M.D., Ph.D.



### Location

Robertson Life Sciences Building  
2730 S.W. Moody Ave.  
Portland OR 97201

### Exhibitor registration

Register online at [www.ohsu.edu/ocn](http://www.ohsu.edu/ocn)

### Questions?

Dina Girgenti-Iida: [girgenti@ohsu.edu](mailto:girgenti@ohsu.edu)  
or 503-494-6536

Linda Blanchette: [blanchli@ohsu.edu](mailto:blanchli@ohsu.edu)  
or 503-494-7526

### Deadline

Deadline for exhibitor registration is:  
**April 15, 2019**



**BRAIN**  
Institute