

Nerve Center

Your guide to patient referral

CONTENTS

Nerve Center	2
Our multidisciplinary team.....	3
Our services	4
Our expertise.....	4-5
Our philosophy.....	6

To refer a patient or consult with our team, please call:

503 494-4567

or toll free:

800 245-6478

www.ohsubrain.com/nerve



BRAIN INSTITUTE
Oregon Health & Science University

THE OHSU NERVE CENTER

The OHSU Nerve Center is staffed with specialized clinicians and researchers dedicated to helping patients with nerve diseases and disorders. We provide comprehensive clinical care, innovative research and treatment options for patients and consultation to physicians throughout the region.

Our goal is to collaborate closely with you, partnering for the best possible patient care and outcomes. Your patients with nerve conditions benefit from our comprehensive, multidisciplinary approach. Each patient is unique and receives an individualized care plan with input from the team, including neurosurgery, orthopaedics, pain management, physical medicine, plastic surgery, neurodiagnostics and rehabilitation.

By focusing on early intervention, our goal is to maximize patient outcomes, allowing for improved function and minimized pain.



OUR TEAM



Kim Burchiel, M.D.



Hans Carlson, M.D.



Nels Carlson, M.D.



Jau-Shin Lou, M.D.



Adam Mirarchi, M.D.



Robert Orfaly, M.D.



Joel Solomon, M.D.



Brett Stacey, M.D.

PATIENT SERVICES

OHSU's Nerve Center provides clinical diagnosis and comprehensive treatment across multiple specialties:

- Full consultative services for patients with peripheral nerve disorders related to:
 - Alzheimer's disease
 - Amyotrophic Lateral Sclerosis (ALS)
 - Aphasia
 - Bell's Palsy
 - Creutzfeldt-Jakob disease
 - Cerebrovascular disease
 - Epilepsy
 - Encephalitis
 - Huntington's disease
 - Multiple Sclerosis
 - Neuro-oncology
 - Pain management issues
 - Parkinson's disease
- We perform procedures including:
 - Nerve repair, transfer and decompression
 - Facial reanimation
 - Botox
 - Nerve blocks
 - Tendon transfer
 - Muscle release and rebalancing
 - Joint capsular releases
 - Limb salvage
 - Spinal cord stimulators
 - Psychological evaluation/treatment
- We offer diagnostic services across multiple specialties:
 - Electrodiagnosis
 - EMG

OUR EXPERTISE

Neurosurgery

OHSU's Department of Neurological Surgery provides more neurosurgical care than any other hospital in Oregon and is consistently rated as delivering the highest quality clinical outcomes of any hospital in the Portland area. Our neurosurgeons work in close collaboration with the team, offering expertise in a significant range of neurologic and neurosurgical conditions.

Orthopaedics

OHSU's Orthopaedics and Rehabilitation team has the skill and experience to help with nearly any condition or illness in children and adults. We treat all conditions and injuries affecting bones, joints, muscles, connective tissue and supporting structures (e.g., ligaments and cartilage).

OUR EXPERTISE (CONT.)

Pain Management

The OHSU Pain Management Team treats patients with complicated and/or chronic medical, surgical and neurological pain. We bring together specialists from many areas to address the range of issues brought about by pain.

Patient involvement and education are important components of our program, and we have received numerous accolades for our capabilities.

Plastic Surgery

The plastic surgery hand surgeons at OHSU focus on improving the form and function of the arm and hand, from your fingertips to your shoulder. Our highly trained doctors specialize in many types of upper extremity surgery.

Physical Medicine and Rehabilitation

Many neurological problems can be successfully treated without surgery. Our experts are specially trained to diagnose and treat these conditions, helping restore movement and function to patients disabled by disease or injury. Patients work closely with a team of physical therapists, occupational therapists and other rehabilitation professionals to develop a treatment plan tailored to their needs.

Neurodiagnostics

OHSU offers an extensive array of neurodiagnostic services to assess anatomy or functioning of the brain, spinal cord, muscles, nerves and blood flow. Our goal is to get a reliable and complete diagnostic test that you and your patients can use to help diagnose, manage, and monitor their nerve issues.

All of our studies are performed with the latest diagnostic equipment, and highly trained technologists are monitored by neurologists who have received specific training and experience in the field.

The tests and techniques that are used include:

- Electroencephalography (EEG)
- Electromyography (EMG)
- Quantitative sudomotor axon reflex (Qsart)
- Nerve conduction studies (NCS)
- Evoked potentials (EP)
- Polysomnography
- Ultrasound

OUR PHILOSOPHY

WHAT YOUR PATIENTS CAN EXPECT FROM OUR TEAM

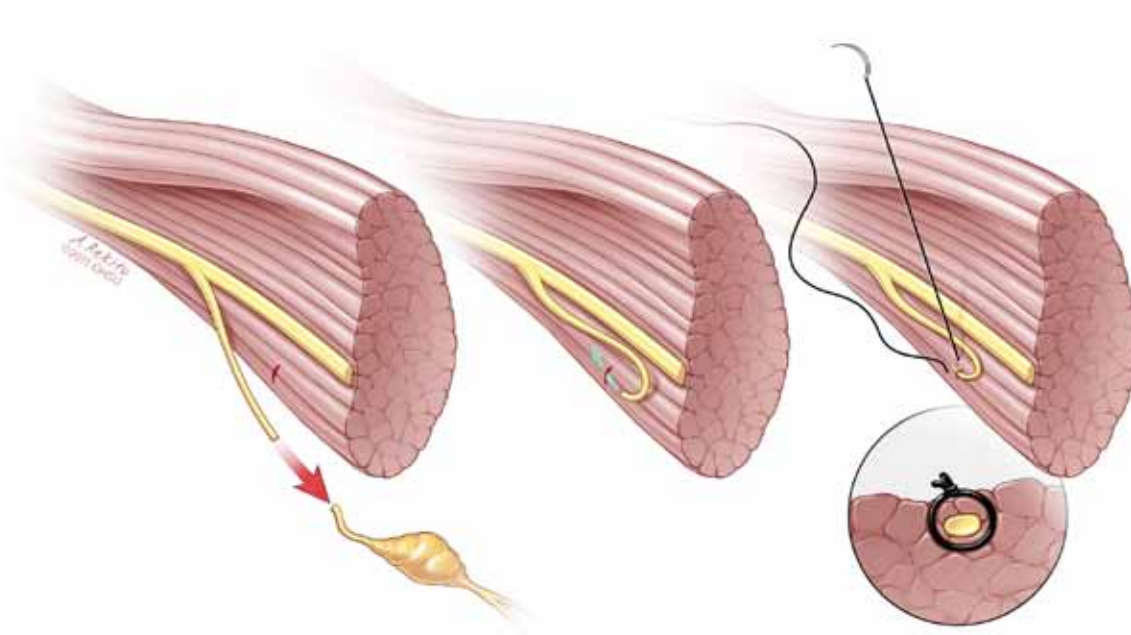
Scheduling & First Visit

Any patient you refer is given priority scheduling. We will schedule their first visit as soon as possible.

The OHSU Nerve Center is conveniently located at the OHSU Center for Health & Healing in the South Waterfront district, at the foot of the Portland Aerial Tram. Patients may be interviewed and examined by anyone from the team. Imaging studies and laboratory results are then collectively reviewed to render the best, multi-modal treatment plan for our most complex patients.

Occasionally, patients may need additional testing or an internal referral prior to rendering a treatment decision. This can often be done the same day to accommodate patients who travel long distances to receive medical care here at OHSU.

It is a privilege to partner with you in the care of your patients. To refer a patient or consult with our team, please call the OHSU Physician Consult & Referral Service at **800 245-6478** or **503 494-4567**. Or, download a referral form at www.ohsubrain.com/referral





BRAIN INSTITUTE
Oregon Health & Science University

To refer a patient or consult
with our team, please call:

503 494-4567

or toll free:

800 245-6478

Nerve Center

Mail code: CH8N
3303 S.W. Bond Avenue
Portland, Oregon 97239-3098
Tel: 503 494-4567
Fax: 503 346-4576

www.ohsubrain.com/nerve

*OHSU is an equal opportunity, affirmative
action institution. NEU 1198779 10/11*