

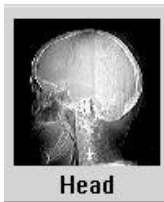
# CT Department Work Flow Tip Exam: Stereotactic Brain

QDOC Exam Codes Possible: [CBR-](#) or [CBR+](#)

**No Protocol Required read Remarks to Verify  
Stereotactic Brain**

Systems: 16 slice to 256 slice

Protocol Location:

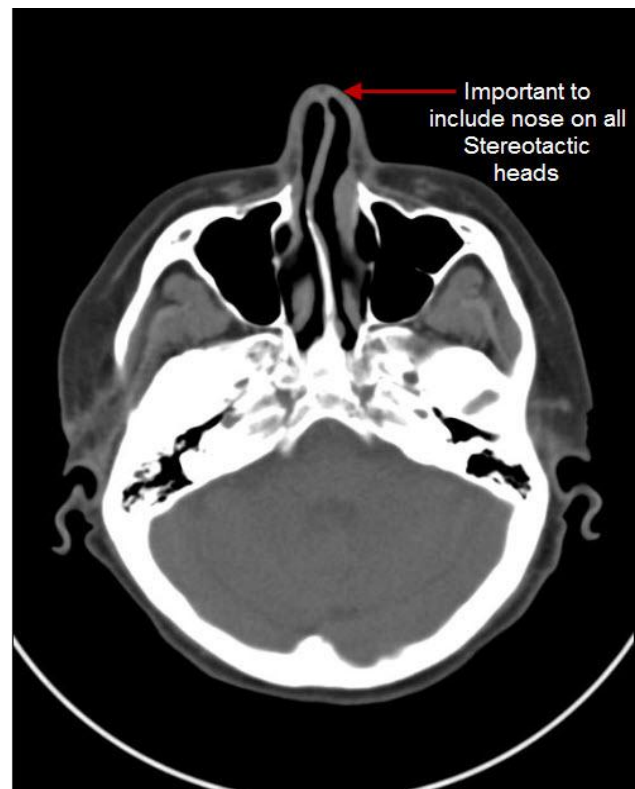
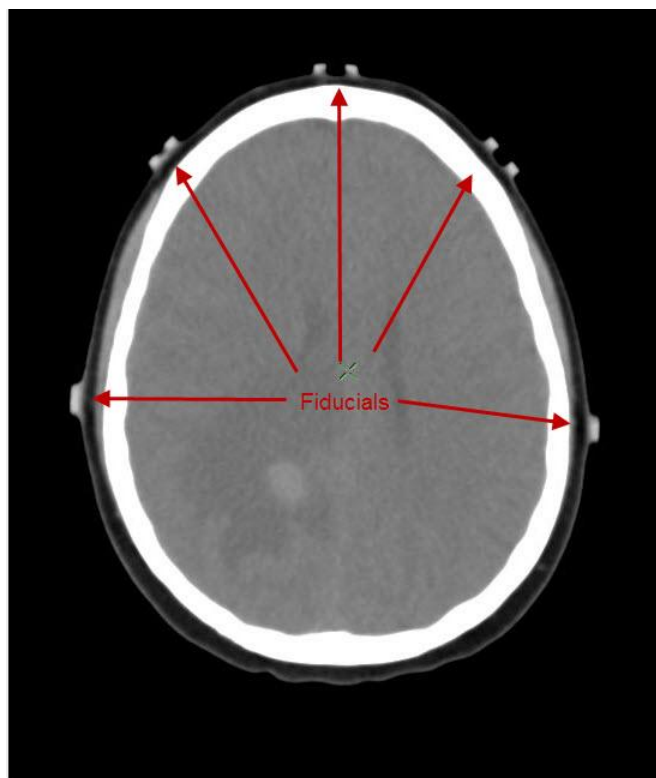
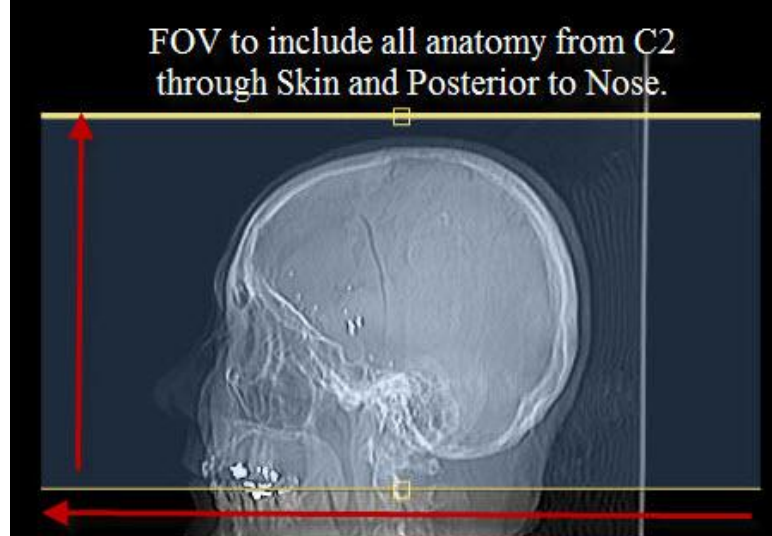


Exam:

STEREOTACTIC BRAIN



- 1. Scout: Lat (**Length 350**)
  - Breath Hold: None
  - 2. Helical: 1 x 1mm
  - 3. FOV: 250 (**must include all anatomy, not to clip the NOSE!**)
  - 4. Scan Length: C-1 through Skin
- \* Caution placing pt in head holder if there are Fiducials!**



- Exam needs to be ordered as a CBR- and a CBR+(if contrast is needed).
- Contact Greg Anderson(#1-2194) if you have any questions
- Complete in QDOC.
- Send Helical Head to Pacs.

