



OREGON  
**HEALTH**  
AUTHORITY

April 2026

# Why Public Health Partners and Communities Should Care About SHIP and CHIPs



# Speaker

---

**Cintia Vimieiro** (she/her/ela)

State Health Improvement Plan  
(SHIP)Lead

Office of the State Public Health  
Director (OSPHD)

# Agenda

---

PH System Background Information

---

What is a SHIP?

---

What is a CHIP?

---

Why these plans matter

---

Final Take Aways

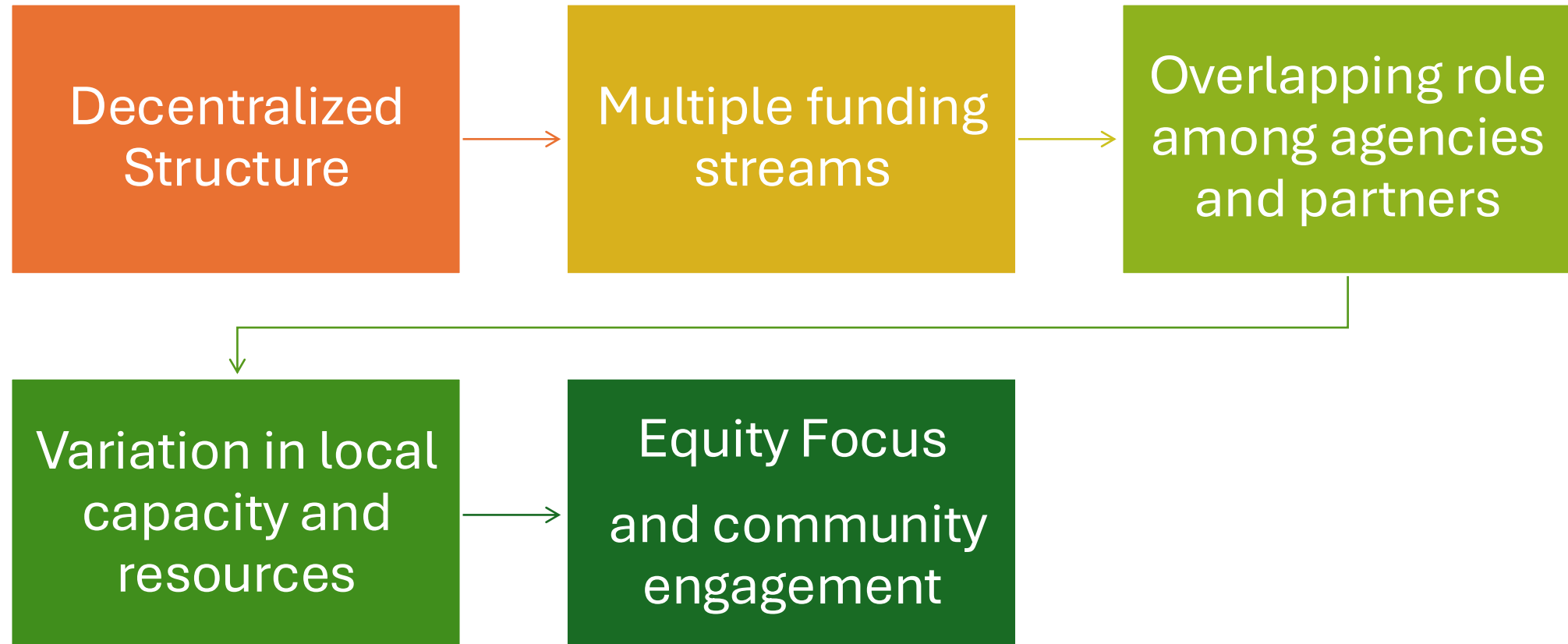
---

Q&A

---

# Public Health System in Oregon

---





What is a SHIP?

# SHIP

Is a public health  
**state** plan

Aligns resources and  
initiatives across  
programs, agencies,  
and statewide plans

Consider the  
perspectives of the  
community  
**statewide**

Why does the  
Public Health  
Division have a  
SHIP?

The Oregon PH Division is accredited  
by a national organization

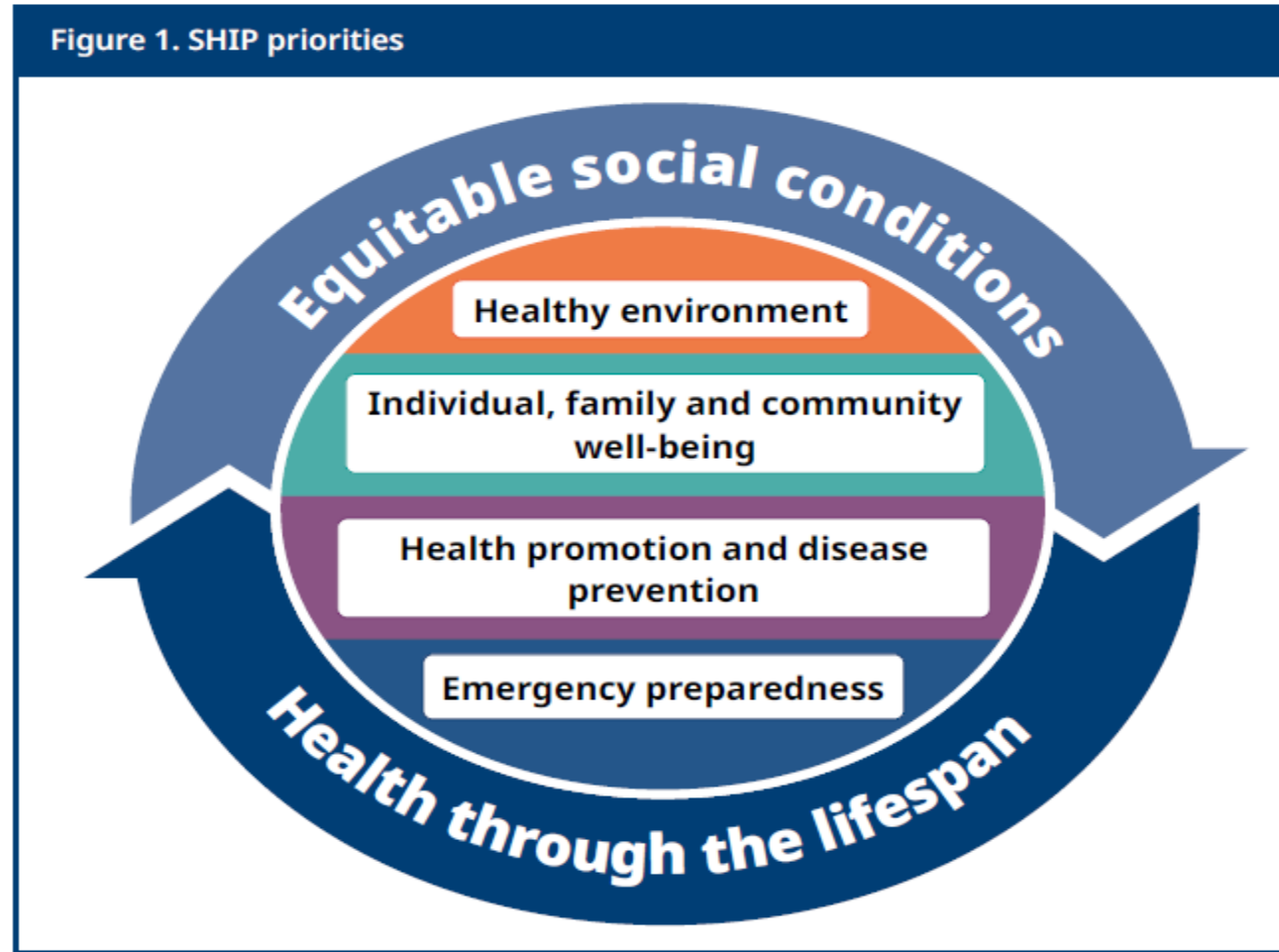
```
graph TD; A[The Oregon PH Division is accredited by a national organization] --> B[State Health Assessment (SHA)]; B --> C[State Health Improvement Plan (SHIP)];
```

State Health Assessment (SHA)

State Health Improvement Plan  
(SHIP)

# Introducing the SHIP 2025-2029 Priorities

---



# SHIP Objectives and Strategies



# Healthy Environment

- **Objective:** Respond to elevated blood lead levels
- **Strategy :** Coordinate trainings or meetings for LPHAs case managers to increase case investigation capacity for children with elevated blood lead levels.
- Lead PHD Section: **Environmental Public Health**
- Data source: Lead Poisoning Prevention Program

# Individual, family and community well-being

- **Objective:** Reduce unintentional overdose deaths
- **Strategy:** Reduce Overdoses through collaborative, culturally appropriate, data driven preventions initiatives that address stigma, support resilience and promote equity.
- Lead PHD Section: **Injury and Violence Prevention**

Data source: Statewide Unintentional Drug Overdose Reporting System (SUDORS)

# Health promotion and disease prevention

- **Objective:** Increase childhood immunizations
- **Strategy:** Make vaccines easier to get and increase public health confidence in vaccines
- Lead PHD Section: **Immunization**

Data source: ALERT IIS

# Emergency preparedness

- **Objective:** Reduce heat-related illness emergency department and urgent care visits
- **Strategy:** Reduce community health impacts from wildfire smoke and heat by funding partners to implement healthy home interventions, such as weatherization and air filtration, using culturally and socially specific community engagement practices.
- Lead PHD Section: **Environmental Public Health**

Data source: [Oregon ESSENCE](#)



**Q&A**

What is a CHIP?



# CHIP

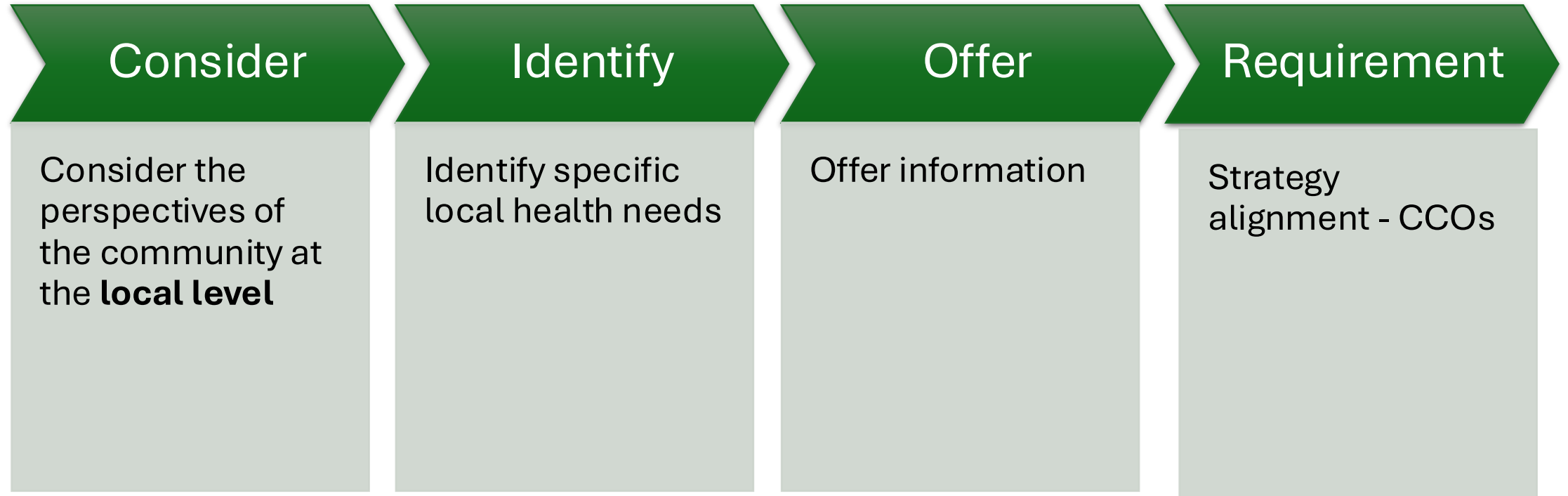
Is a **local** plan

The information included in the CHIP is identified through community health assessment (CHA)

Consider the perspectives of the community at the **local level**

# Why local CHIPs are created

---





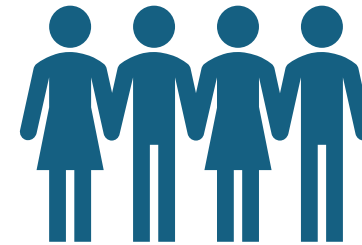
# Why these plans matter

# Why these plans matter

---



Benefits to Public Health  
Partners



Benefits to communities

SHIP

Informed by the  
State Health  
Assessment (SHA)

CHIPs

Built on Community  
Health  
Assessments  
(CHAs)

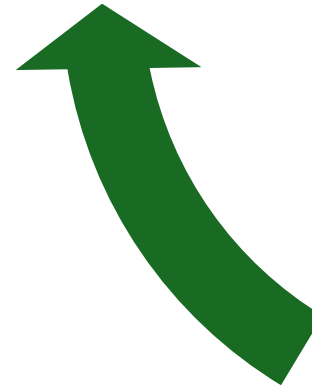
**Rich in data  
resources**

# Accountability

Alignment with  
other plans



Transparency  
and reporting –  
both on  
process and  
data driven  
measures



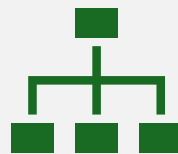
Multi-partner  
engagement



# Key Alignment Opportunities



Mutual support of strategies that address upstream determinants of health



A stronger foundation for resource distribution, system changes and policy alignment

# Call to Action



## **To Public Health Partners**

- Engage in share planning
- Use SHIP/CHIPs priorities to guide your work
- Strengthen cross-sector collaboration
- Hold systems accountable

## **To Communities**

- Ask to participate in assessments and planning for your local CHIP
- Hold systems accountable

# Final Take Aways

---

SHIP and local CHIPs are data resources for advancing health

---

Align plans, when possible, to avoid duplication of work

---

Increase community participation


---

Collaboration among various partners ensures strategies are relevant for urban, rural and frontier communities

# Resources



**SHIP**



Where do your local priorities  
align with the SHIP?

What barriers need addressing?

How can partners better support  
each other?



OREGON  
**HEALTH**  
AUTHORITY

# Q&A

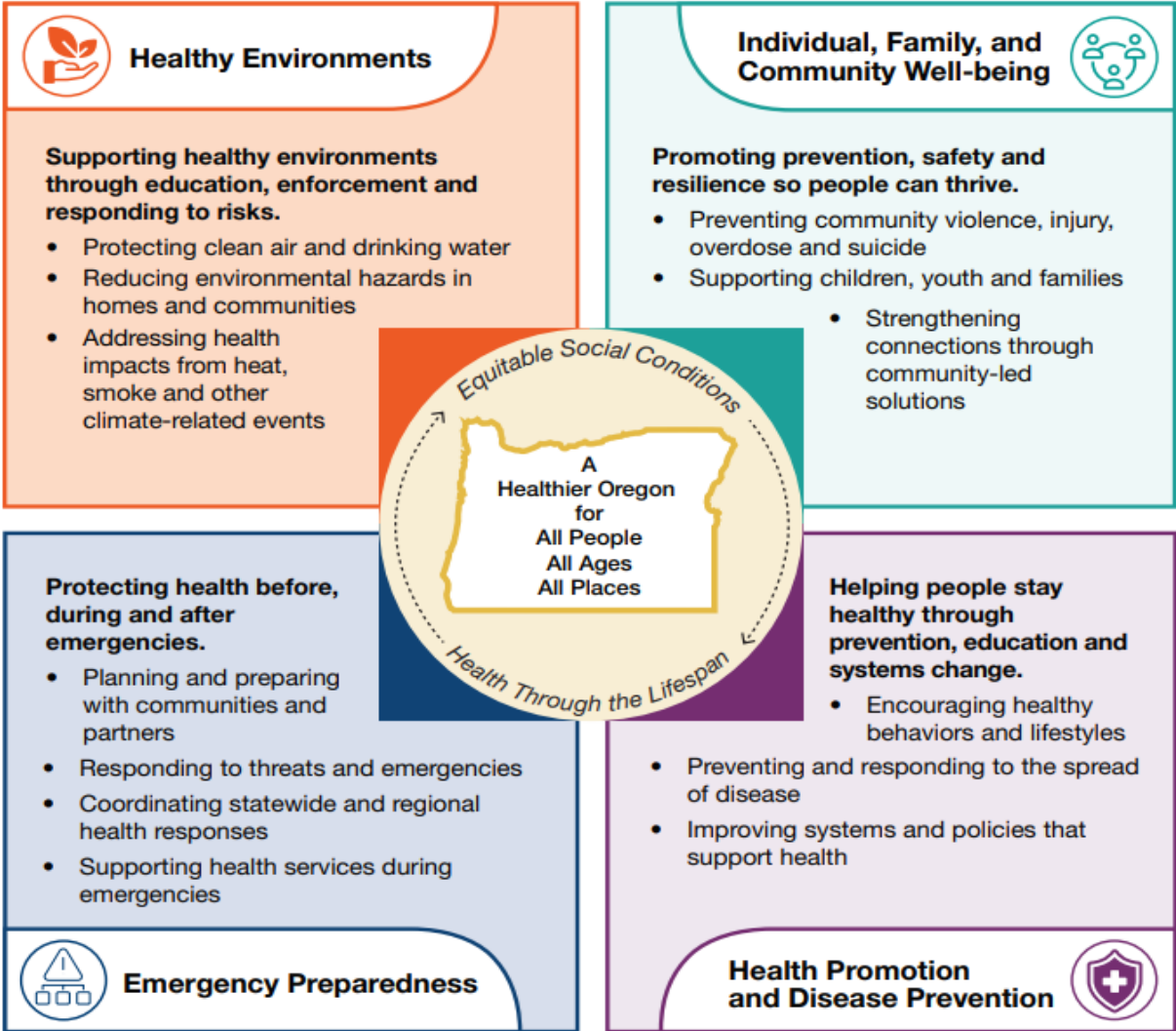
# Thank you!

Feel free to contact  
[cintia.vimieiro@oha.oregon.gov](mailto:cintia.vimieiro@oha.oregon.gov)



*ML Pt*

# Extra slides - The SHIP Priorities



# Acronym Check

---

**CBO**- Community Based Organization

---

**CHA**- Community Health Assessment

---

**CHIP** - Community Health Improvement  
Plan

---

**LPHA**- Local Public Health Authority

---

**OHA**- Oregon Health Authority

---

**PHD**- Public Health Division

---

**SHA**- State Health Assessment

---


**SHIP**- State Health Improvement Plan

# SHIP Strategies – PHD Sections

---

- Acute and Communicable Disease Prevention
- HIV, STD, and TB Section
- Center for Health Statistics
- Oregon Immunization Program
- Family and Child Health
- Health Promotion & Chronic Disease Prevention
- Public Health Lab
- Drinking Water Services
- Oregon Psilocybin Services
- Adolescent, Screenwise, and Reproductive Health
- Injury and Violence Prevention Program
- Environmental Public Health
- Health Security, Preparedness and Response (HSPR)
- WIC
- OSPHD, Policy & Partnerships
- Partnerships for Community Health Program

# Individual, family and community well-being



- Strategy # 2. Suicide Prevention

Strategy : Prevent suicide among people of all ages through equitable and culturally infused prevention approaches for disproportionately affected populations.

- Lead PHD Section: Injury and Violence Prevention

# Healthy Environment



- Strategy # 6. Smokefree air
- Strategy - Protect the health of individuals and communities by strengthening policies that reduce and eliminate exposure to smoke and aerosol from commercial tobacco and cannabis.
- Lead PHD Section: Health Promotion and Chronic Disease Prevention