

Cultivating Compassion:

THE PEACEFUL PRESENCE PROJECT

Oregon Network for Community-Based
Serious Illness Support





We reimagine and transform the way communities talk about, plan for and experience the last stage of life.

Vision: A culture in which every community member receives compassionate, equitable support through the end of life.

Compassionate Communities Model of Care

A Compassionate Community recognizes that caring for one another during times of crisis and loss is not simply a task for health and social services but is everyone's responsibility.

- Practices and conversations around death, dying, and end of life care are transformed & normalized
- Holistic and collaborative action between community and systems is prioritized
- Communities are able to provide skilled and informed practical and emotional support
- Impact: More resilient networks and higher quality end-of-life care experiences





95/5% RULE

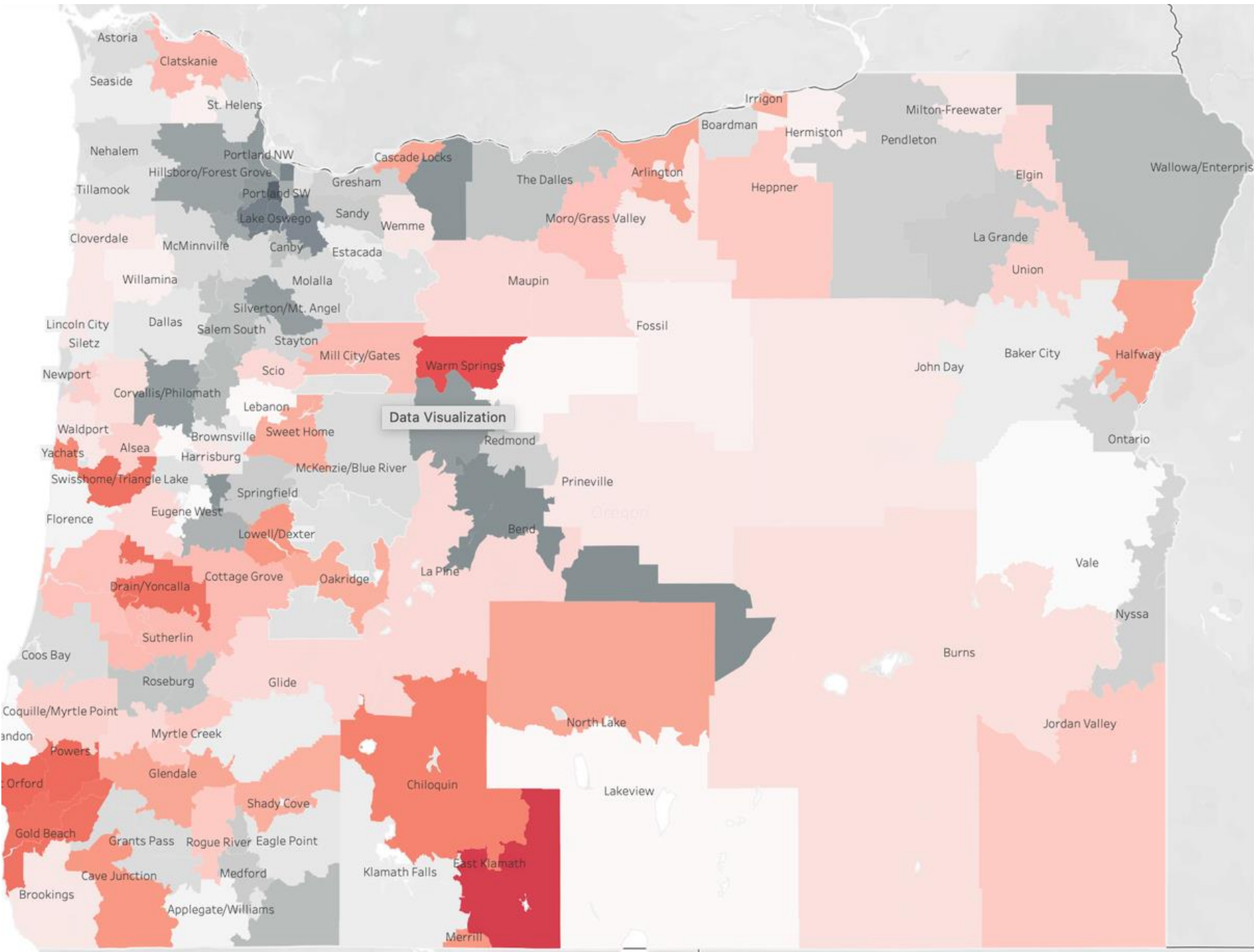
Only 5% of a dying person's time is spent face to face with a medical professional

-What are we as a community doing with the other 95% of the time?

-What quality of support are people receiving, and from whom?

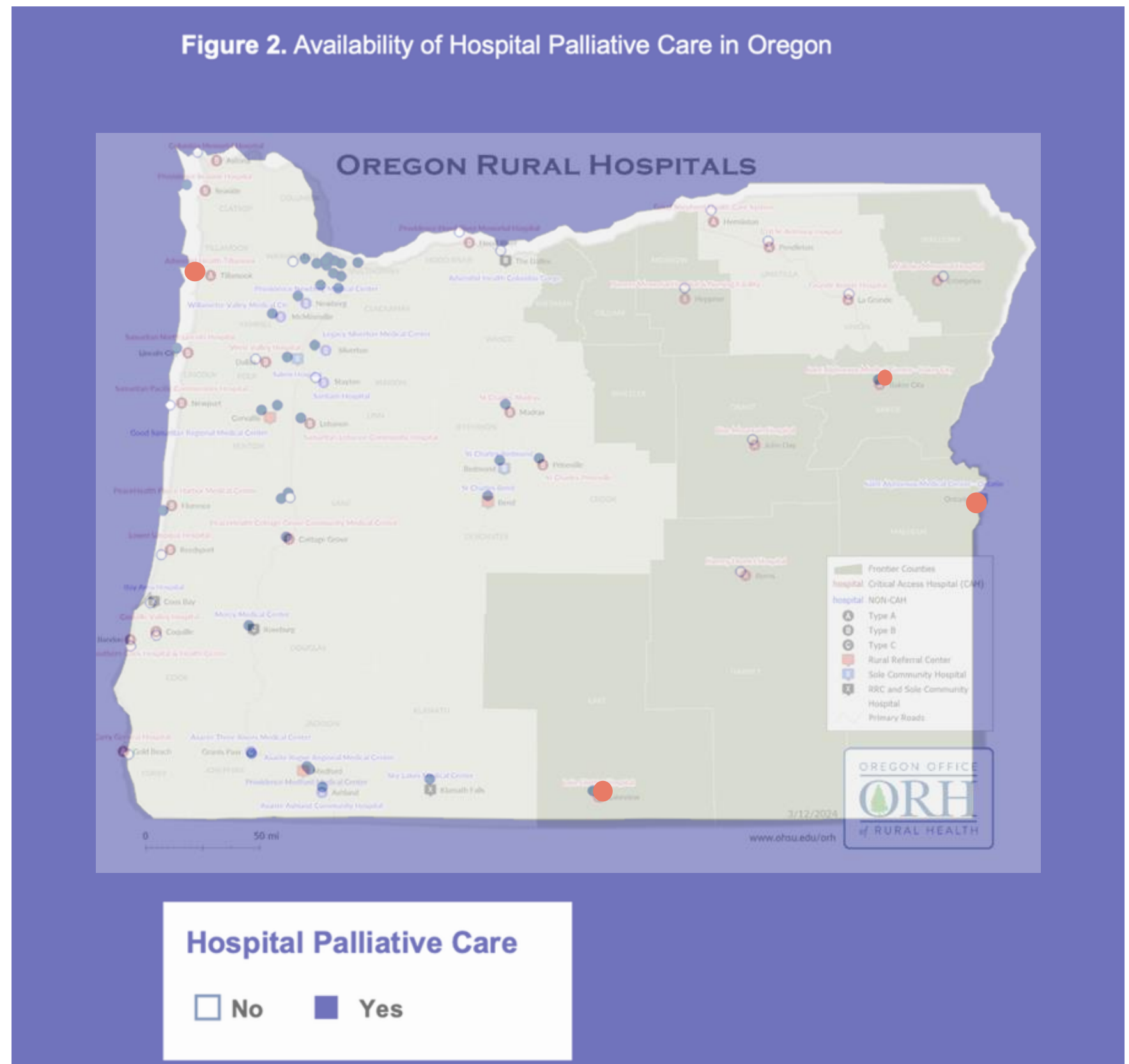
-Is it sufficient?





Areas of Unmet Need: Red is the highest need

Source: Oregon Office of Rural Health, 2025



Hospital Palliative Care

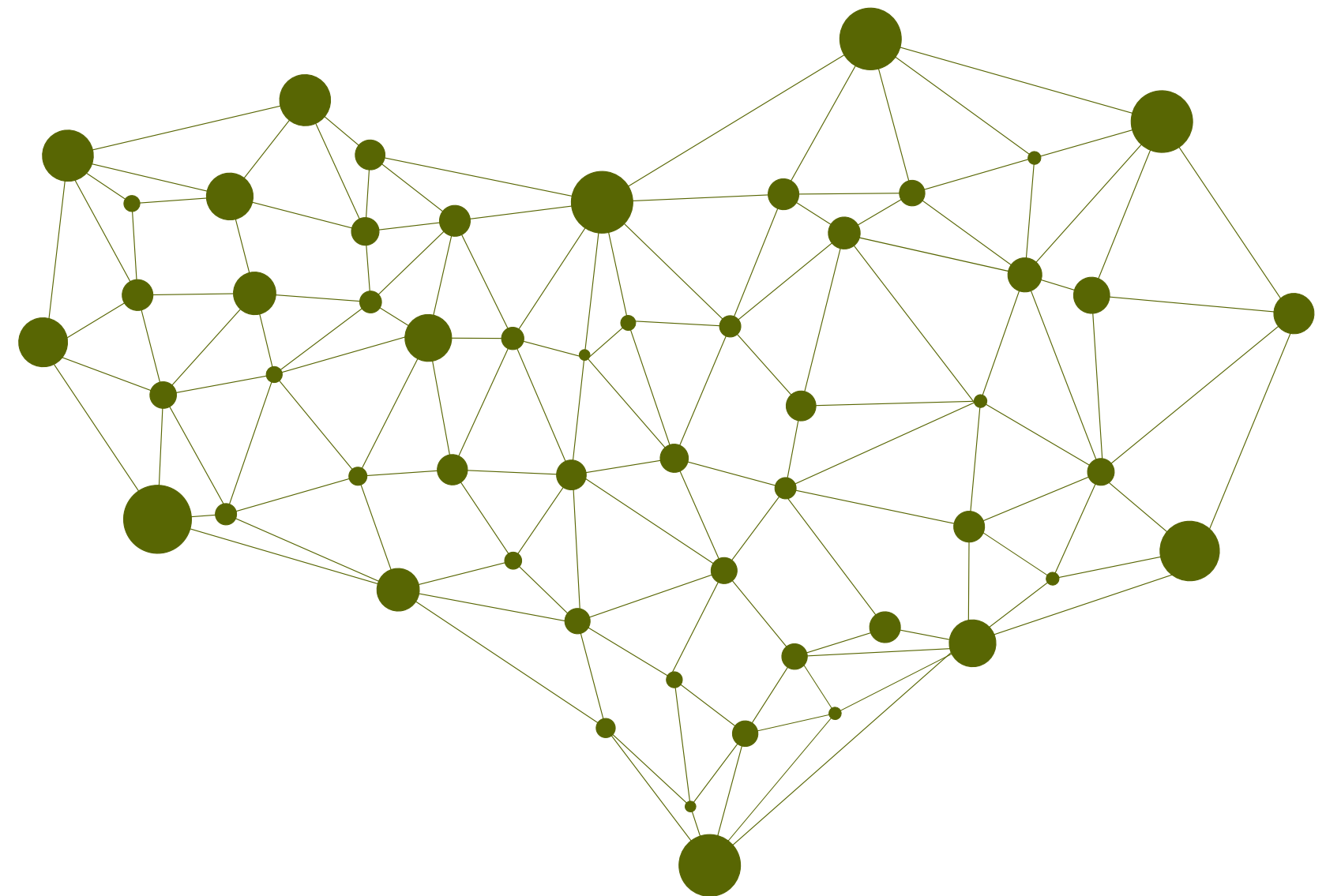
□ No ■ Yes

Statewide Network for Serious Illness Care

- Peer to peer networks established in each county
- Ongoing mentorship and support to encourage best practices
- Referrals and online directory for EOL care practitioners

Education and training opportunities for:

- Community Health Workers
- Community Connector volunteers
- Professional end-of-life doulas



Oregon Network

✦ FOR COMMUNITY-BASED SERIOUS ILLNESS SUPPORT ✦



The ability to identify and strengthen cohesive networks of care increases community resilience and encourages higher quality, more equitable end-of-life experiences for all

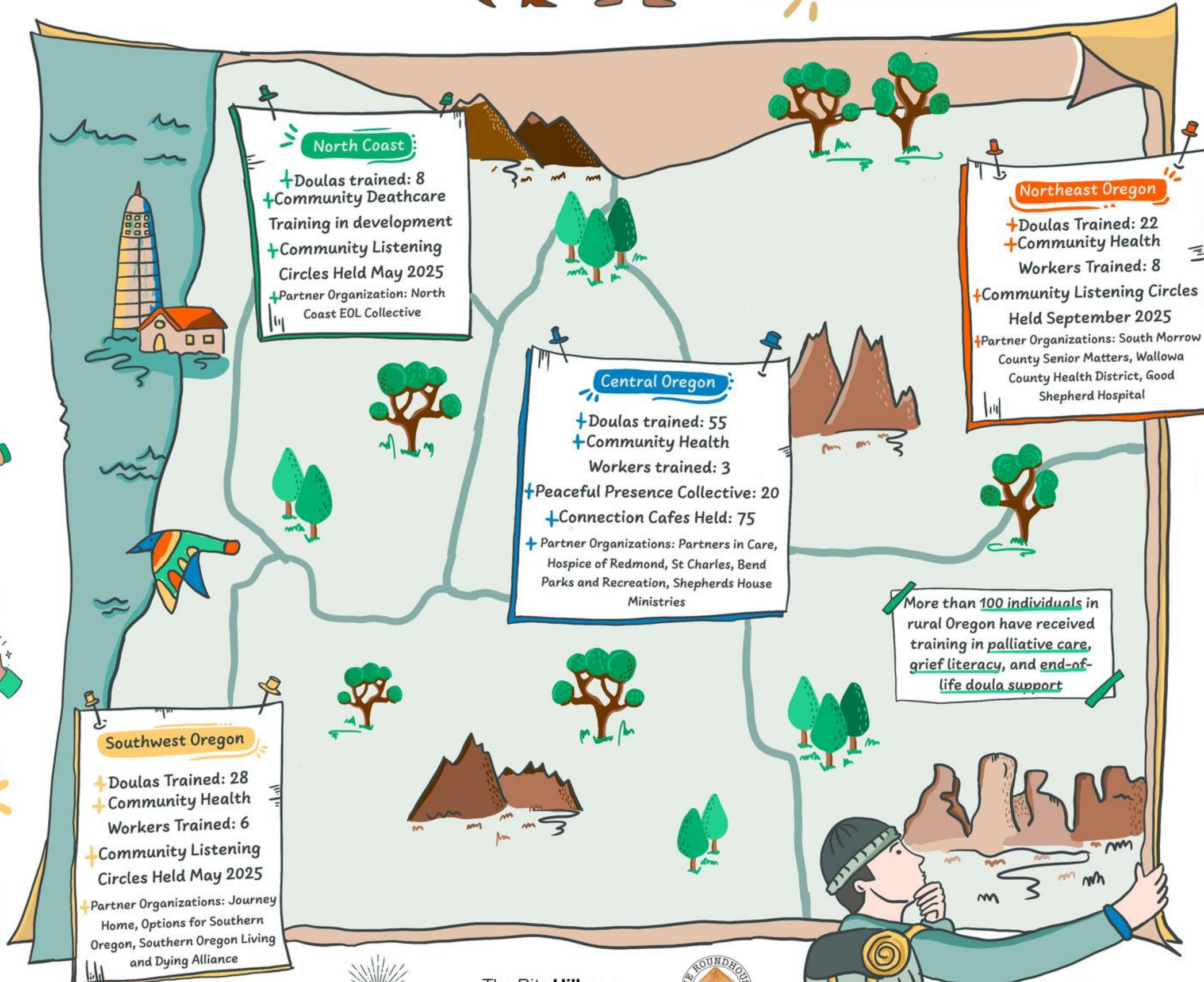
PROJECT GOALS

Widen the circle of caring for patients and caregivers

Identify roles of individuals who can embed the end of life care skill set in existing professions or capacities

Expand cohesive presence of informed community members who can support, especially in resource-limited settings

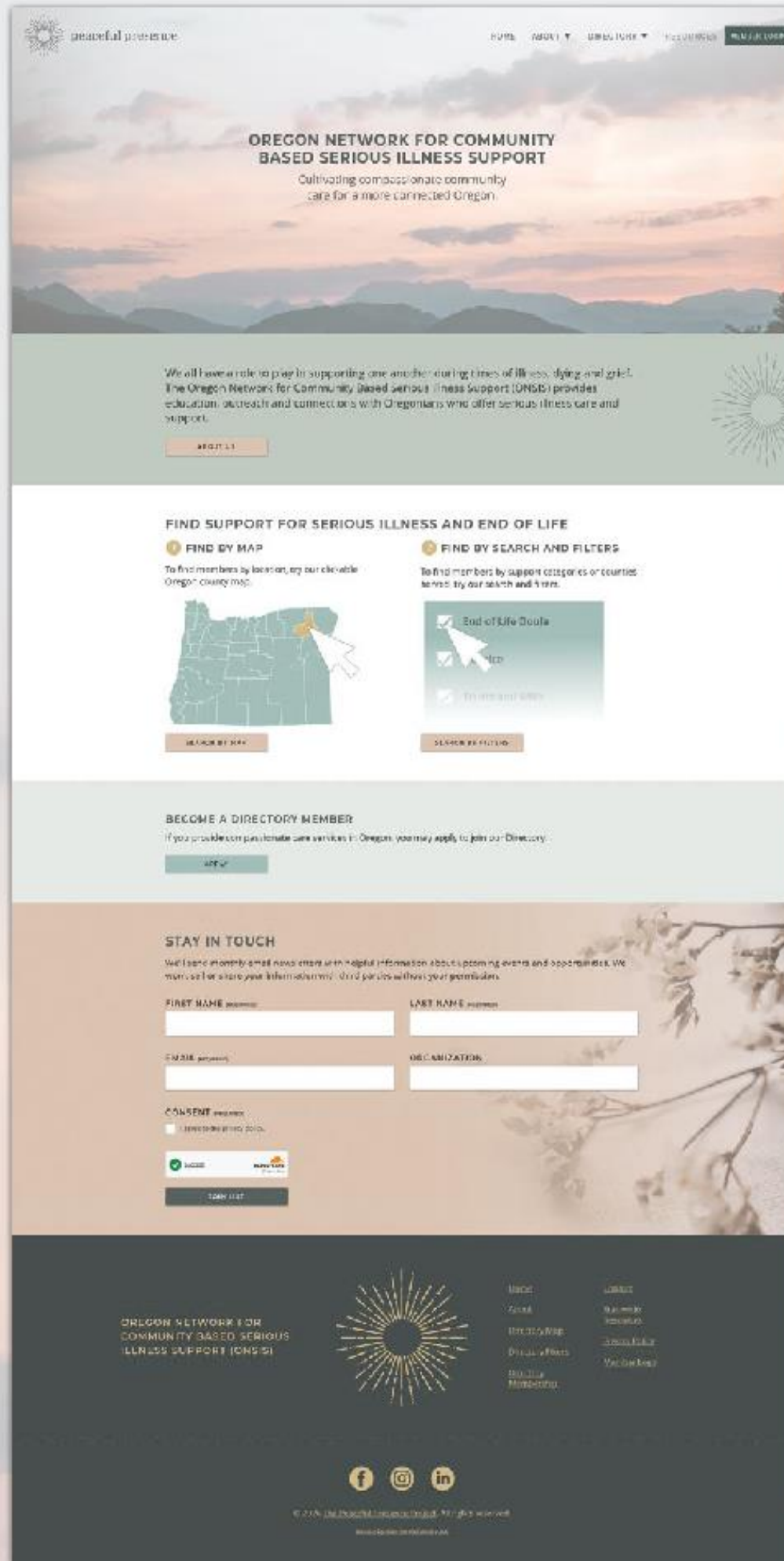
ULTIMATE GOAL
A more death literate Oregon



The Rita Hillman and Alex Foundation



illustration: mina yanci ibis | minadrawing.com



ANNOUNCING NEW ONLINE END-OF-LIFE CARE DIRECTORY:

Oregon Network for Community Based Serious Illness Support

We all have a role to play in supporting one another during times of illness, dying and grief. The Oregon Network for Community Based Serious Illness Support (ONSIS) provides education, outreach and connections with Oregonians who offer serious illness care and support.

If you provide compassionate care services in Oregon, you may apply to join our Directory. If you are seeking a provider, you may search the Directory using a clickable Oregon county map, or by keywords and filters.

<http://onsis.org>

PROJECT GOALS

1

WIDEN

Widen the circle of caring for patients and caregivers

2

IDENTIFY

Identify roles of individuals who can embed the end of life care skill set in existing professions or capacities

3

EXPAND

Expand cohesive presence of informed community members who can support, especially in resource-limited settings

4

ULTIMATE GOAL

A more death literate Oregon

what if our community came together to support one another during times of illness, dying and grief?



peaceful presence

PUBLIC HEALTH PALLIATIVE CARE

Bereavement care as example

6.4% (10%)

High Risk – at risk of complex grief issues. May need referral to mental health professionals

35.2% (30%)

Moderate Risk– in need of some additional support e.g. peer support/ volunteer led group

58.4% (60%)

Low Risk – majority of individuals deal with grief with support of family & friends

Aoun et al. 2015, PLoS One





CONNECTION CAFE

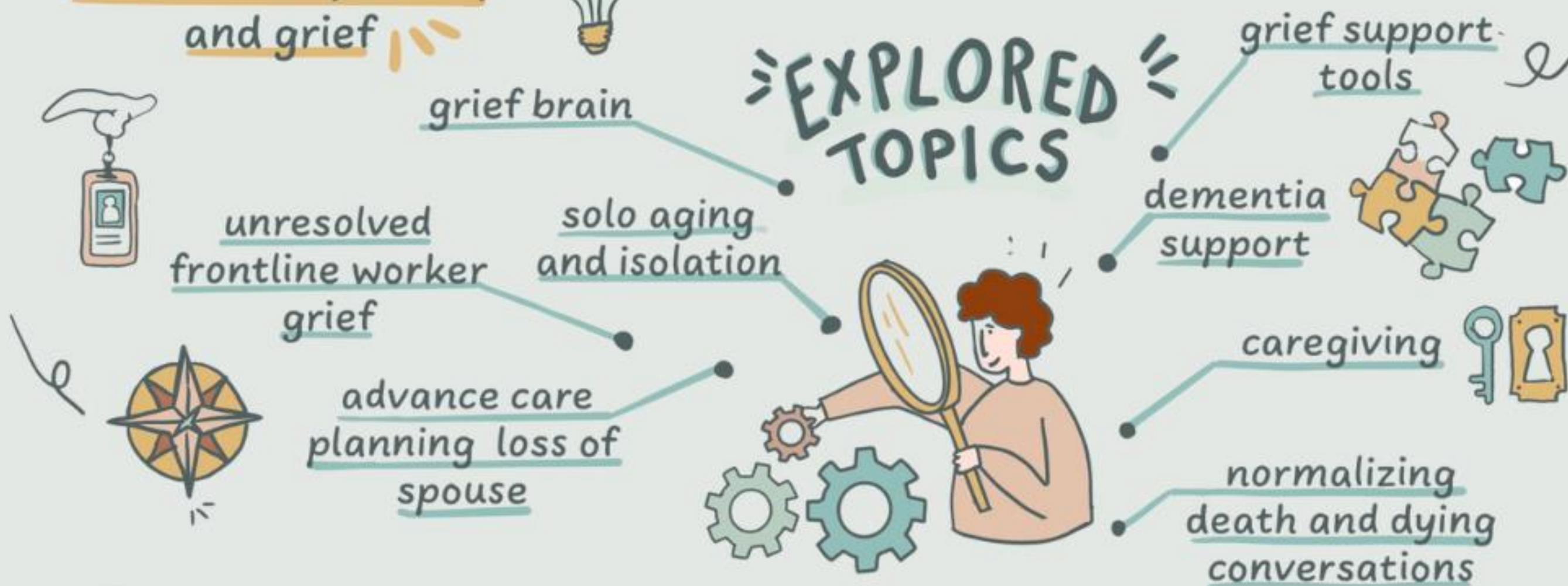
a welcoming and compassionate space for supportive conversations about illness, death, and grief

75 CAFES HELD ACROSS SEVEN SITES

PARTICIPANTS AGE: 32 TO 89 YEARS OLD



EXPLORED TOPICS



"I don't want to rely on one person to discuss my grief with - I attend to be in community with others 'who get it.'" -KJ

"I thought I had my end of life planning figured out. I learned I had barely scratched the surface!" -TJ

"The learning between the griever and non-grievors that took place was really powerful." -KP

IMPACT



"I appreciated the opportunity to be with others, even when we were falling apart." -CD

"My father's overall mood improved after attending the cafes and making connections - it gave him something to look forward to." -MT



peaceful presence

illustration: mina yanci ibis | minadrawing.com

What this project is and isn't:

What the cafe *is*:

- Supportive space for dialogue
- Community-based approach that fosters meaningful relationships
 - Skill-building opportunity for community members
 - Intervention to reduce Isolation

What the cafe is *not*:

- Substitute for professional medical or mental health care
 - Formal hospice or palliative care services
 - Grief counseling service
 - Expert-driven care

Community Connector Toolkit

COMMUNITY CONNECTOR TOOLKIT



peaceful presence
END OF LIFE DOULAS

COMMUNITY CONNECTOR PROGRAM

*Addressing social isolation and
loneliness related to serious illness*

OVERVIEW

The Community Connector Program for Serious Illness Care helps to decrease social isolation and loneliness among Central Oregon residents living with or supporting someone with chronic or serious illness.



Upcoming Virtual Learning Opportunities

May 21

Voice, Presence and Choice:
A Community-Based Approach to Advocacy

May 26

Connection Cafe Facilitator Training

June 2

Grief Literacy

August 3,4

ELNEC End-of-Life Care Virtual Training for Nurses



peaceful presence
END OF LIFE DOULAS

Get in touch with us

- ***<http://thepeacefulpresenceproject.org>***
- ***info@thepeacefulpresenceproject.org***
- ***541-293-8636***