

Vaccine promotion in Longterm care

Sumathi Devarajan

Disclosures

None

Thank the following:

Friendship Health Center

Michele Shields our Infection Preventionist nurse
and staff development specialist

Objectives



Unique challenges in LTC for vaccinations



Unique opportunities in LTC



Motivational interviewing techniques

Guidelines 2025-26

American Health Care Association(AHCA) and

NCAL (National Center for Assisted Living) have a publication

[getvaccinated.us](https://www.getvaccinated.us)

Best Practices checklist for LTC providers



Vaccine recommendations - CMS 2025-26 (Develop facility policy and procedures)

► Influenza

Provide education(benefits and risks) to resident/representative prior to vaccination

Each resident is offered the vaccine between Oct 1-March 31

Resident/representative has an opportunity to refuse the vaccine

Documentation of the above in the EMR

► Pneumonia

Same as above(has no time restriction)

Covid 19

- ▶ Each resident and staff member is offered the vaccine (if available)
- ▶ Each resident/representative and staff member is provided education about the benefits, safety and risks of the vaccine
- ▶ Each resident /representative and staff member has the opportunity to refuse the vaccine
- ▶ For additional covid Vaccines all above steps should be followed
- ▶ Documentation of all above steps in EMR

(Can be an admission's order after risks

RSV adult

- GSK's Arexvy
- Moderna's
mResvia
- Pfizer's Abrysvo
(Aug-Oct)

Recommended for all adults >75 years
of age

Given one time

Adults 50-74 that meet the CDC
increased-risk criteria

Only after contraindication screening
and discussion of risks/benefits with
the resident or their representative.

Preliminary 2024-2025 U.S. RSV Burden Estimates

CDC estimates* that, from October 1, 2024 through May 3, 2025, there have been:

3.6 million -
6.5 million



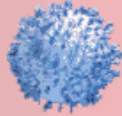
RSV
Outpatient Visits

190,000 -
350,000



RSV
Hospitalizations

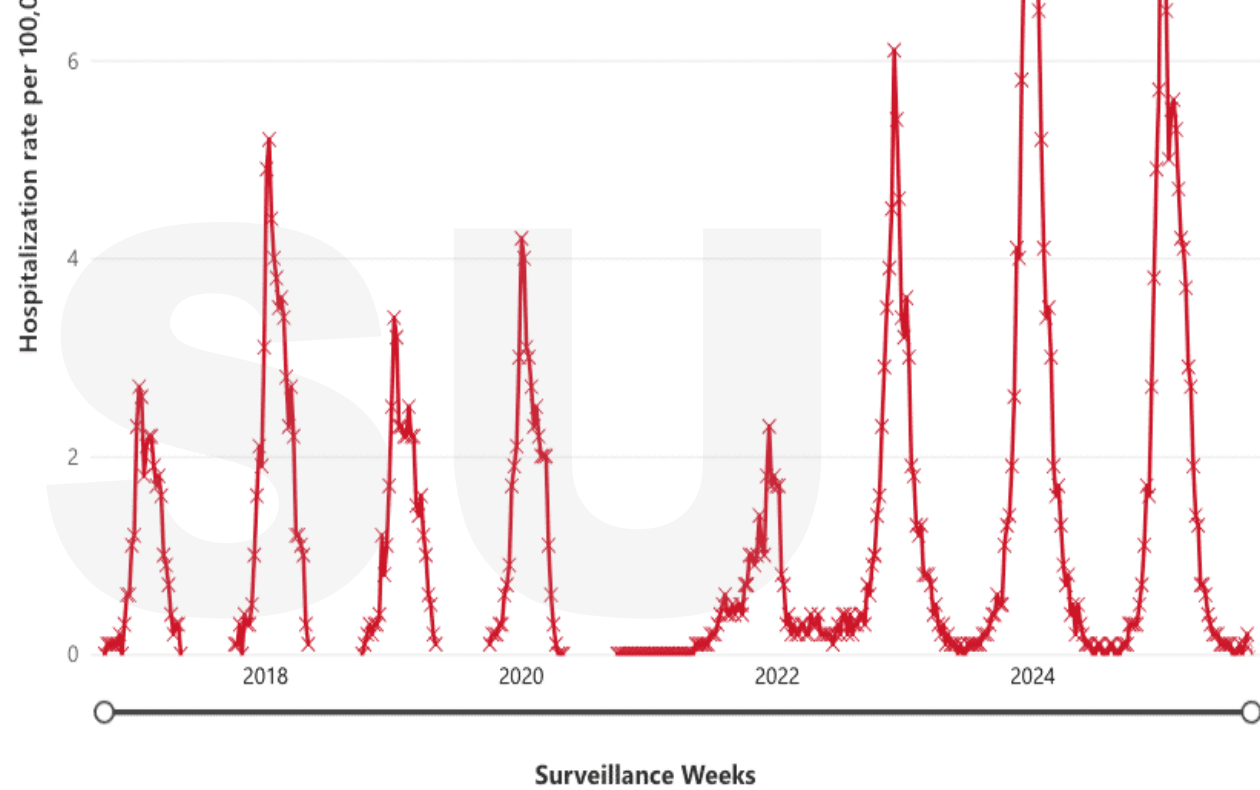
10,000 -
23,000



RSV
Deaths

*Based on data from September 28, 2024 through May 3, 2025

[Download Data](#)



Data last updated: 9/25/2025 5:11:24 PM | Accessibility: Select (Enter) the graph area and press Alt + Shift + F11 to view the data as a table. Press ? to view more keyboard shortcuts.

PALTC RSV module

RSV Disease burden

- ▶ 0.5 -14 % in Long term care Incidence
- ▶ Among > 60 years of age hospitalized 14 % are from Nursing homes
- ▶ RSV outbreaks, which last 2-3 weeks, attack rates in long-term care facilities range from 12% to 38%.
- ▶ RSV vaccines are about 80% effective at preventing RSV hospitalization in older adults.
- ▶ Serious outcomes:

In a recent CDC study, among patients age ≥ 60 years hospitalized with RSV:

17% were admitted to an ICU

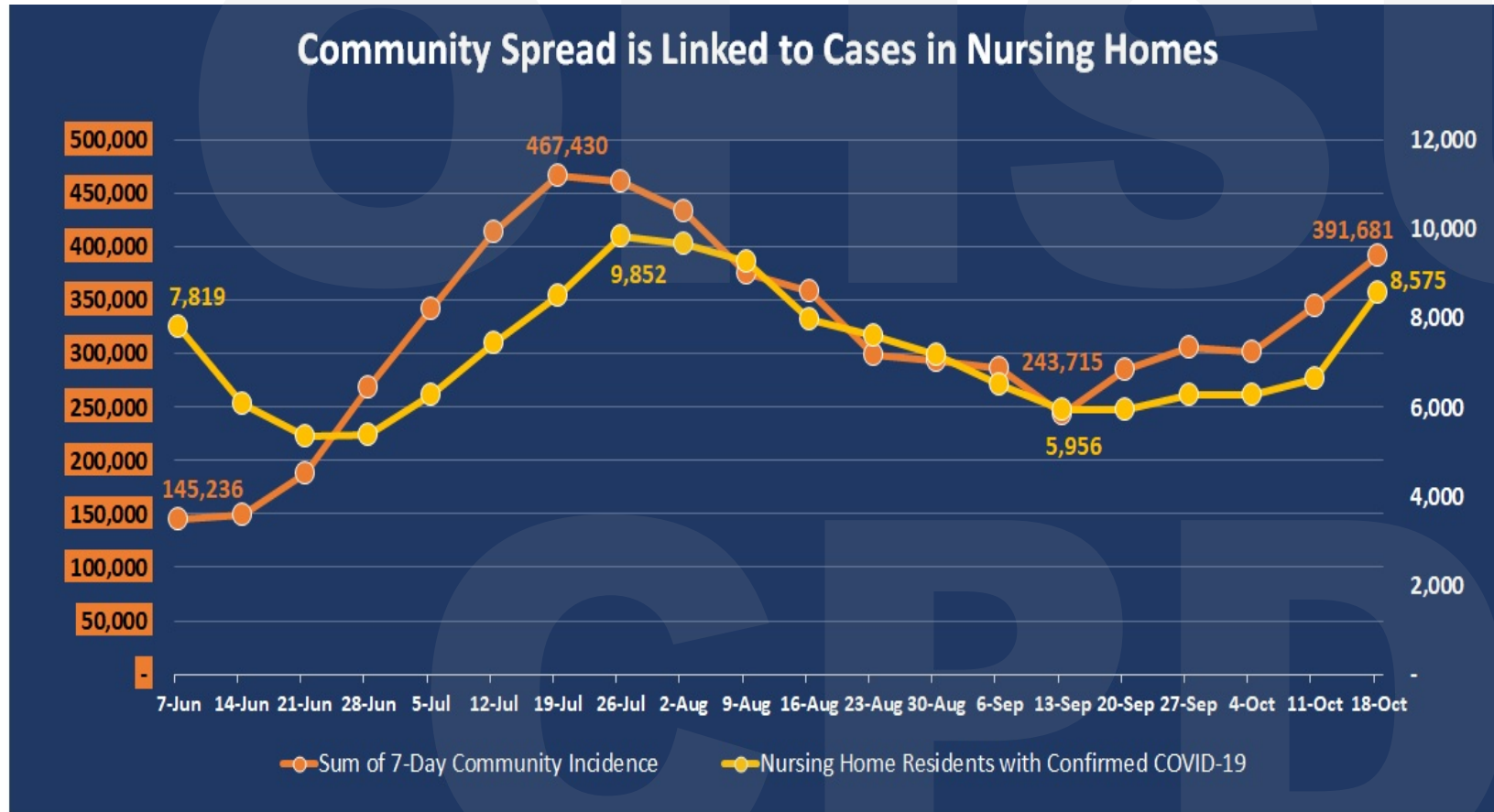
5% required mechanical ventilation

5% died

Increased Risk Criteria

- ▶ Chronic cardiovascular disease (e.g., heart failure, coronary artery disease, or congenital heart disease [excluding isolated hypertension])
- ▶ Chronic lung or respiratory disease (e.g., chronic obstructive pulmonary disease, emphysema, asthma, interstitial lung disease, or cystic fibrosis)
- ▶ End-stage renal disease or dependence on hemodialysis or other renal replacement therapy
- ▶ Diabetes mellitus complicated by chronic kidney disease, neuropathy, retinopathy, or other end-organ damage, or requiring treatment with insulin or sodium-glucose cotransporter-2 (SGLT2) inhibitor
- ▶ Neurologic or neuromuscular conditions causing impaired airway clearance or respiratory muscle weakness (e.g., poststroke dysphagia, amyotrophic lateral sclerosis, or muscular dystrophy [excluding history of stroke without impaired airway clearance])
- ▶ Chronic liver disease (e.g., cirrhosis)
- ▶ Chronic hematologic conditions (e.g., sickle cell disease or thalassemia)
- ▶ Severe obesity (body mass index ≥ 40 kg/m²)
- ▶ Moderate or severe immune compromise†
- ▶ Residence in a nursing home
- ▶ Other chronic medical conditions or risk factors that a healthcare provider determines would increase the risk for severe disease due to viral respiratory infection

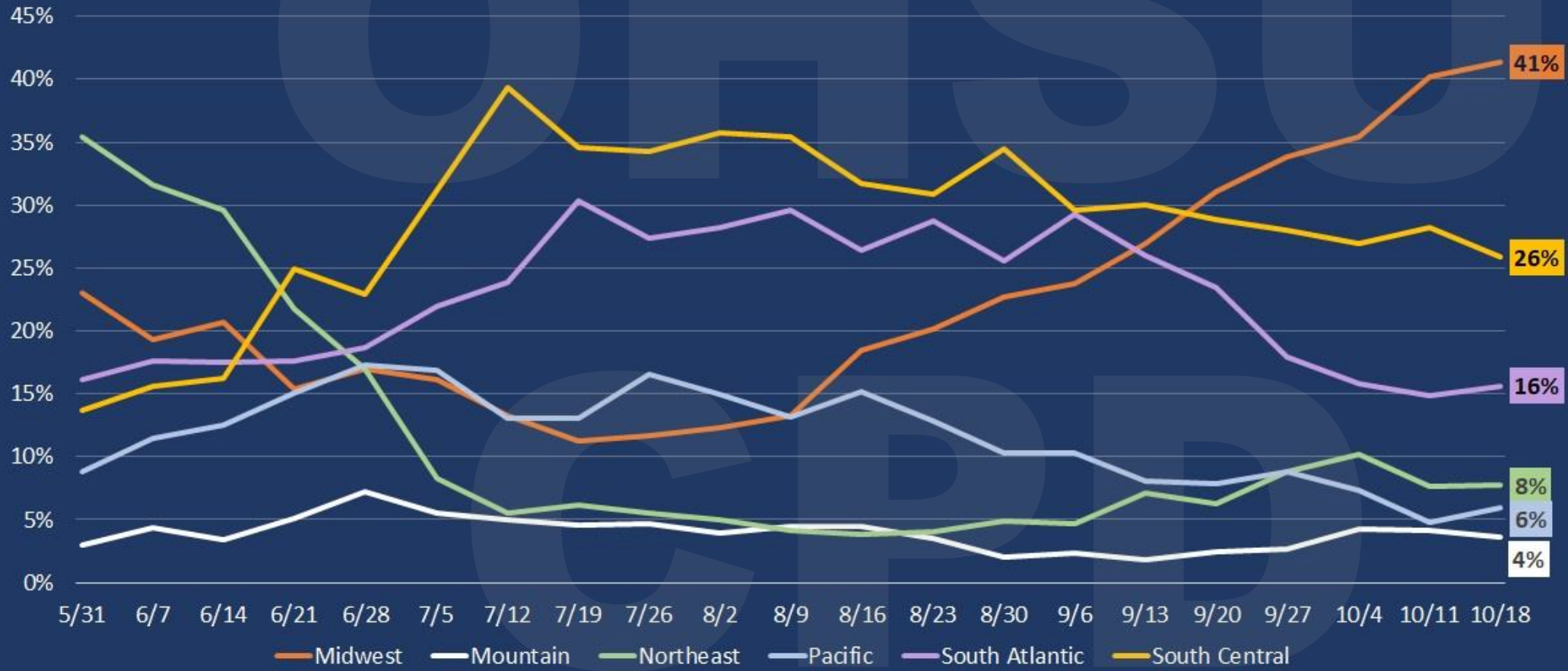
Covid 19 2025



Sources: Centers for Medicare & Medicaid Services (CMS), May 31 – October 18 on Nursing Home COVID Cases and Johns Hopkins on COVID Cases in General Population

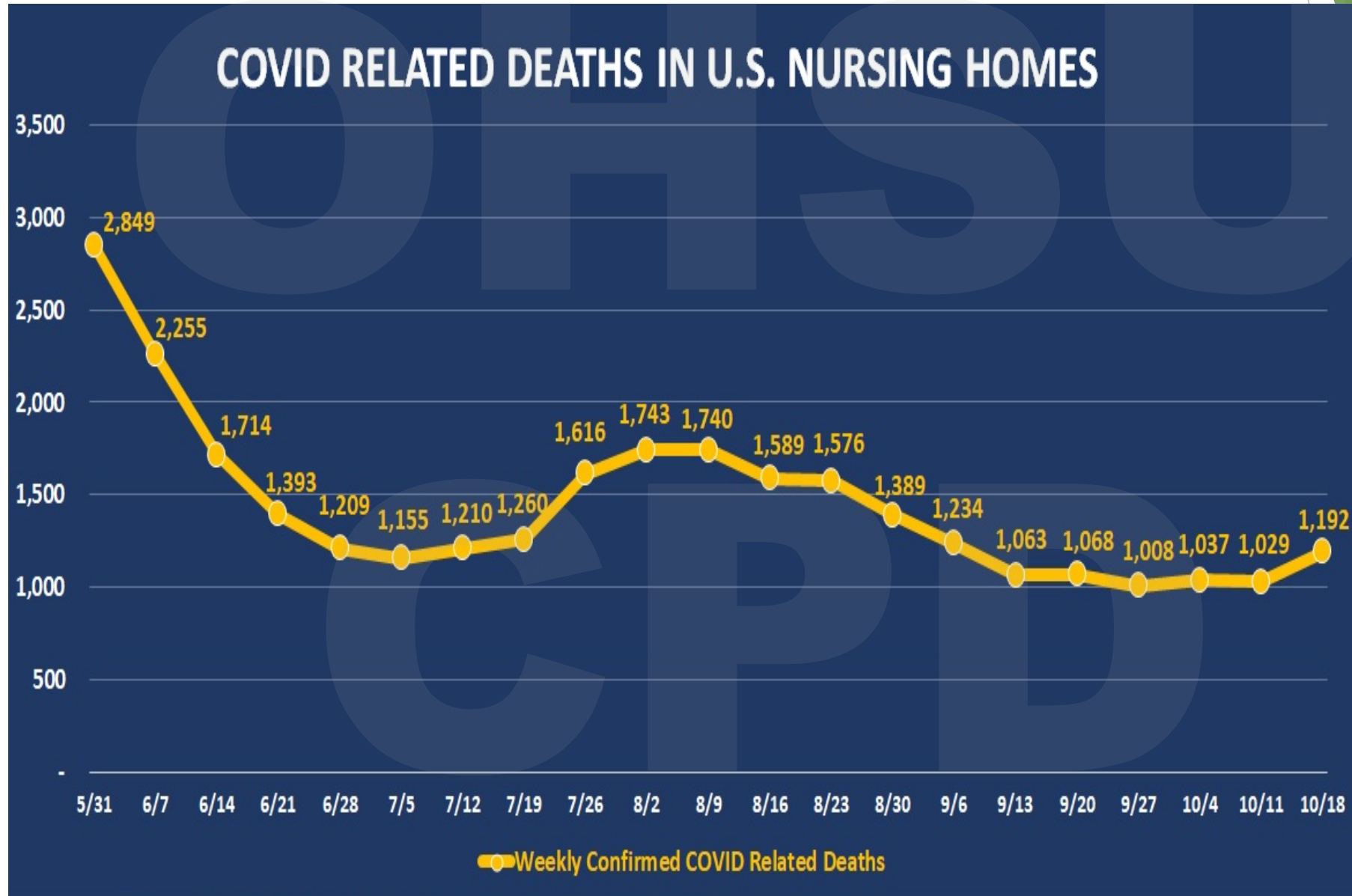
2025

PERCENT OF CONFIRMED COVID CASES IN U.S. NURSING HOMES BY REGION



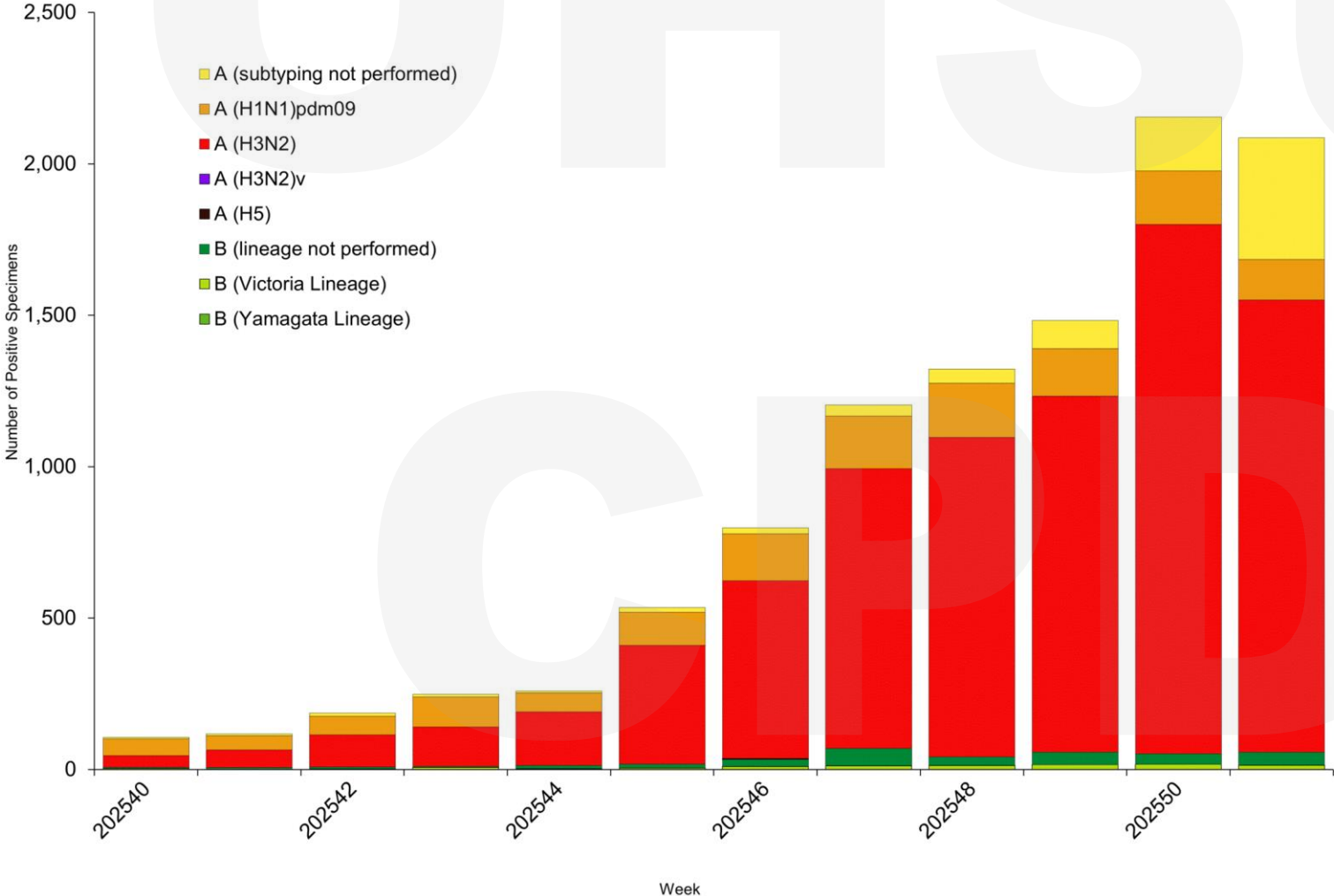
Source: Centers for Medicare & Medicaid Services (CMS), May 31 – October 18, Regions (U.S. Census Bureau definition)

Covid related deaths



Influenza rates

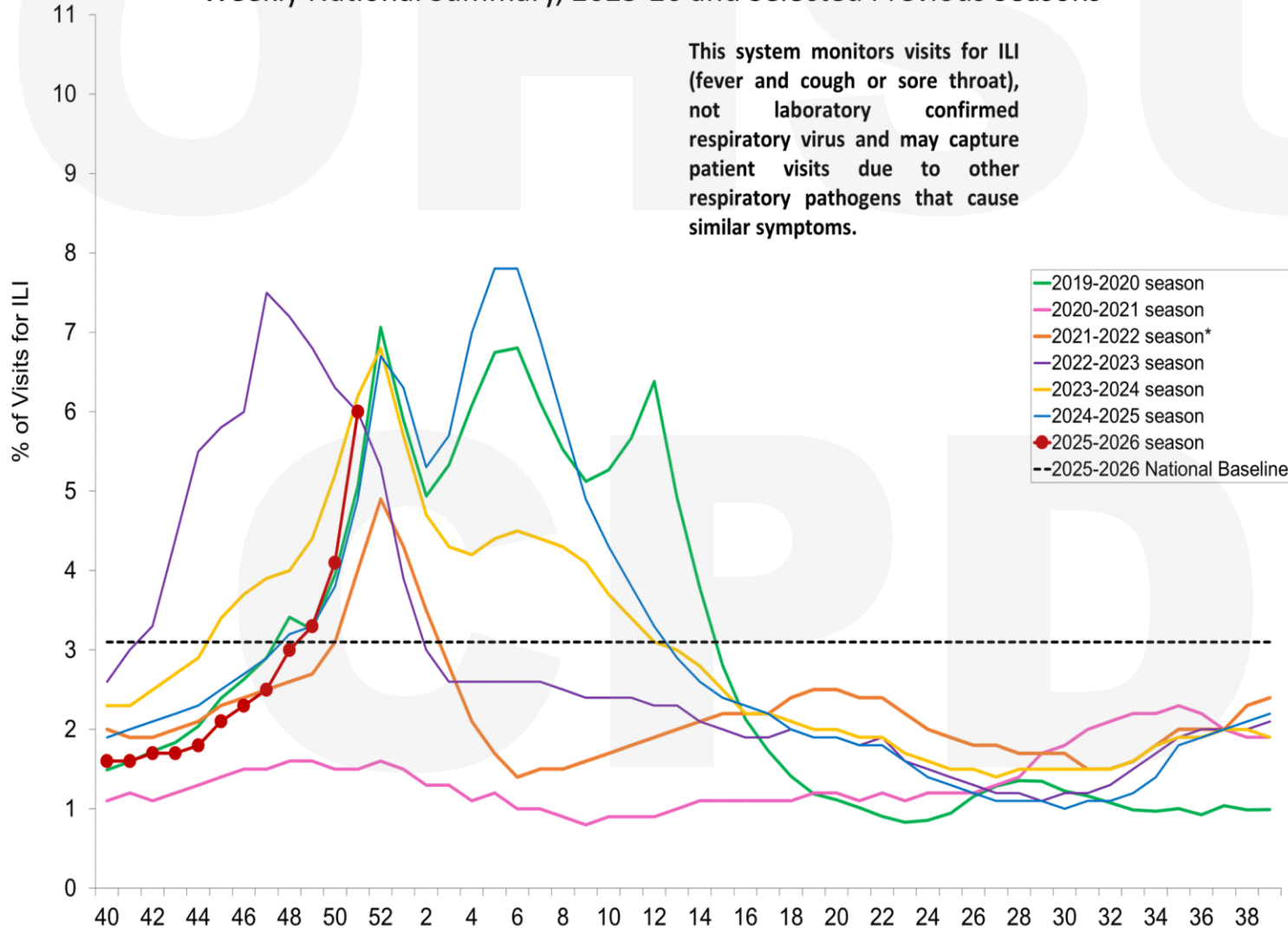
Influenza Positive Tests Reported to CDC by U.S. Public Health Laboratories, National Summary, 2025-2026 Season



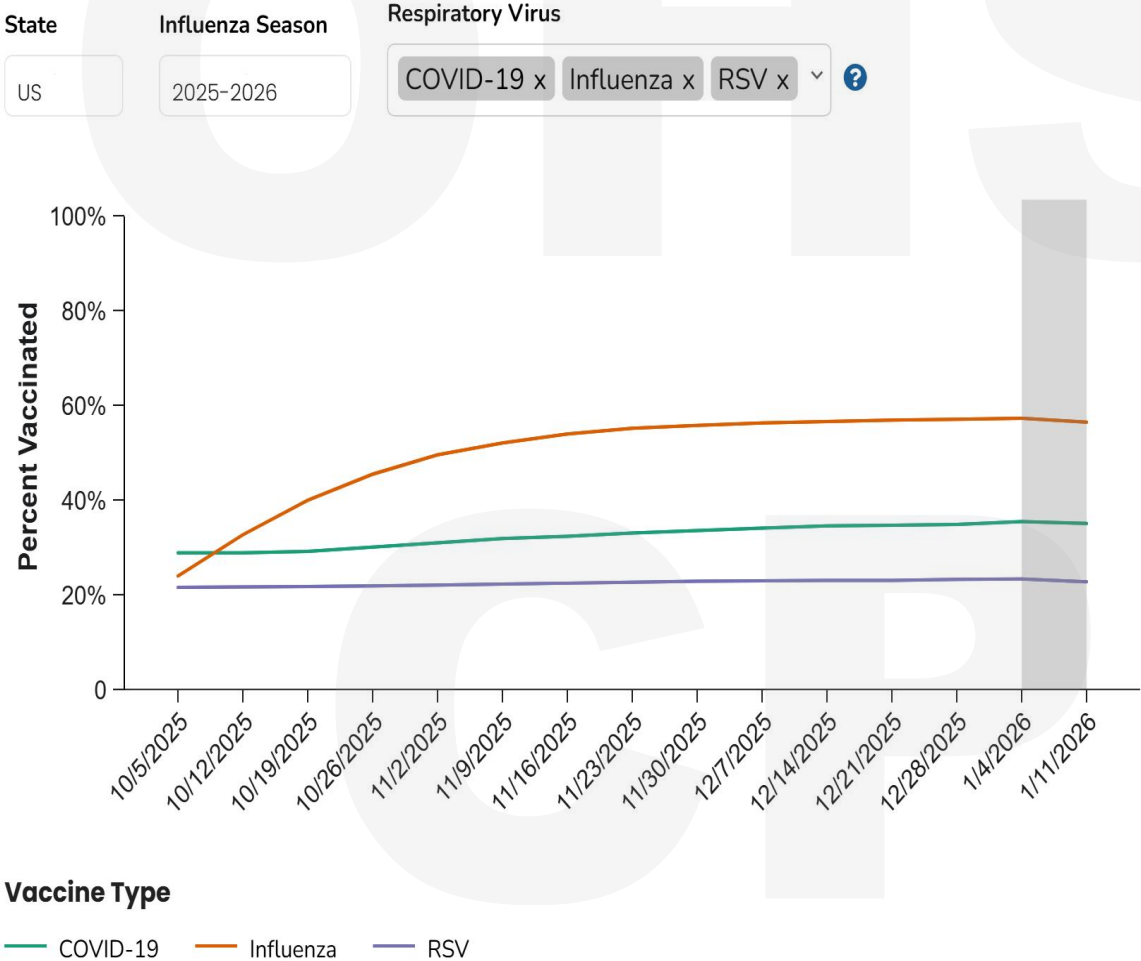
Influenza

Percentage of Outpatient Visits for Respiratory Illness Reported By The U.S. Outpatient Influenza-like Illness Surveillance Network (ILINet), Weekly National Summary, 2025-26 and Selected Previous Seasons

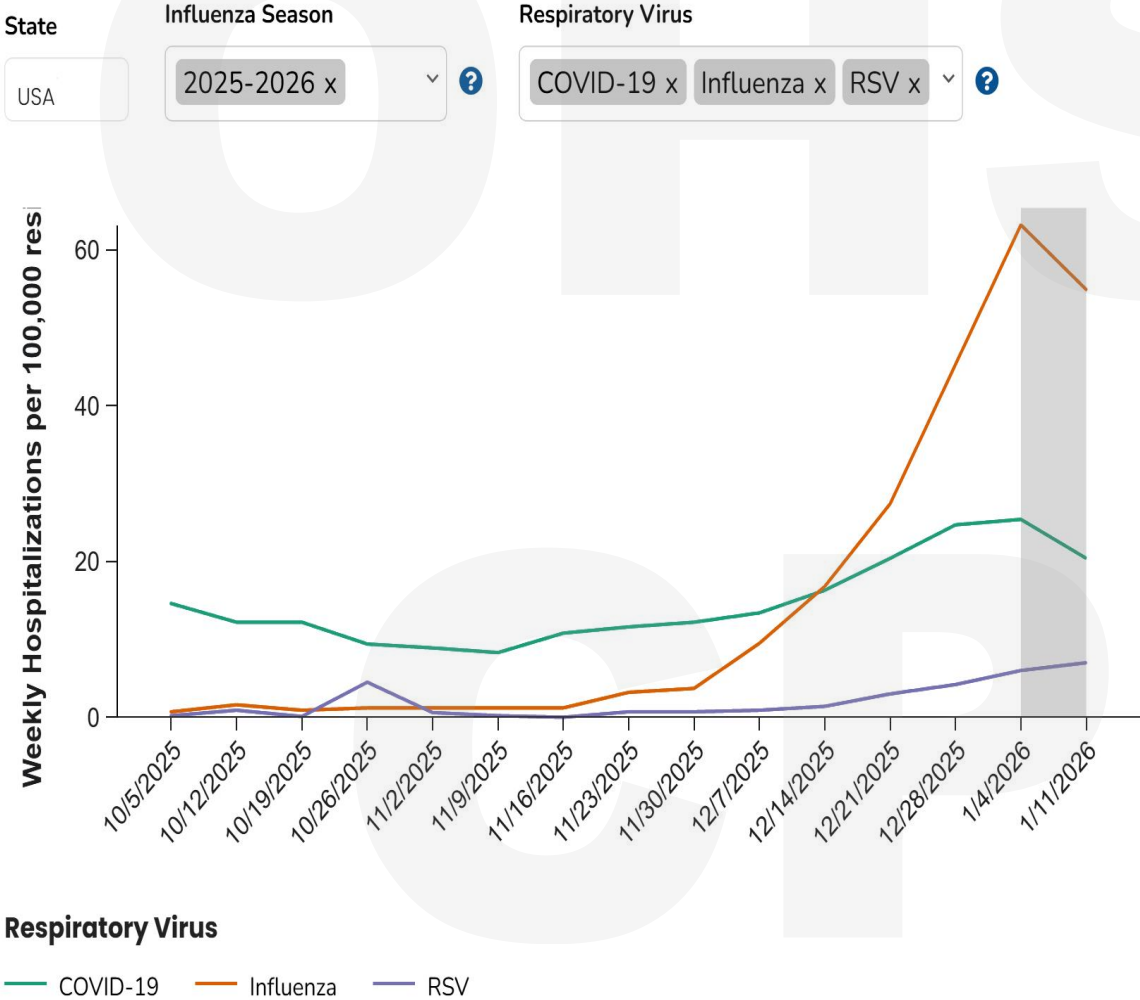
This system monitors visits for ILI (fever and cough or sore throat), not laboratory confirmed respiratory virus and may capture patient visits due to other respiratory pathogens that cause similar symptoms.



Nursing home data on vaccination 2025/26



Hospitalization rates from 100,00 nursing home residents



Pneumonia in Nursing homes



Nursing home-acquired pneumonia occurs in an estimated 1-2 patients for every 1000 days of nursing home residence.



Nursing home residents diagnosed with pneumonia and requiring hospitalization can have mortality ranging from 13 to 41%.



An individual's risk is multifactorial including their functional status, the presence of underlying pulmonary disease, age, and comorbidities such as stroke, musculoskeletal disorders, and immunosuppression.

Actions Summary

- ▶ Offer the vaccine, go over VIS (Vaccine Information Sheet), no need for written consent

Pneumonia

Influenza

RSV

Covid 19

- ▶ Document in EMR (CMS Requirement)

- ▶ Report to CDC's National Health and safety Network

AAFP- recommendation

COVID-19

- All adults 19 years and older should receive a COVID-19 vaccine.

It is especially important to get a COVID-19 vaccine if you are:

- 65 years and older;
- At increased risk for severe COVID-19 infection; and
- Have never received a COVID-19 vaccine.

- All children ages 6-23 months should be vaccinated against COVID-19 and use a risk-based single dose approach for children and teens 2-18 years.
- The AAFP recommends COVID-19 vaccination during pregnancy during any trimester and including during lactation.



RSV

- The AAFP supports CDC guidance recommending a one-time RSV vaccine for adults age 75 and older, and for ages 50-74 at increased risk.
- During September-January, pregnant patients are advised to receive the respiratory syncytial virus vaccine (Abrysvo®) at 32-36 weeks.
- Infants under 8 months without maternal protection should receive nirsevimab or clesrovimab.



Influenza

- Annual flu vaccination is recommended for everyone age 6 months and older without medical contraindications.

Because vaccine recommendations change each year, recipients should be given an age-appropriate vaccine approved for their age group.



CDC guidelines

- ▶ Connect to web

OHSU

CPD

Motivational Interviewing- Concepts

‘Motivational Interviewing(MI) is a collaborative, goal-oriented style of communication with particular attention to the Language of change.

It is designed to strengthen personal motivation for the commitment to a specific goal by eliciting and exploring the person’s own reasons for change within an atmosphere of acceptance and compassion’

Miller and Rollinick, 2013, p.29

MI- Key Qualities

(MI network of Trainer's website)



Guiding style of communication, between good listening and directing



Empowers people to change, helping them see their own rationale, importance and capacity for change



Build on respect, curiosity, and a natural process of change that honors individual autonomy

Motivational Interviewing



Engage



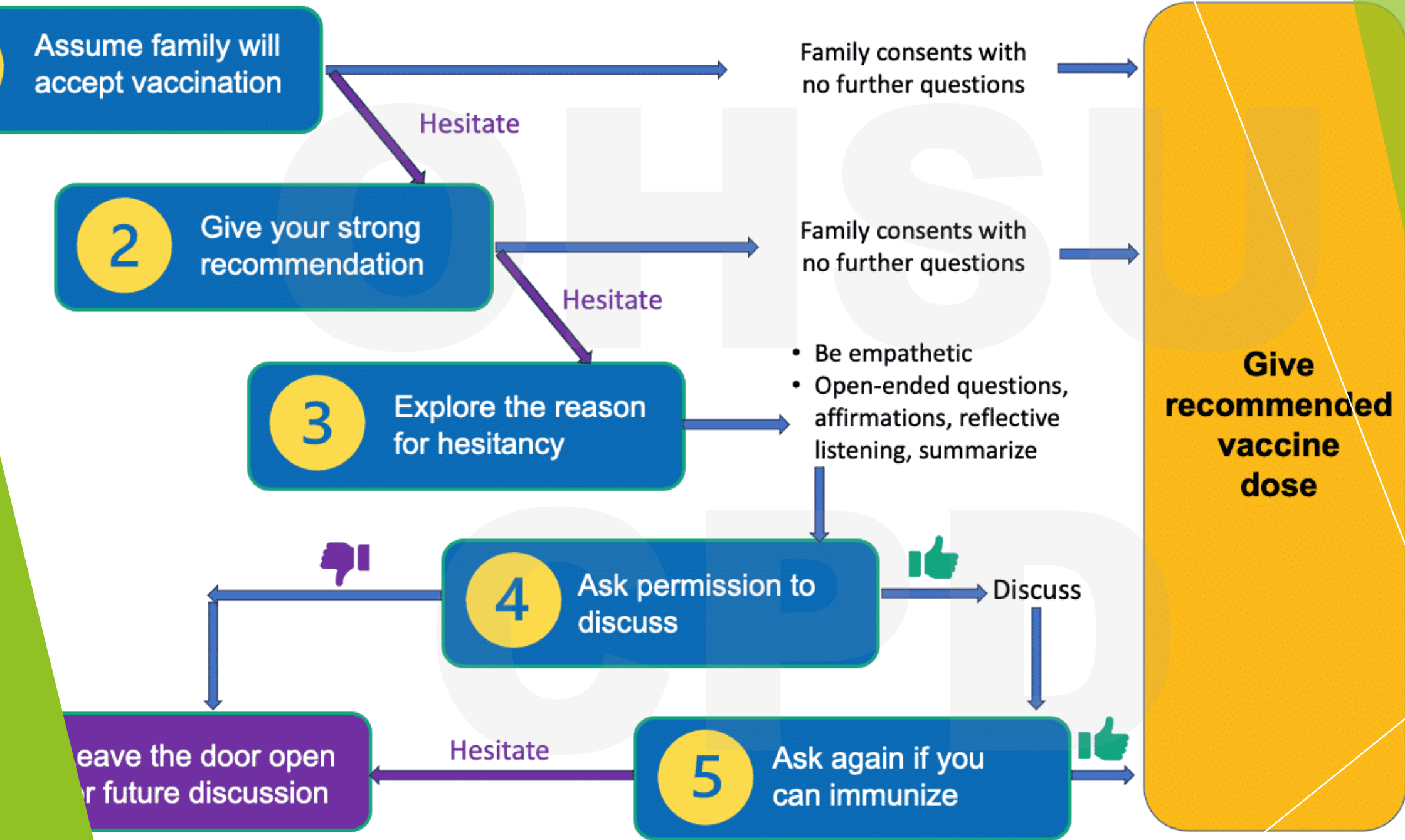
Focus



Evoke



Plan



Case discussion

- ▶ 78-year-old RO with hx of HTN, BPH, Schizoaffective DO, resides in an ICF and is independent
- ▶ He has never been interested in the covid vaccine
- ▶ He has never heard about RSV vaccine

I am doing a regular check in visit, discussed his well being, and complimented on how well he is progressing on his strength and walking skills.

- ▶ Asked him specifically if he would like to continue to improve and to think about preventive measures, such as vaccinations.
- ▶ After some thought, he agrees to get both vaccines, but would like to stagger them to be able to deal with side effects.



Role play on MI

COMMISU

CCPD

Promote Vaccination

At all meetings



Huddles

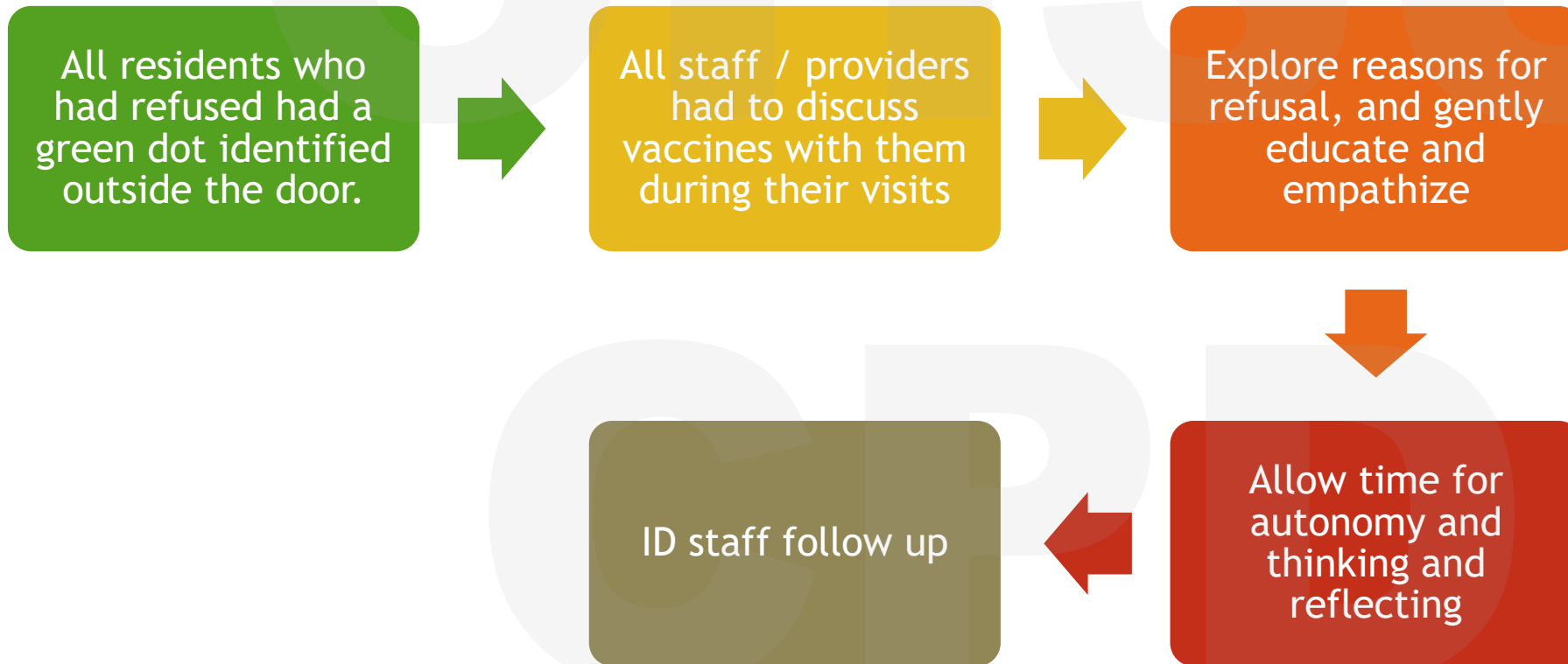


At resident council meetings



Newsletters, brochures

2025 facility plan



Results for 2025 and beyond- Residents

In Sep 2025 -

Flu 5% ; Covid 4%

Oct 2025- NOW

- Flu vaccine 80%
- Covid Vaccine 64%
- Pevnar 48.2%
- RSV 62.5%

Staff immunization rates- 2025-26

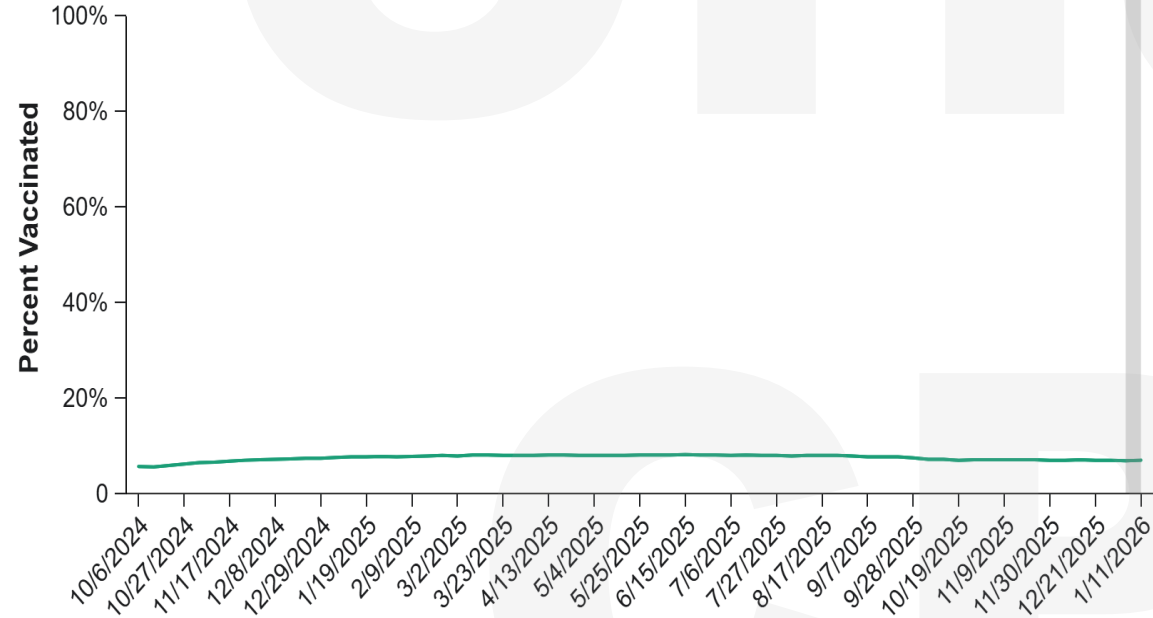
Flu vaccine
69.9 %

Covid
36.6 %

Covid vaccinations in Nursing home staff :CDC

State

US



Vaccine Type

COVID-19



Questions?

Thank You

HHSU

CPD

References

- ▶ Fry SE, Terebuh P, Kaelber DC, Xu R, Davis PB. Effectiveness and Safety of Respiratory Syncytial Virus Vaccine for US Adults Aged 60 Years or Older. *JAMA Netw Open*. 2025 May 1;8(5):e258322. doi: 10.1001/jamanetworkopen.2025.8322. PMID: 40343698; PMCID: PMC12065041.
- ▶ www.cdc.org
- ▶ www.paltc.org
- ▶ www.movingneedles.org
- ▶ <https://ubccpd.ca/learn/learning-activities/course?eventtemplate=137-motivational-interviewing>
- ▶ National Health care association
- ▶ National Center for Assisted Living
- ▶ getvaccinated.us
- ▶ www.ahcancal.org/coronavirus
- ▶ <https://www.cdc.gov/nhsn/ltc/ltc-report-overview.html>
- ▶ Stamm DR, Katta S, Stankewicz HA. Nursing Home-Acquired Pneumonia. [Updated 2023 Jul 17]. In: StatPearls [Internet]. Treasure Island (FL): StatPearls Publishing; 2025 Jan-. Available from: <https://www.ncbi.nlm.nih.gov/books/NBK537355/>