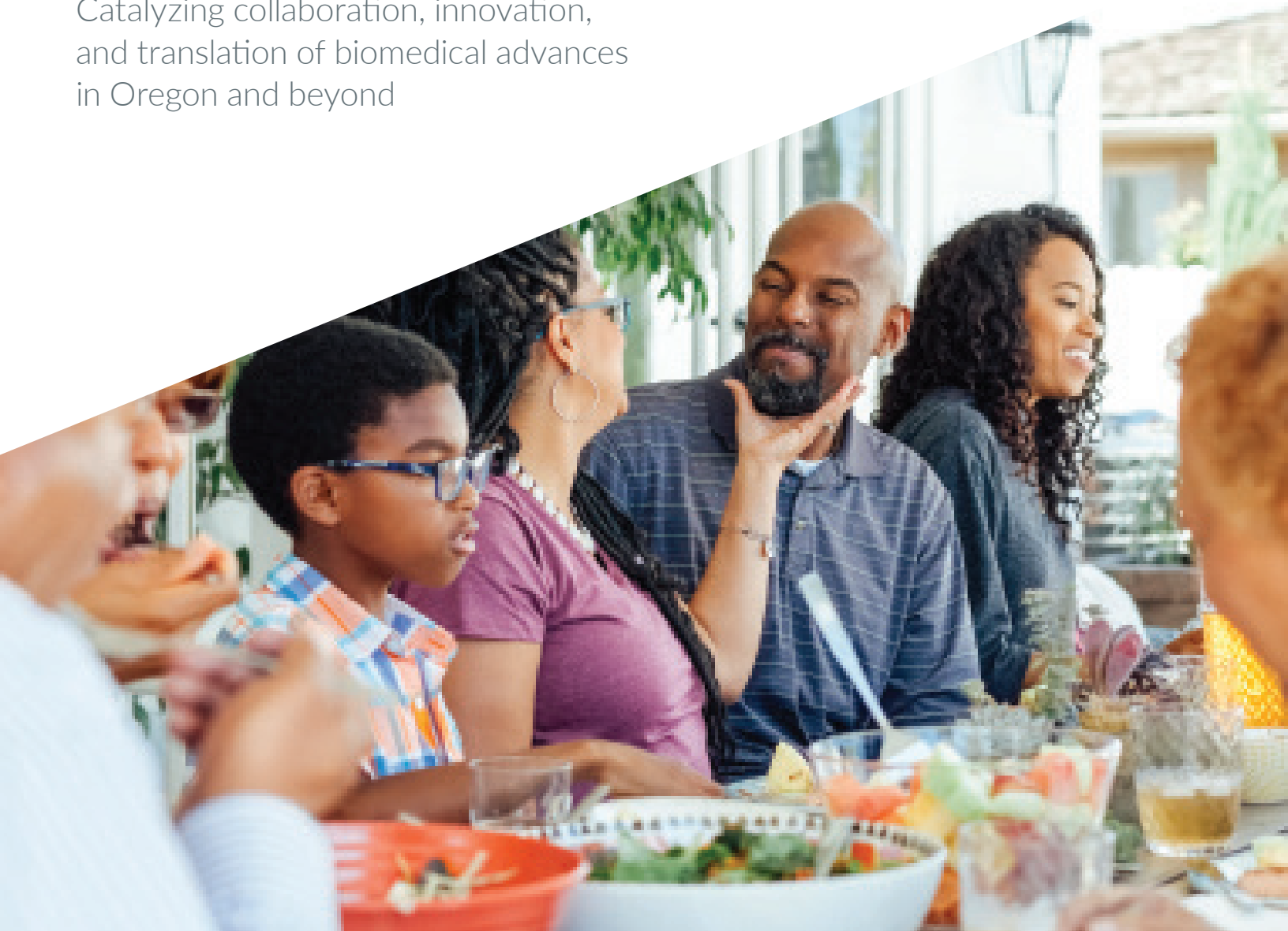


OREGON CLINICAL & TRANSLATIONAL  
RESEARCH INSTITUTE

# Oregon Clinical and Translational Research Institute

Catalyzing collaboration, innovation,  
and translation of biomedical advances  
in Oregon and beyond



[www.ohsu.edu/octri](http://www.ohsu.edu/octri)



**OREGON CLINICAL  
& TRANSLATIONAL**  
*Research Institute*

# Translating innovative research ideas into impact

To fulfill the great potential of research to improve human health, the scientific discoveries happening all over the world must be translated into practical tools and knowledge. That's the essence of what we do at OCTRI ("oak tree"). Our work and our passion is to help investigators, partners, and members of study teams remove barriers, apply best practices, and translate biomedical advances into preventions and treatments.

OCTRI is funded by the National Institutes of Health (UL1TR002369) through the Clinical and Translational Science Awards Program run by the National Center for Advancing Translational Science. OCTRI also has a significant institutional commitment from OHSU. We are a catalyst for scientific collaboration, innovation, and research growth by providing top-notch expertise, equipment, and facilities.

## OUR MISSION

To enhance the efficiency and quality of rigorously translating research ideas into impact.

## OUR IMPACT



\$140M+

Follow-on funding from  
pilot awards



1025+

Projects supported by the  
Clinical and Translational  
Research Center



1,200+

Faculty, fellows and students  
enrolled in the Human  
Investigations Program

## OUR PARTNERSHIPS

To foster and support regional scientific collaboration, OCTRI has established robust relationships with academic partners, research partners, and healthcare affiliates in Oregon and Washington State. Each brings unique assets, and each is mutually beneficial.

We have expanded our research and education missions, including our K and T career development programs, to our **academic partners** at Portland State University, Oregon State University, and University of Oregon.

We collaborate with our **research partners**, the Oregon Rural Practice-based Research Network and OCHIN, to extend and complement our capacity for community engaged research and using technology to advance health equity.

We actively engage with regional **healthcare affiliates** to extend OHSU's research capacity by providing expertise to build clinical and translational research at community hospital locations.

# Oregon Clinical and Translational Research Institute (OCTRI)



Research Support  
Services



Funding  
Opportunities



Training and  
Education



Engage  
Community

## OCTRI Research Support Services



Study design  
consultation



Data analysis



Regulatory  
consultations



Identifying your  
study population



Qualitative  
research support



Data  
management

## Invaluable support through every stage of the research process

Since 2006, OCTRI has worked to accelerate discoveries toward better health by pursuing these strategic goals:

- Catalyze translational research
- Develop the translational workforce
- Cultivate innovation in research
- Foster and support scientific collaboration
- Enhance partnerships with communities

### PROGRAMS AND SERVICES TO SUPPORT YOUR NEEDS

OCTRI provides the information, guidance, and resources that researchers need to keep their projects moving at every stage—from initial idea to publication preparation. Study teams come to OCTRI for:

- Consultation on study design and implementation with the Clinical Research Development Team.
- Expert feedback on career development grant proposals with the OCTRI Design Studio to maximize the success of early-career investigators.
- A full suite of innovative informatics tools and resources for bench-to-bedside, clinical, and health care systems research, including Epic® data through the Research Data Warehouse, REDCap for data management, and custom web applications and databases.
- Qualitative research and program evaluation support.
- Regulatory consultations.
- Help identifying and recruiting study populations, including specialized support for reaching older adults and rural communities.
- One-on-one individualized biostatistics advice sessions and training offered through the Biostatistics, Epidemiology, & Research Design (BERD) program.



The Clinical and Translational Research Center offers nursing, bionutrition, study coordination, and lab services. This includes an inpatient unit, outpatient clinic, infusion bay, phlebotomy area, metabolic kitchen, body composition and energy expenditure measurement facilities, and core laboratory.

- Support for data management and data analysis.
- Specialized research tools, including a database of qualitative, patient-centered interviews collected and managed by the Health Experiences Research Network.
- Cutting-edge methodology development to support new technology development, precision medicine, and multi-omic data modeling and integration.

### WHERE FUNDING BEGINS

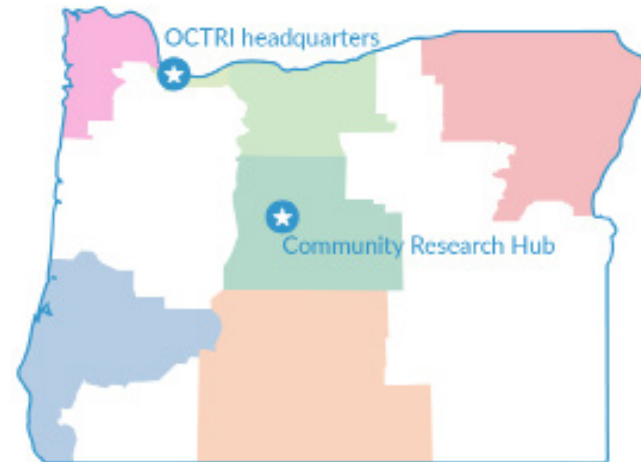
We explain how to get funded, what's expected of new grantees, how to find pilot award opportunities, and more. By connecting with OCTRI, researchers can get valuable feedback on proposals, get help preparing a budget, and learn about OCTRI funding opportunities.

For example, the Biomedical Innovation Program at OHSU—an accelerator for the delivery of health care technologies—funds and supports researchers with promising ideas for technical innovations. Visit our website to learn more.

## TRAINING AND EDUCATION TO BUILD RESEARCH SKILLS

OCTRI offers a wealth of educational and training opportunities for faculty members, fellows, students, study coordinators, mentors, and mentees, including:

- **OCTRI Research Forum:** seminar series covering solutions to common obstacles in conducting clinical and translational research.
- **OCTRI Scholars Program:** supporting early-career faculty in their transition to research independence.
- **Human Investigations Program:** integrated research curriculum with a certificate or master's degree option.
- **KL2 Program:** 2-year career development award providing research time, formal and experiential training, and multidisciplinary mentorship.
- **OSLER TL1 Program:** career development in clinical and translational research for trainees.
- **Study Coordinator Training:** in depth education through lecture, examples, and exercises on clinical research coordinator activities at OHSU
- **Entrepreneur and Innovation Education:** carefully curated programs for the busy clinician, academician, and student focused on commercializing life science technologies.
- **Physician-Scientist Experience:** 5-month or year-out mentored research experience for medical students.
- **OHSU CONNECT:** cohort-style career development program designed for post-doctoral scholars and early-career faculty pursuing health research careers.



*OCTRI Community Research Hub coverage map*

## ENGAGING WITH THE COMMUNITY

Through our community-engaged research and partnerships, we are working to improve the health and wellness of all Oregonians. Researchers, community members, and organizations are connected and supported through the OCTRI Community Research Hub, a centralized office located in Bend, Oregon. This team, including five community research liaisons who live and work in rural communities, is guided by the principles of community engagement and works to ensure that community voices are included in research.

Learn more at  
[www.ohsu.edu/community-research-hub](http://www.ohsu.edu/community-research-hub)



## A Centralized Resource for Research Guidance and Support

OCTRI Research Navigators are standing by to provide information, direction, and support for anyone who's ready to discuss their research needs.

Who can benefit from talking to an OCTRI Research Navigator?

- Investigators looking for people conducting similar research at OHSU.
- Research staff looking for training opportunities.
- New investigators at OHSU who would like a general orientation to available research resources.
- Researchers and study coordinators in need of wayfinding within the OHSU landscape.

## CONTACT OCTRI

OCTRI's administrative offices are located at Oregon Health & Science University Marquam Hill Campus in Portland, Oregon.

Mail Code: SN4N  
3181 S.W. Sam Jackson Park Road  
Portland, OR 97239-3098

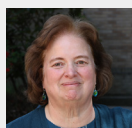
[www.ohsu.edu/octri](http://www.ohsu.edu/octri)



**503-418-9790**  
[octri@ohsu.edu](mailto:octri@ohsu.edu)



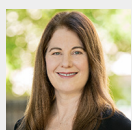
# Executive Leadership Team



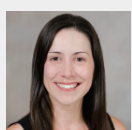
**Cynthia Morris, PhD, MPH, FAHA**  
Director and PI, OCTRI  
Director, Workforce Development  
morrisc@ohsu.edu



**Chris Larsen, MS**  
Associate Director, OCTRI  
Senior Director, Finance and Operations  
larschri@ohsu.edu



**Kathryn Schuff, MD, MCR**  
Assistant Director, OCTRI  
Director, Translational Science  
schuffk@ohsu.edu



**Trish Pruis, PhD**  
Assistant Director, Strategic Planning  
and Communications  
pruist@ohsu.edu



**Christopher Slatore, MD, MS**  
Co-Director, OCTRI  
slatore@ohsu.edu

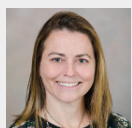


**Mary Samuels, MD**  
Assistant Director, OCTRI  
Director, Clinical and Translational Research Center  
samuelsm@ohsu.edu



**Jackie Shannon, PhD, RD**  
Associate Director, OCTRI  
Director, OCTRI Community Research Hub  
shannoja@ohsu.edu

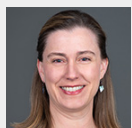
## Program Directors



**Bridget Adams, MSHS, CCRA**  
Assistant Director, Regulatory  
Knowledge and Support  
adamsb@ohsu.edu



**Mohammad (Adib) Adibuzzaman, PhD**  
Director, OCTRI Informatics  
adibuzza@ohsu.edu



**Barbara Brumbach, PhD**  
Co-Director, Biostatistics,  
Epidemiology, and Research Design  
brumbacb@ohsu.edu



**Erika Cottrell, PhD, MPP**  
Director, Health Experiences  
Research Network  
cottrele@ohsu.edu



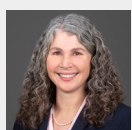
**Melinda Davis, PhD, MCR**  
Director, OCTRI Community  
and Collaboration  
davismel@ohsu.edu



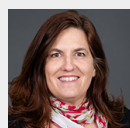
**Allison Fryer, PhD**  
Director, TL1 Program  
fryera@ohsu.edu



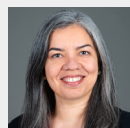
**Matt Honoré, MPA**  
Director, Evaluation Core  
honore@ohsu.edu



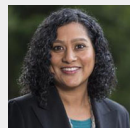
**C. Terri Hough, MD, MSc**  
Director, KL2 Program  
houghc@ohsu.edu



**Jodi Lapidus, PhD**  
Director, Biostatistics, Epidemiology,  
and Research Design  
lapidusj@ohsu.edu



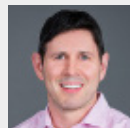
**Aditi Martin, PhD**  
Director, Innovation Programs & Awards  
martiad@ohsu.edu



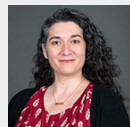
**Jessina McGregor, PhD**  
Director, TL1 Program  
mcgregoj@ohsu.edu



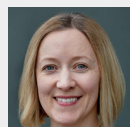
**Katie Mosack, PhD**  
Director, Human Investigations Program  
mosack@ohsu.edu



**Donald Sullivan, MD**  
Associate Director, KL2 Program  
sullivad@ohsu.edu@ohsu.edu



**Kitt Swartz, MPH**  
Director, Clinical Research Support and  
Project Implementation  
swartzk@ohsu.edu



**Anna Wilson, PhD**  
Director, TL1 Program  
longann@ohsu.edu