

# ORH Community Conversations: CAH, RHC and Population Health Program Updates

July 24, 2025

Sarah Anderson  
Director of Field Services

Stephanie Sayegh  
Program Manager  
CAH Quality Improvement

Rondyann Gerst  
Program Manager  
Rural Health Clinics

Stepha Dragoon  
Program Manager  
Population Health

*The mission of the Oregon Office of Rural Health is to improve the quality, availability and accessibility of health care for rural Oregonians.*

*The Oregon Office of Rural Health's vision is to serve as a state leader in providing resources, developing innovative strategies and cultivating collaborative partnerships to support Oregon rural communities in achieving optimal health and well-being.*

## Upcoming Community Conversations Webinars

Sept. 18, 12:00 p.m. -1:00 p.m.: Health Care Workforce Strategy -- Students and Health Care Workforce Pipeline/Pathways

Nov. 20, 12:00 p.m. -1:00 p.m.: National Rural Health Day: Celebrating Rural Health in Oregon

<https://www.ohsu.edu/oregon-office-of-rural-health/orhs-bimonthly-community-conversations>

REMINDER: Oregon Rural Health Conference, October 1-3 in Bend.

## Today's Agenda

- Overview of ORH Field Services Team – Sarah Andersen
- Small Rural Hospital Improvement Program (SHIP) – Stephanie Sayegh
- CAH Quality Improvement Activities – Stephanie Sayegh
- Financial and Operational Improvement | CAHs + Data and Reports – Sarah Andersen
- Financial and Operational Improvement | RHCs – Rondyann Gerst
- Population Health – Stepha Dragoon



# ORH Field Services Team



## ORH Field Services Team Goals

- The Primary Objective:
  - To assist rural Oregon communities to pilot, develop and improve evidence-based health care delivery systems. The team also helps to increase the ORH voice in state decision-making.
- Goals:
  - Provide current data and funding support
    - Data and analysis
    - Grant administration/demonstration projects
  - Provide proactive technical assistance for rural health care facilities and communities
    - RHCs: certification, compliance and operations
    - CAHs: Flex grant (quality improvement, finance and operations, population health) and SHIP grant
    - EMS: Flex grant (quality improvement, and finance and operations, includes EMS/CAH emergency simulations, plus the Flex EMS supplement grant: EMS workforce recruitment and retention



## The Flex and SHIP Grants

- Flex (HRSA): CAHs
  - Approximately \$800K/year
  - Currently a five-year cycle: September 1, 2024 through August 31, 2029
  - Quality Improvement
  - Financial and Operational Improvements
  - Population Health
  - EMS Integration + EMS Supplement Grant
- SHIP (HRSA): Rural Hospitals
  - Award up to \$375K annually/approx. \$11,000 per eligible hospital (31 total in OR)
  - Pass-through
  - Five-year cycle: June 1, 2023 through May 31, 2028
  - Support of quality improvement and reporting activities
  - ACO and shared savings programs
  - Payment bundling or prospective payment systems

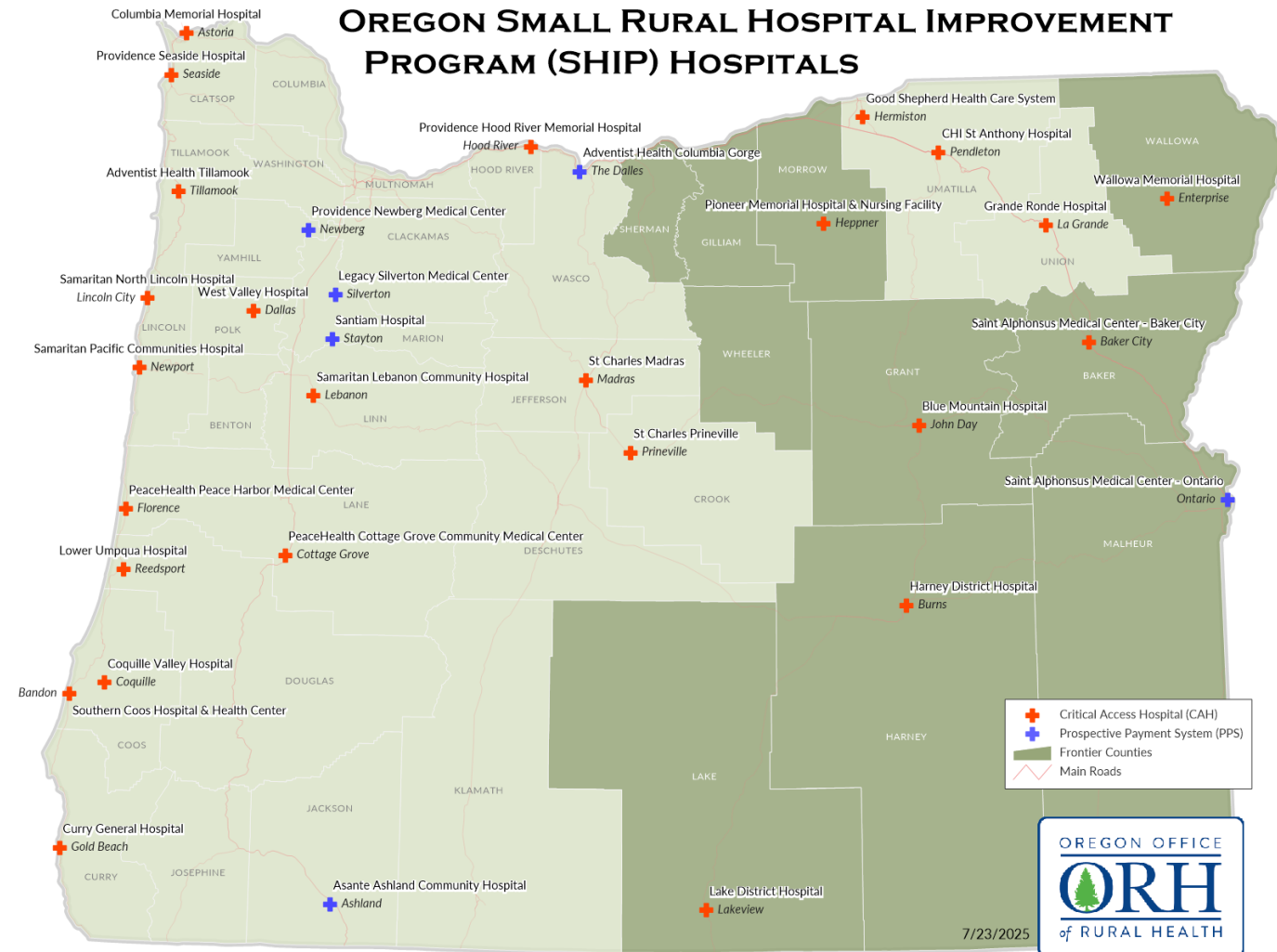


## Small Rural Hospital Improvement Program (SHIP)



## Small Hospital Improvement Program (SHIP) – Stephanie Sayegh

- Funds disseminated through ORH to support rural hospitals with 49 beds or fewer.
- Oregon has 31 SHIP-eligible hospitals







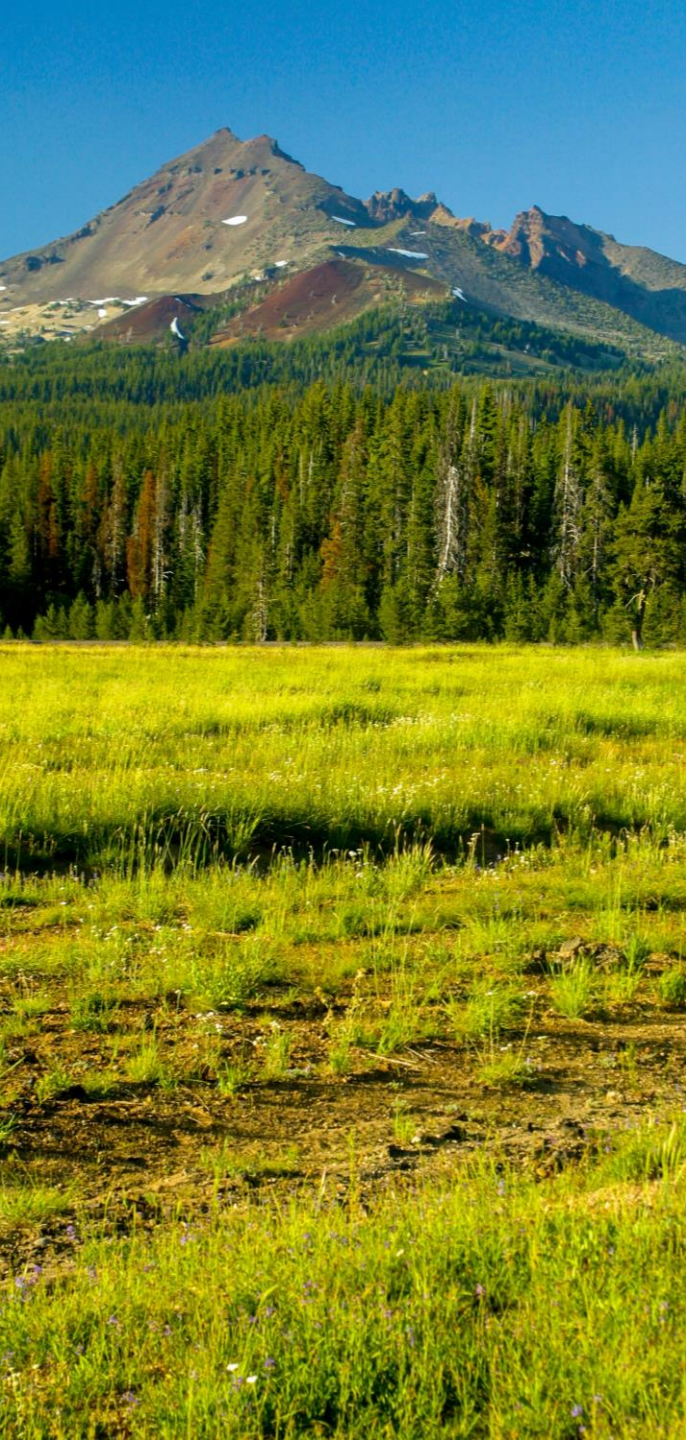
## Small Hospital Improvement Program (SHIP) – Stephanie Sayegh

- For FY25 (June 1, 2025 – May 31, 2026), the award is \$11,138 per hospital awarded to support eligible efforts
- Pooled options (i.e., outside vendor – reduced administrative burden)
  - Stratis Health
  - Healthcare Safety Solutions (HSS)
  - Wipfli
  - Wintergreen



“Quality is everyone’s responsibility.”  
– W. Edwards Deming





## CAH Quality Improvement (QI) – Stephanie Sayegh

- **Goal:** Recognizing the importance that quality health care and the patient experience have on community health outcomes and CAH sustainability, ORH continues to support CAH's QI efforts and reporting on all Medicare Beneficiary Quality Improvement Project (MBQIP) measures. ORH aims for all 25 Oregon CAHs to perform above the national average on each MBQIP measure by FY28.
- **Provide support and resources to CAHs to be successful in reporting MBQIP measures:**
  - Rural relevant quality measures aimed to improve the quality-of-care that patients receive in a CAH setting
- **Provide support and resources to CAHs to be successful in their overall QI efforts:**
  - Encourage facilities evaluate data to identify opportunities for improvement
  - Encourage QI efforts to improve the quality of care as well as improve patient satisfaction





CAH Quality Improvement (QI) – Stephanie Sayegh

- MBQIP reporting is required for CAHs to participate in any SHIP and Flex-funded activity:

MBQIP 2025 Core Measure Set				
Global Measures	Patient Safety	Patient Experience	Care Coordination	Emergency Department
<b><sup>+</sup>^CAH Quality Infrastructure</b> <i>(annual submission)</i>	<b>*HCP/IMM-3:</b> Influenza Vaccination Coverage Among Healthcare Personnel (HCP) <i>(annual submission)</i>  <b>*Antibiotic Stewardship:</b> Measured via Center for Disease Control National Healthcare Safety Network (CDC NHSN) Annual Facility Survey <i>(annual submission)</i>  <b>^Safe Use of Opioids (eCQM)</b> <i>(annual submission)</i>	<b>*Hospital Consumer Assessment of Healthcare Providers and Systems (HCAHPS)</b> <i>(quarterly submission)</i>	<b>^Hybrid Hospital-Wide Readmission</b> <i>(annual submission)</i>  <b>^Social Drivers of Health Screening</b> <i>(annual submission)</i>  <b>^Social Drivers of Health Screening Positive</b> <i>(annual submission)</i>	<b>*Emergency Department Transfer Communication (EDTC)</b> <i>(quarterly submission):</i>  <b>*OP-18:</b> Median Time from ED Arrival to ED Departure for Discharged ED Patients <i>(quarterly submission)</i>  <b>*OP-22:</b> Patient Left Without Being Seen <i>(annual submission)</i>





## CAH Quality Improvement (QI) – Stephanie Sayegh

### ORH Activities:

- **Antimicrobial Stewardship (ASP) Education**
  - Intermountain Health ECHO-like program and 1:1 technical assistance
  - Virtual education, infectious disease experts, and pharmacists provide guidance and tools to improve antimicrobial practices
- **[CAH Quality and Reporting Guide](#)**
  - Stratis Health - Other state Flex programs (AZ, ID, SD, UT, MT, WA)
  - Annual guide to help CAHs navigate mandatory vs. optional quality reporting programs; includes dashboards and reporting tools
- **MBQIP Monthly Newsletter and Announcements**
  - Published by Rural Quality Improvement Technical Assistance (RQITA)
  - Keeps CAHs informed of the quality and MBQIP landscape and activities offered by ORH



## CAH Quality Improvement (QI) – Stephanie Sayegh

- **CAH Quality 101/Turning Data into Improvement (biennial rotation)**
  - Runyan Health Care Quality Consulting
  - CAH Quality 101 (Virtual):
    - New and experienced quality professionals
    - MBQIP measures, reporting, PDSA cycle, and data-driven improvements
  - Turning Data into Improvement (In-person):
    - Deep dive into PDSA improvement methods
    - Develop actionable QI projects
- **[Oregon CAH Quality and MBQIP Workshop \(in-person annual event\)](#)**
  - Emerging topics, MBQIP updates, expert speakers
  - Peer learning and practical quality improvement discussions
- **Certified Professionals in Healthcare Quality (CPHQ)**
  - Professional development opportunity to prepare quality professionals to lead quality efforts





## CAH Quality Improvement (QI) – Stephanie Sayegh

- **Oregon CAH Quality Network (OCQN)**
  - Monthly virtual meetings for peer sharing and QI collaboration
  - Two regional in-person site visits per year
  - Facility tours
  - Sharing of successful QI practices and leadership strategies
  - Networking and collaborative learning
- **Patient and Family Engagement (PFE)/Social Drivers of Health (SDoH) Cohort**
  - Virtual series led by Runyan Health
  - Screening and addressing health-related social needs (HRSNs)
  - Support patient/community engagement in QI related to SDoH
- **Oregon Rural Health Excellence Award (ORHEA)**
  - Apply by August 31
  - Recognition for hospitals, clinics, EMS, and CBOs
  - Innovation, teamwork, and success in improving quality and outcomes in rural communities
- **MBQIP.com Access**
  - Centralized CAH data portal
  - Display and monitor MBQIP quality measures









## Financial and Operational Improvement | CAHs – Sarah Andersen

- Critical Access Hospitals (CAHs)
  - Assist hospitals to convert to CAH status
  - Conduct [Rural Health Listening Sessions](#) (once every three years)
  - [National Rural Health Association CEO/CFO/CNO/RN/HR/Board of Trustees Leadership Certification](#) scholarships
  - Financial/service line data and dashboards
  - Quarterly review of all CAH financial and operational data
  - Five webinars focused on finance and operations improvement in 2025
  - Board of Directors On Demand Training
  - CEO/CFO/CNO Peer Networks
  - Technical assistance

## Data and Analysis – Emerson Ong

- [The Areas of Unmet Health Care Need \(AUHCN\) in Rural Oregon Report](#)
  - Ranks all 130 Primary Care Service Areas in the state according to nine variables measuring access to primary, dental, and mental health care
- [Service Area Profiles](#)
- Customized data analysis, presentations and mapping
- Ad hoc reports



## Financial and Operational Improvement | RHCs – Rondyann Gerst

- **RHC Regulatory Compliance Cohort - August 2025 - June 2026**
  - Monthly virtual meetings, subject experts, state surveyor presentation
  - 1:1 coaching and technical assistance, PDSA cycle, and completion of actionable PI project
  - Networking and collaborative learning
- **RHC Mock Survey Program**
  - Identify deficiencies, boost staff confidence, and ensure survey readiness
  - Free scheduled on-site surveys, and [RHC Pre-Inspection Practice Tool](#)
- **RHC Track at the Annual Oregon Rural Health Conference – [October 1-3, 2025 in Bend](#)**
  - Eight RHC focused sessions, subject experts, peer sharing and networking

## Financial and Operational Improvement (cont.) | RHCs – Rondyann Gerst

- **RHC Quality 101 Cohort – January – June 2026**
  - Susan Runyan of Runyan Health Care Quality Consulting
  - Monthly virtual meetings, fundamental quality improvement concepts and tools
  - In-depth guidance on PDSA methodology with 1:1 coaching
- **Oregon RHC Financial Benchmarking and Analysis Training – August 5, [Register for Part 1](#), August 6, [Register for Part 2](#)**
  - Ralph Llewellyn, CPA, Eide Bailey, two-part virtual training
  - Cost report data, Oregon RHC benchmarks, and best practices
- **New - RHC Financial Health Winter Learning Series – October 2025 – February 2026**
  - Five-part virtual learning series on RHC financial and operational improvement
  - Lead by Patty Harper, InQuiseek

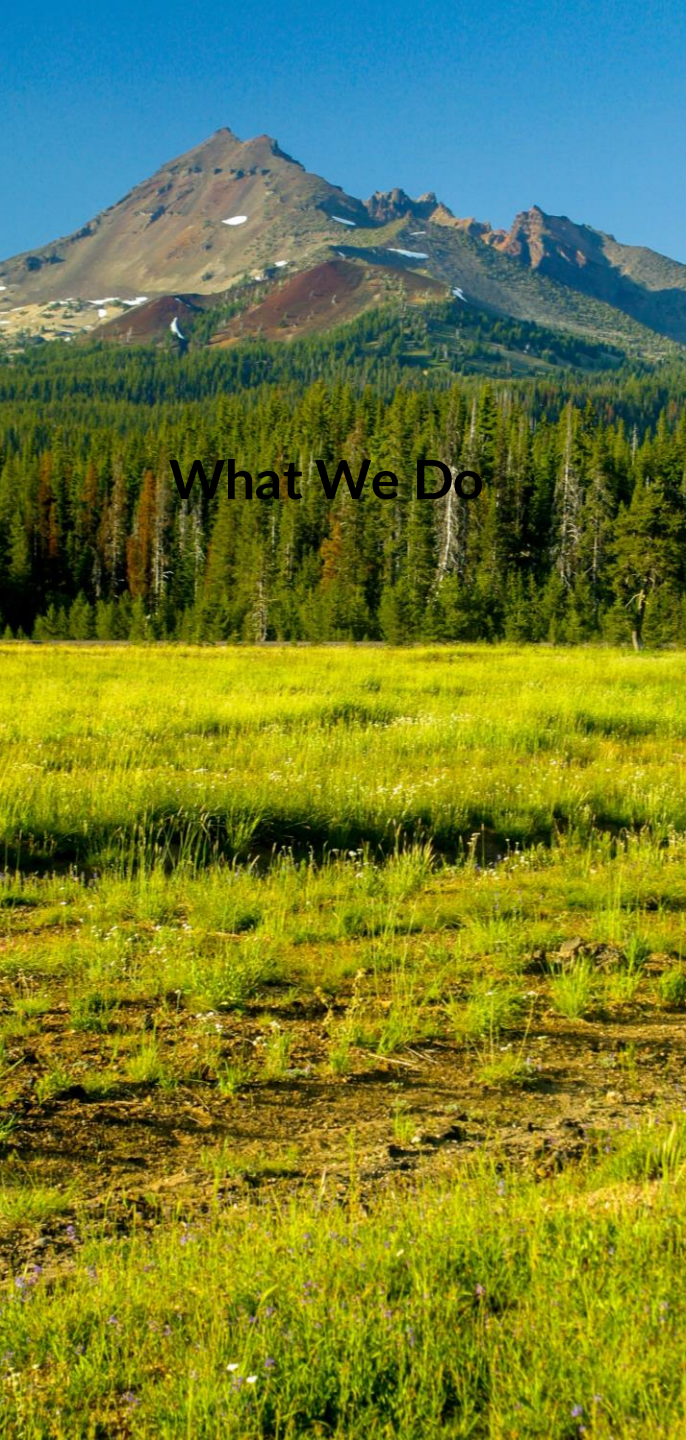




## Financial and Operational Improvement (cont.) | RHCs – Rondyann Gerst

- **Professional Development Scholarships**
  - Oregon Healthcare Leaders Association membership and PNW Medical Management Conference
  - Certified Rural Health Clinic Professional (CRHCP) course scholarship
  - Spring NARHC 2025 Institute scholarship
  - Annual Oregon Rural Health Conference scholarship
- **RHC Webinars**
  - RHC Advanced Coding and Billing, Chronic Care Management, Behavioral Health, National Legislative and Regulatory Policy Update, and more
  - **New** - Working in an RHC - [Recorded presentation](#)
  - **New** - A Manager's Introduction to the RHC - [Recorded presentation](#)
- **RHC Network Calls**
  - Virtual network session, current challenges, share ideas and foster communication
- **Bi-weekly RHC Newsletter** | Subscribe [here](#)
  - Specific to Oregon, updates, events, webinars, and funding opportunities
- **Technical assistance – Rondyann Gerst** [gerst@ohsu.edu](mailto:gerst@ohsu.edu) | 503-312-3907





## What We Do

# Population Health Initiatives – Stepha Dragoon

- [Forum on Rural Population Health](#)
  - The May in-person Forum was a success!
  - Next Forum will be held virtually on May 14-15, 2026
  - Request for presentation proposals will be released in November
- [Rural Population Health Incubator Program](#)
  - Awarded 13 grants this cycle
  - Partnership with the Roundhouse Foundation
  - Grant cycle will open again in 2026
- [Community Health Worker programs](#)
  - Grant-funded CHW trainings
    - 24 CHW trainees who work for rural hospitals, clinics, or public health
  - Rural CHW Network
    - Over 150 members statewide
  - Monthly Rural CHW peer meet up
- [Oregon Rural Health Resource Hub](#)



A gravel road winds through a field of yellow flowers under a blue sky with white clouds. The road is made of grey gravel and leads towards a line of trees in the distance. The field is filled with yellow flowers, and there are some tall grasses on the sides. The sky is bright blue with many white, fluffy clouds. In the background, there are rolling hills and a line of trees. On the left side, there is a small, cylindrical structure, possibly a well or a silo, and a pile of dark soil or compost.

Questions and discussion



Sarah Andersen  
Director of Field Services  
[ansarah@ohsu.edu](mailto:ansarah@ohsu.edu)

Stepha Dragoon  
Program Manager – Population Health  
[dragoon@ohsu.edu](mailto:dragoon@ohsu.edu)

Emerson Ong  
Data/GIS Analyst  
[ong@ohsu.edu](mailto:ong@ohsu.edu)

Stephanie Sayegh  
Program Manager – CAH Quality Improvement  
[sayegh@ohsu.edu](mailto:sayegh@ohsu.edu)

Rondyann Gerst  
Program Manager – RHCs  
[gerst@ohsu.edu](mailto:gerst@ohsu.edu)