

DIAGNOSTIC RADIOLOGY

Discover Your Future at OHSU

Diagnostic Radiology Faculty Opportunities

OHSU is Oregon's only academic health center, a nationally renowned leader in healthcare, education, and research. We're dedicated to improving the health and well-being of our communities while advancing innovation in medicine.



Mission: To provide high quality radiology services in a collaborative and respectful environment that focuses on the well-being of patients and healthcare workers, through integrated clinical practice, education and research.

Highlights: Ranked among the nation's top research institutions, with cutting-edge medical facilities and a commitment to diversity and inclusion.

Location: Nestled in Portland, Oregon, OHSU combines the energy of a major urban center with the beauty of the Pacific Northwest.



Our Technology

We leverage cutting-edge technology to provide unparalleled diagnostic capabilities. Our department is home to Oregon’s only PET/MRI scanner, a state-of-the-art system combining molecular and structural imaging for precise diagnostics. We utilize Visage for advanced imaging visualization and Powerscribe for efficient radiology reporting.

With a robust array of imaging equipment across multiple locations, we ensure comprehensive imaging services tailored to a wide variety of patient needs. This technological excellence supports our commitment to innovative care, research, and education.

MRI: Six MRI units, including 3T MRI scanners, offering high-resolution imaging for detailed anatomical and functional assessments.

CT: 10 CT scanners, featuring a 128-slice scanner and three units with iDose technology for dose reduction, ensuring precise imaging with minimized radiation exposure.

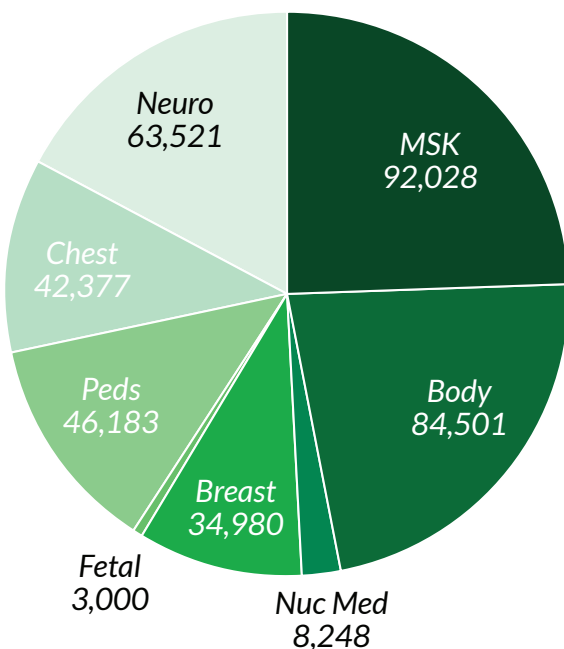
PET/MRI: A state-of-the-art PET/MRI scanner that combines molecular and structural imaging, enhancing diagnostic accuracy.

Ultrasound and Vascular: Advanced ultrasound systems for real-time imaging of soft tissues, blood flow, and vascular structures.

X-ray and Fluoroscopy: Digital X-ray and fluoroscopy units for rapid imaging and dynamic studies of various anatomical regions.

Nuclear Medicine: Specialized equipment for nuclear imaging procedures, including SPECT and PET scans, to assess organ function and detect abnormalities.

Our Volumes



Approximately 140,000 examinations are performed in OHSU Diagnostic Radiology each year. In addition, the affiliated Portland VA Medical Center and Shriners Children’s Hospital are co-located on the Marquam Campus, increasing the department’s exposure to a wide variety of clinical pathologies.



Our Subspecialties

We employ sub-specialized radiologists and several full-time staff physicists. We have a multitude of reading rooms equipped with PACS workstations for reviewing and dictating scans. Image processing workstations including Philips, Invivo, and Visage are available for image analysis, perfusion, DTI, and functional MR imaging processing.

Body Imaging

The Body Imaging section provides a comprehensive range of diagnostic services. The state of the art CT, MRI, ultrasound, x-ray, and fluoroscopy services using the latest imaging techniques offer the most advanced evaluation for abdominal and pelvic pathology. The body section also performs a broad range of interventional procedures under CT or ultrasound-guidance, including solid organ biopsies and aspirations.

Breast Imaging

The Breast Imaging section offers a full range of services. Breast imaging services include 3D screening and diagnostic mammography, breast ultrasound, MRI, and interventional procedures.

Cardiothoracic Imaging

Cardiothoracic Imaging offers basic to advanced imaging care. We use standard radiographs and CT on a daily basis. MRI is occasionally used for more advanced problem solving and mediastinal diseases or in younger patients with radiation exposure issues.

Molecular Imaging and Therapy

The Molecular Imaging and Therapy section uses small amounts of radioactive materials to either image the function of organs or systems within the body or to treat disease. Our clinical mission is to provide advanced, high-quality, safe, and comfortable radionuclide-based imaging and therapy for all our patients.

Musculoskeletal Imaging and Intervention

The Musculoskeletal Imaging section provides comprehensive evaluation of bones, joints, muscles, and nerves. A complete spectrum of imaging modalities is employed, including MRI, CT, ultrasound, x-ray and fluoroscopy, and all studies are performed on state of the art equipment.

Neuroradiology

The Neuroradiology section offers a full range of state of the art CT and MRI services for the neuroaxis including the brain, spinal cord, skull, orbits, sinuses, temporal bone, and neck of the adult and pediatric patient.

Pediatric Radiology

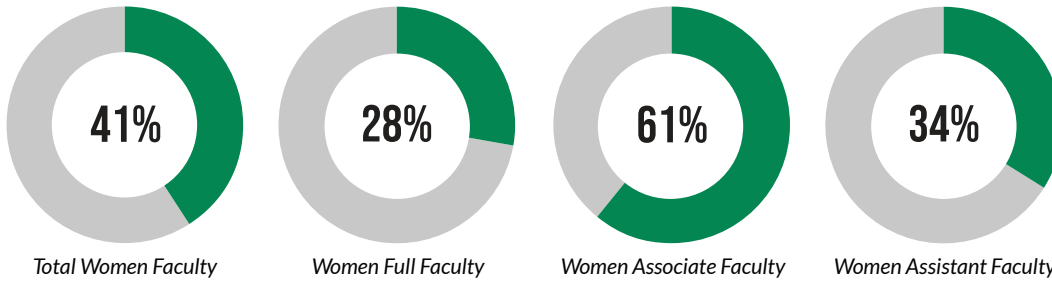
The Pediatric Radiology at OHSU Doernbecher offers a full range of body imaging services for newborns, infants, children, and teenagers. Each of our physicians has completed subspecialty fellowship training in pediatric radiology and is certified by the American Board of Radiology in both diagnostic radiology and pediatric radiology.



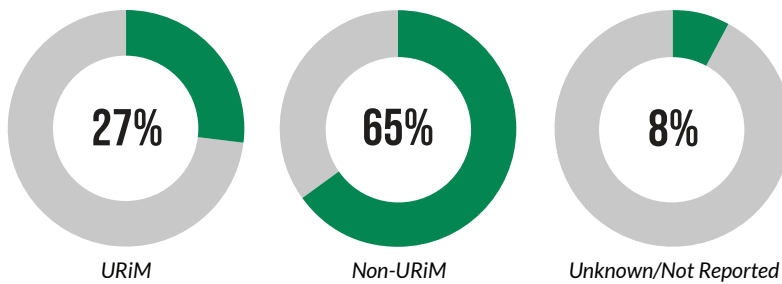
Faculty by the Numbers

Our mission is to eliminate gender disparities and ensure equal opportunities for individuals identifying as women or gender diverse at all levels. We strive to empower them with a voice to address inequalities, foster career advancement, and support leadership opportunities free from bias.

The chart below highlights the representation of women within our faculty.



The chart below presents our data on underrepresented minority (URiM) faculty. URiM refers to racial and ethnic groups that are underrepresented in the medical profession relative to their proportion in the general population.



Our strengths begin with our people. We are on the forefront of technology but our department consists of more than 450 people who really make the difference. All of our highly qualified professionals share a commitment to provide excellent service, high standards of quality and safe patient care.



Why Join the Diagnostic Radiology Team?

Excellence in Imaging and Innovation

OHSU's Diagnostic Radiology Department is a hub for advanced clinical care, teaching, and groundbreaking research.

Key Faculty Structure Stats

- Equitable for rank shift-based compensation plan
- Guaranteed academic day per week on average for 1.0 FTE
- Nearly 100% Promotion Request success rate over 10 years
- Departmental Medical Physics Section and Medical Physics Residency Program
- Protected administrative time for nearly 30 disaggregated leadership positions

Professional Growth: Leadership and mentorship opportunities, continuing education, and support for conferences.

Cutting-Edge Research: Access to funding and collaboration on groundbreaking studies.

Competitive Benefits

- Comprehensive health and dental insurance
- Generous retirement plans and employer contributions
- Paid parental leave and wellness programs

Work-Life Balance: Flexible scheduling options, ample PTO, and family-friendly policies.

Living in Portland, Oregon

Professional Excellence: Work at Oregon's leading academic medical center with access to cutting-edge imaging and research facilities.

Outdoor Adventures: Enjoy easy access to hiking, skiing, and exploring via the Oregon Coast, Mt. Hood, and Columbia River Gorge.

Cultural Richness: Savor Portland's world-class food scene, arts, and live music.

Family-Friendly: Top-rated schools, family attractions like OMSI and the Oregon Zoo, and inclusive communities.

Convenient Living: Walkable, bike-friendly neighborhoods and efficient public transit.

Join Our Team!

We're excited to meet compassionate, driven professionals ready to advance the field of diagnostic radiology.

Contact Us:

Katie Manoogian | Department Administrator
fosterka@ohsu.edu | 503-494-5601

