



A Collection of Pain

Kim Mauer, MD, MBA

Oregon Health and Science University

October 20, 2024

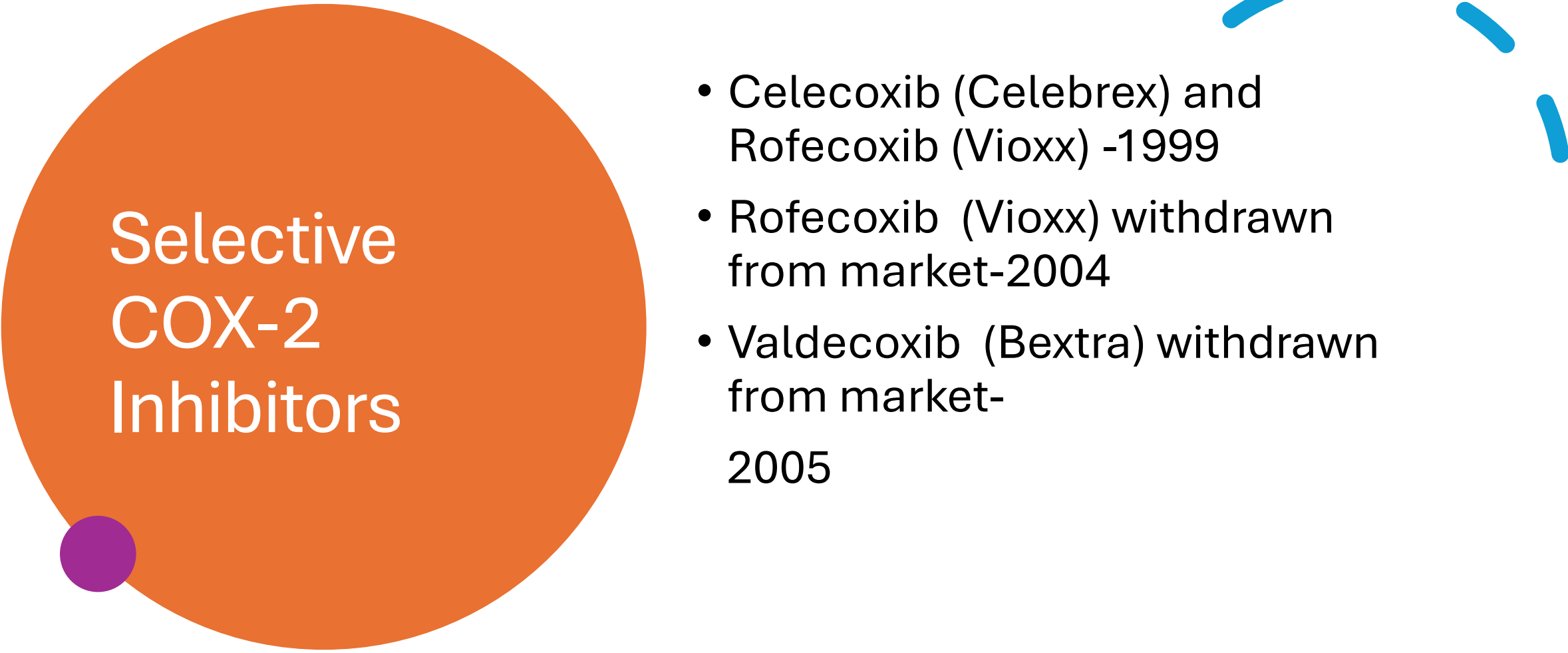


No disclosures

Agenda

- NSAIDs
- PCAs
- Ketamine
- Regional Blocks





Selective COX-2 Inhibitors

- Celecoxib (Celebrex) and Rofecoxib (Vioxx) -1999
- Rofecoxib (Vioxx) withdrawn from market-2004
- Valdecoxib (Bextra) withdrawn from market-2005

NSAIDS-The final verdict

1

No NSAID has been proven significantly more efficacious

- Select agents based on toxicity profiles?
- Side-effect rates generally parallel half-life profiles

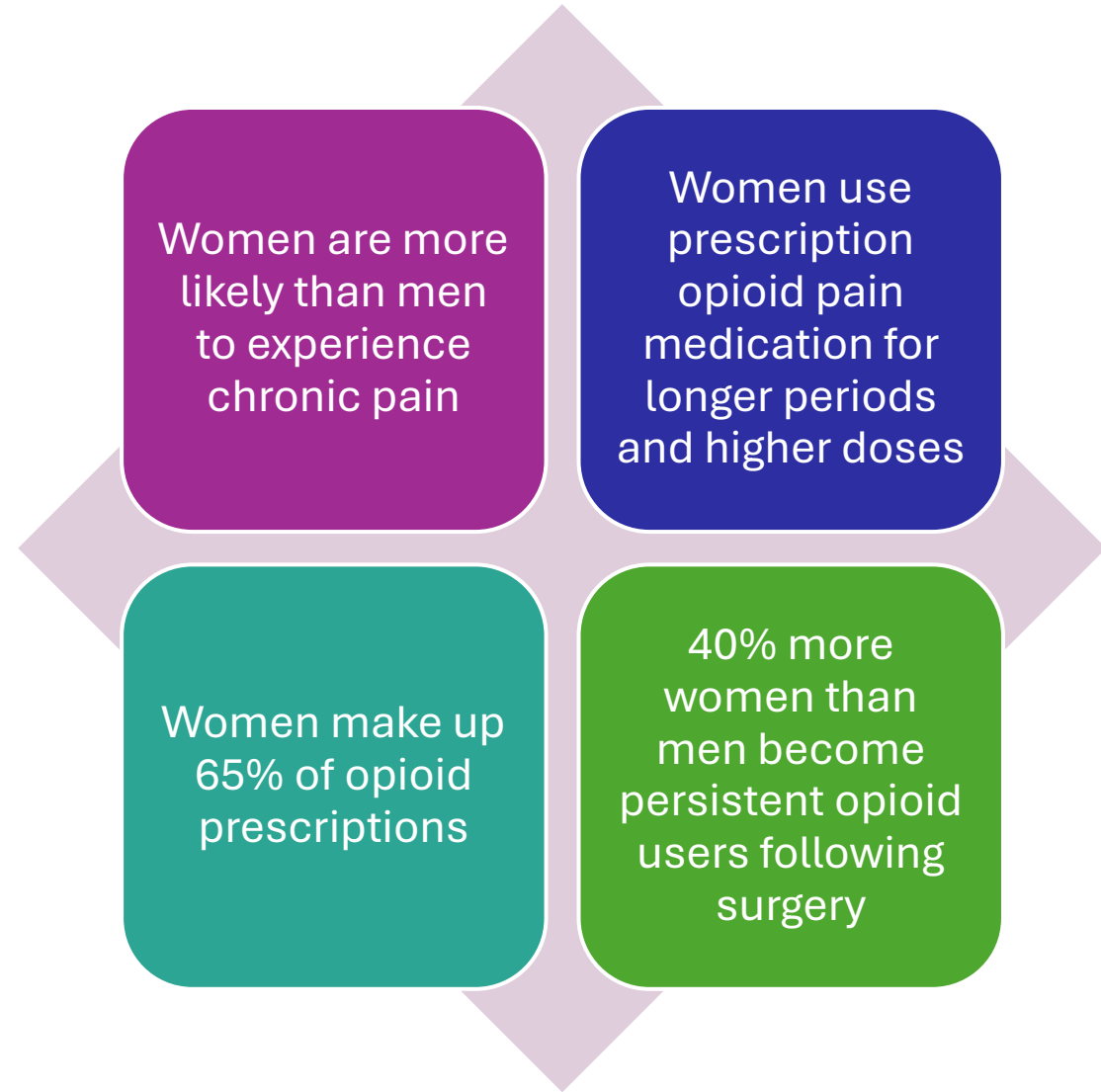
2

Pt. response can vary between agents

3

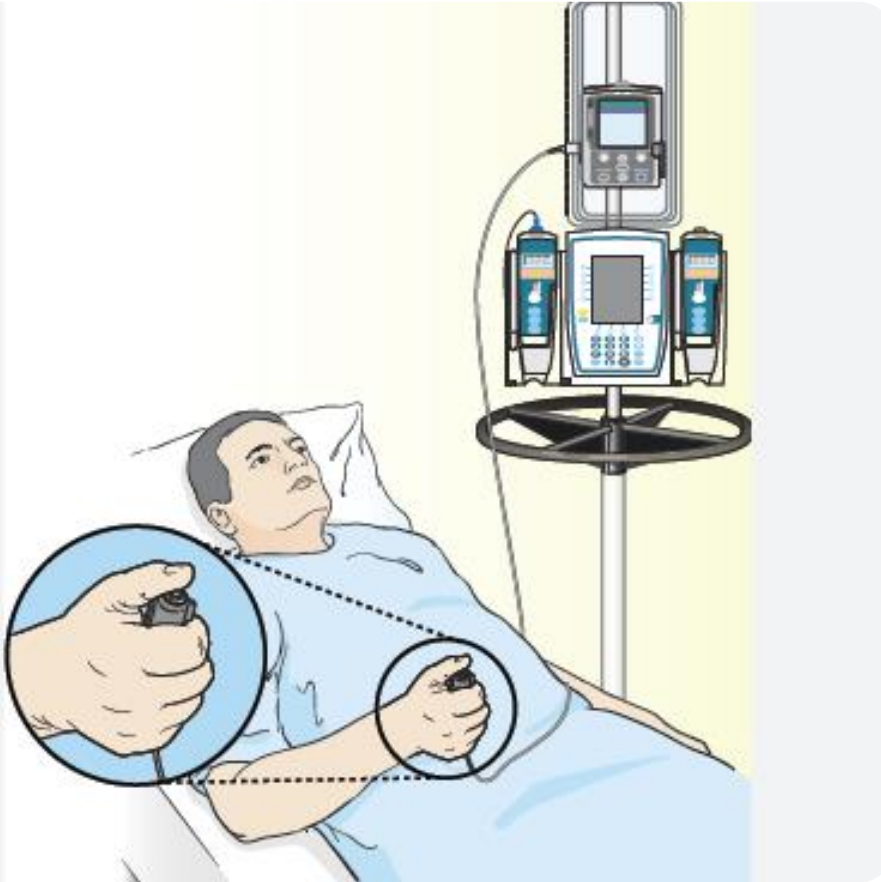
No difference in efficacy by mode of administration

Opioids and Women: From Prescriptions onward



Different PCA Solutions

- Fentanyl
- Hydromorphone
- Sufentanil
- Alfentanil
- European options
- Morphine



Ketamine Infusion

- Used as an anesthetic since the 1960s
- OR/ICU anesthesia & sedation
- Use in emergency departments and by EMS
- Depression/other psychiatric indications-

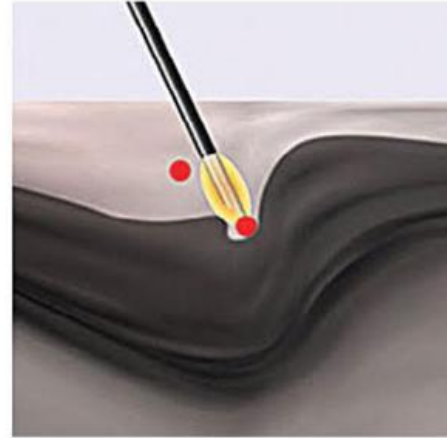
*--the mood-enhancing effects appear to emerge in approximately 4 hours, after most of the drug has been cleared from circulation, and persist for up to 2 weeks, long after the acute analgesic effects dissipate**

- Pain management:
 - Acute pain- for hospitalized patients
 - Chronic pain, certain pain conditions, CRPS

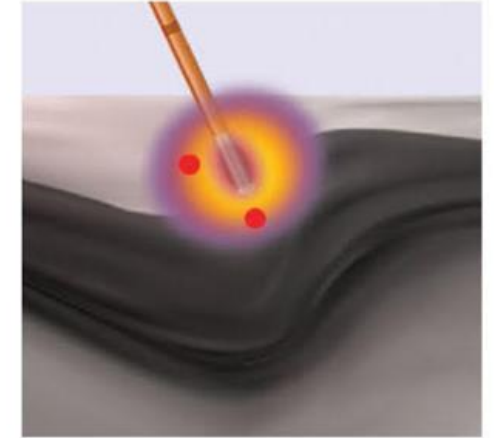
*Abdallah CG, Adams TG, Kelmendi B, Esterlis I, Sanacora G, Krystal JH. Ketamine's mechanism of action: a path to rapid-acting antidepressants. *Depress Anxiety*. 2016;33:689–697



Compliments of Coolief



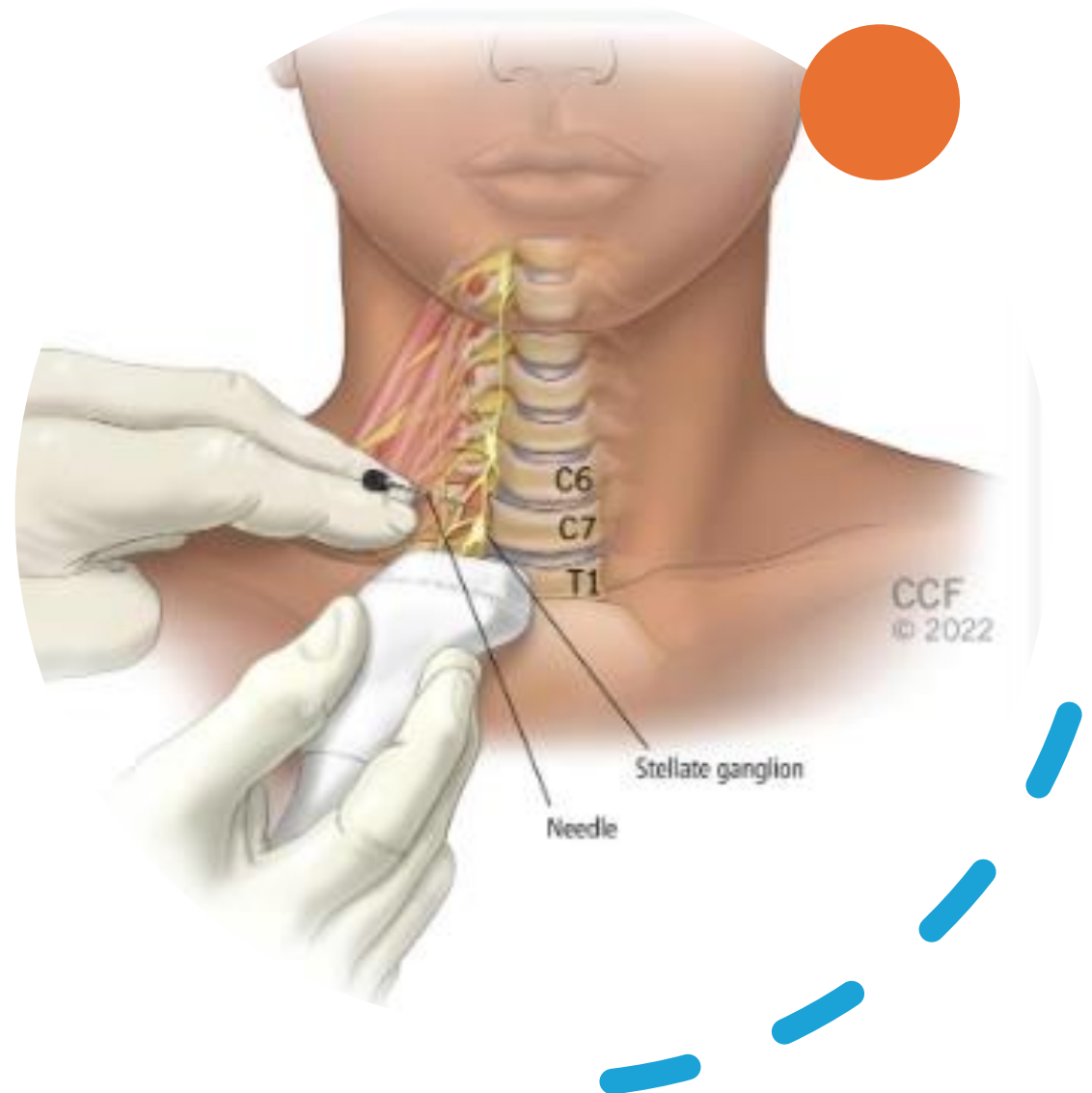
Standard RF



Cooled RF

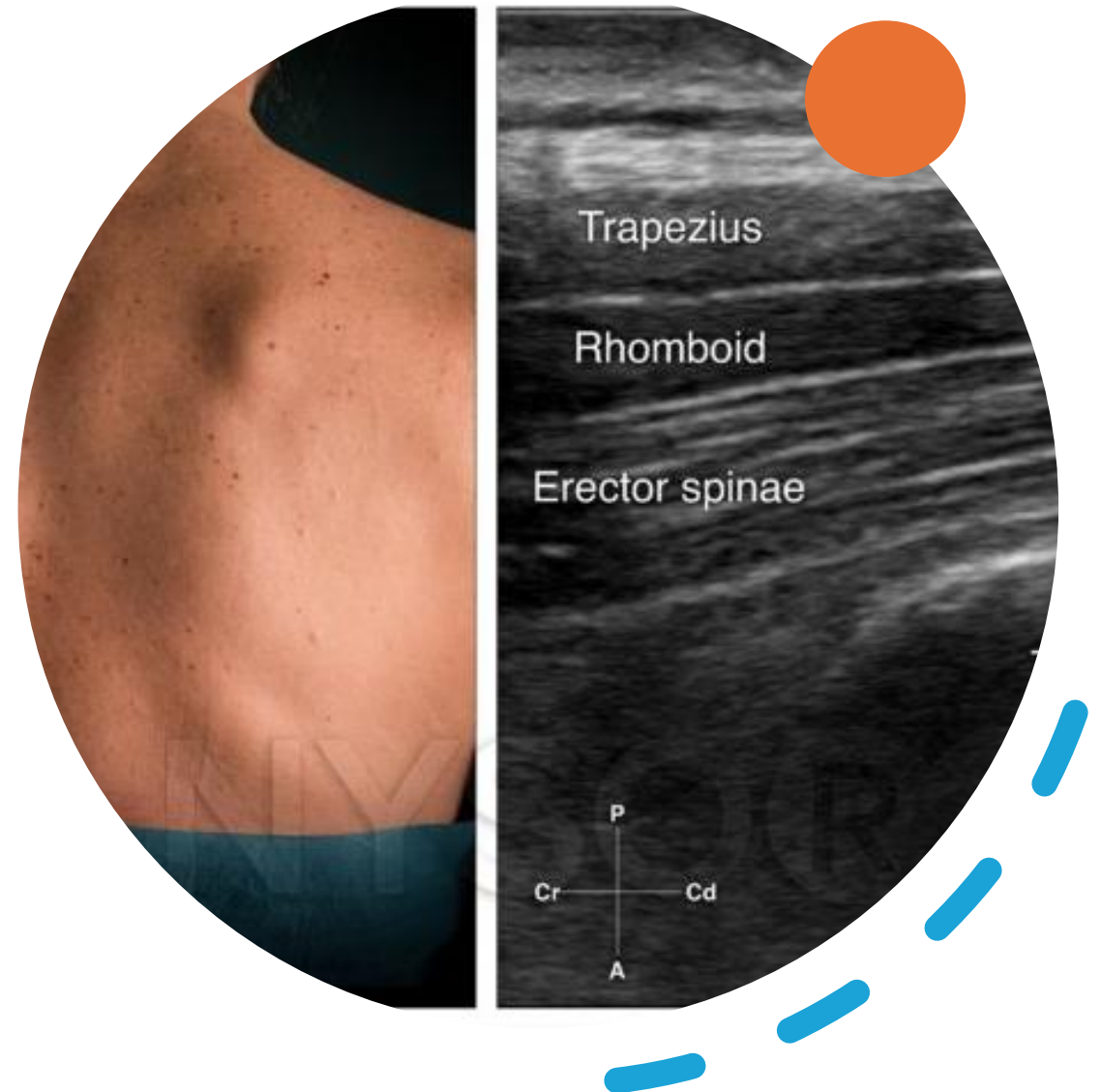
Stellate Ganglion Block

- Long COVID
- Anxiety
- PTSD
- Depression



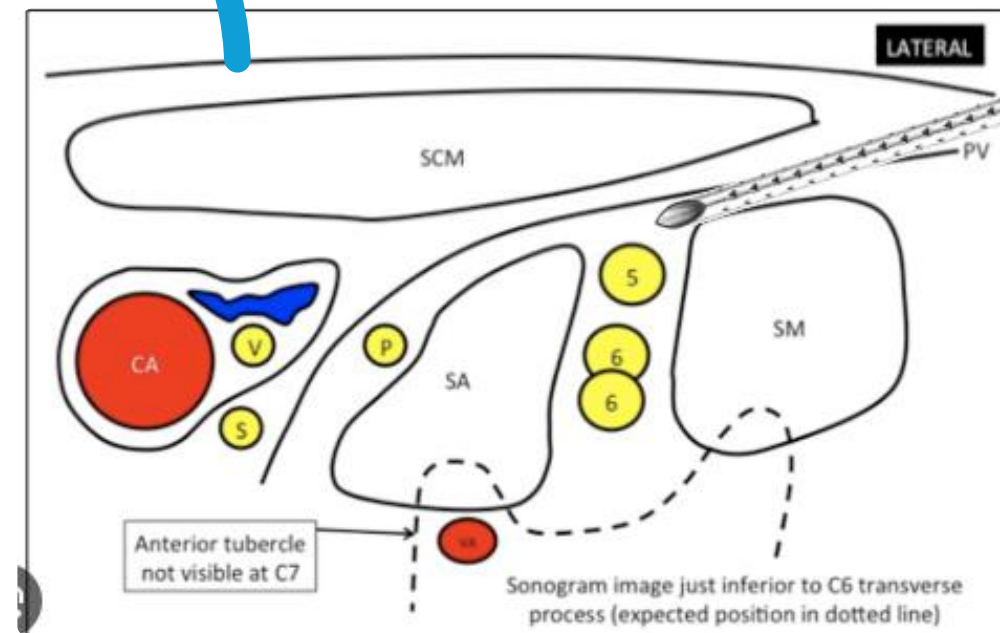
Erector Spinae Plane Nerve Block

- Thoracic cases
- Open hearts
- Thoracotomy
- Three field esophagectomy



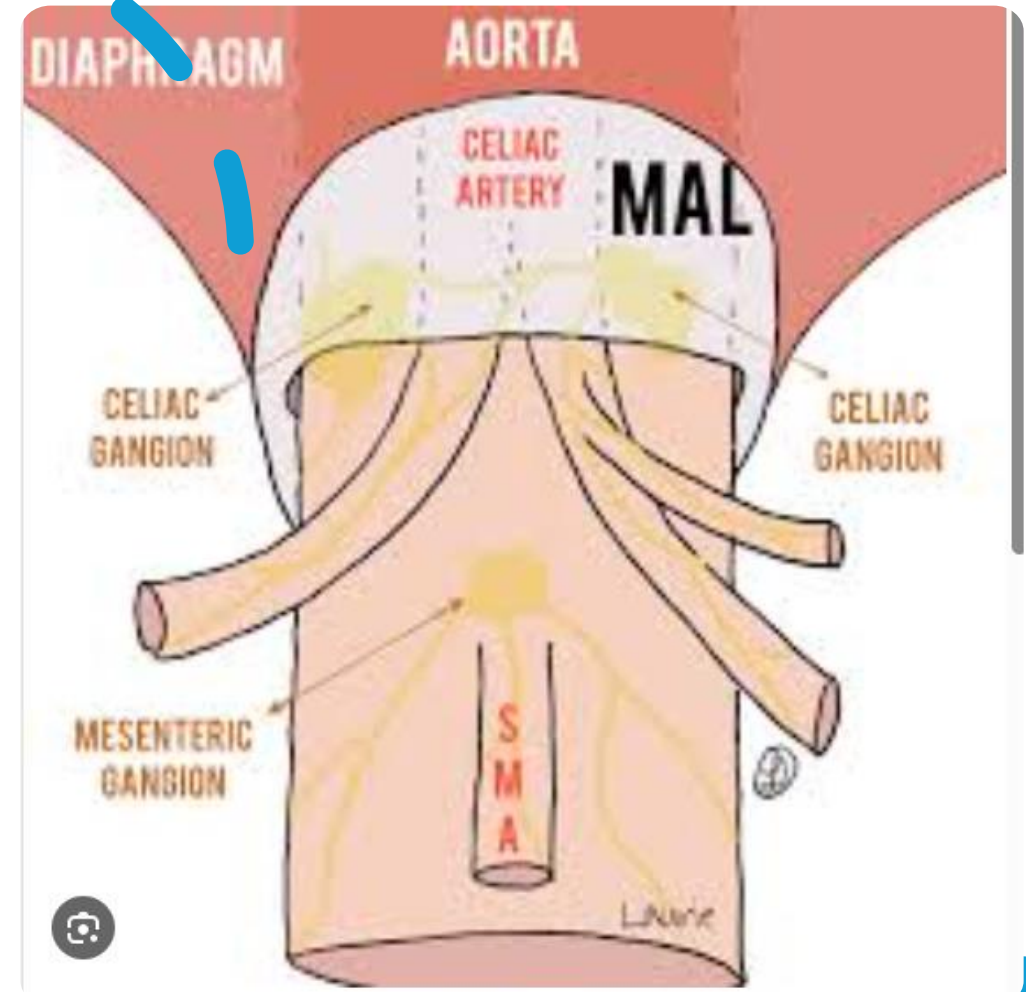
Thoracic Outlet Syndrome

- Anterior, middle and posterior scalene musculature
- Local anesthetics
- Botox



Median Arcuate Ligament Syndrome

- Hypermobility
- EDS
- Celiac plexus block
- Splanchnic block





Thank You!

Kim Mauer

mauer@ohsu.edu

kimmer1@gmail.com

503-494-7246

Cell 503-720-1100