

Naloxone: Be a Hero, Save a Life!



Naloxone is a medication designed to reverse opioid overdoses. It's like having a superhero in your first aid kit!

How Does It Work?

When someone overdoses on opioids (like certain painkillers, heroin, or fentanyl), their breathing can slow down or stop.

Naloxone works quickly to reverse these effects, helping them breathe again until medical help arrives.

How Do You Use It?

- Lay the person on their back. Tilt their head back
- Open the Naloxone box and peel back the package
- Hold the nasal spray with your thumb on the bottom of the plunger, and your first and middle fingers on either side of the nozzle.
- Do **NOT** test spray the Naloxone. They need the full dose
- Put the tip of the nozzle in 1 nostril
- Push the plunger firmly to give the entire dose
- Call 911



Scan QR code to the right for a video guide



Signs of an OPIOID OVERDOSE



**Not
breathing**



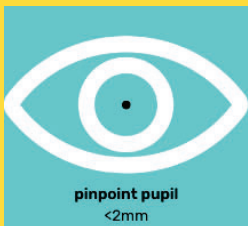
**Cannot be
woken up**



**Snoring,
gurgling, or
choking
sounds**



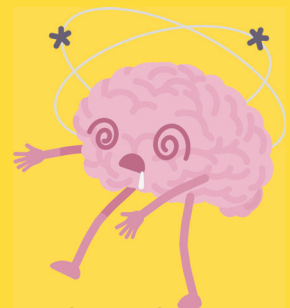
Cold skin



**Pupils are
small**



**Blue/grey
colored lips
and nails**



Dizziness