



# Oregon Hospital Trends: COVID, Flu, RSV

Edition: 12/5/2023

---

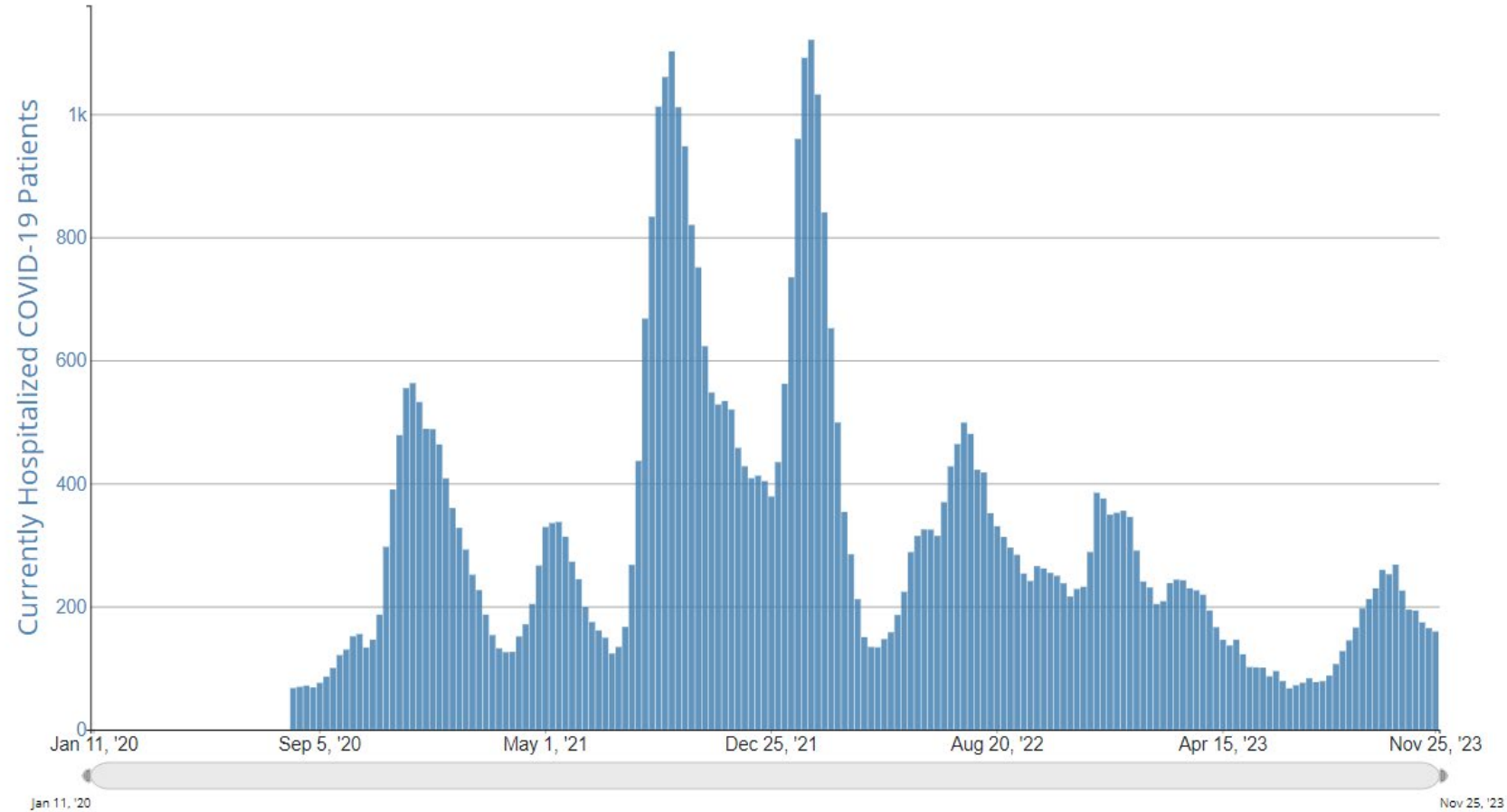
Peter Graven, PhD; Office of Advanced Analytics, BIAA, ITG

# COVID

# COVID Census in Oregon

The number of people hospitalized with COVID has declined over the last 2 months. An increase in December is expected.

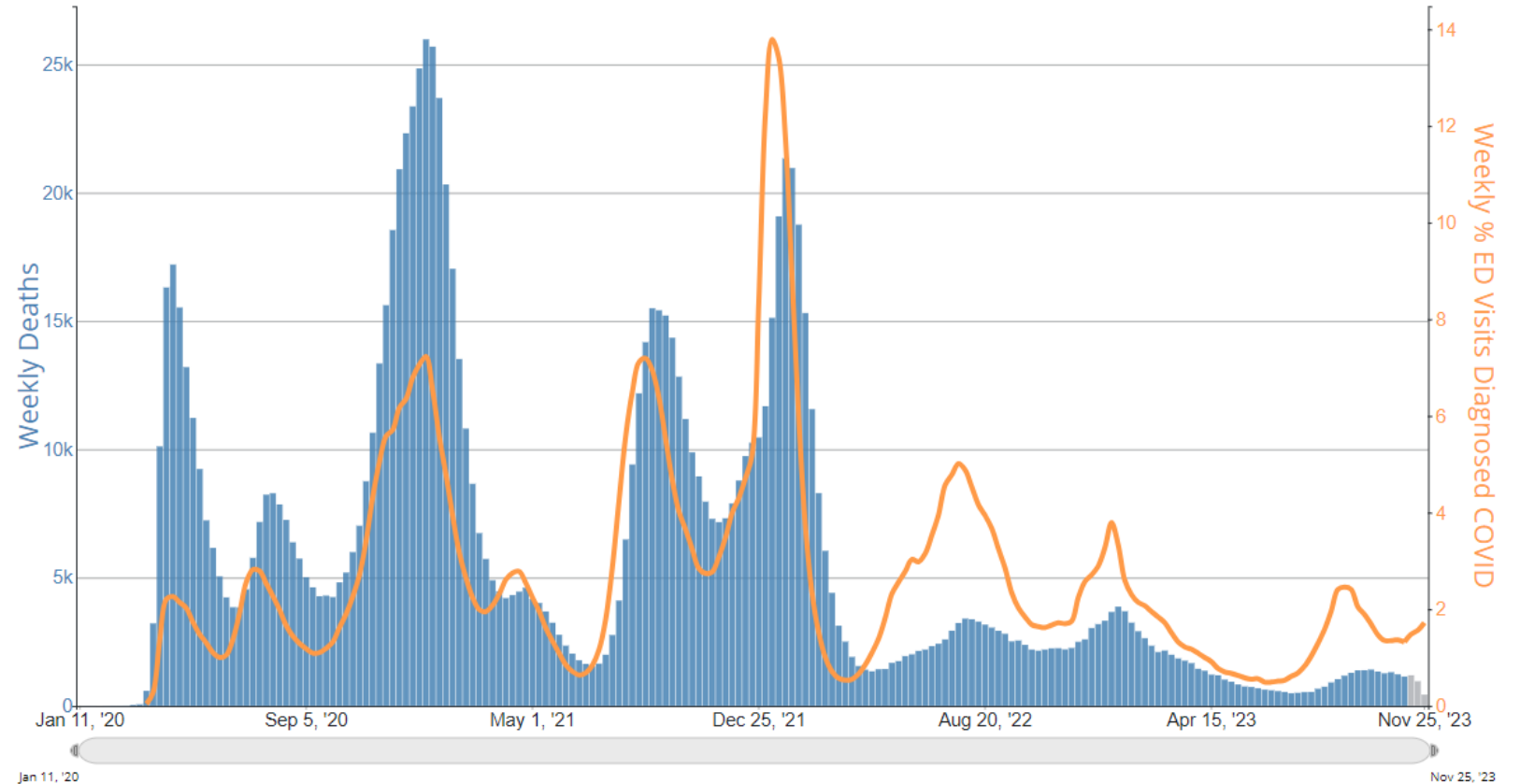
Currently Hospitalized Patients with Confirmed COVID-19, by Week, in Oregon, Reported to CDC



# COVID Metrics in US

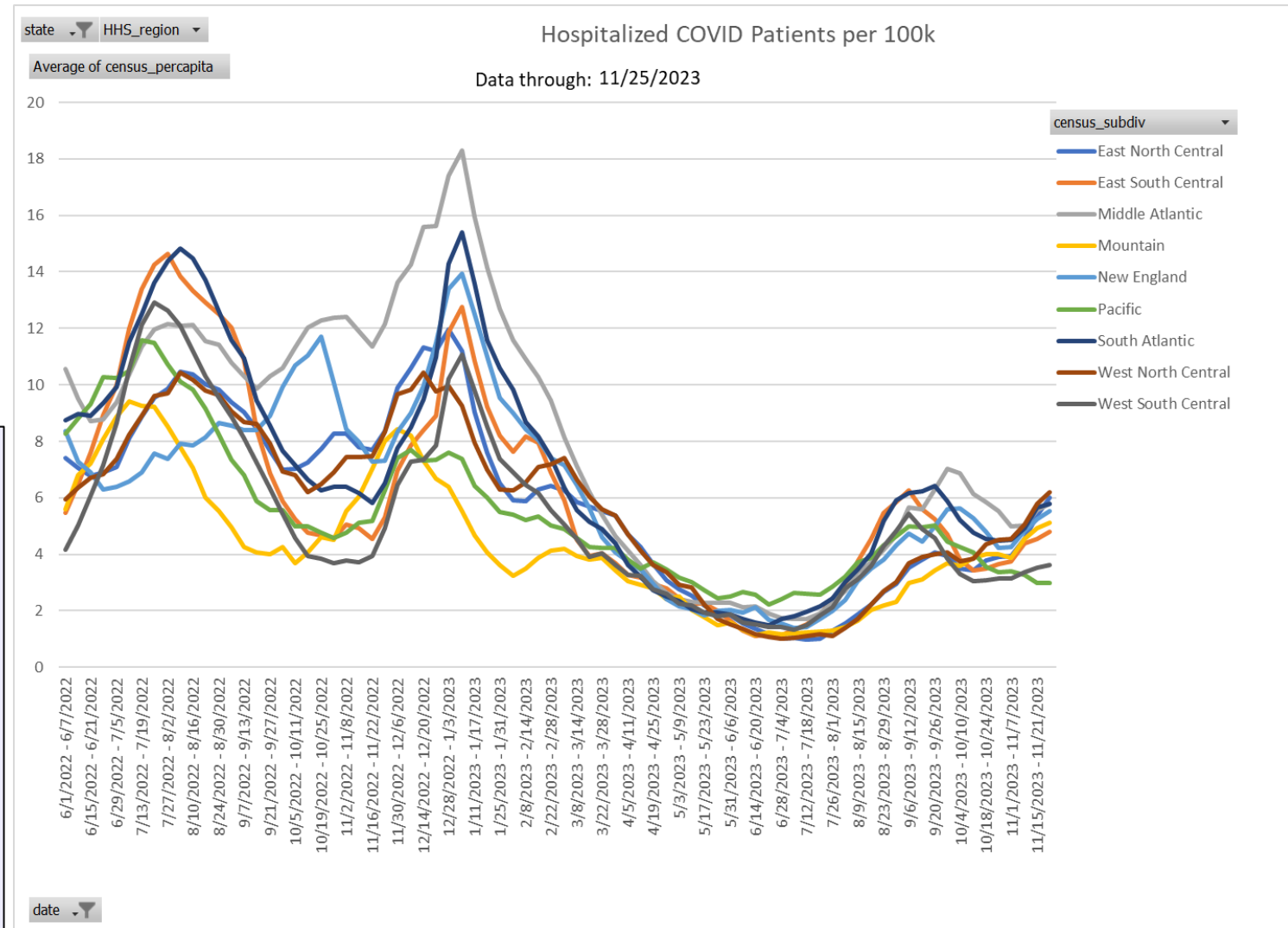
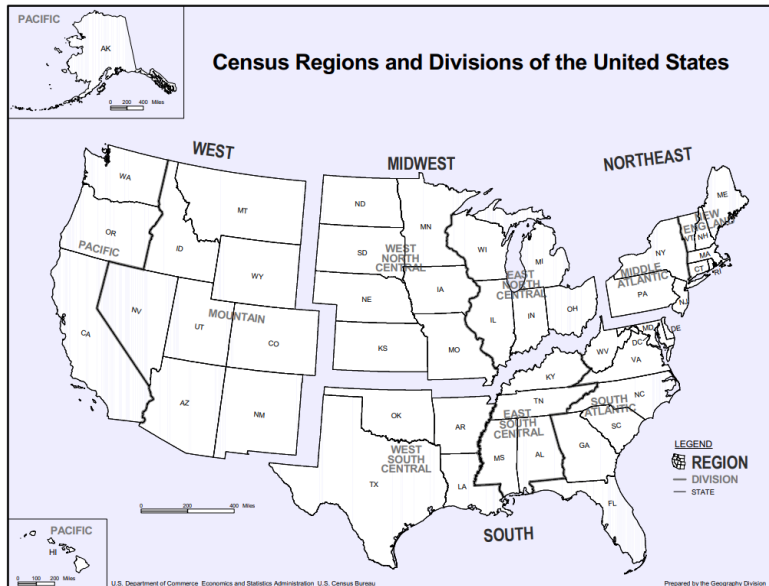
Across the US, deaths from COVID remain low but the percent of ED visits for COVID has started increasing in recent weeks.

Provisional COVID-19 Deaths and Percentage of Emergency Department (ED) Visits Diagnosed as COVID-19, by Week, in The United States, Reported to CDC



# COVID Census in US

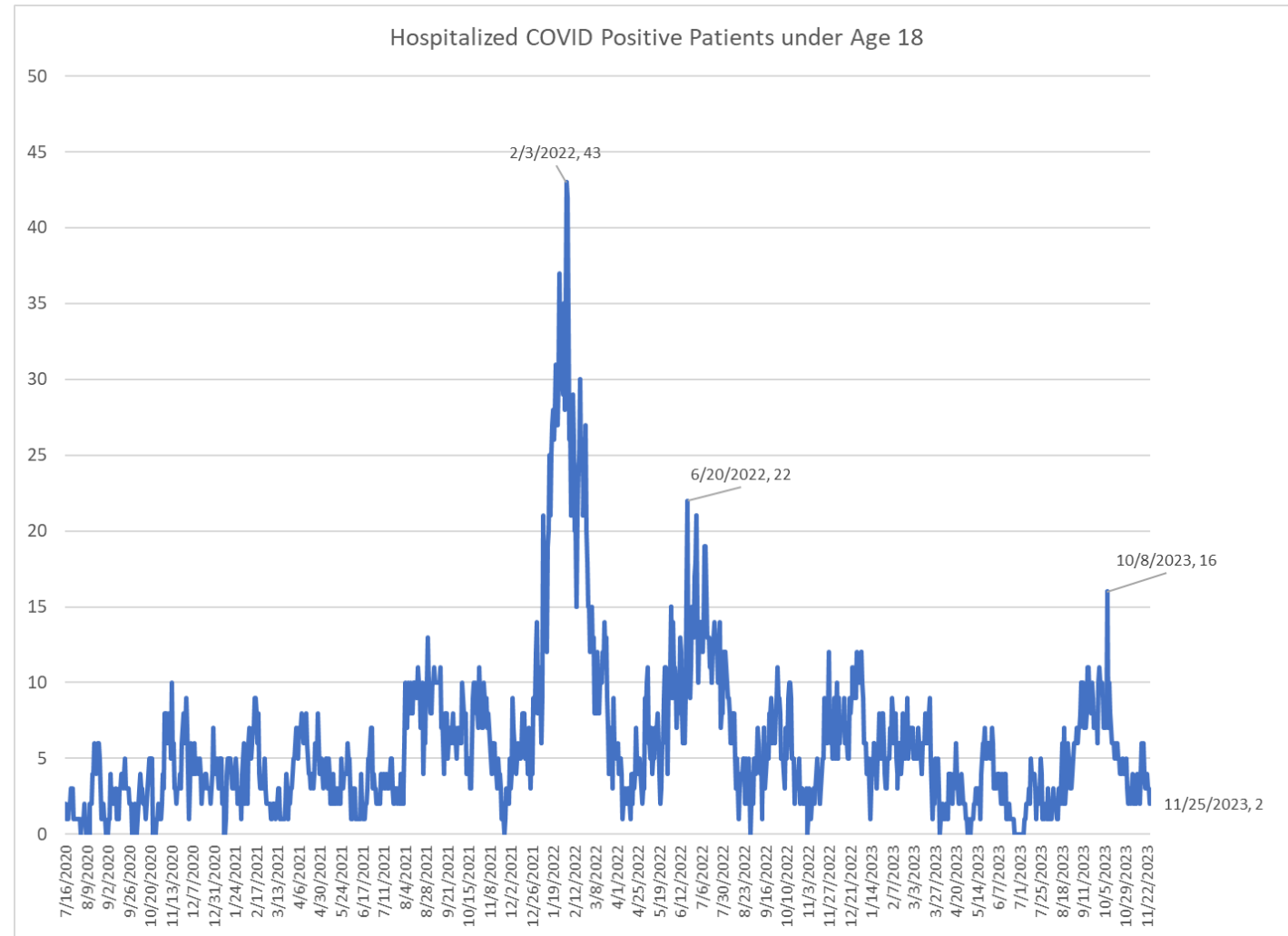
Most regions had a peak in October, declined for a couple months and have since started increasing again.





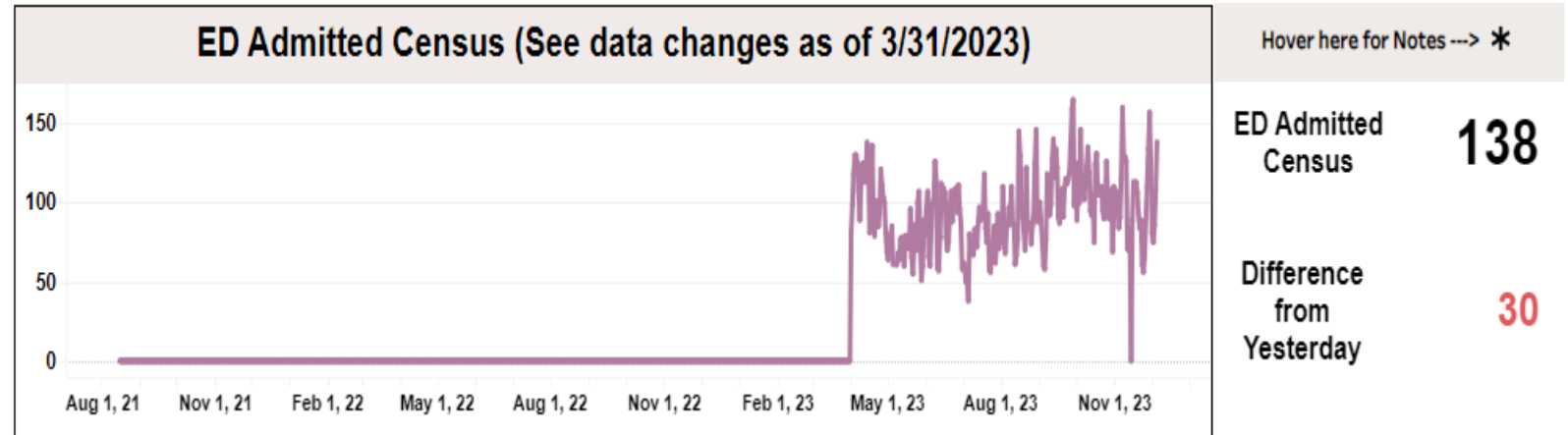
# COVID Census in Oregon Peds

The pediatric census for COVID is 10 as of 9/9/2023.



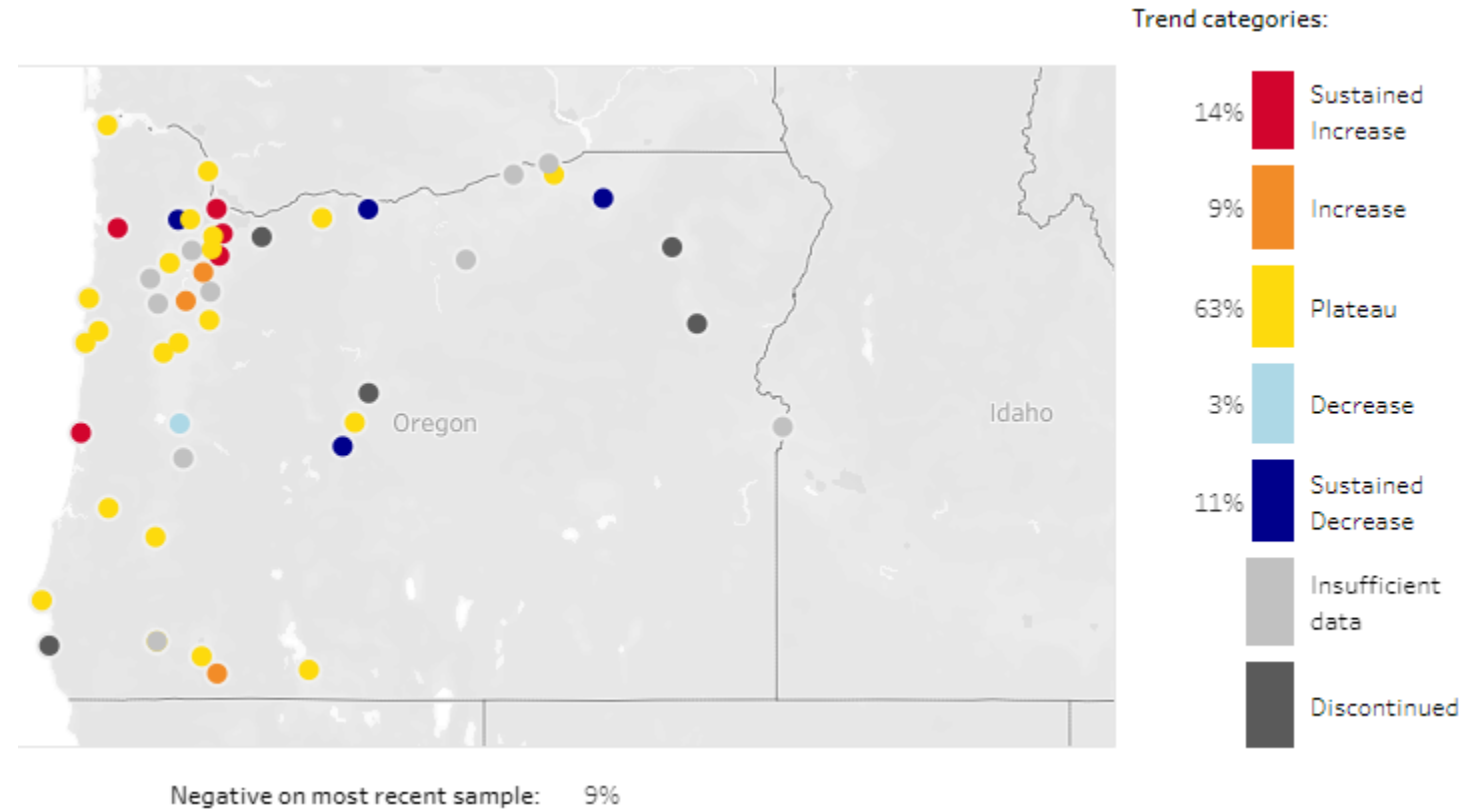
# ED Boarding in Oregon

ED boarding has increased in recent weeks.



# COVID Wastewater in Oregon

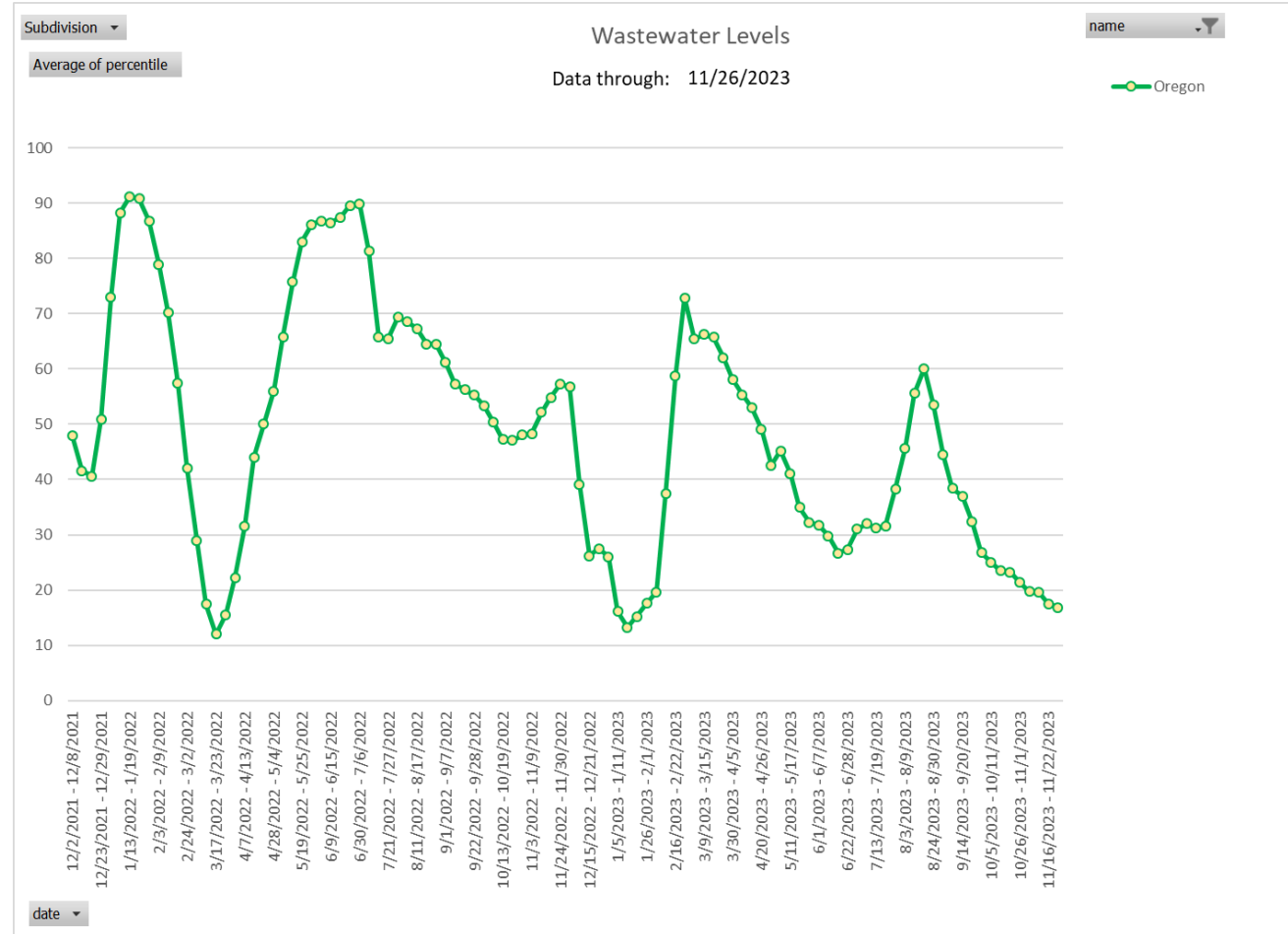
The data show an equal number of sites are experiencing sustained increases as decreases. This suggests relatively stable levels statewide.





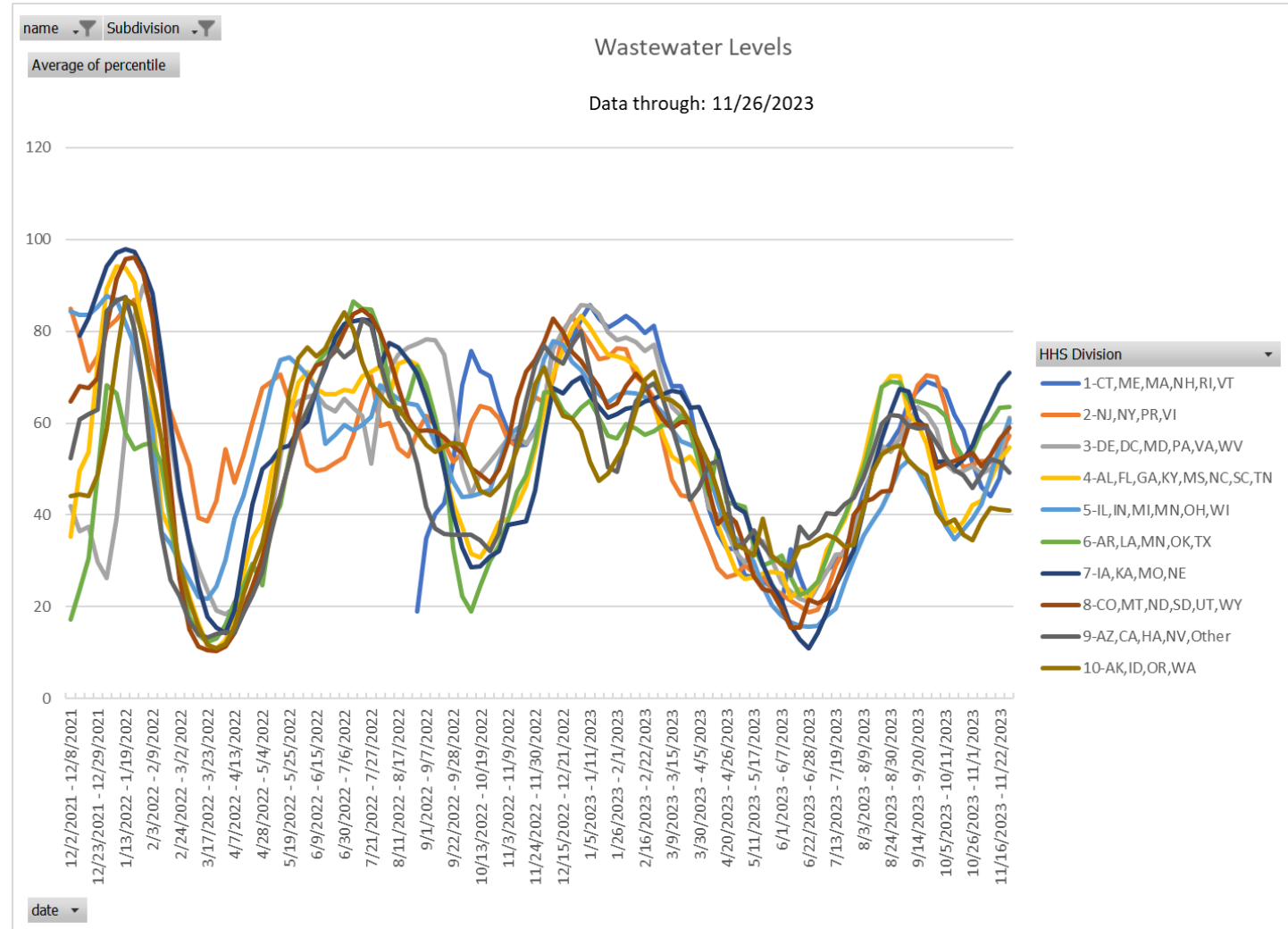
# COVID Wastewater in Oregon

The wastewater levels are generally low as of 11/26. These are expected to increase.



# COVID Wastewater in US

After a late summer wave, most regions are now showing a fall wave.

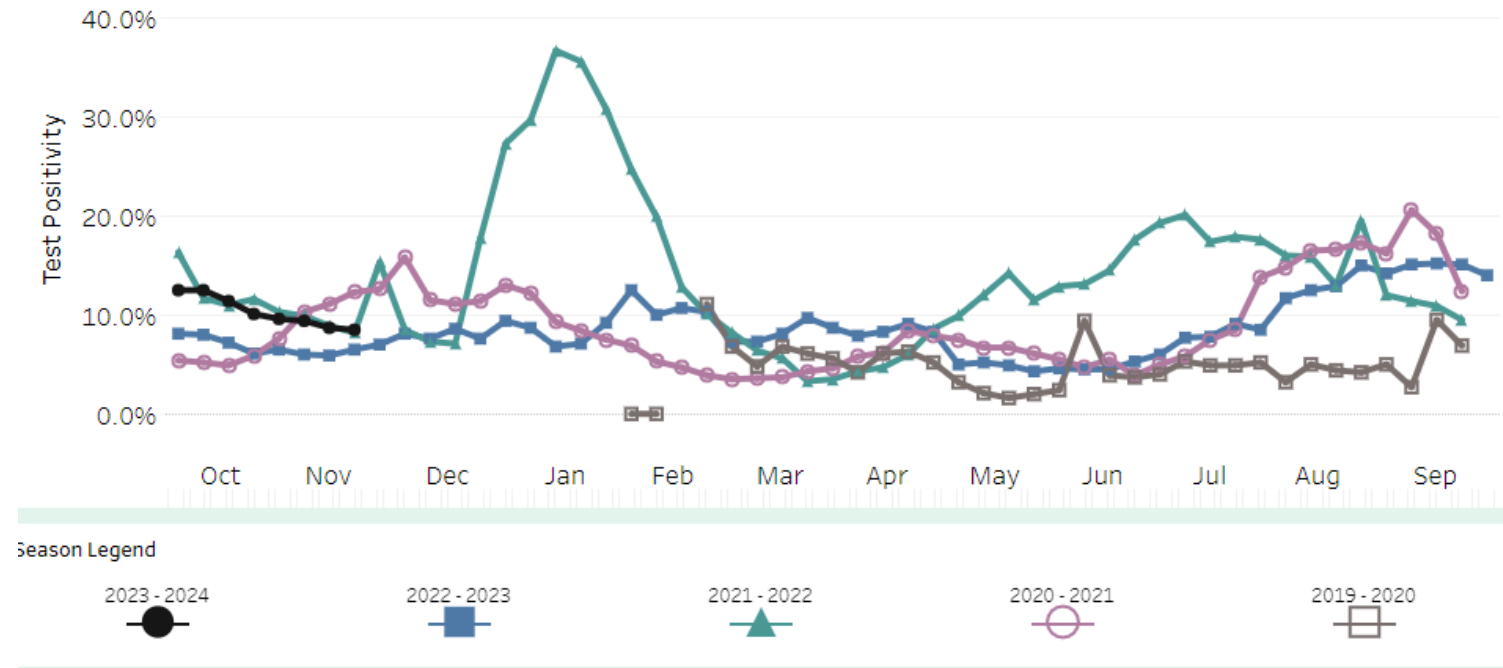


# COVID Test Positivity in Oregon

Test positivity peaked at 15.2% on week ending 9/16/2023. The level dropped to 8.5% in the most recent week ending 11/25/2023.

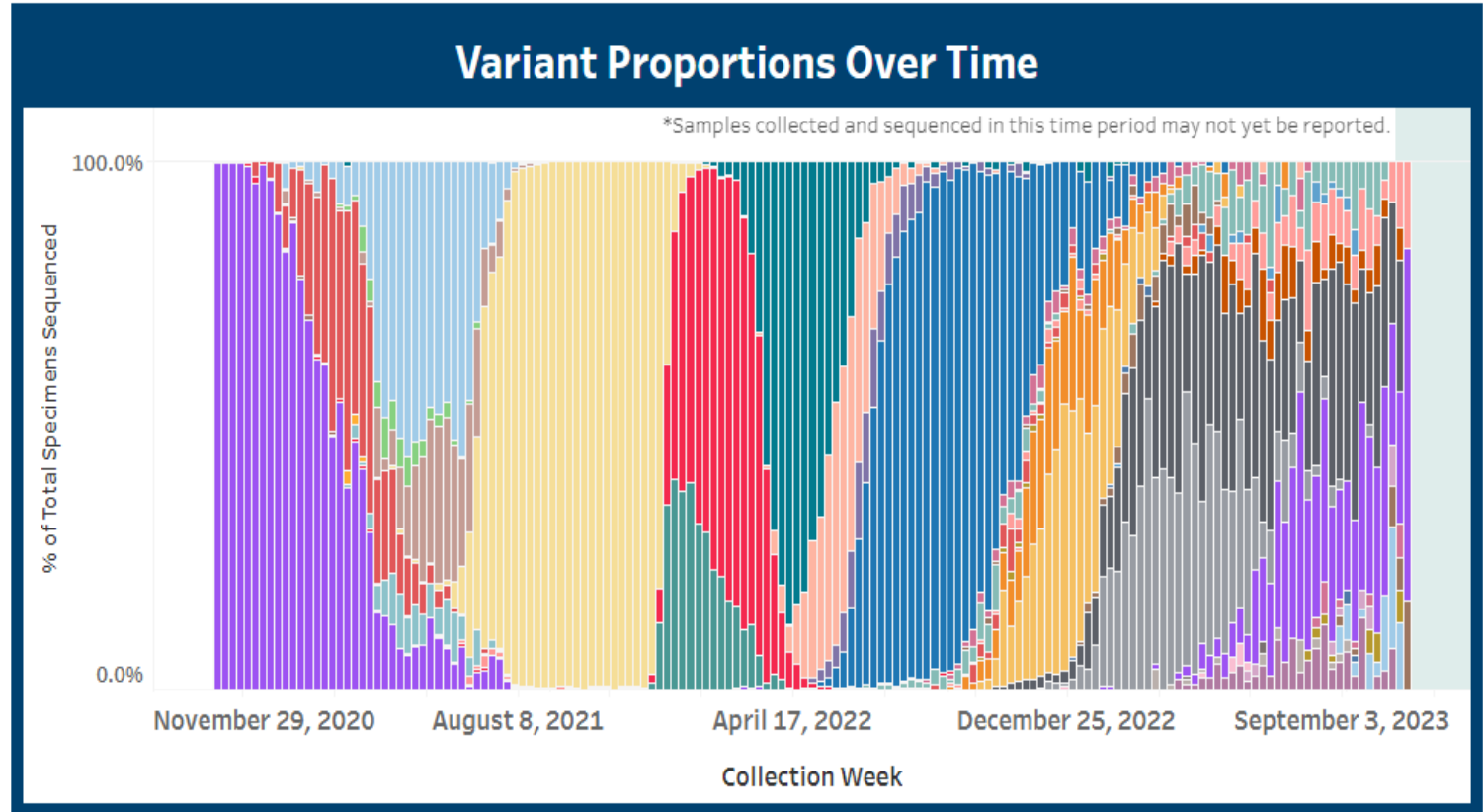
## 1. COVID-19 test positivity over time

This line chart shows the percent test positivity, the number of positive tests divided by the number of total tests, by date reported to public health. Select a point on the chart to show season and value label.



# COVID Lineage Prevalence

There is no clear variant becoming dominant at this time.



### Lineage Legend

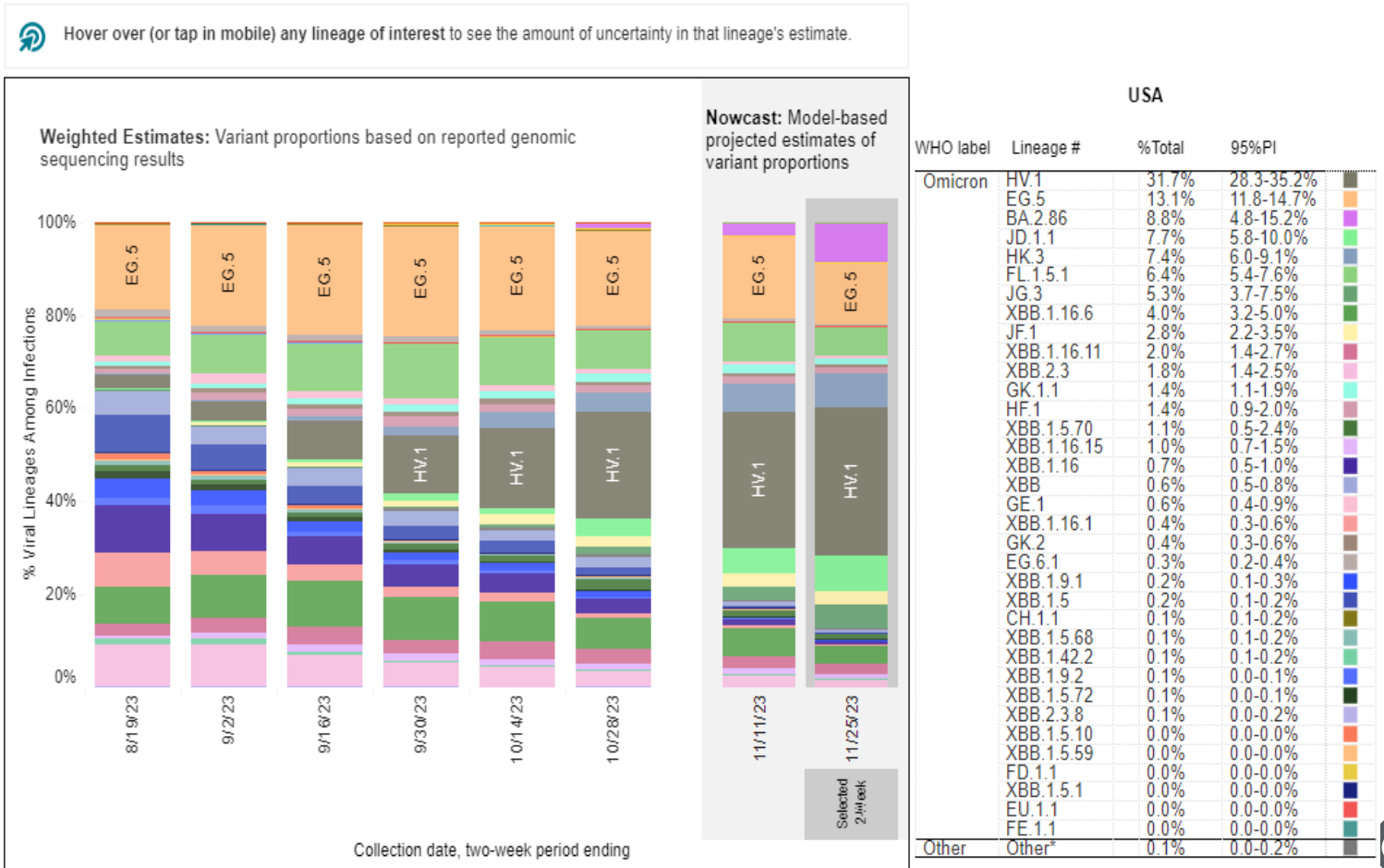
XBB.1.5	■	XBB.1.9.2	■	BA.2	■	BA.2.75.2	■
XBB	■	FD.2	■	BF.11	■	B.1.1.529	■
XBB.1.9.1	■	BQ.1	■	BF.7	■	BA.4	■
XBB.1.16	■	BQ.1.1	■	BA.5.2.6	■	BA.1.1	■
XBB.1.5.1	■	BA.5	■	BA.2.75	■	BA.2.12.1	■
XBB.2.3	■	BN.1	■	BA.4.6	■	All other variants	■

# COVID Lineage Prevalence

Nationally, the HV.1 variant is the largest but BA.2.86 is growing.

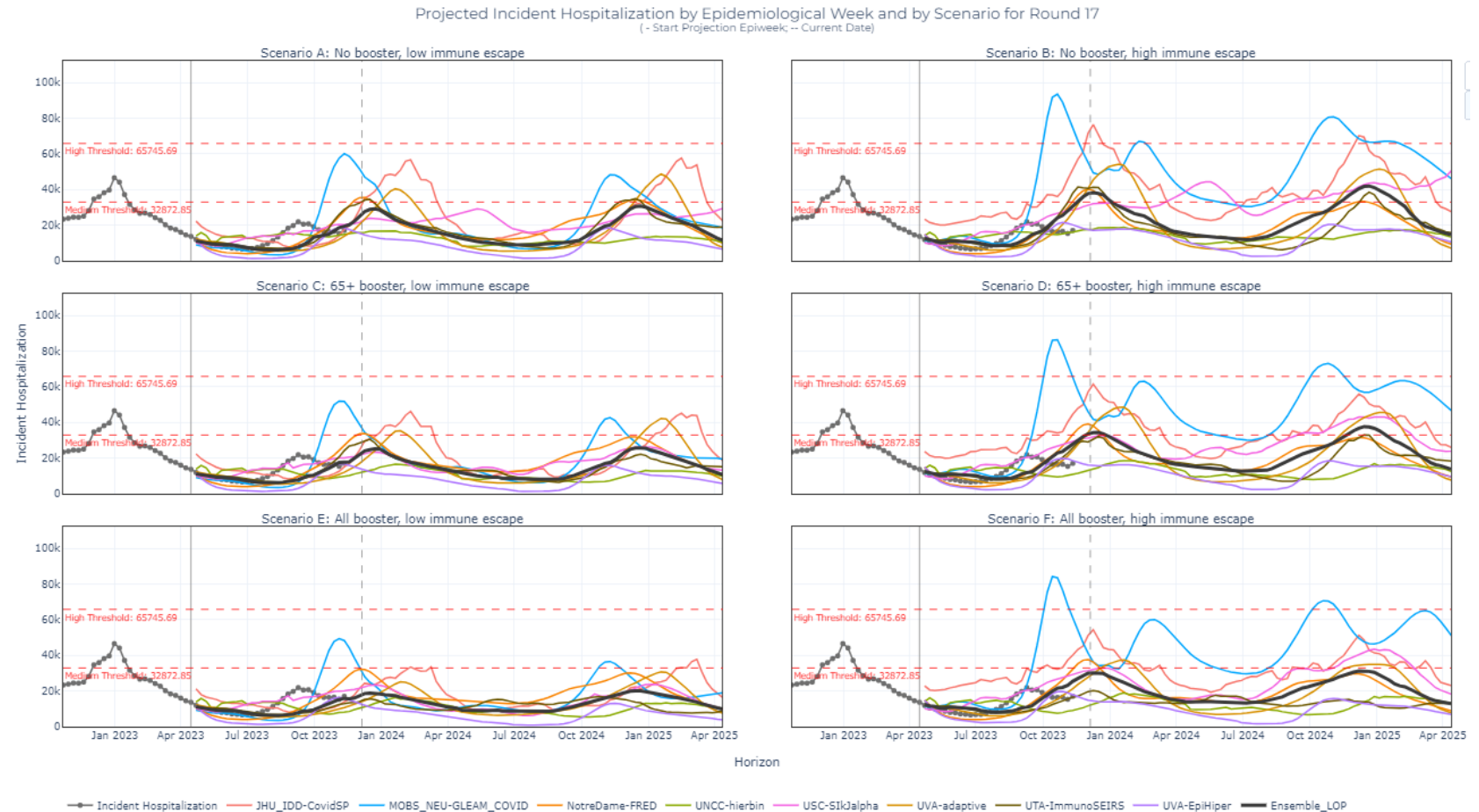
Weighted and Nowcast Estimates in United States for 2-Week Periods in 8/6/2023 – 11/25/2023

Nowcast Estimates in United States for 11/12/2023 – 11/25/2023



# COVID Scenario Modeling HUB- Oregon

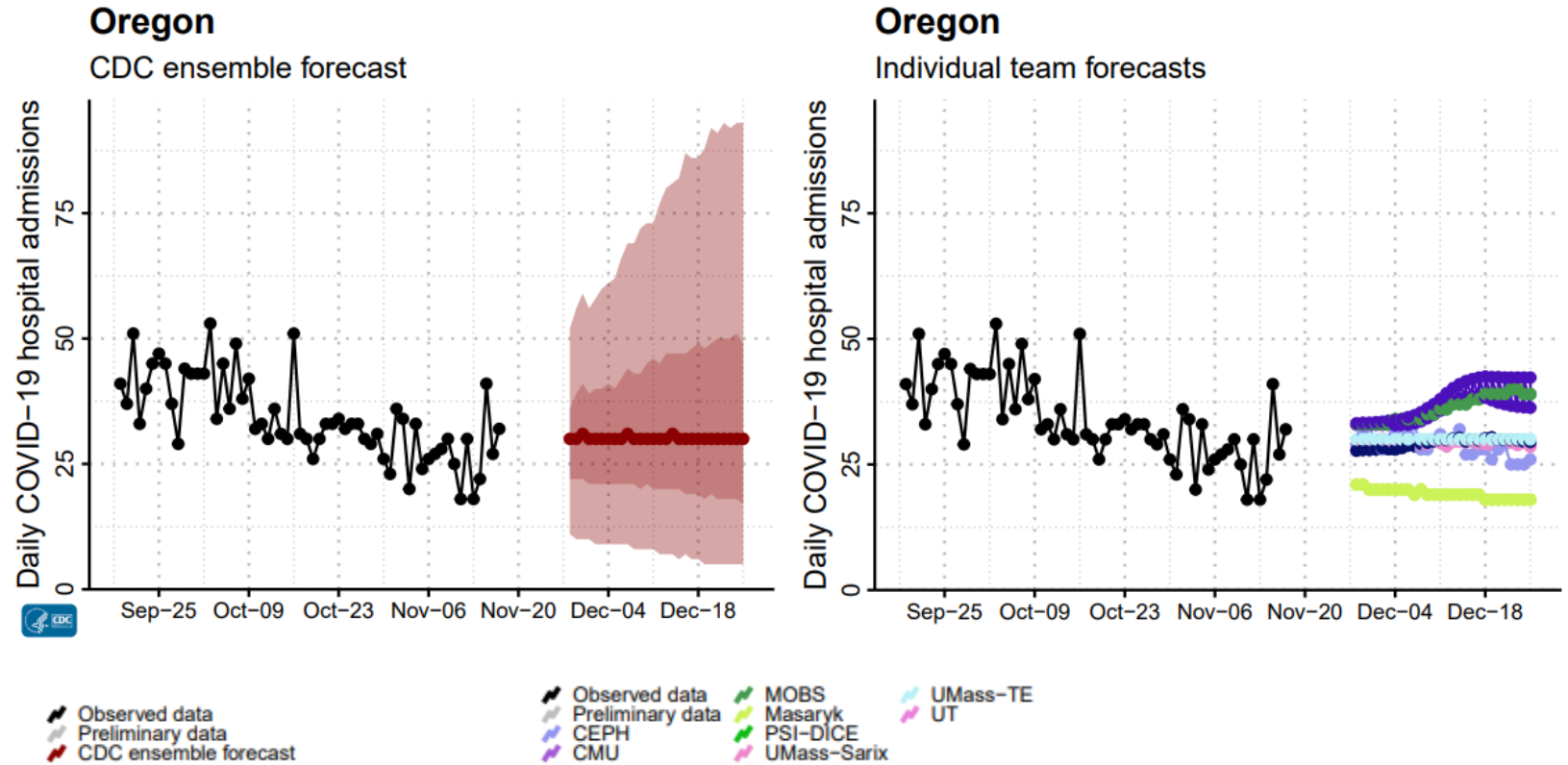
Round 17 forecasts did not predict the late summer wave but most models are showing potential for fall/winter wave.





# CDC COVID Hospitalization- Oregon Forecast

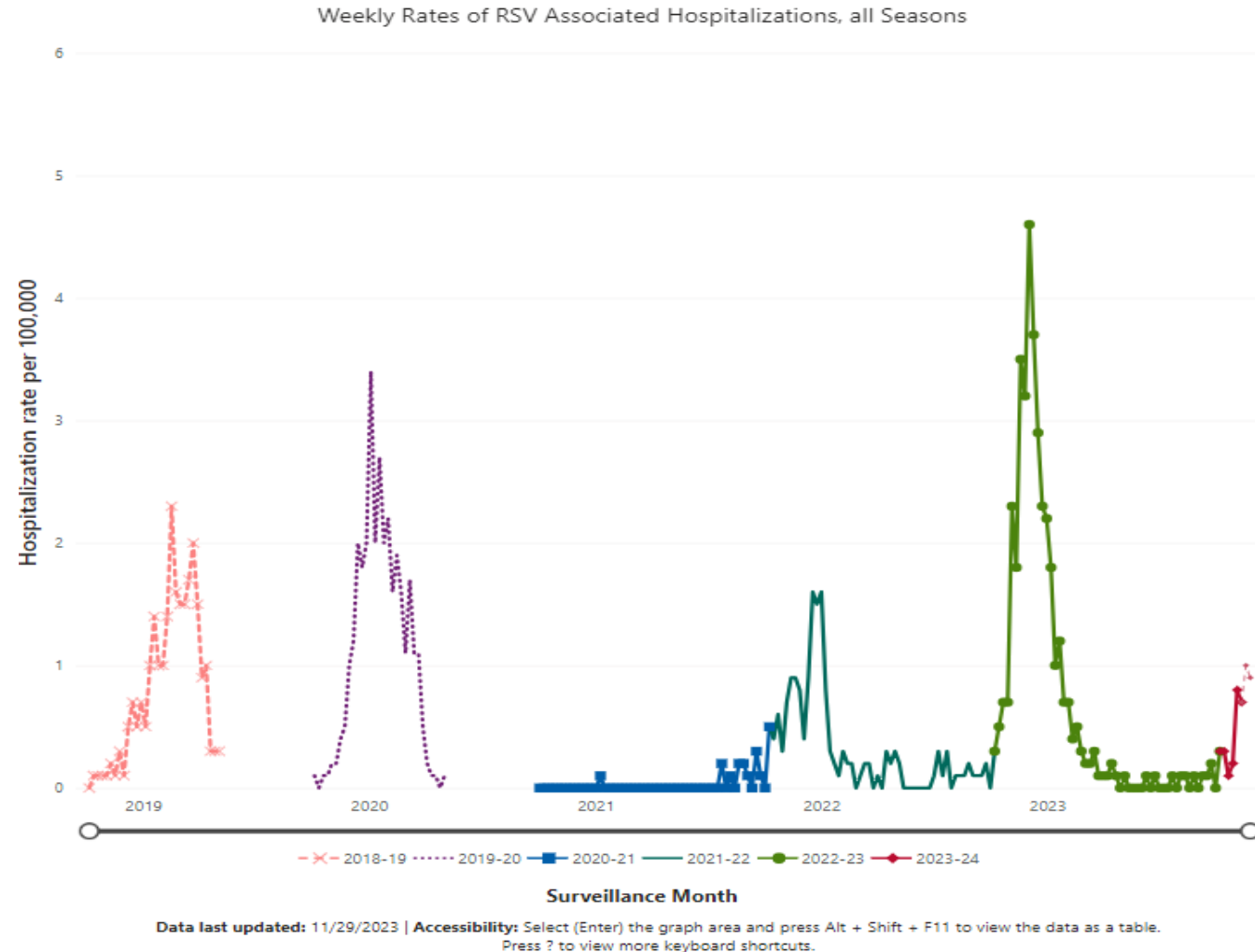
The short term forecasts are mostly flat.



# RSV

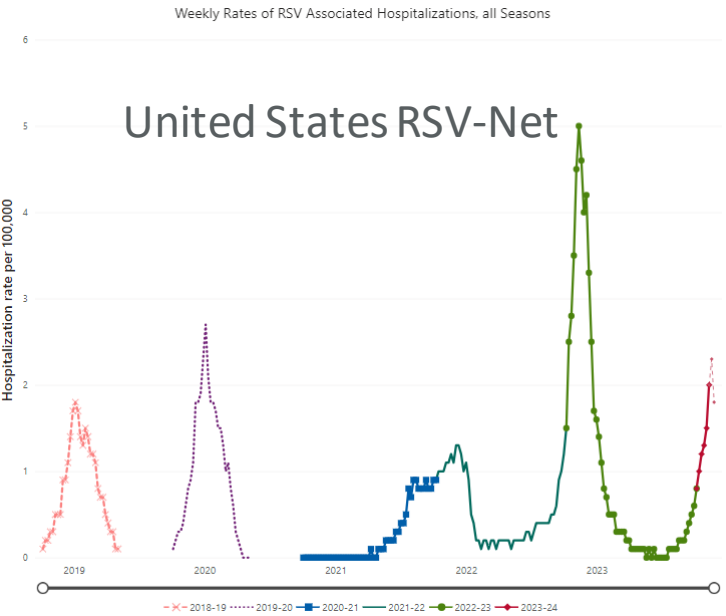
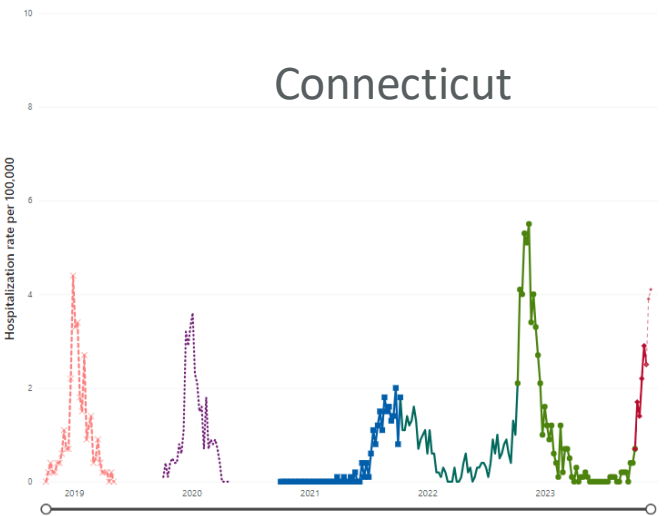
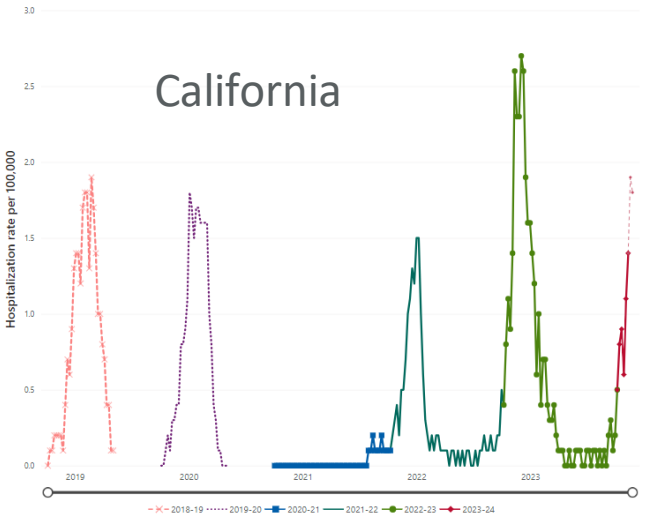
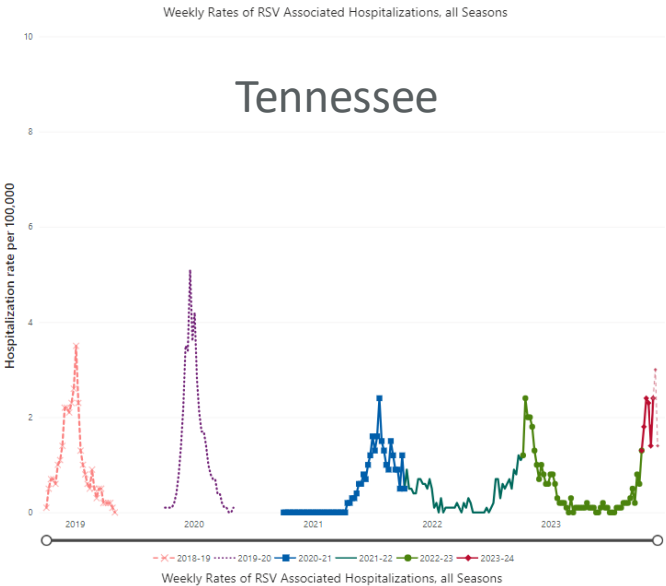
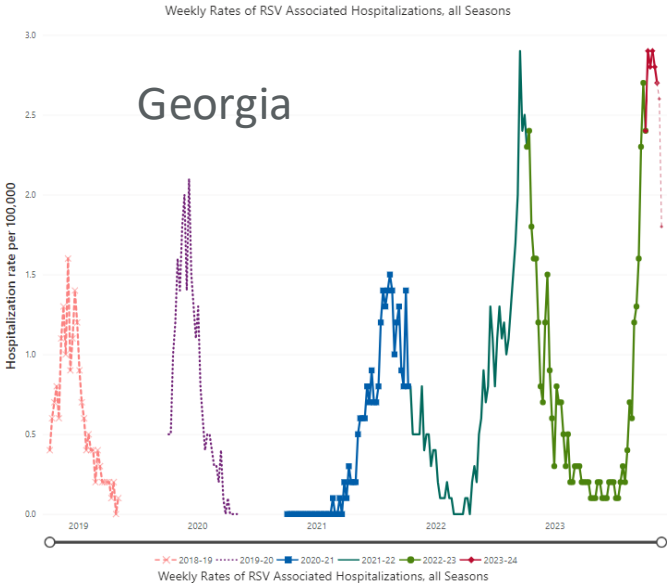
# RSV-Oregon

RSV has started increasing in Oregon. The levels are expected to spike in the next month.



# RSV-Other States

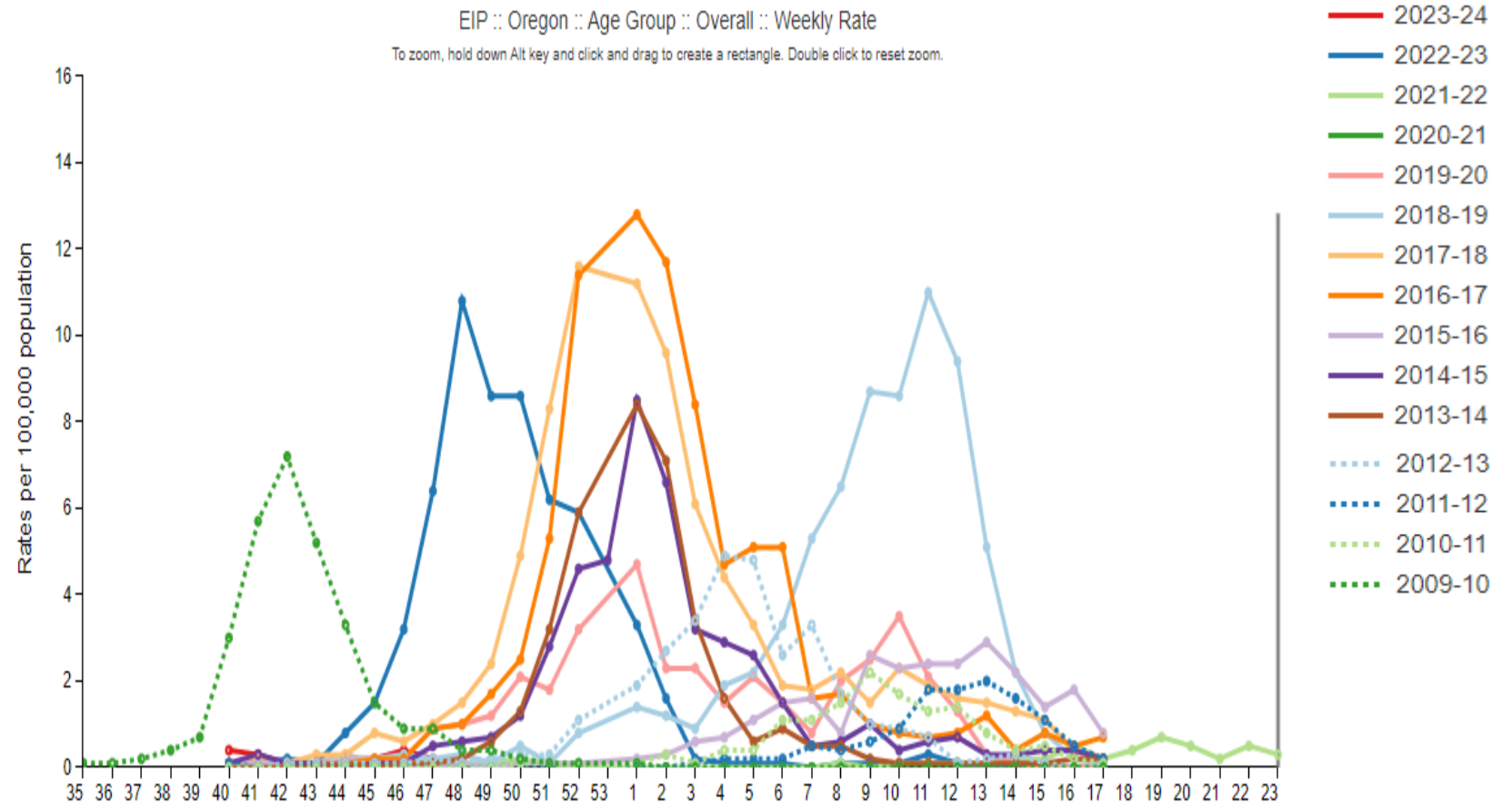
Several states are showing peaks in line with last year



# Flu

# Influenza-Oregon

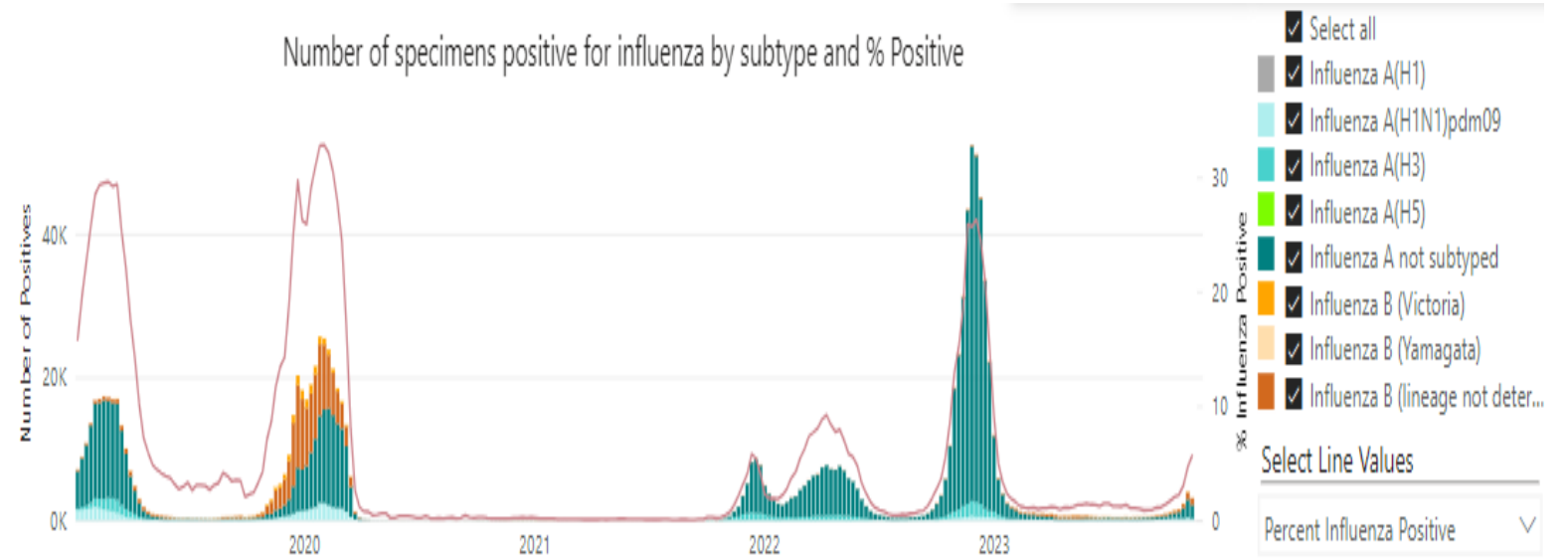
Flu hospitalization levels have not begun increasing this season.





# Flu Type Prevalence

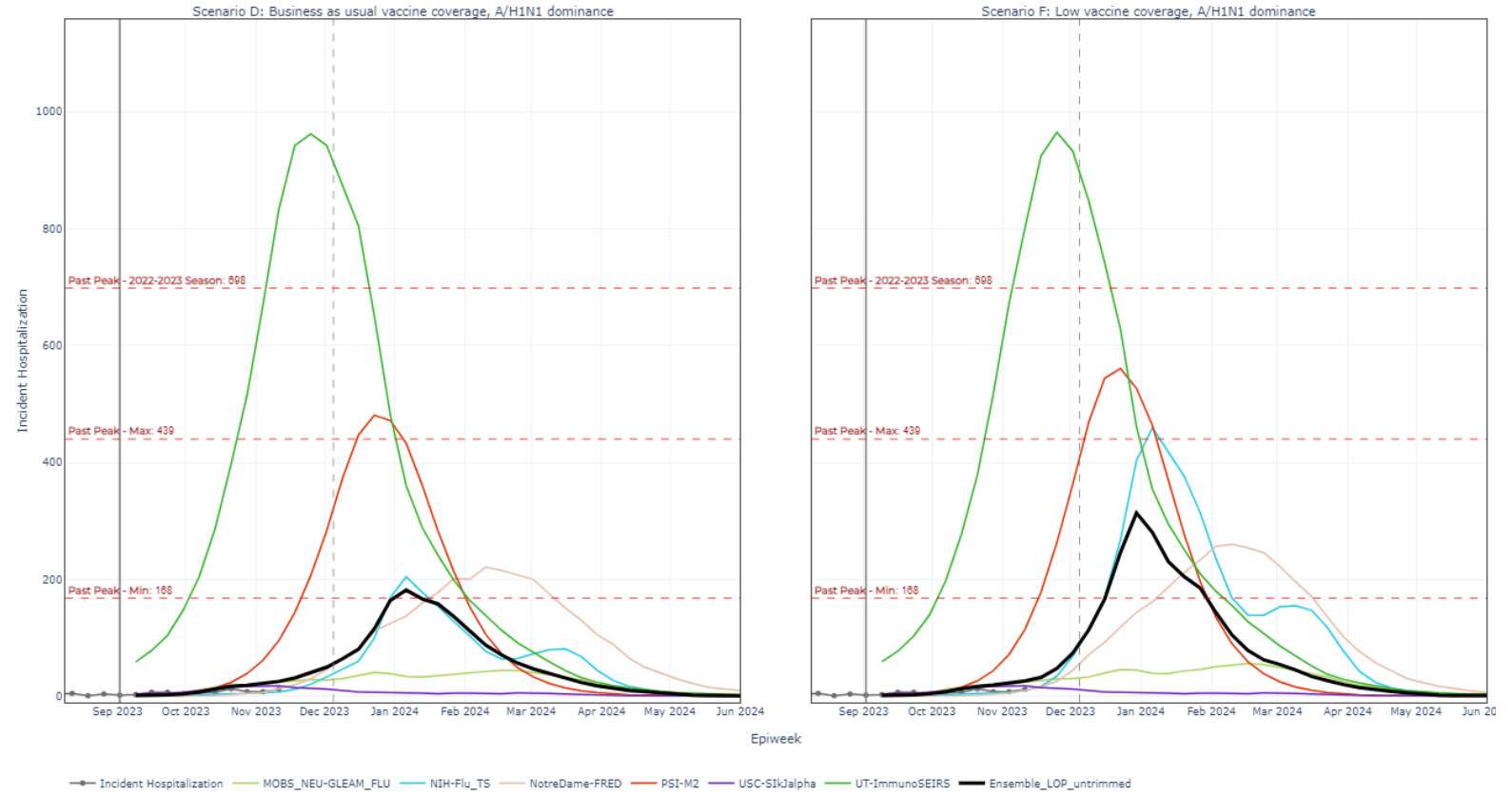
Some increase in the US is observed.



# Influenza-Oregon Forecast

Two specific scenarios are shown. The ensemble (black) line shows peaks in January that are potentially lower than last year.

Projected Incident Hospitalization by Epidemiological Week and by Scenario for Round 1 - 2023/2024  
(- Start Projection Epiweek; -- Current Date)



# Acknowledgments

Each week this model requires updates, input and expertise from many people.

Thank you to Guang Fan, Xuan Qin and Brian O’Roak, at OHSU, for their work to monitor variants in Oregon.

Thank you to Dr. William Messer and Dr. Marcel Curlin for their expertise in virus dynamics and transmissions.

Thank you!