



Explore effective mentorship at the intersection of critical race theory, equity and responsive mentoring practices.

Questions?
mentorship@ohsu.edu

Culturally Aware Mentorship Series

This three-part series is hosted by the Office of Educational Improvement and Innovation, Mentorship and Career Design, Knight Cancer Gender Equity Group, Department of Cell, Developmental and Cancer Biology and CEDAR. Additional partner: SOM Faculty Development. All are welcome.

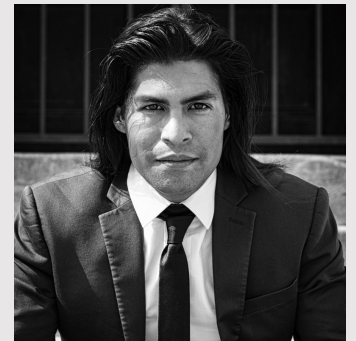
Mentoring with Empathy

At this Faculty Development Fridays session, we will view the National Center for Faculty Development and Diversity webinar, *Teaching with Empathy and for Equity at the Graduate Level*, which discusses how faculty can effectively, efficiently, and inclusively advise, mentor, teach, and support their graduate students. Brenda Martinez, Ph.D., mentorship specialist, will facilitate. **Advance registration required.**

Friday, April 21, noon-1:30 p.m., Webex | [Add to calendar](#)

Critical Mentorship: How CRT can inform our Mentorship Approaches

Jose H. Vargas, Ph.D., will explore how critical race theory and anti-racism can help reframe effective mentorship practices. Dr. Vargas is a critical social psychologist, theorist and methodologist at California State University, Northridge. He is also a consultant with expertise in critical social research, antiracism, and ecosystemic approaches. He earned his doctorate degree from the University of Nevada, Reno. His latest research focuses on the reproduction of inequitable and discriminatory ecosystems, especially in the context of education.



Tuesday, May 9, 1-2:30 p.m., WebEx | [Add to calendar](#)

Critical Mentorship Journal Club

Join us for a lunch conversation on a theoretical and critical analysis of race-dysconscious mentorship involving students of color and white faculty. Tova Johnson, critical pedagogy and research librarian, and Brenda Martinez, mentorship specialist, will co-facilitate a [journal article discussion](#) on “critical” alternatives to traditional research mentorship post Dr. Vargas’ talk. Lunch will be provided for in-person participants. **Advance registration required.** To RSVP, email: mentorship@ohsu.edu.

Friday, May 26, noon-1 p.m., KCRB 6111/6120 and Webex
[Add to calendar](#)

