



School of
MEDICINE

BELONG | INCLUDE | EMPOWER

School of Medicine's "Belong, Include, Empower" - March 2023

Dear OHSU School of Medicine Community:

Welcome to our March edition! We recognize and honor [Women's History Month](#), [National Developmental Disabilities Awareness Month](#), [Greek American Heritage Month](#) and [Irish American Heritage Month](#). We also pay tribute to the memory of Cesar Chavez who fought for civil rights.

We invite you to join in our shared commitment to drive meaningful action by learning, sharing, and participating in the below DEI events and webinars, to guide, inspire, and build inclusion.

The SoM Strategic DEI and AR Plan aims to take action to advance a welcoming and thriving culture that recognizes the value of all individuals of all backgrounds, skills, experiences, and perspectives.

Sincerely,

Leslie Garcia, M.P.A., Ed.D.

Associate Dean for Diversity, Equity, & Inclusion
OHSU School of Medicine

More than 150 pre-med mentees are paired with mentors!



March Observances

[LGBT Health Awareness Week](#)

LGBT Americans continue to experience health disparities and are more likely than other Americans to be uninsured or underinsured.

[National Nutrition Month](#)

Access to nutritious food is a key social determinant of health that has a direct impact on a person's well-being.

[Developmental Disabilities Awareness Month](#)

Raise awareness about the inclusion of people with developmental disabilities and the barriers that they still face in connecting with the communities in which they live.

[March 1 | Zero Discrimination Day](#)

Uphold the principle of zero discrimination which is based on the belief that everyone should be treated equally and with respect - in health care too. Recommended read: ["Zero Discrimination Day: What can Medical Publications Do?"](#)

[March 8 | International Women's Day](#)

This global day of recognition celebrates women's achievements, raises awareness about discrimination and violence, and brings attention to issues of reproductive rights and equality.

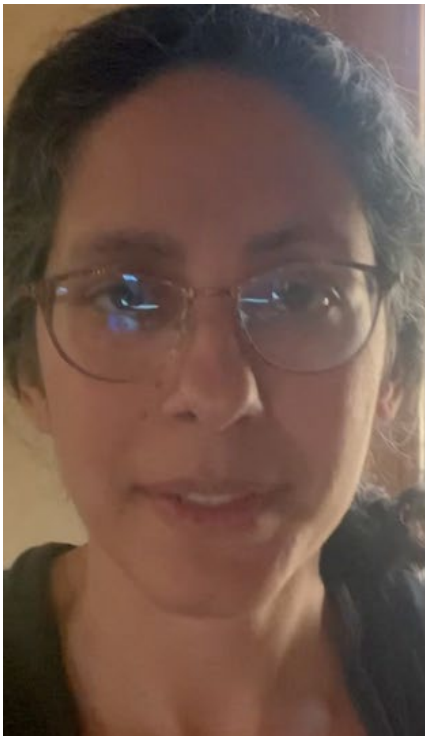
[March 31 | Cesar Chavez Remembrance Day](#)

Chavez became a prominent leader championing farm worker's rights, civil liberties, and medical coverage and pension benefits. He inspired millions of people to commit themselves to social, economic, and civil rights activism.

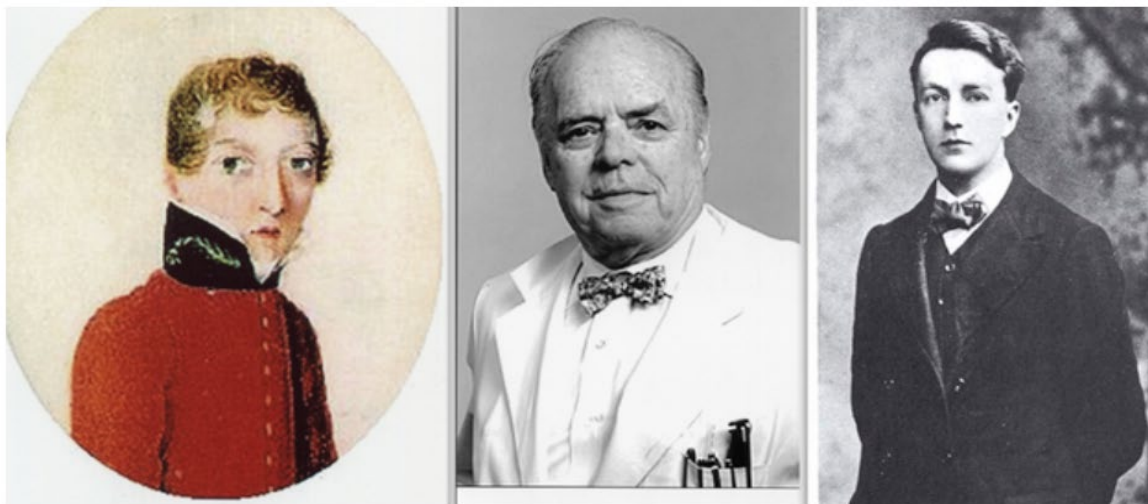
[March 31 | International Transgender Day of Visibility](#)

Celebrate the contributions of transgender and gender-non-binary people.

OHSU School of Medicine celebrates Women's History Month



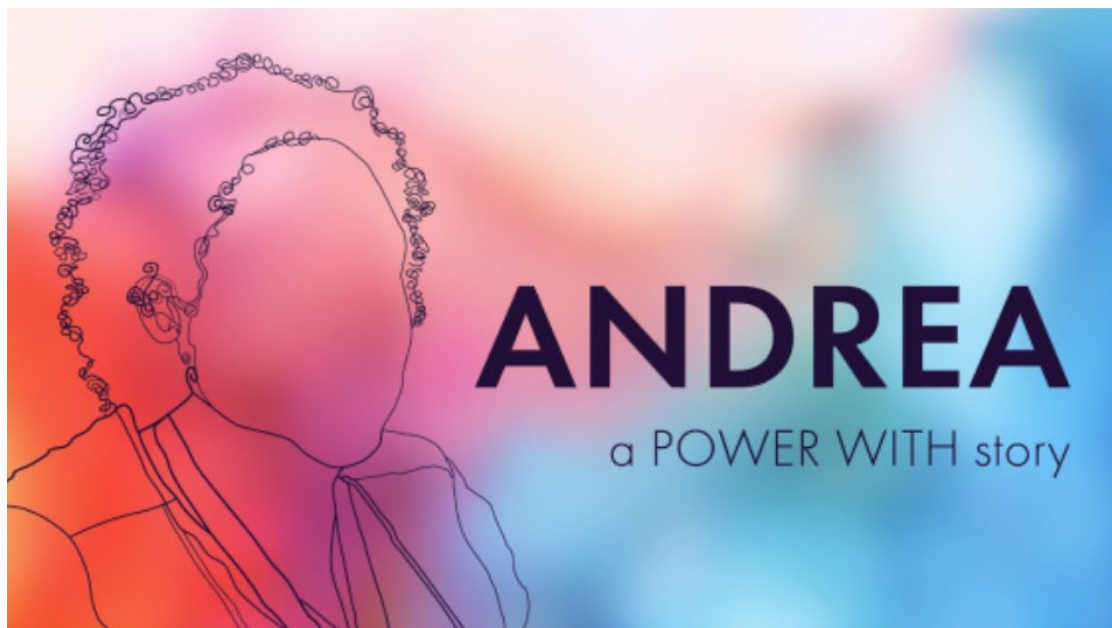
Irish American Heritage Month



[Read the stories](#) of some of the most important Irish and Irish Americans in the history of medicine, including the remarkable story of Dr. James Barry, an Irish military surgeon in the British Army.

Congress designated March as Irish-American Heritage Month in 1991 and every year the President of the U.S. issues a proclamation commemorating the occasion. Originally a religious holiday to honor St. Patrick, who introduced Christianity to Ireland in the 5th century, St. Patrick's Day has evolved into a celebration of all things Irish.

OHSU storytelling project sparks health care equity



Enrichment

All events are listed in Pacific Time, even those hosted in other time zones.

[Thursday, March 2, 1 p.m. | Community Connection Public Health Updates](#)

Join Dr. Kurt Freeman, director of Institute on Development and Disability at OHSU. The session is hosted by the Equity Office staff within the Public health Division of Oregon Health Authority. Registration in [English](#) and [Spanish](#).

[Thursday-Friday, March 2-3 | Impacts of Healthcare Algorithms on Racial and Ethnic Healthcare Disparities](#)

The Agency for Healthcare Research and Quality and the National Institute on Minority Health and Health Disparities are hosting a panel discussion to explore the current use of algorithms, their impact on racial/ethnic disparities in care, and approaches to identify and mitigate existing biases.

[Friday-Sunday, March 3-5 | APAMSA 29th Annual National Conference](#)

The 29th Annual Asian Pacific American Medical Student Association (APAMSA) National Conference, hosted by OHSU, brings together more than 300 medical students, pre-health students, APAMSA alumni, and other physician and speakers from across the nation.

[Wednesday, March 8 | Faculty Diversity Advancement Pathway Gathering](#)

OHSU Residents and fellows who might be interested in academic medicine are welcome to join us for dinner. This event is geared toward minoritized individuals from racial/ethnic groups underrepresented in academic medicine. RSVP [here](#).

[Wednesday, March 9, 10 a.m. | Improving the Integration of Women's Health into Medical Education: Addressing persistent disparities in clinical care and outcomes](#)

This session will highlight several innovative approaches to teaching and learning, as part of the AAMC's Building Better Curriculum series. Learn from and with educators about integrating women's health into health professions education.

[Thursday, March 9, noon | Assessing stakeholder perspectives on social care among diverse marginalized populations in clinical settings](#)

Join this webinar to learn about how screening for adverse social determinants and providing social care is increasingly being implemented in community health centers as part of their strategies to improve health equity.

[Tuesday, March 14, noon | Timely Topics: Bridges Collaborative Care Clinic](#)

The Bridges Collaborative Care Clinic is Oregon's first multi-institutional and multi-disciplinary student-run free clinic. Members of the collaborative will share their involvement with the team and the care they provide to the community. Hosted by the OHSU School of Medicine Alumni Association.

[Tuesday, March 21, 8 a.m. | Sexual Harassment and Gender Inequity in Academic Medicine](#)

Join OHSU's Department of Medicine Grand Rounds where Dr. Elizabeth Vigilant will lead the discussion.

[Thursday, March 23, noon | Diverse Voices: Intersectionality and the Health of Women](#)

Attendees will learn how to use intersectionality to enhance understanding of the interaction between stigmatized mental health disorders and multiple marginalized identities and how to advocate for health care and research interventions.

[Thursday-Friday, March 30-31 | Inclusive Participation in Clinical Research](#)

This workshop will explore how to improve implementation of evidence-based best practices to increase inclusive participation in clinical research.

[Thursday, Apr. 6, 11 a.m. | Effects of Comprehensive Care in a Socioeconomically Diverse Minority Population](#)

The National Institute on Minority Health and Health Disparities is hosting a series of lectures highlighting prominent researchers who are advancing the science of minority health and health disparities.

On the pulse

- [OHSU Knight Cancer Institute's Community Partnership Program focuses on funding for underserved communities](#)
 - [Lisa Marriott, Ph.D. receives NIH award for excellence in diversity, equity, inclusion and accessibility mentorship](#)
 - [OHSU physician-scientist elected to National Academy of Engineering](#)
 - [What is Ancient Greek Medicine?](#)
 - [NIMHD Funded Study Compares Rural, Urban Counties' Death Rate Disparities](#)
 - [OHSU Women's Health Monthly](#)
 - [OHSU School of Medicine Diversity Mentorship Applications are still open, apply today](#)
-

Funding opportunities

- [AAMC Telehealth Equity Catalyst Awards, March 20](#)
- [AAMC Center for Health Justice fellowship, March 31](#)
- [Research Supplements to Promote Diversity in Health-Related Research, June 30](#)
- [Administrative Supplements to Recognize Excellence in Diversity, Equity, Inclusion, and Accessibility \(DEIA\) Mentorship](#)
- [Addressing Health Disparities Among Immigrant Populations Through Effective Interventions](#)

Join the Multilingual ERG!



Spotlight: Miguel Marino, Ph.D.



“Oregon is the only West Coast state without a center dedicated to Latino health research, and OHSU can fill this gap — not only to serve Oregon’s largest racial ethnic group, but also to place Oregon on the national stage of new and innovative approaches to end health inequities among Latinos,” Marino said.

Read the announcement in [English](#) and [Spanish](#).

Miguel Marino, Ph.D., associate professor of family medicine, OHSU School of Medicine and associate professor, OHSU-PSU School of Public Health, is a first-generation Mexican American scientist and biostatistician. He has [earned unrestricted funding](#) to extend leading-edge research to ultimately improve human health.

Dr. Marino, in collaboration with John Heintzman, M.D., M.P.H., associate professor of family medicine, will establish a new center that will incorporate information about Latino populations in the study of health inequities; build capacity in this area of research by developing an ethnically diverse workforce; and, work to ensure the center's approach aligns with community needs.

Dr. Marino, who was [elected to the National Academy of Medicine in 2022](#), chose to apply his expertise in biostatistics in family medicine rather than a traditional faculty pathway, developing a career working alongside community-based clinicians.

[Religious Holiday Calendar](#) | [AAEO Religious Accommodations and Disability Accommodations](#)

The SoM Belong, Include, Empower e-newsletter is sent monthly to members of the OHSU School of Medicine. This space is dedicated to the valuable role of Diversity, Equity, Inclusion and Anti-racism (DEI&A) practices in promoting trust, engagement and well-being. Have an idea, resource or an event to share? Questions and comments? somdiversity@ohsu.edu