



Content warning: In support of trauma-informed communication, please be aware that this message references violence. Resources for OHSU members are available [here](#).

Dear OHSU School of Medicine Community:

As we enter Black History Month, I want to honor the first African American student to receive an M.D. degree in 1949, from what is now the OHSU School of Medicine. [Dr. Walter Reynolds was an activist](#) physician, role model and an example of resilience. In his honor, OHSU named one of the two trams "Walt."

On a sad note, I want to acknowledge that these past weeks have brought pain and loss to community members ranging from Monterey Park, Half Moon Bay and most recently Los Angeles. [We also grieve](#) for Tyre Nichols, his family and the Memphis community. We are left with many unanswered questions that may directly impact us. We encourage you to seek support through [resources](#), comfort and friendship. This leads me to bring your attention to three different programs offering a sense of belonging and community:

- [SoM Diversity Mentor Program](#), first and second-year medical students are invited to apply
- [GME-to-Faculty Diversity Advancement Pathway](#), trainees and junior faculty are invited to participate
- [GSO Peer Mentorship Program](#), open to graduate students

On a celebratory note, the School of Medicine's Office of Diversity, Equity and Inclusion is celebrating our one-year anniversary of launching our "Belong, Include, Empower" newsletter. Our goal is to share resources, tools, events and more - bringing awareness to and advancing our DEI and Anti-racism efforts in the school.

Lastly, a reminder to join Dean David Jacoby for his first [State of the School Address](#), to learn of the school's progress and successes.

Sincerely,

Leslie Garcia, M.P.A., Ed.D.
Associate Dean for Diversity, Equity, and Inclusion
OHSU School of Medicine

February Observances

[Low Vision Awareness Month](#)

Raise awareness and share resources of the importance of regular eye exams. Vision impairment affects millions of Americans. Among them are many older adults.

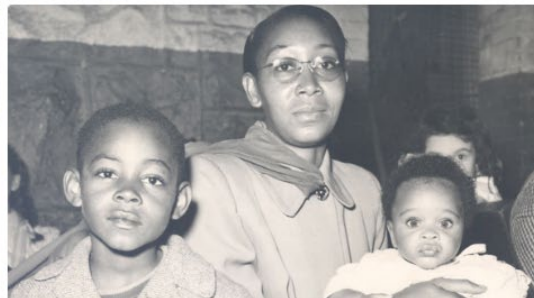
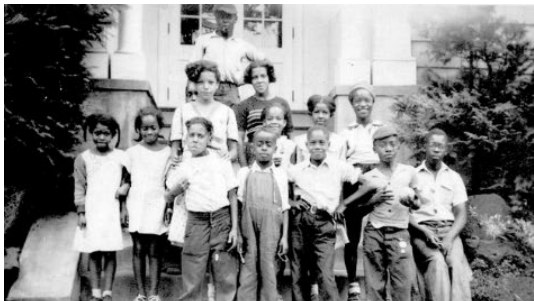
[American Heart Month](#)

Heart disease is the leading cause of death for men, women, and various [racial and ethnic groups](#) in the U.S. Bring greater attention to heart disease as a leading cause of death for Americans. Know your risk, protect your heart and learn about heart-healthy living.

[National Wear Red Day | Feb. 3](#)

Raise and spread awareness to eradicate heart disease and stroke in millions of women across the U.S.

Black History Month



Explore an essay and [photo collection called "Blacks in Oregon,"](#) a project of the Oregon Historical Society.

The [origins of Black History Month](#) date to 1915, half a century after the Thirteenth Amendment abolished slavery in the United States. Historian Dr. Carter G. Woodson and minister Jesse E. Moorland founded the [Association for the Study of African American Life and History \(ASALH\)](#), an organization dedicated to researching and promoting achievements by Black/African Americans and other peoples of African descent. Join ASALH's [2023 Black History Month Virtual Festival](#) and explore the [2023 Black History Theme: Black Resistance](#).

Black/African Americans in Oregon have successfully lobbied for new laws and championed practices to address discrimination. Watch [Oregon's Enigmatic Black History](#) by the Oregon's Historical Society. Learn about the [Grand Emancipation Celebration](#) and [Black Exclusion Laws in Oregon](#).

Read about [Black/African American health](#) in the United States.

And, in case you missed it: Antwon Chavis, M.D., assistant professor of pediatrics, presented "[Why aren't there more Black people in Oregon?](#)" The session was sponsored by the School of Medicine Office of Faculty Development and the Provost's Office of Educational Innovation and Improvement.

New Center for Reproductive Health Equity led by Dr. Maria Rodriguez



"Recently we've seen such extreme measures taken to limit access to reproductive health care, and these actions have very real consequences on the health of women in this country." - Maria Rodriguez, M.D., M.P.H.

Maria Rodriguez, M.D., M.P.H., professor of obstetrics and gynecology in the School of Medicine is the director of the new center housed within [OHSU's Department of Obstetrics and Gynecology](#) in the School of Medicine. The center will focus on three key areas: research, education and clinical care.

Research priorities will include determining the role that health-systems factors play in mitigating or perpetuating reproductive health disparities, and evaluating different clinical interventions that promote reproductive health equity. The center's education efforts will engage students, residents and faculty on the role of policy in shaping factors and conditions related to reproductive health equity. And importantly, the center will enlist clinicians to improve reproductive health care access for marginalized populations, both in Oregon and across the country.

Read the announcement in [English](#) and [Spanish](#).

Enrichment

All events are listed in Pacific Time, even those hosted in other time zones.

[Wednesday, Feb. 1, 4 p.m. | Black American Veterans & Psychedelic Therapy](#)

In honor of Black History Month, OHSU's Social Neuroscience & Psychotherapy (SNaP) Lab will host a series of free weekly virtual events offering cutting-edge perspectives on DEI and the psychedelic space. Presentations

include: Black American Veterans & Psychedelics, Black-Centered MDMA-Assisted Psychotherapy, Addressing Racial Trauma with Psychedelic-Assisted Therapy, and Black Affinity Spaces & Psychedelic Peer Support.

[Tuesday, Feb. 7, 11 a.m. | History of Racism in U.S. Health Care: Root Causes of Today's Hierarchy and Systems of Power](#)

This inaugural event in the National Equity Grand Rounds series will highlight the root causes of present-day health inequities by tracing the social, economic, political, geographic, and environmental forces that shape opportunity for health in the U.S.

[Tuesday, Feb. 7, noon | Unpacking Neglected Social Factors to Ensure Impact](#)

It is imperative to understand the social and ethical roots of our present conversations about health inequalities in order to partner with the public, researchers and policy makers for real impact.

[Tuesday, Feb. 7, 6 p.m. | Screening of 'Black Men in White Coats'](#)

Black Men in White Coats is an organization that seeks to increase the number of Black men in medicine by exposure, inspiration, and mentoring. They partner with medical schools across the country to produce short documentaries. OHSU's Department of Emergency will host an in-person screening at OHSU's Robertson Life Science Building, room 3A001.

[Wednesday, Feb. 8, 11 a.m. | Community-engaged Approaches for Preventing and Controlling Obesity Among U.S. Latinos/Hispanics](#)

Dr. Ayala will describe a program of research in a rural community to address the issues of obesity and diabetes in the U.S. Latino/Hispanic community. This program of research was an outgrowth of early collaborations between a research team and representatives from a Federally Qualified Health Center seeking to improve the health of the community.

[Thursday, Feb. 9, 11 a.m. | The Intractability of Health Disparities: Where Do We Go From Here?](#)

Join to discuss the pervasiveness of health disparities among the Black/African American community and the social and structural determinants that underlie health inequities.

[Thursday, Feb. 9, noon | Black History Month Panel Discussion](#)

Join OHSU's Center for Diversity and Inclusion to hear from established Black professionals at OHSU, gain insight into each panelists' career path, and discuss the importance of celebrating Black history.

[Thursday-Saturday, Feb. 9-11 | NAHN Hispanic Health Policy Summit](#)

Led by the National Association of Hispanic Nurses, this summit unites Latino healthcare community members to advocate for health care issues affecting the Hispanic population and proposing potential solutions.

[Tuesday, Feb. 14, noon | More than Medicine: OHSU's Journey to Deliver Gender Affirming Care](#)

Join this Timely Topics webinar about OHSU's Transgender Health Program presented by the School of Medicine Alumni Association.

[Wednesday, Feb. 15, 5 p.m. | Transgender Health Program Community Meeting](#)

Participate in this monthly meeting and discuss community needs and priorities. Have questions or topics for discussion? send them in advance to penkin@ohsu.edu

[Sunday-Wednesday, Feb. 19-22 | AHA Rural Health Care Leadership Conference](#)

The 36th annual American Hospital Association conference brings together top practitioners and thinkers to share strategies and resources for accelerating the growth of a stronger rural health system.

[Tuesday, Feb. 21, 6 p.m. | SNMA Trivia Night: A Celebration of Black History Month](#)

Join the Student National Medical Association (SNMA) for an evening of community. Food will be provided. Prizes for winners! RSVP [here](#).

[Thursday, Feb. 23, 5 p.m. | ACGME Resident and Fellow Diversity Mentorship Dinner](#)

Medical students, residents and fellows are invited. Please RSVP at gme@ohsu.edu

[Friday-Sunday, March 3-5 | APAMSA 29th Annual National Conference](#)

The 29th Annual Asian Pacific American Medical Student Association (APAMSA) National Conference, hosted by OHSU, will bring together more than 300 medical students, pre-health students, APAMSA alumni, and other physicians and speakers from across the nation. [Registration is open](#).

Delivering free skin cancer screenings



The Knight Cancer Institute's mobile outreach team delivered free skin cancer screenings and resources in [Salem](#). Sancy Leachman, M.D., Ph.D., professor and chair of dermatology, and Latino Medical Student Association (LMSA) members at OHSU, traveled to a community health fair in Salem offering screenings and cancer prevention information.

On the pulse

- [OHSU's Casey Eye Institute: Community Outreach Program 2022 Annual Impact Report](#)

- [Health Equity: Weaving intentionality into health system operations](#)
- [Knight Cancer Institute funds community projects to provide culturally relevant resources, education, workshops with Spanish-speaking and African immigrant/refugee populations](#)
- [OHSU makes strides increasing diversity in clinical studies](#)
- [COMPADRE program is an example of a cross-state effort](#)
- [Outdated Medical Terminology: A guide for medical students, educators and providers](#)

Grant opportunities

- [Maternal and Child Health Secondary Data Analysis Research, by Feb. 13](#)
- [Implementation Research on Noncommunicable Disease Risk Factors among Low- and Middle- Income Country and Tribal Populations Living in City Environments, by March 9](#)
- [Research Centers in Minority Institutions, by March 1](#)
- [Technology Development to Reduce Health Disparities, by May 31](#)

Covington Response

You can find the latest updates in [O2](#). Please review the [accountability dashboard](#) (last updated on Jan. 10) and SBAR proposals that are currently in review. The School of Medicine representative is Leslie Garcia, M.P.A., Ed. D., associate dean diversity, equity and inclusion, OHSU School of Medicine. Contact her with questions and feedback at garcial@ohsu.edu.

Spotlight: Stephanie Dukhovny, M.D.



The OHSU Women in Academic Medicine Committee was established as a standing committee of the School of Medicine in 1993 to address issues impacting women faculty. These issues included career advancement, career satisfaction, participation by women in decision-making bodies at OHSU, pay equity, discrimination, and parenting and schedule flexibility issues.

In 2019, after a careful review process and stakeholder meetings, the committee expanded to become an OHSU-wide committee representing all schools, affiliated units, the OSU College of Pharmacy, and a structured standing committee within the OHSU Faculty Senate. They also changed their name to the Gender Equity in Academic Health and Medicine.

“In 2020-2021, we expanded our mission and changed our name to Gender Equity in Academic Health and Medicine Committee (GEAHM) to reflect our broader gender equity mission where all perspectives dedicated to the advancement of women and gender-diverse individuals across OHSU are sought.” said Stephanie Dukhovny, M.D., associate professor of obstetrics and gynecology, OHSU School of Medicine and committee co-chair. *“I currently co-chair the committee and I represent GEAHM on the OHSU Faculty Senate Pay Compensation Work Group, where my focus is to help highlight places and ways the compensation plan may lead to improved gender and racial equity at OHSU.”*

[Religious Holiday Calendar](#) | [AAEO Religious Accommodations and Disability Accommodations](#)