

Presents

Community Collaborations: Reaching Vulnerable Populations Through Partnerships

Speaker:

Rylie Tiffin, Region 2 Testing Coordinator, Santiam Hospital & Clinics SCoPE Lab

Our top partners



WIPFLI





Community Collaborations: Reaching Vulnerable Populations Through Partnerships

Region 2 Testing Coordinator

Rylie Tiffin, Santiam Hospital & Clinics

October 14, 2022



Agenda

1. Introductions
2. Building Collaboration Pathways
3. Key Findings
4. Measuring Success
5. Case Studies
6. How You Can Launch



Introductions

Building
Pathways

Findings

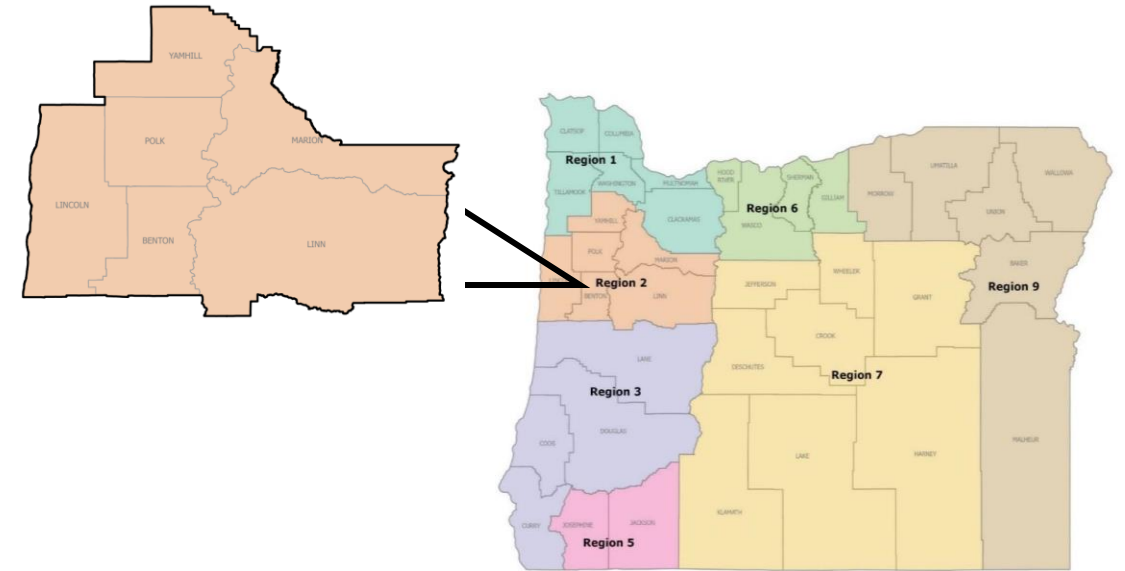
Metrics

Case Studies

Launching

Who Am I?

- Regional Testing Coordinator: Ensure testing access for vulnerable populations throughout Region 2 by filling in gaps and alleviating barriers.
- “Vulnerable populations” defined as:
 - Uninsured
 - Congregate care settings
 - Migrant and seasonal farmworkers
 - People of color
 - Those experiencing disabilities



Introductions

Building
Pathways

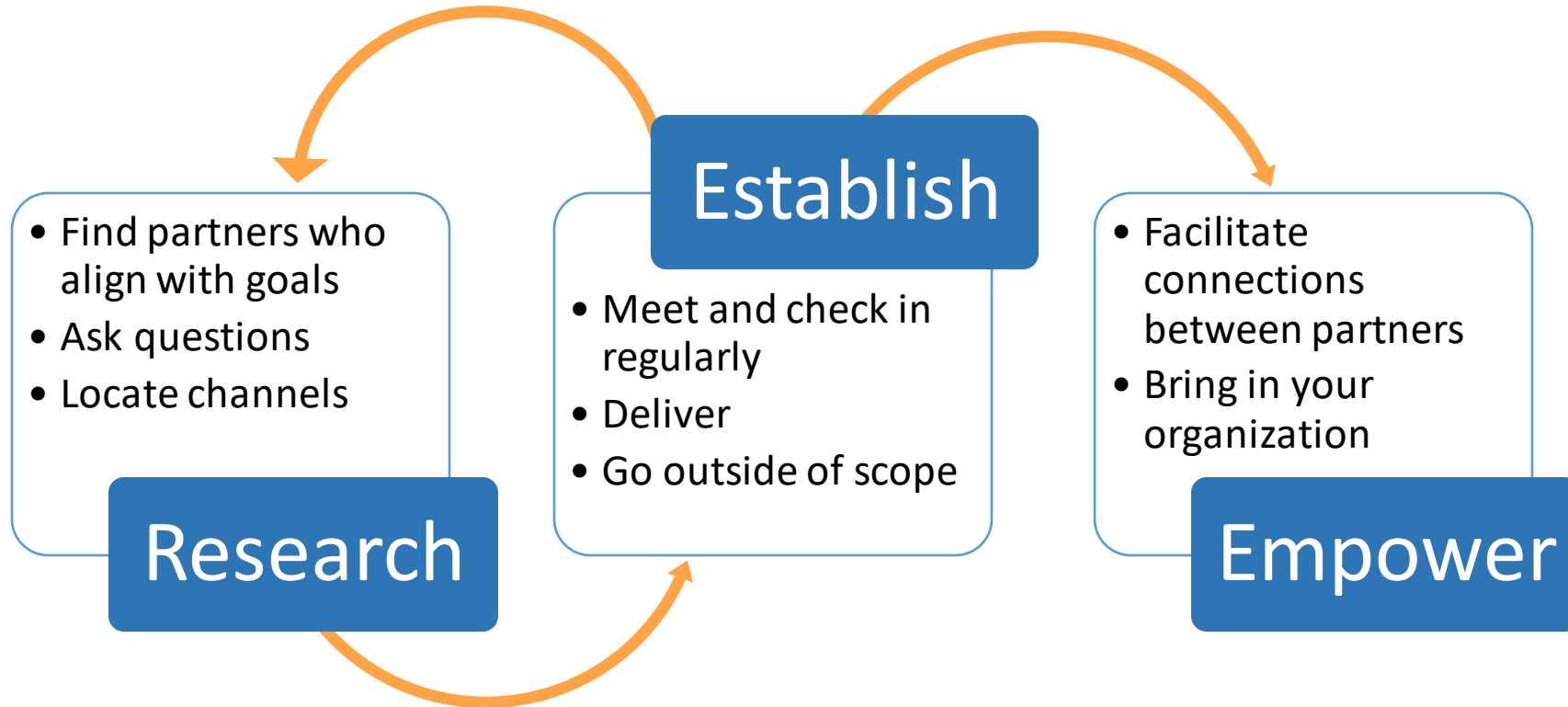
Findings

Metrics

Case Studies

Launching

Building Collaboration Pathways



Introductions

Building
Pathways

Findings

Metrics

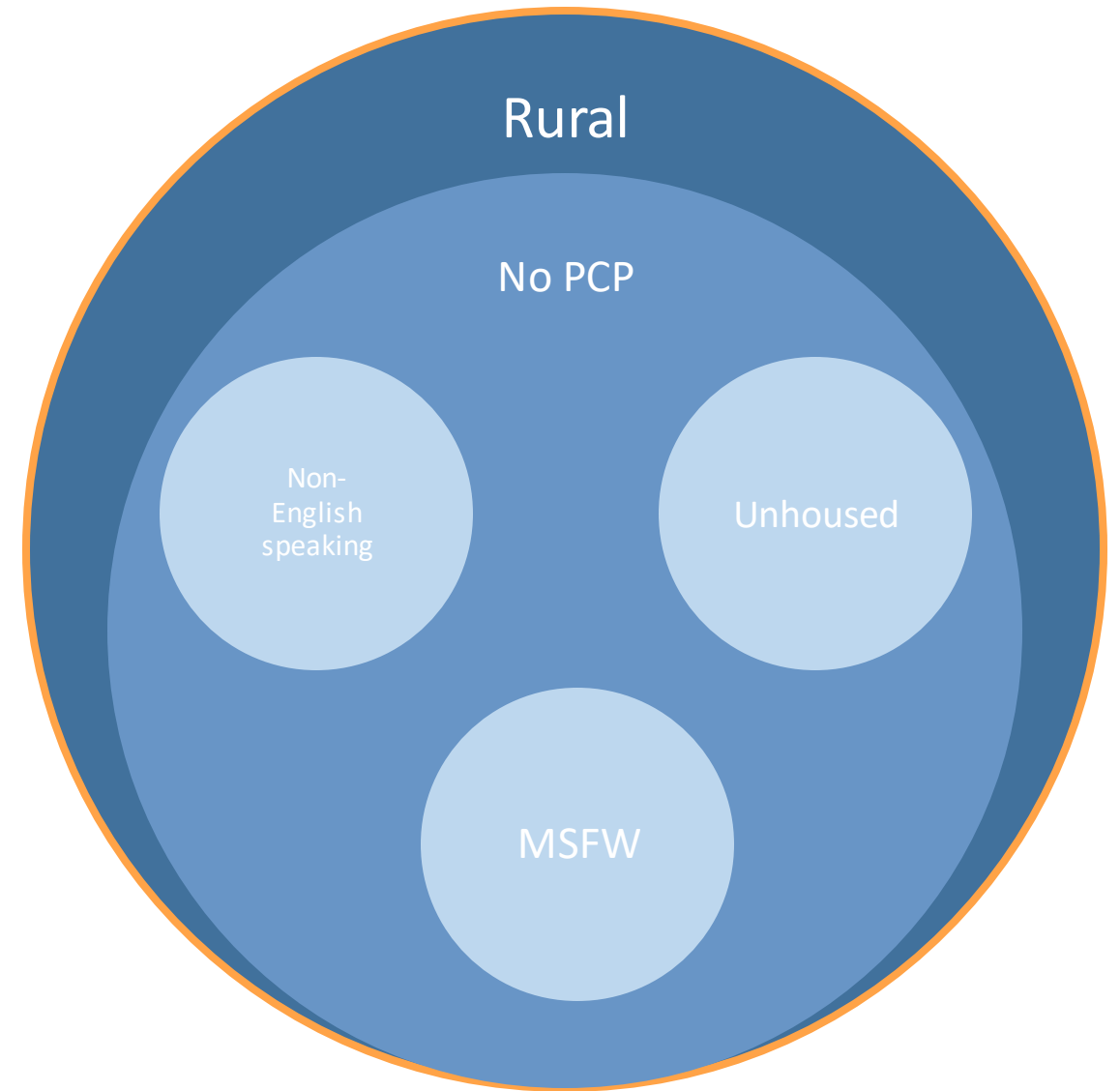
Case Studies

Launching

Key Findings

Rural Locations

- Partners may prefer in-person meetings. Taking the time to go to them can reap much more successful partnerships.
- Patients may be disenfranchised with the healthcare system. This means that the less information that they have to give, the happier that they will be.



Introductions

Building
Pathways

Findings

Metrics

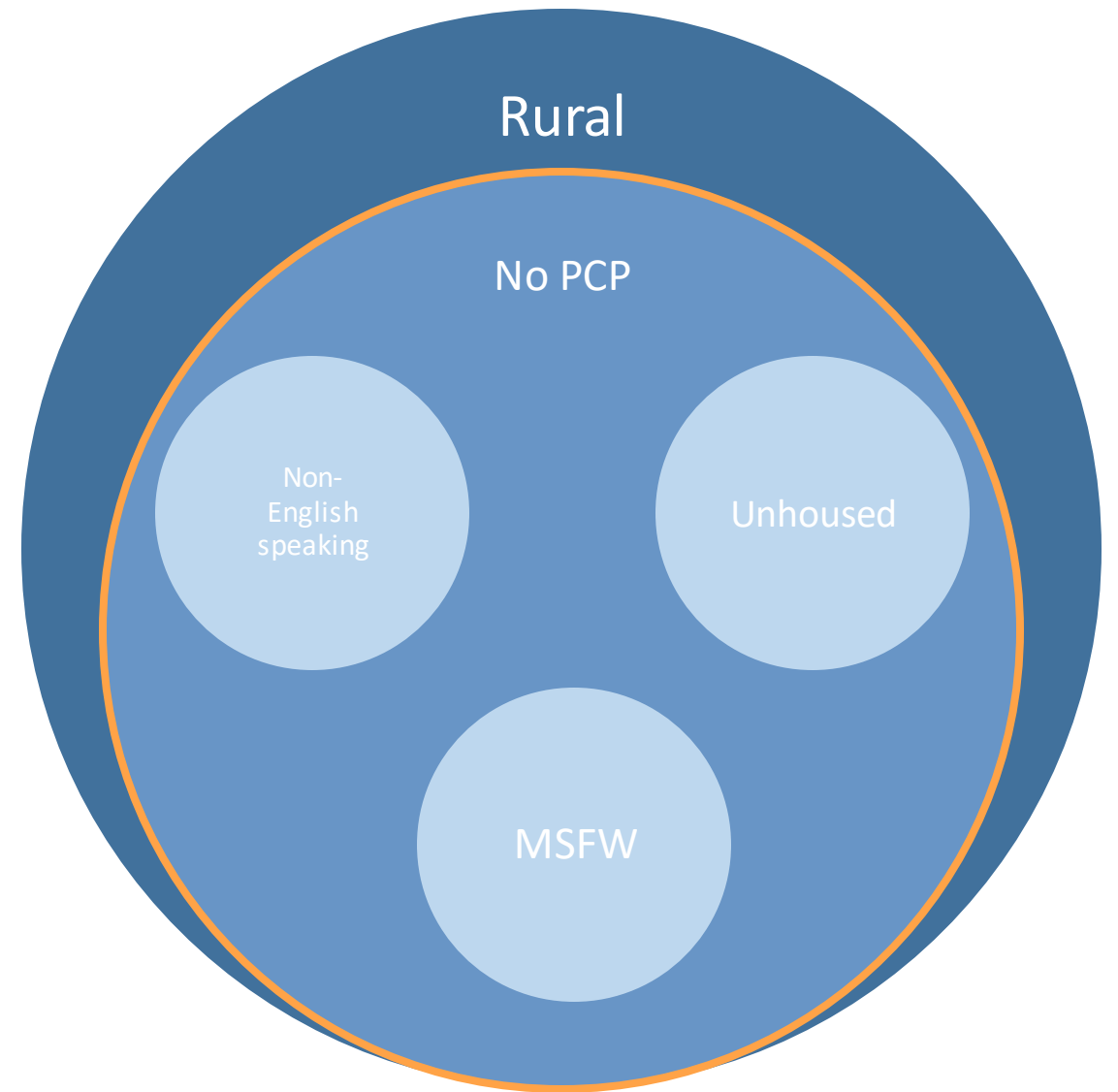
Case Studies

Launching

Key Findings

Patients Without a Primary Care Provider

- May not be able to access basic care
- Find it harder to get prescriptions
- For what services can you provide a blanket provider order? Who can act as proxy for the provider?
- Then, how can you connect them with a PCP?



Introductions

Building
Pathways

Findings

Metrics

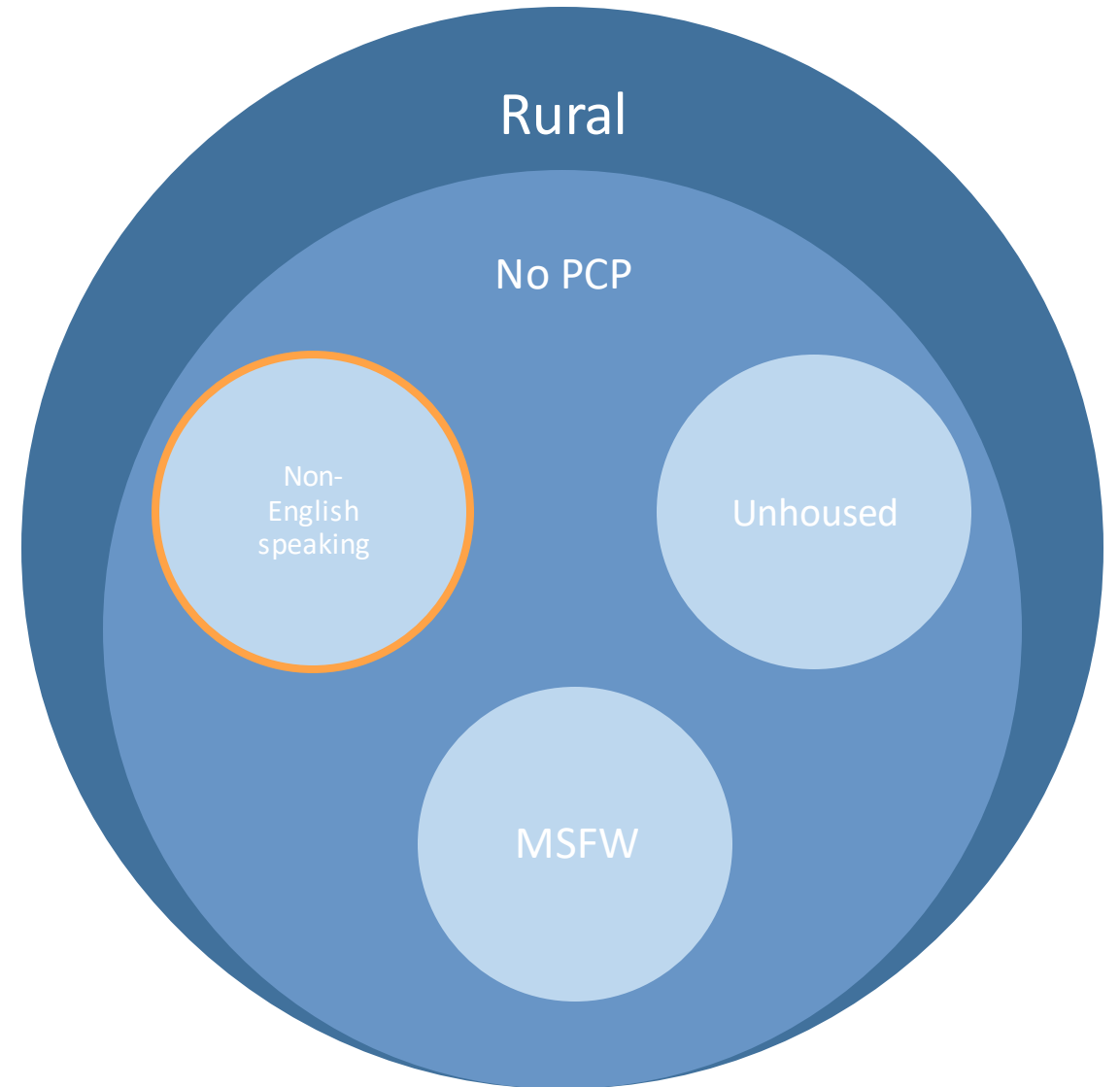
Case Studies

Launching

Key Findings

Non-English Speaking Patients

- Many EHRs are not designed for all cultures of naming systems. This can lead to errors and less patient-centered communication in facility operations that don't have direct patient interaction.
 - How many letters does it accept?
 - Will it take more than one last name?
What is the hyphen requirement?
 - Do you have to merge accounts?



Introductions

Building
Pathways

Findings

Metrics

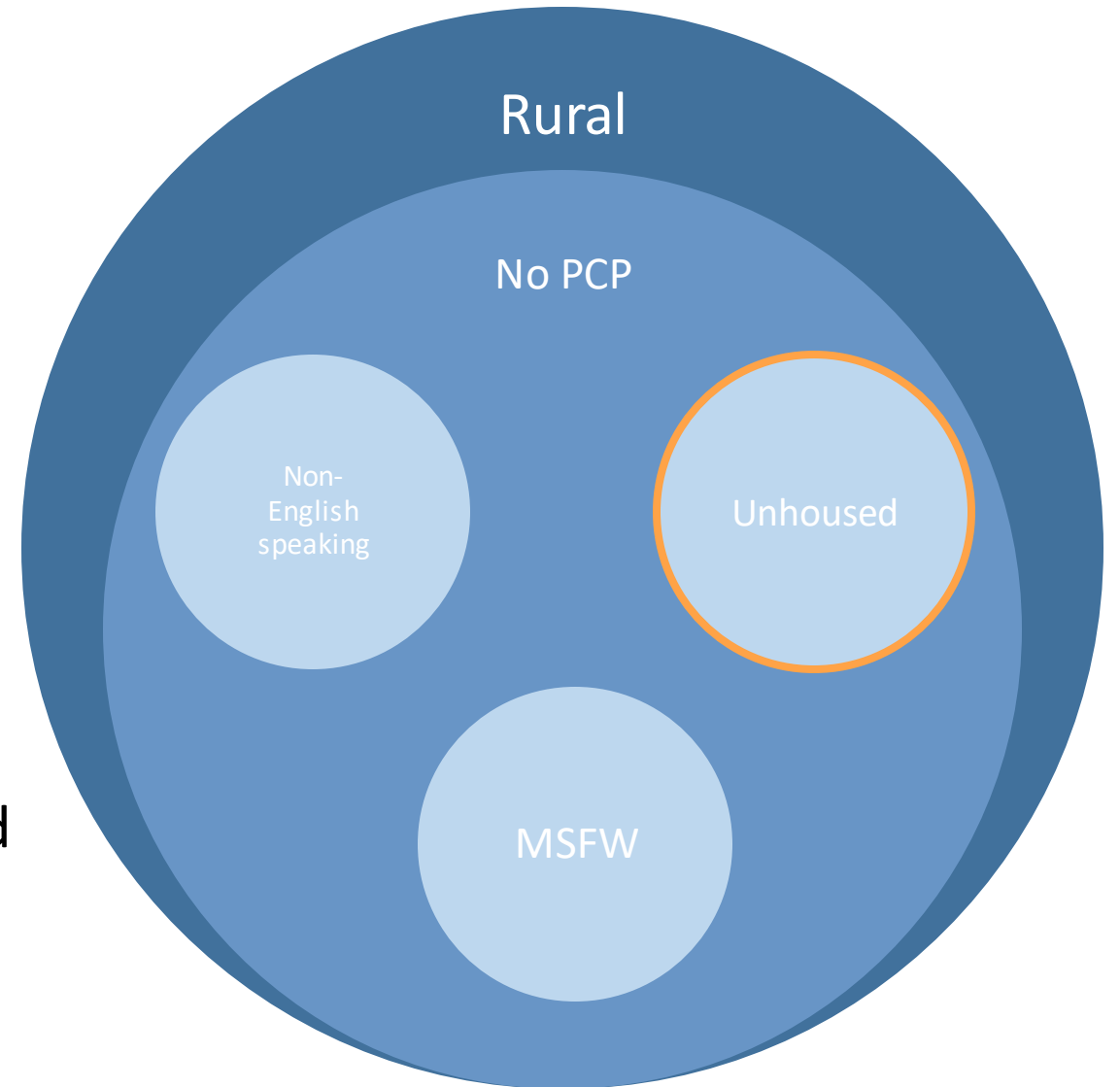
Case Studies

Launching

Key Findings

Unhoused Patients

- Harm reduction sites
- Fred Meyer gift cards
- If they are staying in a shelter, can they stay there with the condition that they have?
- What information exists at the shelters related to healthcare? What can be expanded?



Introductions

Building
Pathways

Findings

Metrics

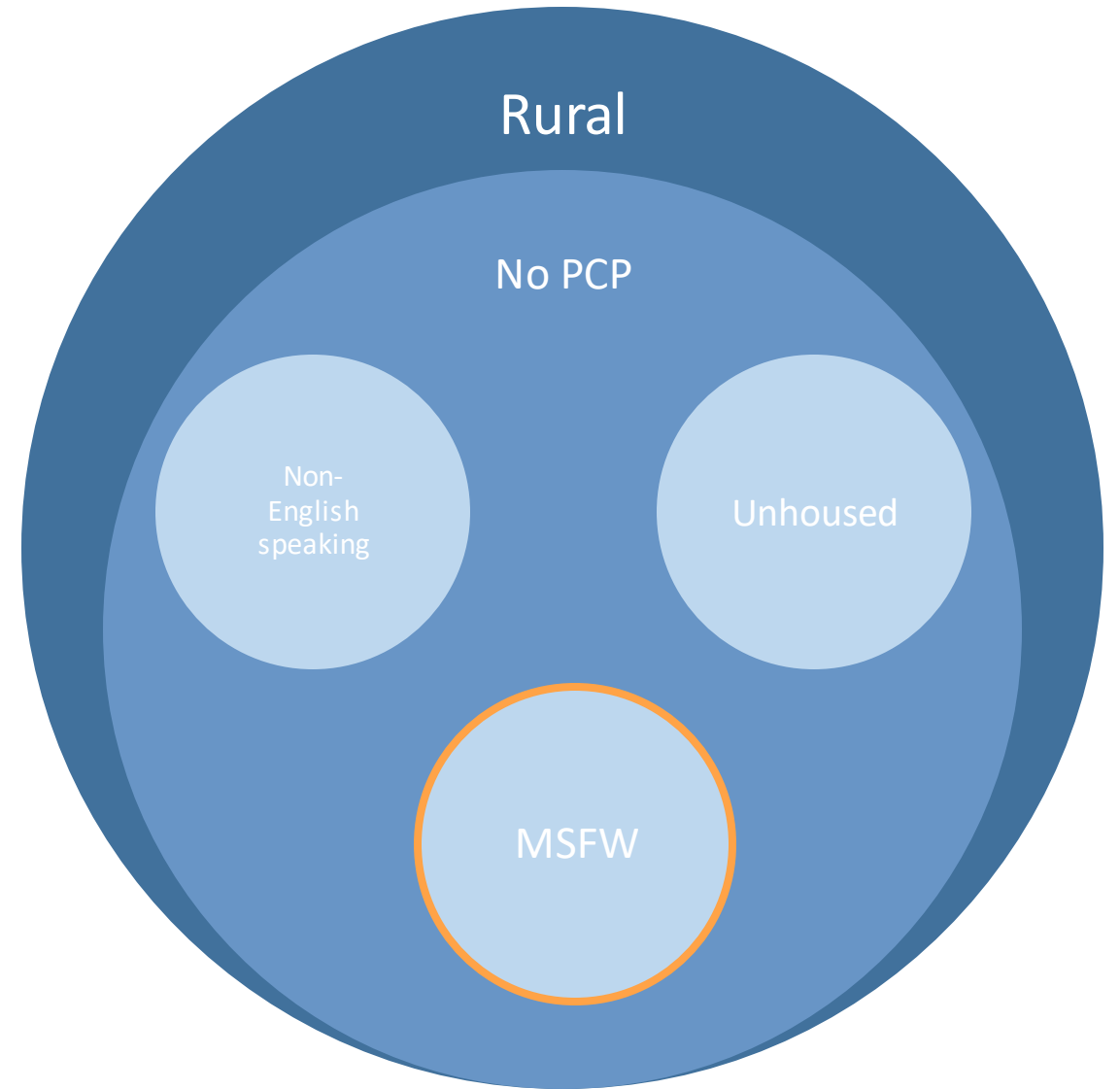
Case Studies

Launching

Key Findings

Migrant and Seasonal Farmworker Patients

- Not just Spanish speaking
- Listen to radio in the fields
- Apartment complexes provide low barrier sites for community care clinics



Introductions

Building
Pathways

Findings

Metrics

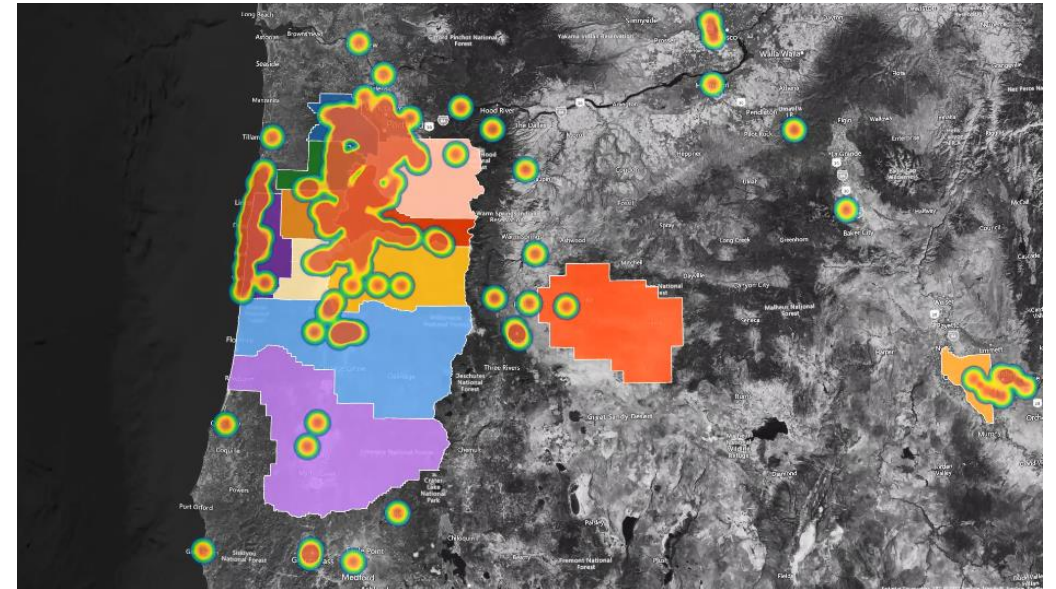
Case Studies

Launching

Measuring Success

Developing Metrics

- What are your goals?
 - Provision of care
 - Promotion of services
 - System change
 - Geographic Coverage
- Who are you targeting?
- Where are you targeting?



Introductions

Building
Pathways

Findings

Metrics

Case Studies

Launching

Measuring Success

Measurement Methods

- Are your patient portals set up to ask for this information? Can you integrate data collection in your service?
- If you can't ask it of the patient, can you look at your efforts? How many events have you done at particular targeted sites? Are your partners well educated on available services?



Introductions

Building
Pathways

Findings

Metrics

Case Studies

Launching

Measuring Success

Benefits

- Identify growth opportunities
- Connect patients to applicable services
- Offer scalability



Introductions

Building
Pathways

Findings

Metrics

Case Studies

Launching

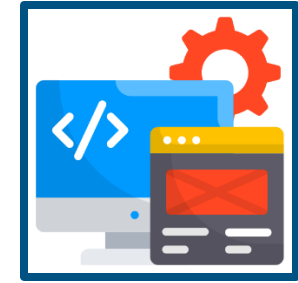
Case Studies



John, a patient at Yamhill
County Fairgrounds
during the Omicron surge



Demobilization of an
LPHA and utilization of
network



Change reporting
portal based on
feedback

Introductions

Building
Pathways

Findings

Metrics

Case Studies

Launching



How You Can Launch

Research

- LPHAs
- Resource Handbooks

Considerations

- Episodic funding
- Wraparound care
- Provider shortage

Introductions

Building
Pathways

Findings

Metrics

Case Studies

Launching

A stylized tree with a brown trunk and two curved branches is positioned on the left side of the slide. A thick orange arc curves from the bottom left towards the top right, partially framing the text. The background is a solid dark blue.

Questions?

Thank You to All of our Partners!



Building healthier communities together



Workability One

inQuiseek

OHA Oral Health

NEON

Grand Canyon University