



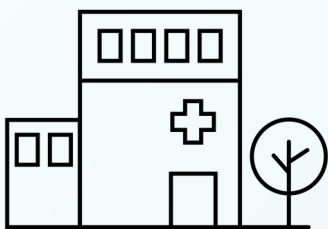
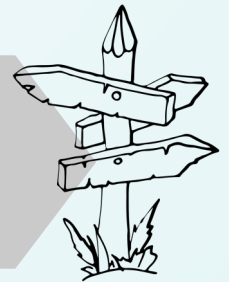
NATIONAL  
RURAL HEALTH  
RESOURCE CENTER

# Rural Healthcare Provider Transition Project (RHPTP)

## Apply for One Year of Virtual and Onsite Technical Assistance

RHPTP is supported by the Federal Office of Rural Health Policy with technical assistance (TA) provided by the National Rural Health Resource Center. RHPTP is designed to help strengthen your organization's foundation in the key elements of value-based care including but not limited to efficiency, quality, patient experience, and safety of care. The goal is to guide, prepare, and position rural hospitals and clinics to be an effective participant in a health system focused on value.

**Did you know there are numerous ways to participate in value-based care? Let us help you navigate strategies and activities that are the right fit your organization!**



### Who Should Apply?

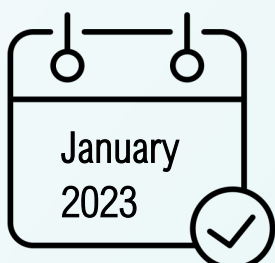
Small Rural Hospitals and  
Certified Rural Health Clinics

### When's the Deadline?

Applications are accepted on a rolling basis, however, the deadline for 2022-2023 project year is 9/30/2022.

### When Does TA Begin?

If selected into this cohort, TA for this project will begin in January and end in August 2023.



### Questions?

[rhptp@ruralcenter.org](mailto:rhptp@ruralcenter.org)

### Easy to Apply?

The application has been simplified to take no more than 10 minutes!

**For more information, watch this [short video](#) and visit the [website](#) for [eligibility and application process](#), [benefits of participation](#), and [FAQs](#).**