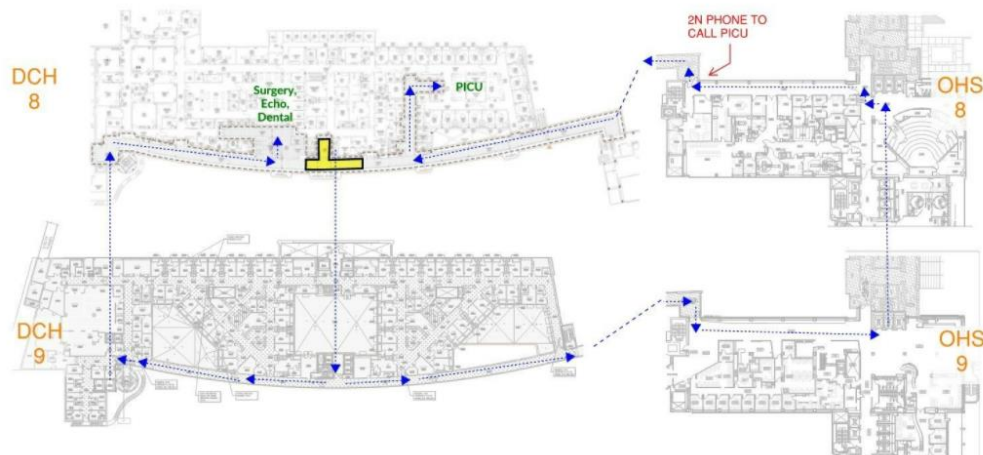


Dorenbecher Children's Hospital Pediatric Surgery Services **WAYFINDING ASSISTANCE SHIFTS:**

Volunteers in this position will be assisting DCH families through detoured paths to the 8th floor Pediatric Surgery Services department while the waiting room is inaccessible for flooring replacement. The Pediatric Surgery Services check in desk will be moved to the DCH lobby temporarily during this time.

- Sign up for shifts in [Volgistics here!](#)
 - Click the “schedule” tab
 - Select the “wayfinding (temporary)” assignment to sign up for available shifts
 - Shifts are available Monday through Friday, 6:30am to 7pm, January 21st through February 8th.
- Clock in for your shift using any of the VicTouch clock in stations and by selecting the “Wayfinding (temporary)” Assignment
 - As a reminder VicTouch clock in stations are located in the OHSU 9th floor lobby, DCH lobby and Dillehunt Hall 1005.
- Check in at the DCH **Day Stay unit charge desk** located on the 8th floor of DCH in the surgery department
 - If you are having trouble finding where to check in, please call the desk at 503-418-5650 for assistance
 - **To find Pediatric Surgery**, take the elevators to the 9th floor and travel south (turn right) to the Service Elevators and take them down to the 8th floor and follow signs to access the main entrances for Surgery, Echo and Dental.



- Unit staff will be available to give you a quick orientation of the space you will be working within, at the start of your shift