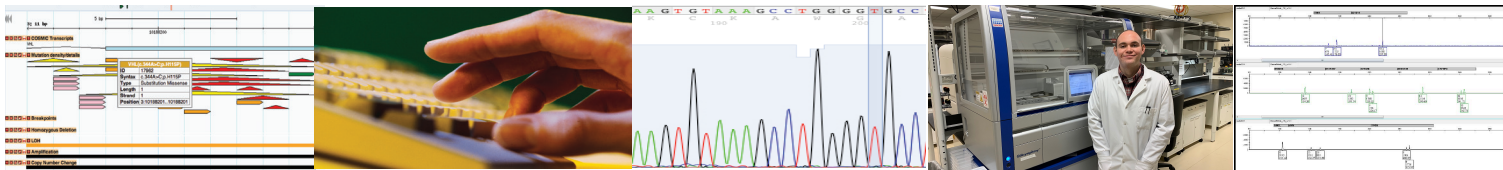


## OHSU Research Cores and Shared Resources

### DNA Services

#### A Unit of the Integrated Genomics Laboratory

OHSU's cores are your campus technology partners dedicated to the success of your project. For optimal results, take advantage of the state-of-the-art scientific resources within the OHSU community.



## Human Cell Line Authentication (CLA) Service at OHSU

### Director

Christina  
Harrington, Ph.D.  
harringc@ohsu.edu

### Core Staff

Britt Daughtry, Ph.D.  
daughtry@ohsu.edu

Alex Klug, B.S.  
klug@ohsu.edu

### Location

Laboratory:  
Room 5390  
Office:  
Room 5381  
Richard Jones Hall  
3181 SW Sam Jackson  
Park Road,  
Portland OR 97239



### Web

[www.ohsu.edu/dna](http://www.ohsu.edu/dna)

### Phone

Staff Office  
503.418.9376

Chris Harrington  
503-418-2737

### What is CLA and why is it important?

- ▶ A current issue in biomedical research is the misidentification of human and animal cell lines. This has led to a call by federal funding agencies and scholarly journals for reliable cell line authentication. In many cases, authentication of cell lines is now required for publication and grant submission.
- ▶ The DNA Services Core offers a human cell line authentication service using the GenePrint 10 system from Promega to confirm the identity of human cell lines. The GenePrint 10 assay uses short tandem repeat (STR) analysis to detect the presence of cell line contaminants or misidentified cell lines. The assay co-amplifies and detects 9 STR loci plus Amelogenin (the gender determining locus); recommended input for the assay is 10ng of cell line DNA.
- ▶ Data analysis is completed by comparing STR data from the GenePrint 10 assay to human cell line STR profiles available through public databases. This database includes data sets for thousands of cell lines from ATCC, Cellosaurus and DSMZ.

### What services are offered by the DNA Services Core?

- ▶ We currently offer three modes of service:
  - ▶ Full Service STR Profiling (**\$96/sample**)
    - Includes DNA quantification and quality assessment (DNA QA), GenePrint 10 assay, data analysis, and results report.
  - ▶ STR Profiling with Analysis, but without DNA QA (**\$82/sample**)
    - Includes GenePrint 10 assay, data analysis, and results report.
  - ▶ STR Profiling and Raw Data Only (**\$65/sample**)
    - Includes only GenePrint 10 assay, no DNA QA, no data analysis, and no formal report.

### Minimum sample number requirement

- ▶ In order to cover the setup and labor costs with each CLA assay performed, the core charges a 2 sample minimum per CLA request. Additional samples after the minimum 2 sample charge will be billed at individual sample rates.

For more information about the human cell line authentication service, please visit the DNA Services Core website ([www.ohsu.edu/dnaseq](http://www.ohsu.edu/dnaseq)) or contact Britt Daughtry at [daughtry@ohsu.edu](mailto:daughtry@ohsu.edu).