

OHSU Physician-Scientist Metrics Program

To help address the nationally-perceived decline in physician-scientists as members of the research workforce, OCTRI has been collating data on the demographics of physician-scientists at OHSU. These data are updated annually and have been used to make programmatic decisions at OCTRI and at OHSU in support of physician-scientists.

In the graphs show here, we have merged publicly available data from NIH and the Department of Veterans Affairs with data from OHSU's Office of Proposal & Award Management to gain insights into OHSU's performance over time.

OCTRI continues to provide substantial support for the development of physician-scientists and for their research endeavors.

OHSU AND NIH PHYSICIAN-SCIENTIST METRICS (1998 - 2019)

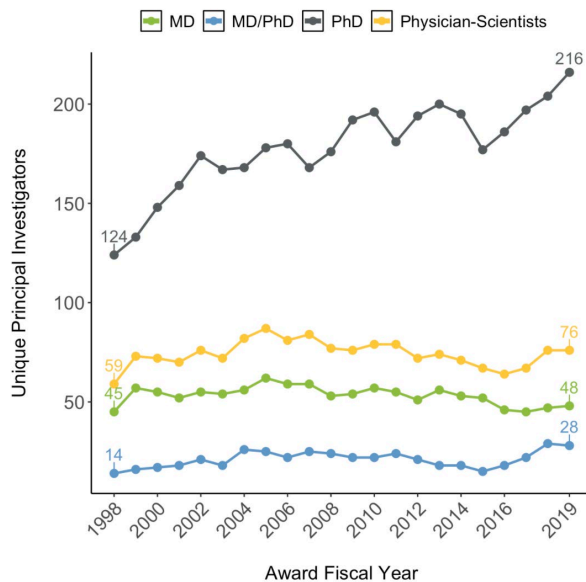


Figure 1. Number of principal investigators at OHSU with research project grants broken down by degree.

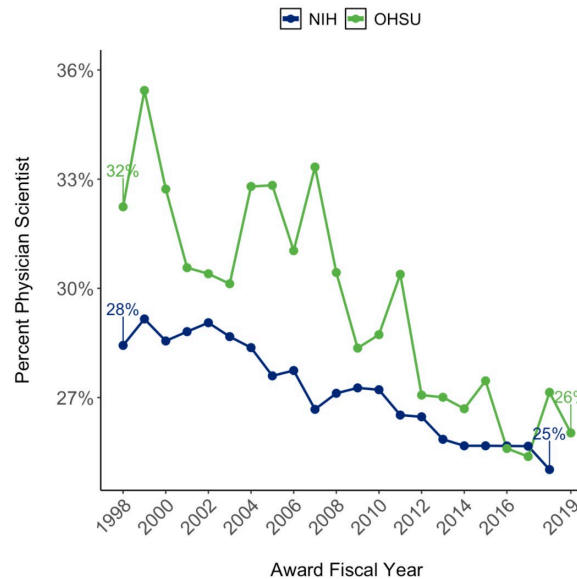


Figure 2. Percent of research project grant awardees who are physician-scientists.

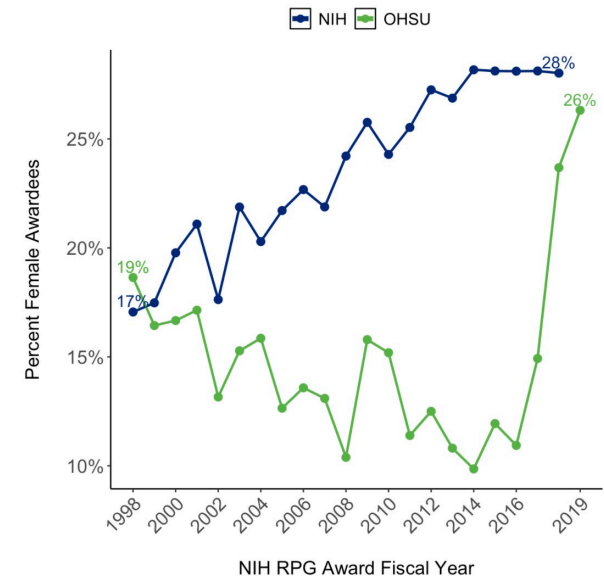


Figure 3. Percent of research projects grant awardees who are women.