

Admissions



SOM PHD APPLICANTS AND ENTRANTS

JANUARY 2020

DATA FROM 2018-19 APPLICATION CYCLE | INCLUDES 668 APPLICATIONS FROM 635 APPLICANTS

Key Points

- 7% of applications received resulted in a committed student.
- 19% of applications resulted in admission offers. Program acceptance rates ranged between 8% (CPSY) and 50% (BMI).
- 35% of admission offers were accepted.
- 50% of offers made to international applicants were accepted, 47% of offers made to Oregonians were accepted and 31% of offers made to other US residents were accepted.
- 24% of applicants and 32% of committed students held higher degrees at the time of application submission.
- International applicants represent 32 different countries, most frequently China, India, Iran, the Republic of Korea, and Taiwan.
- The average PhD applicant had 23.6 months of prior research experience upon application. The average committed student had 22.9 months.
- 43% of all PhD applications were submitted to PMCB, 25% to NGP, 14% to BEHN, 9% to CPSY, 8% to BME, 2% to BMI.
- Total applications received increased 4% from the previous cycle.

ADMISSIONS QUESTIONS?

Please contact us at somgrad@ohsu.edu or visit ohsu.edu/som/graduate

FIGURE 1: PhD applications and outcomes over time

Bar heights represent the number of applicants applying for admission to the listed admission cycle. Colored bands represent the proportion of the applicant pool of that cycle year who were denied admission, offered admission but declined, or offered admission and accepted. Offer declined data for the 2015-16 cycle are not available. Total applications minus offers accepted are displayed instead.

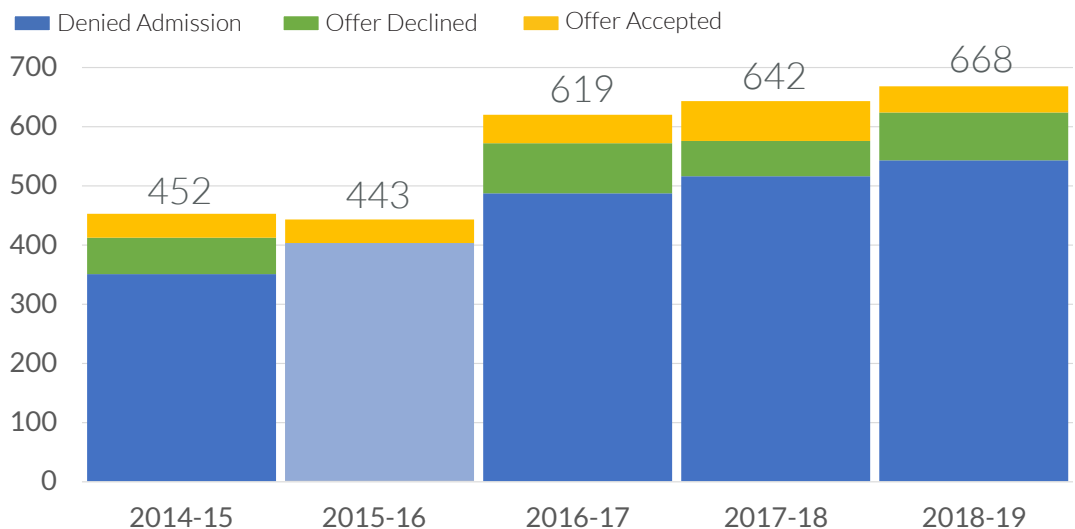
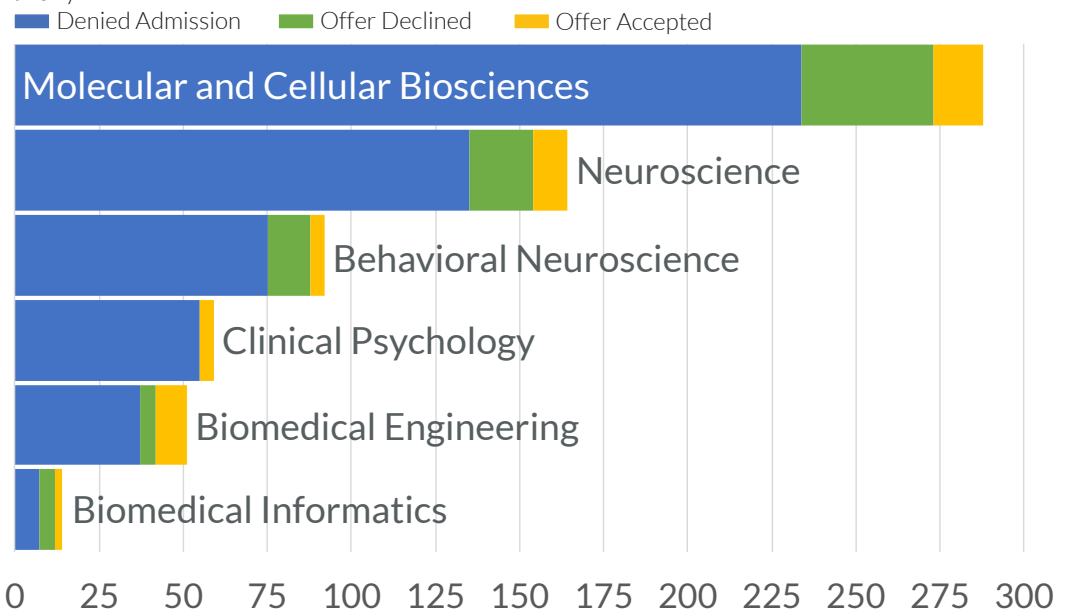


FIGURE 2: 2018-19 PhD application outcomes by program

Bar lengths represent the total size of each program's applicant pool and the colored bands represent the proportion of the applicant pool that were denied, offered admission but declined, or accepted offers this cycle.



DATA NOTES: Application and admissions data are reported by the application cycle in which the application was received, which is different than reports in previous years where data are reported by enrollment year. Annual new-student enrollment numbers may not exactly match what is reported here because of deferrals, transfers, withdraws prior to matriculation, and rolling admissions across application cycles. Applicants to the MD/PhD, Medical Physics, Computer Science and Electrical Engineering PhD programs are excluded from this report. For program specific data, please contact somgrad@ohsu.edu.

FIGURE 3: Demographics of applicant, offer, and committed student pools

The charts below depict the characteristics of all applicants who submitted applications during the 2018-19 cycle, of those offered admission from that cycle (offers), and of those who accepted offers from that cycle (commits). Underrepresented minority (URM) applicants include citizens and permanent residents who identify as one or more of the following: Hispanic or Latino, American Indian or Alaska Native, Black or African American, Native Hawaiian, Other Pacific Islander.

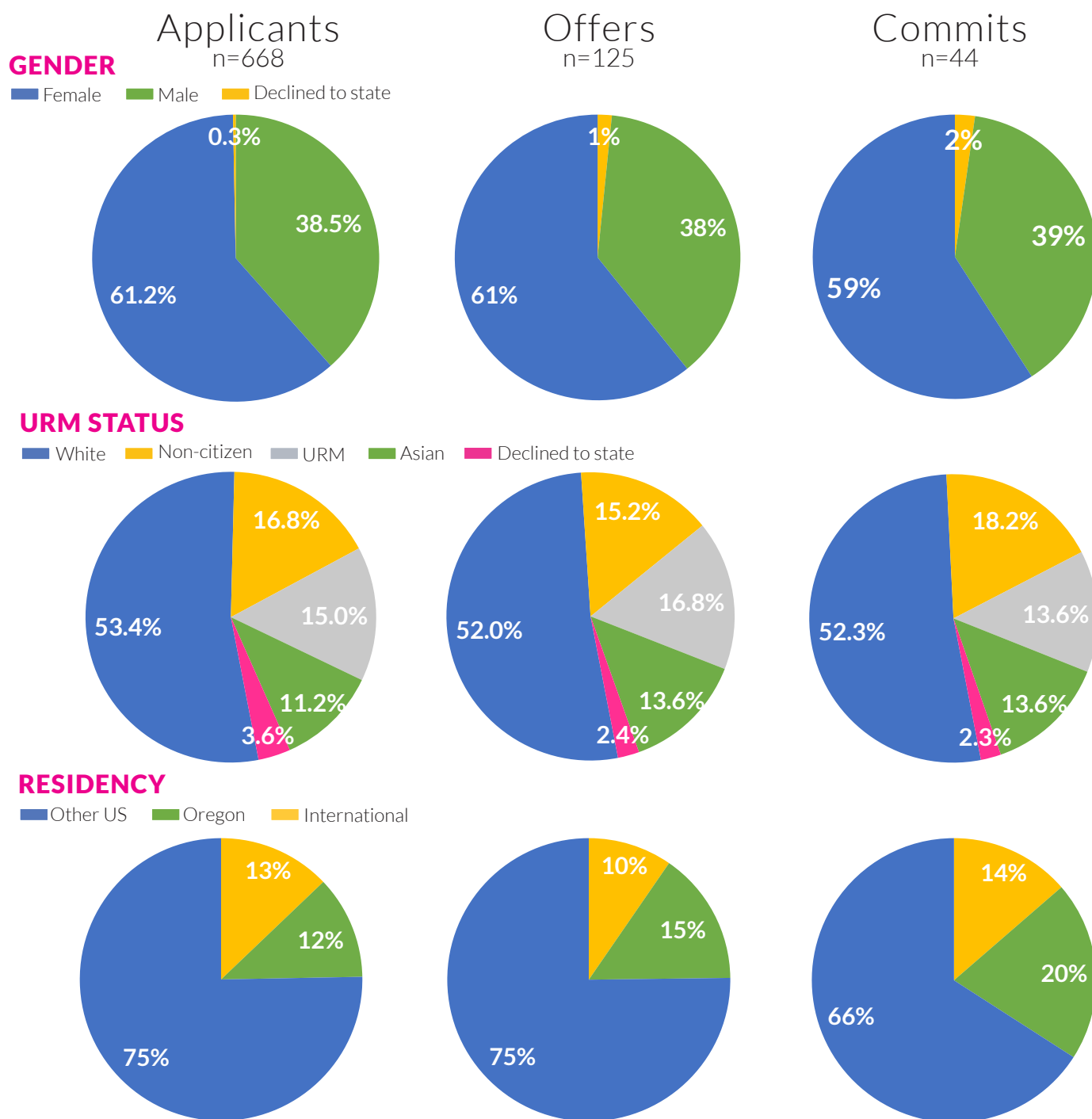


FIGURE 4: Average Cumulative Undergraduate GPAs

Cumulative undergraduate GPAs are calculated using the reported GPA of each undergraduate institution an applicant reported attending.

