



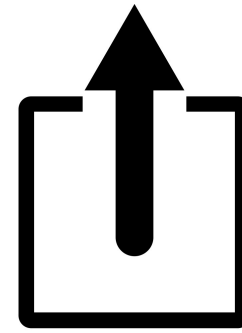
Building Safe and Healthy Communities
for Individuals and Families

TOGETHER WE ARE STRONGER

COMMUNITY INITIATIVES:

Supporting Families
with Prevention and
Recovery Resources

Pam Pearce
Community
Organizer/Co-Founder
Pamflorapearce@gmail.com



COMMUNITY
LIVING ABOVE



Recovery
HighSchool
Initiative



PREVENTION IS THE CURE...

*Action
taken to
decrease
the
chance of
getting a
disease or
condition.*

...until we
understand
what real
prevention is,
prevention
needs to be
**knowing
where to go
for help.**

Substance use/mental health disorders can have a powerful effect on the health of individuals, their families, and their communities. It is estimated that by 2020, mental and substance use disorders will surpass all physical diseases as a major cause of disability worldwide. **SAMHSA**

IDEAS AND TOOLS THAT TOOK US FROM AWARENESS TO ACTION

- **Understanding the need (awareness)**
 - *Highest % of Teenage Drug Users – Oregon #3
 - *Highest % of Adult Drug Users – Oregon #1
 - *Fewest Substance Use Treatment Facilities per 100,000 drug users
- **(Action)** Generation Found, a documentary profiling a recovery high school and alternative peer group in Houston, TX
 - Coalition of the willing
 - APG, Family Inspired Recovery opens May 2019
 - Harmony Academy opens September 2019

Data used to create this ranking were collected from U.S. Census Bureau, Bureau of Labor Statistics, Centers for Disease Control and Prevention, Federal Bureau of Investigation, Substance Abuse and Mental Health Services Administration, U.S. Drug Enforcement Administration, Child and Adolescent Health Measurement Initiative, Project Know, the Pew Charitable Trusts, Guttmacher Institute, OHS Health & Safety Services, CVS Health, IMS Institute for Healthcare Informatics and Recovery.org.

LANDSCAPE , HOW DID WE GET HERE

- 10% of adolescents who need treatment actually receive it
- 90% of adults with addiction began using before age 18
- Genetics and Environment
- Effective intervention for substance use disorders (SUDs) is a matter of critical importance to the public health of our nation.
- Education, Awareness, Resources, Support
 - Shame and Stigma Barriers
 - Family systems
 - Workforce
 - Healthcare
- Systems are broken or don't exist

AWARENESS TO ACTION

Creating a Continuum of Care

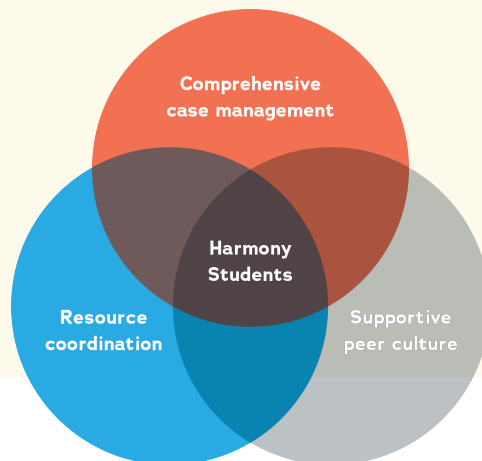
- Finding or creating ideas, tools, forums, events that can help prevent, mitigate negative outcomes, or offer support.
- SUDs are manageable, and recovery is possible when the individual and family have the supports and environments they need to thrive.
- Recovery-Oriented System of Care (ROSC) a coordinated network of community-based services and supports that is person-centered and builds on the strengths and resilience of individuals, families and communities to achieve abstinence and improved health, wellness and quality of life for those with or at a risk of alcohol and drug problems” (SAMHSA).

OREGON RECOVERY HIGH SCHOOL INITIATIVE

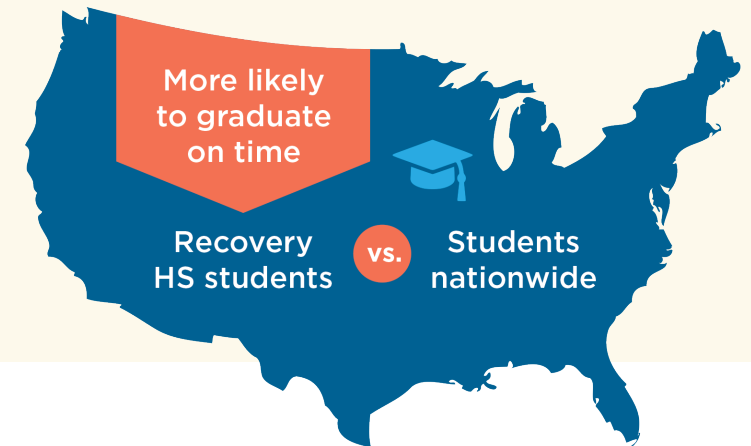
HARMONY ACADEMY, OREGON'S FIRST RECOVERY HIGH SCHOOL

The mission of Harmony Academy is to provide a safe, sober and supportive gold standard education for youth in recovery, where they can develop the skills and strengths needed for personal, academic, vocational and community success.

- **70%** of youth are clean & sober 1 year after enrolling in recovery HS
- **0.4 HIGHER** GPAs in college after graduating from a recovery HS vs. average undergrad



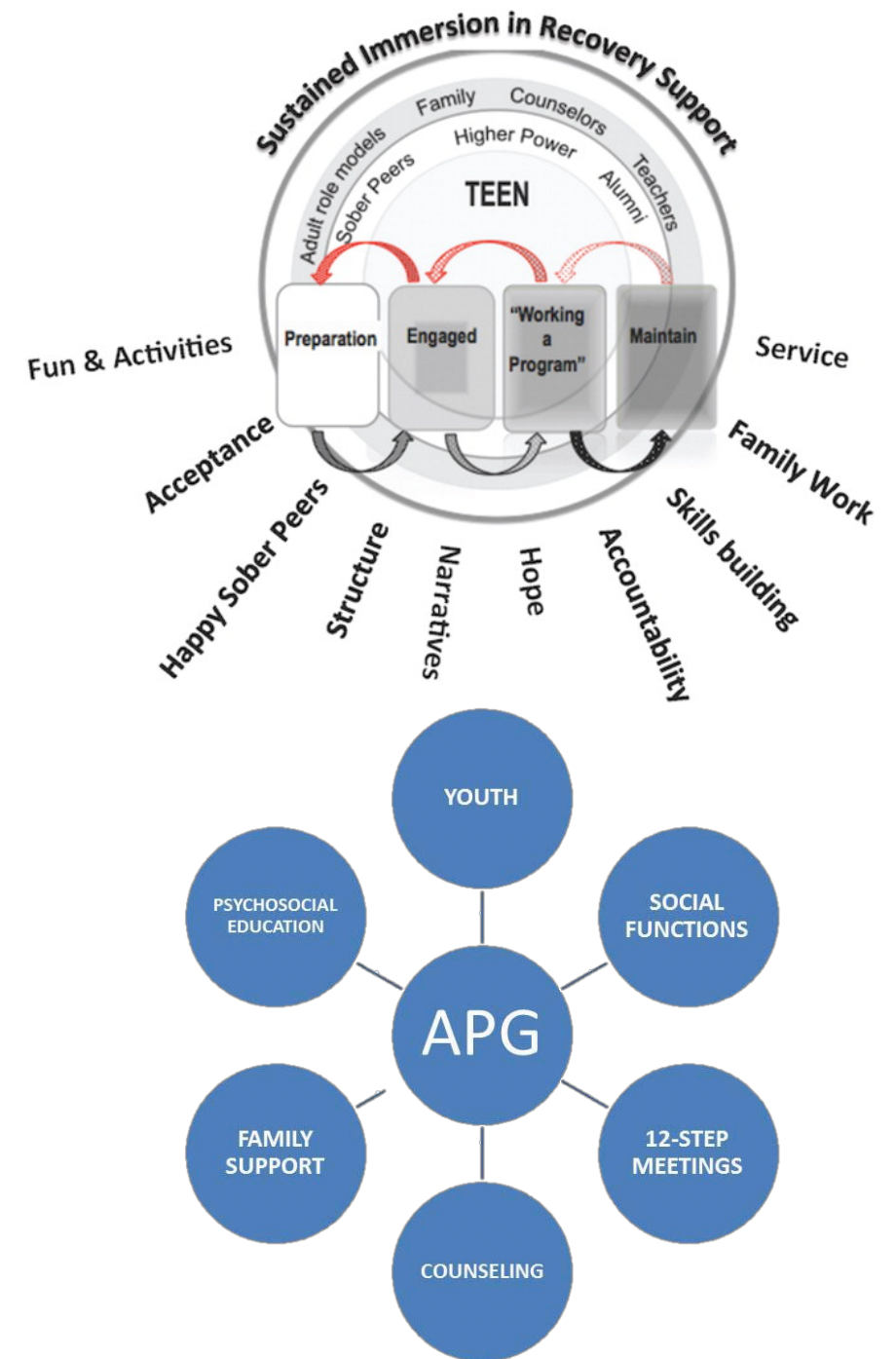
One of the
highest rates
of adolescent
substance misuse
in the U.S.



FAMILY INSPIRED RECOVERY

AN ALTERNATIVE PEER GROUP (APG) MODEL ENTHUSIASTIC RECOVERY

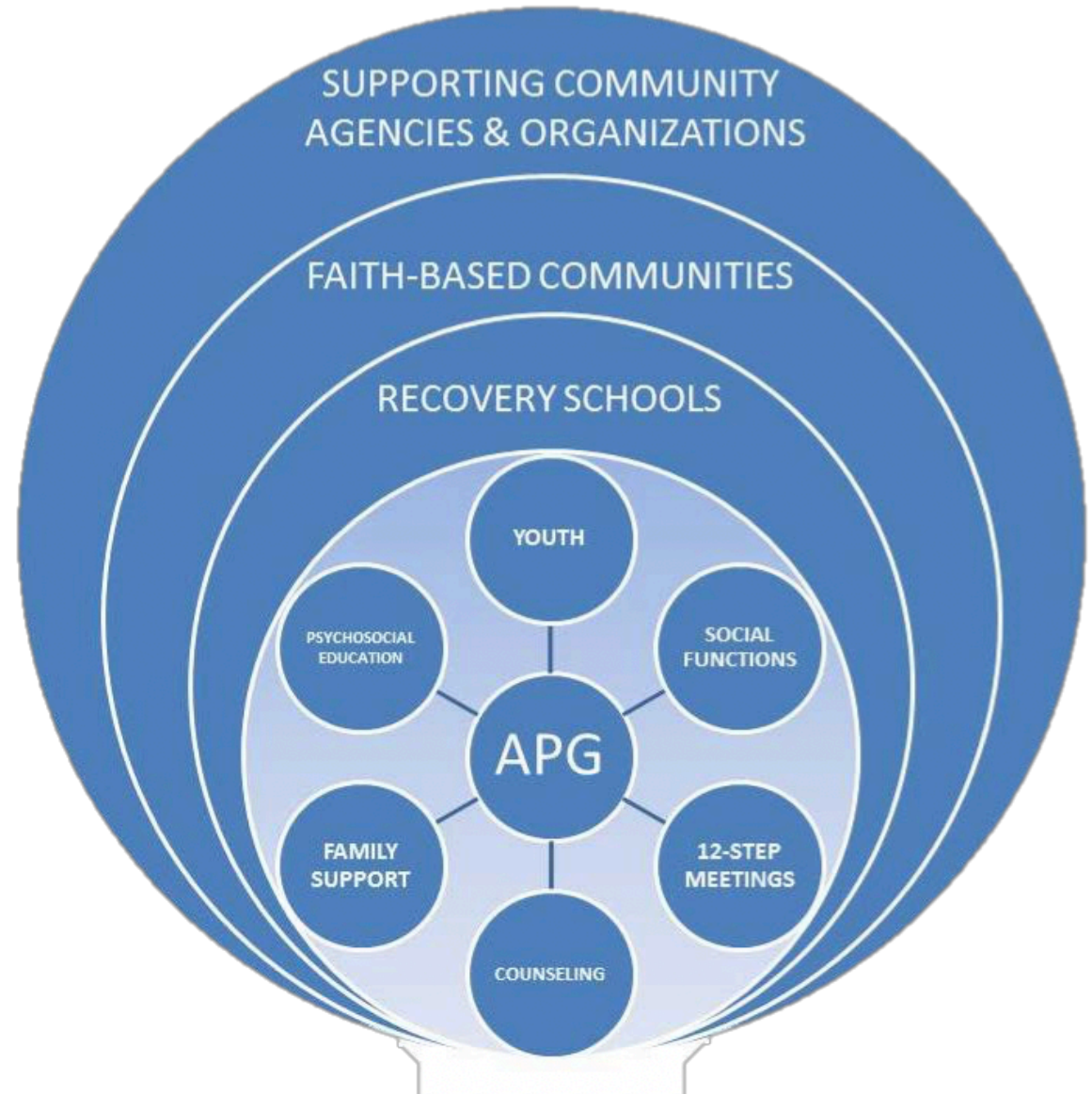
- A promising adolescent recovery support model that includes a focus on prevention, early intervention, and recovery management.
- Congruent with principles of the ROSC continuum.
- Promote recovery in youth by integrating recovering peers and prosocial activities into evidence - based clinical practice.



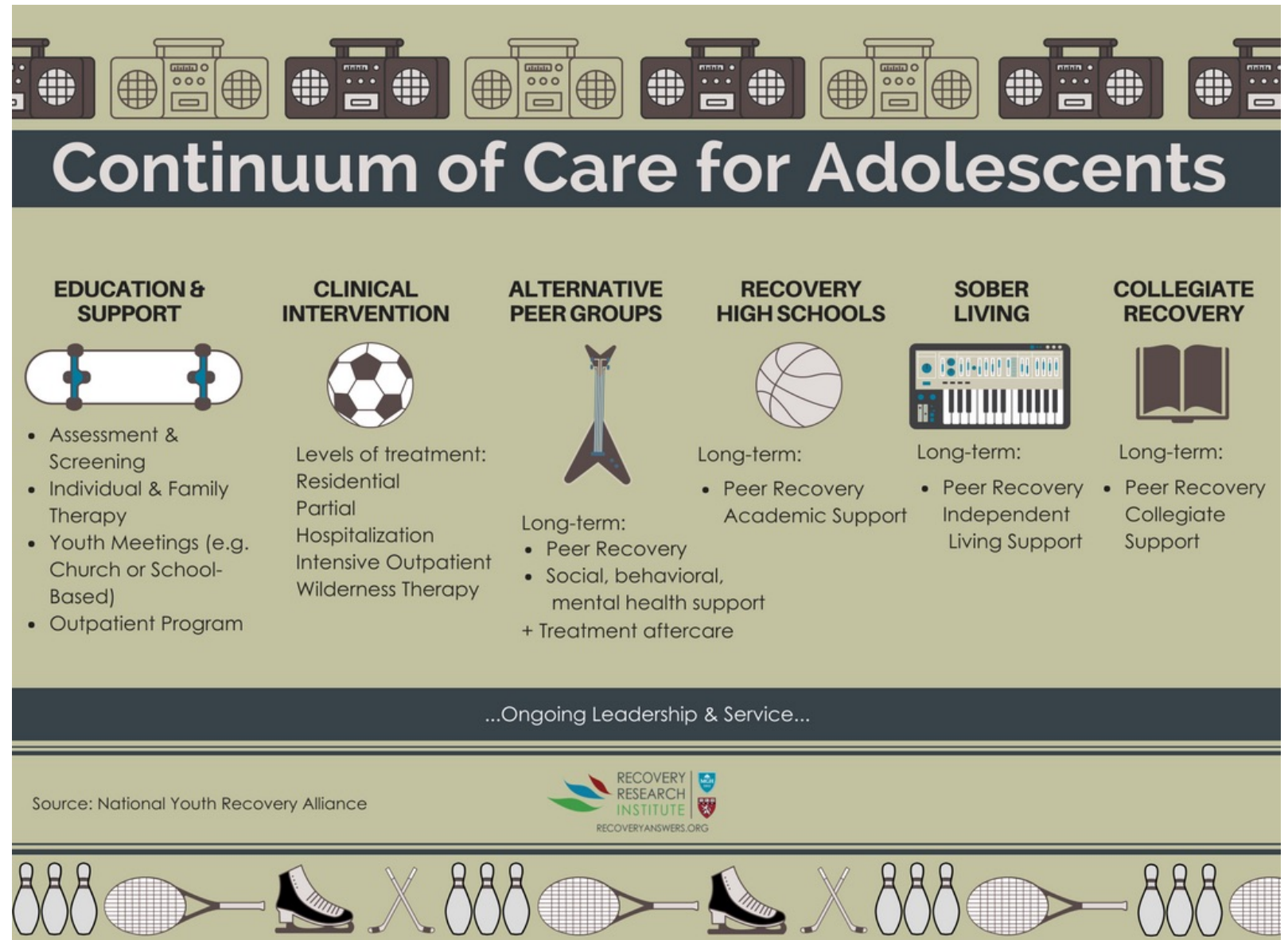
RECOVERY-ORIENTED SYSTEMS OF CARE (ROSC)

APG Model within ROSC

- Integrated systems of services that build resilience and help individuals to achieve long-term recovery
- Should include
 - Clinical services
 - Continuing care elements
 - Peer support
 - Linkage to other recovery support services



CONTINUUM OF CARE



The background features two large, solid orange geometric shapes. On the left, a triangle points towards the center. On the right, a trapezoid is positioned, also pointing towards the center. The text is centered between these two shapes.

Questions & Answers