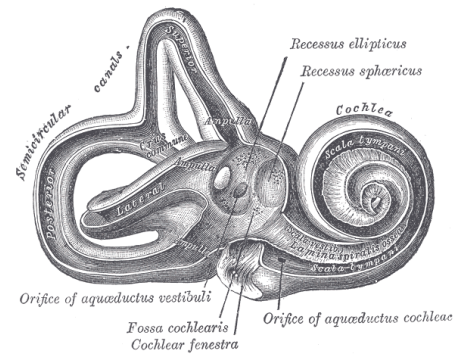


NEUS 639:

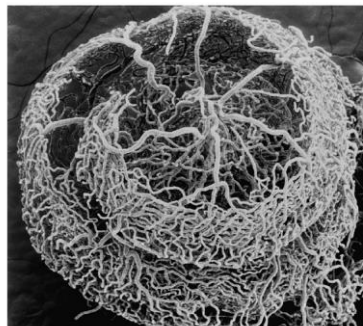
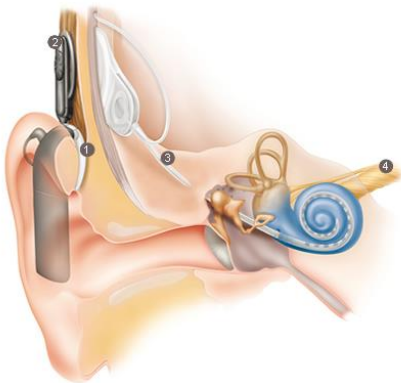


# Topics in the Auditory System

Winter Quarter (Jan. 9-Mar. 8)

Tuesdays and Thursdays, 1:15-2:45 pm

RJH 5501



The course will provide a broad overview of the auditory system from peripheral to central function, and from basic science to clinical applications. The focus will be on emerging (clinically relevant and fundable) topics in the auditory system and associated disorders.

Each week will focus on a specific topic and be led by 1-2 faculty experts. Lectures will alternate with student-led journal paper discussions. The syllabus is available at:

[http://www.ohsu.edu/xd/health/services/ent/research/ohrc-research/ohrc\\_education.cfm](http://www.ohsu.edu/xd/health/services/ent/research/ohrc-research/ohrc_education.cfm)

For more information, contact the course directors, Lina Reiss ([reiss@ohsu.edu](mailto:reiss@ohsu.edu)) and Larry Trussell ([trussell@ohsu.edu](mailto:trussell@ohsu.edu)), or the course administrator, Liz Lawson-Weber ([lawsonl@ohsu.edu](mailto:lawsonl@ohsu.edu))