



The Oregon Prescription Drug Monitoring Program

Rural Health Conference | [Oct. 4, 2018](#)





Presentation Outline

- OR PDMP History and Overview
- Relevant Statistics
 - PDMP trends
 - Prescribing trends
- Enhancements
- Anticipated changes
- Oregon PDMP Integration Initiative



PDMP: Overview

- The Oregon Prescription Drug Monitoring Program (PDMP) is a tool to help healthcare providers and pharmacists provide patients better care in managing their prescriptions
- Comprehensive record of controlled substances dispensed in Oregon.
- 24/7 access
- Authorized and authenticated users only
- Available to prescribers, pharmacists, medical and pharmacy directors, delegates



PDMP: Purpose

- Provide data on controlled substance prescriptions to improve patient safety and health
- Improve collaboration between health care practitioners
- The purpose of the PDMP is not to punish patients or practitioners.

PDMP: Overview Cont.

- Captures approx. 6-7 million prescriptions annually
 - Patient , prescriber, dispenser, and drug info captured and sent to PDMP
- 4,000 prescribers write 80% of scheduled substance prescriptions
- Opioids (e.g. hydrocodone, oxycodone) account for ~50% of controlled substance prescriptions
- Benzodiazepines 2nd most frequent prescription



OR PDMP vs Other States

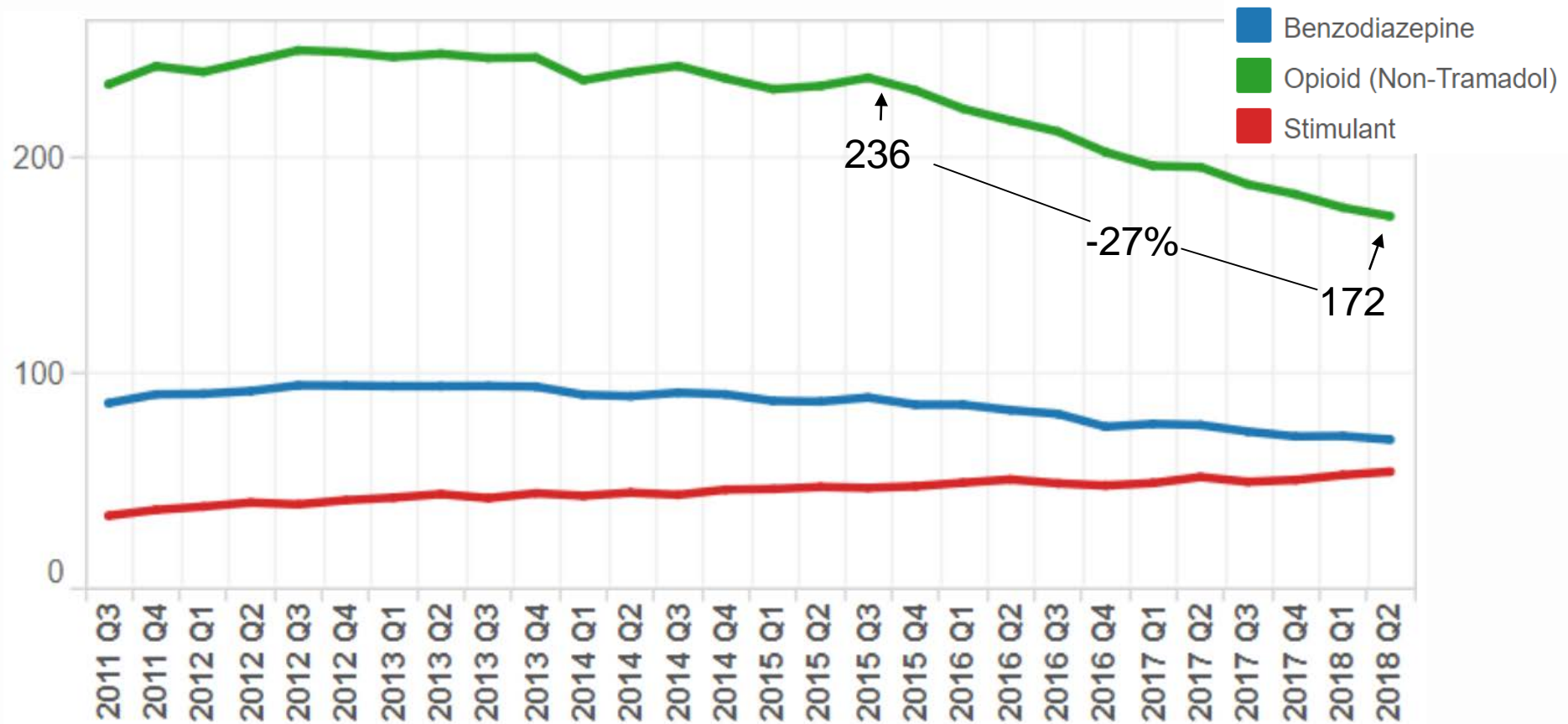
- All 50 States have a PDMP, philosophy of implementation and use vary
- Most are operated by Pharmacy Boards or Department of Health
- Oregon collects schedule II-IV and drugs of concern. 28 states collect II-V



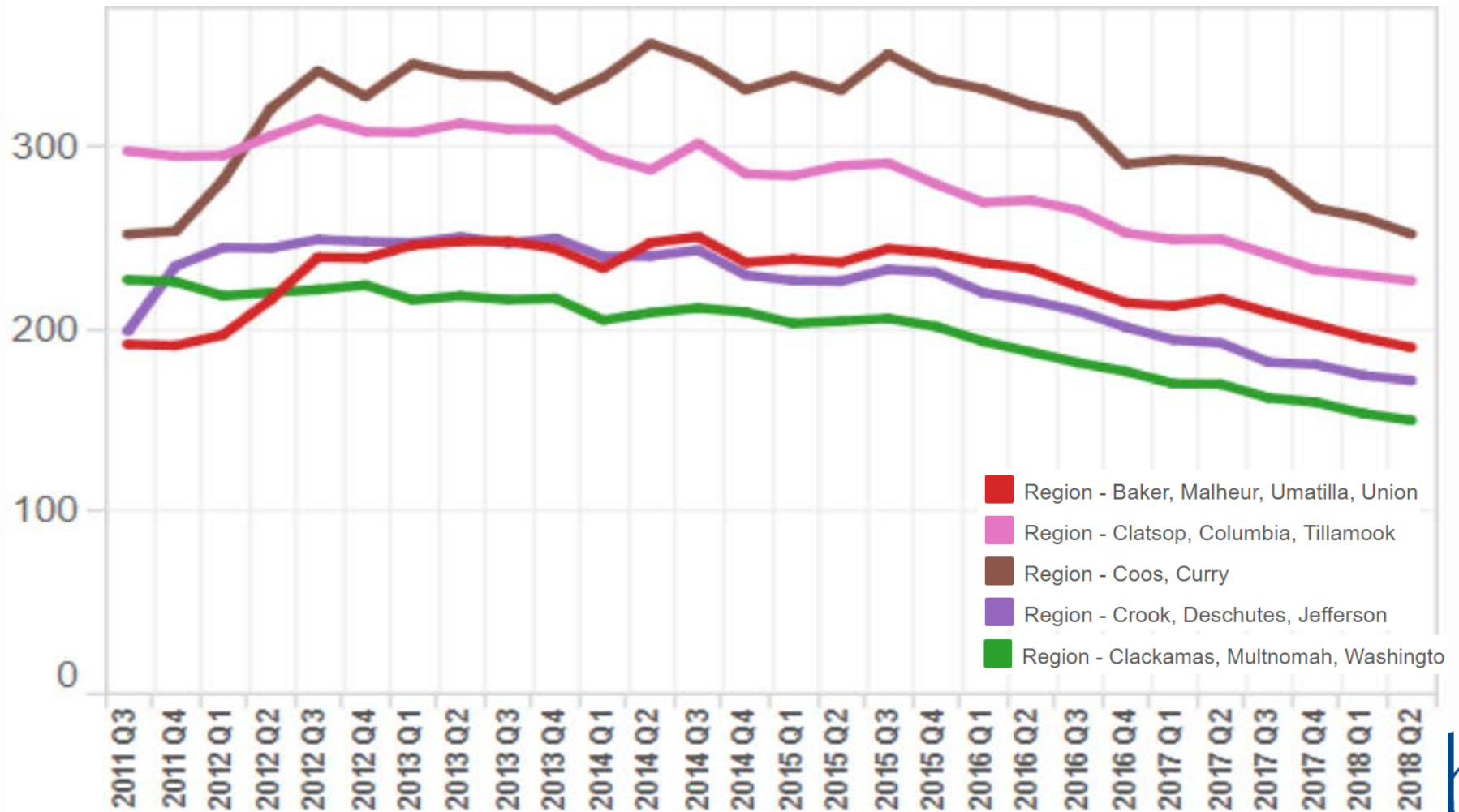
OR PDMP vs Other States cont.

- Most states including Oregon are funded by licensing fees. 15 states funded by general state revenue.
- 11 states including Oregon do not have any mandates to use PDMP
- 26 states now use PDMP to generate prescriber report cards, Oregon does not.

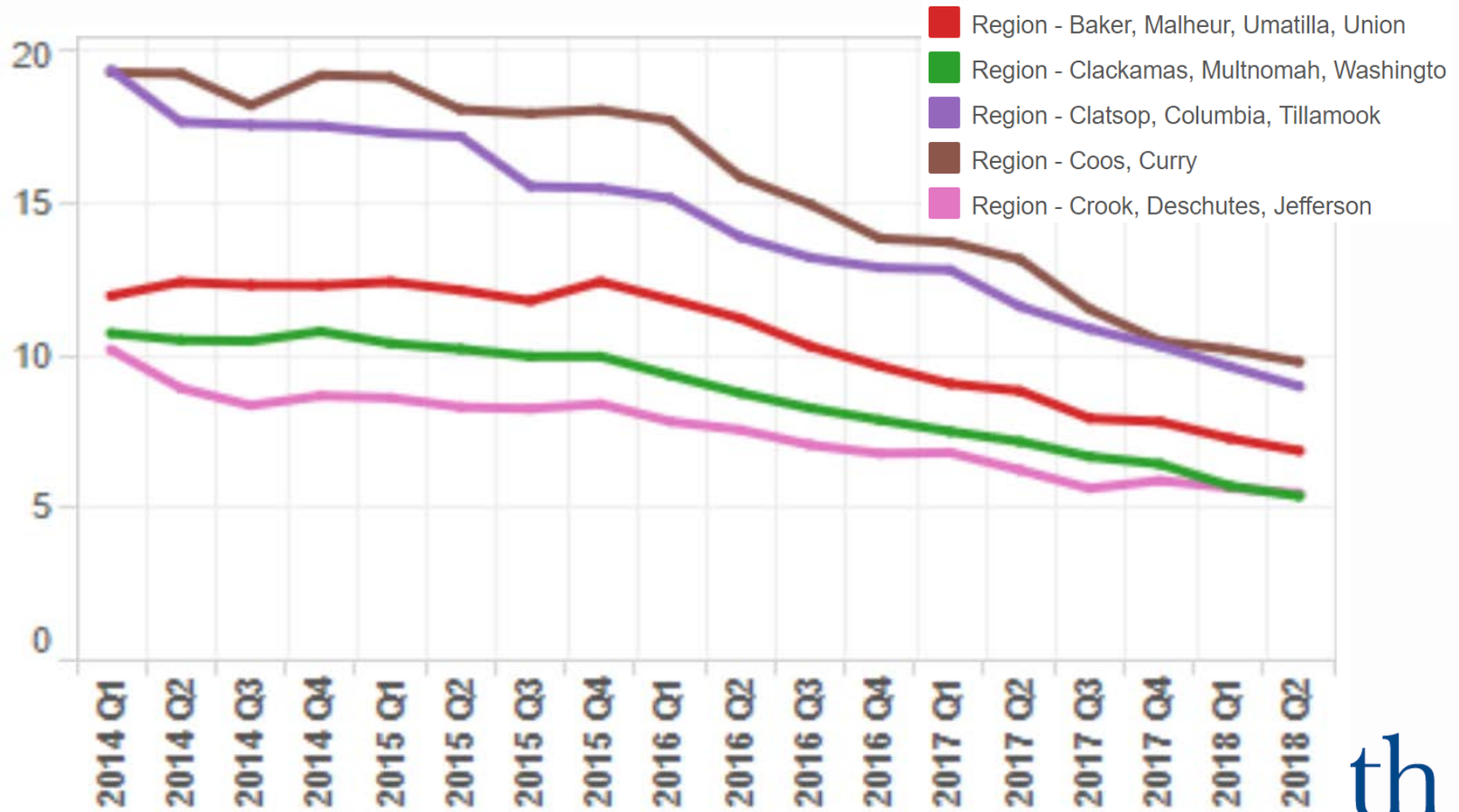
Controlled Substance Prescribing, Prescription Fills per 1,000 Residents



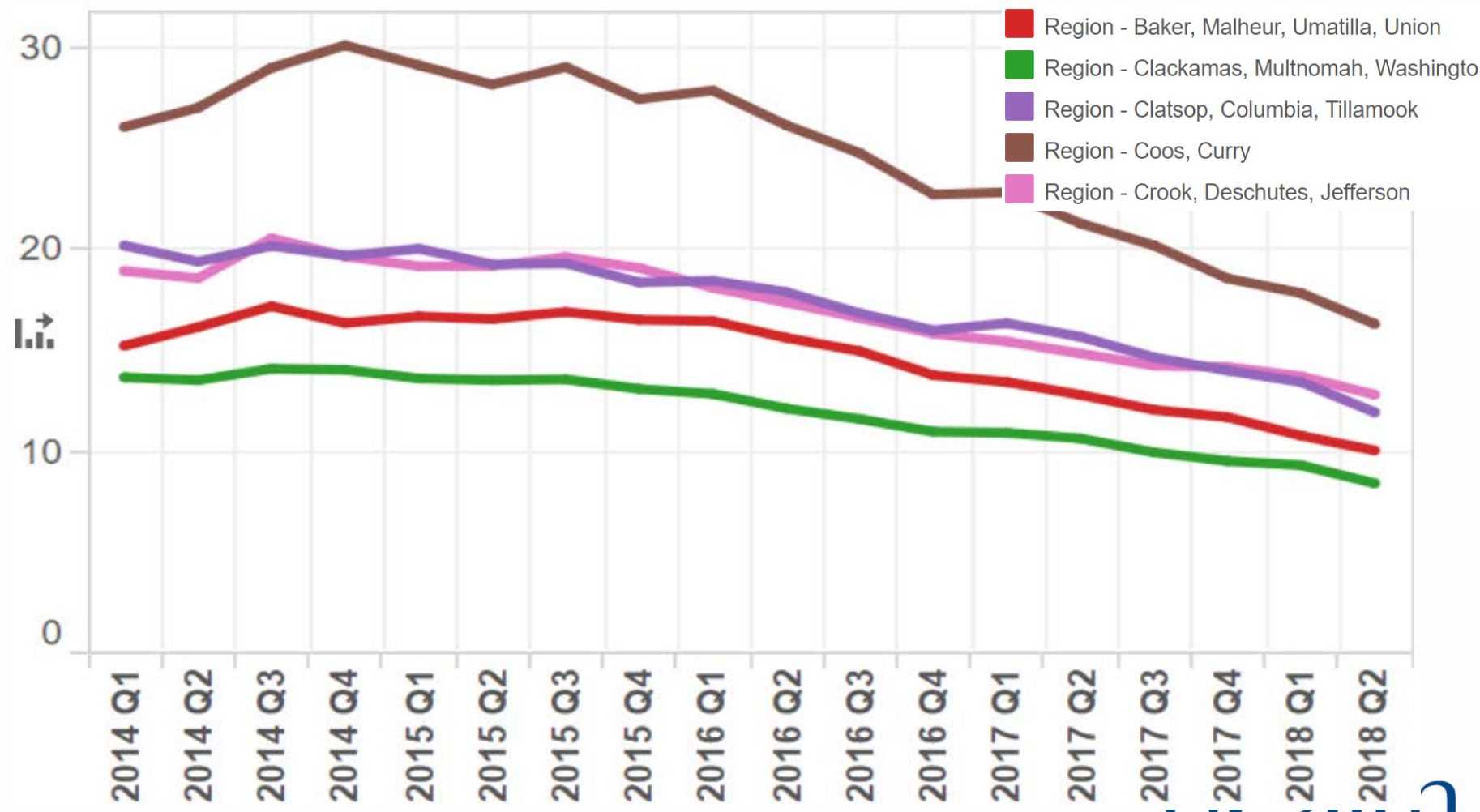
Opioid Prescription Fills per 1,000 Residents, by Region



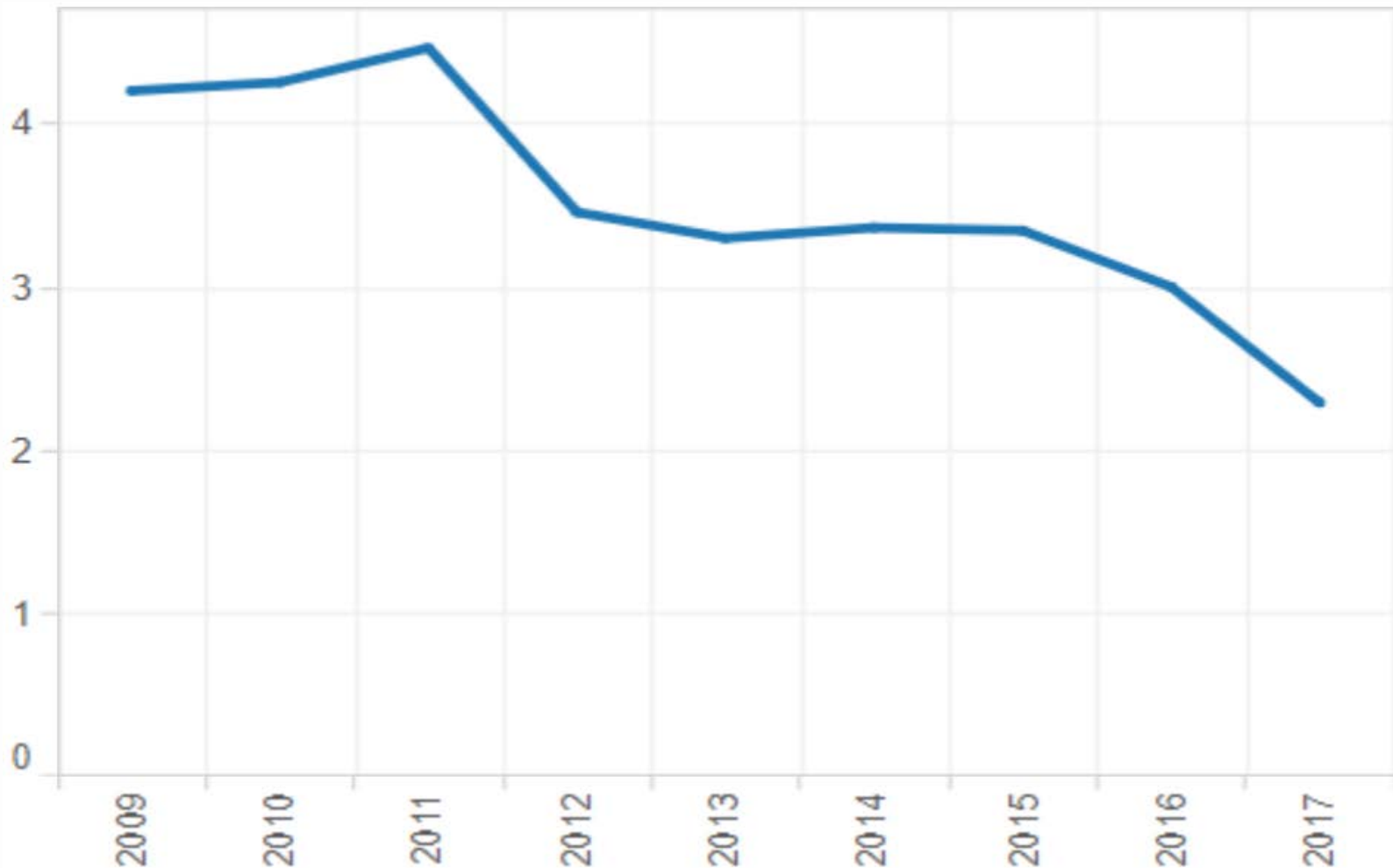
OR Risky Prescribing: >90 MED from a single fill. Per 1,000 Residents



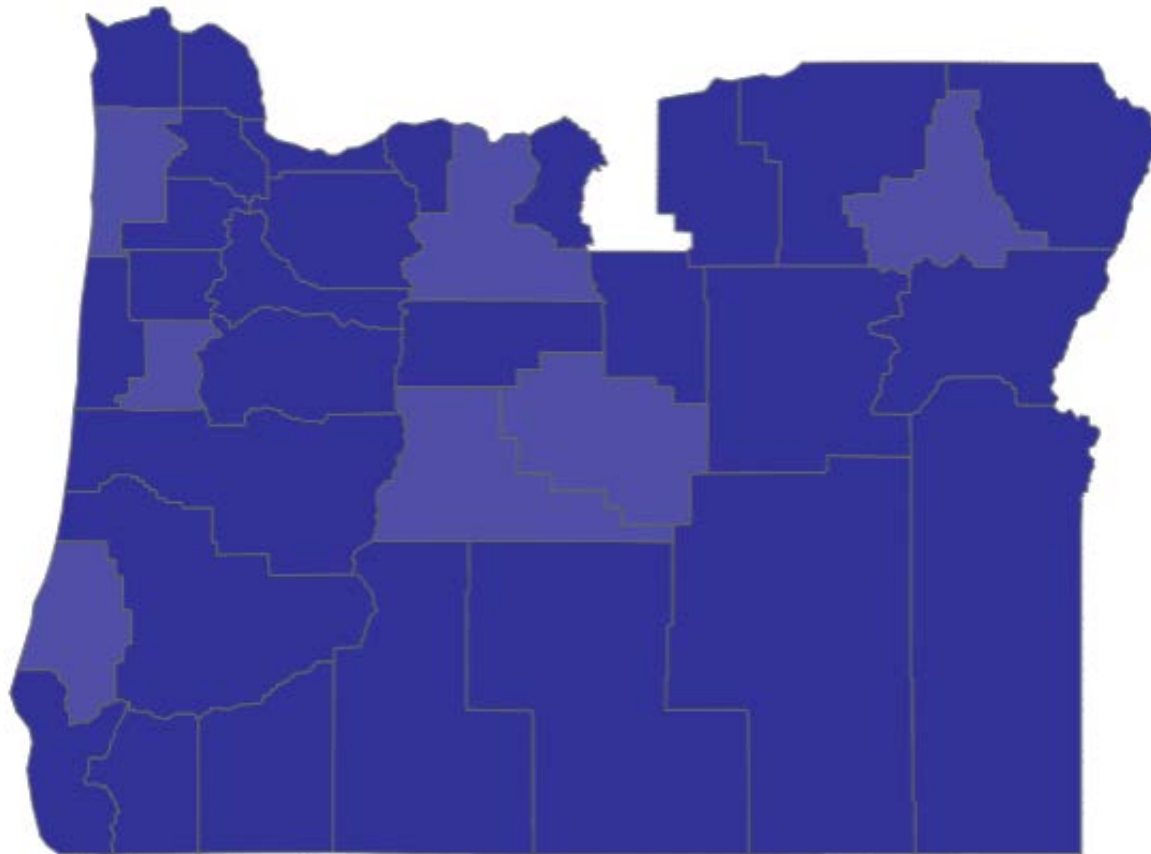
OR Risky Prescribing: Overlapping opioid and benzodiazepine per 1,000 Residents



Oregon Statewide Pharmaceutical Opioids Fatal Overdose, Rate per 100K



PDMP Enrollment among top prescribers, Sept 2018



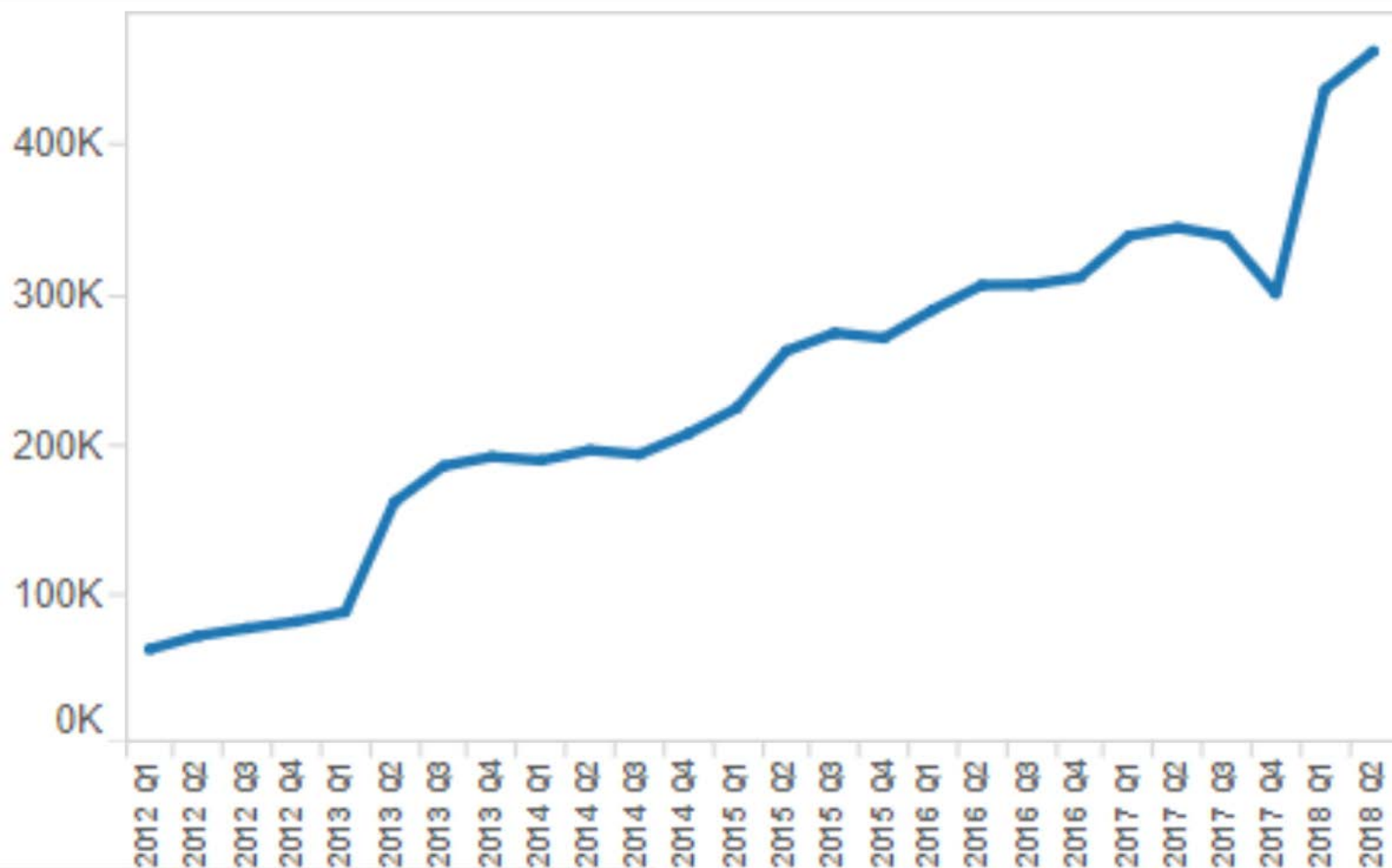
- 94% of top prescribers are enrolled.
- 75% of all prescribers are enrolled

Efforts to increase enrollment

- Communications from licensing boards and associations
- Direct outreach from local health department staff
- Collaboration between OHA and healthcare entities.



PDMP Queries by Quarter



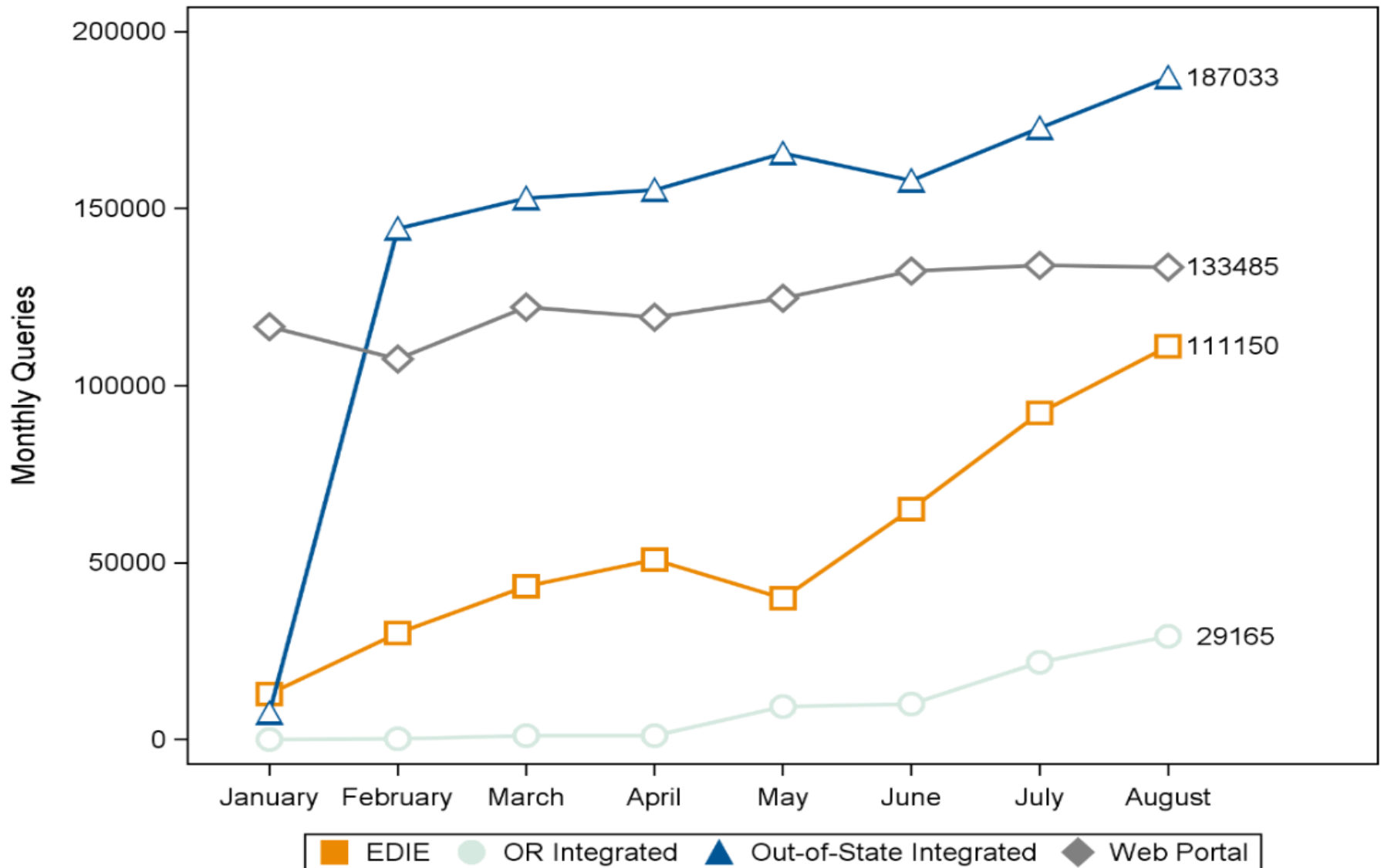
PDMP User Survey Findings

- 81% of respondents agreed or strongly agreed that the PDMP has improved the safety of their patients.
- 78% of respondents agreed or strongly agreed that the PDMP has improved their management of prescriptions for controlled substances.
- 14% of respondents access the PDMP daily; 25% weekly; 24% monthly.
- Top barriers to use reported were time (72%), forgotten passwords (59%)

PDMP Enhancements List

- PDMP Prescribing Practice Review Subcommittee
- Interstate data sharing
 - ID, TX, NV, KS, ND actively sharing.
 - CA passed legislation to allow 2018, implement by July 2020.
 - WA working to overcome hurdles.
- Medical and Pharmacy Director Access
 - Custom search option
- Health IT System Integration

Type of PDMP Query



Anticipated Changes

- Governors taskforce will be making recommendations for the next legislative session.
 - Contact your board or association with recommended changes



The Oregon PDMP Integration initiative

IN PARTNERSHIP WITH

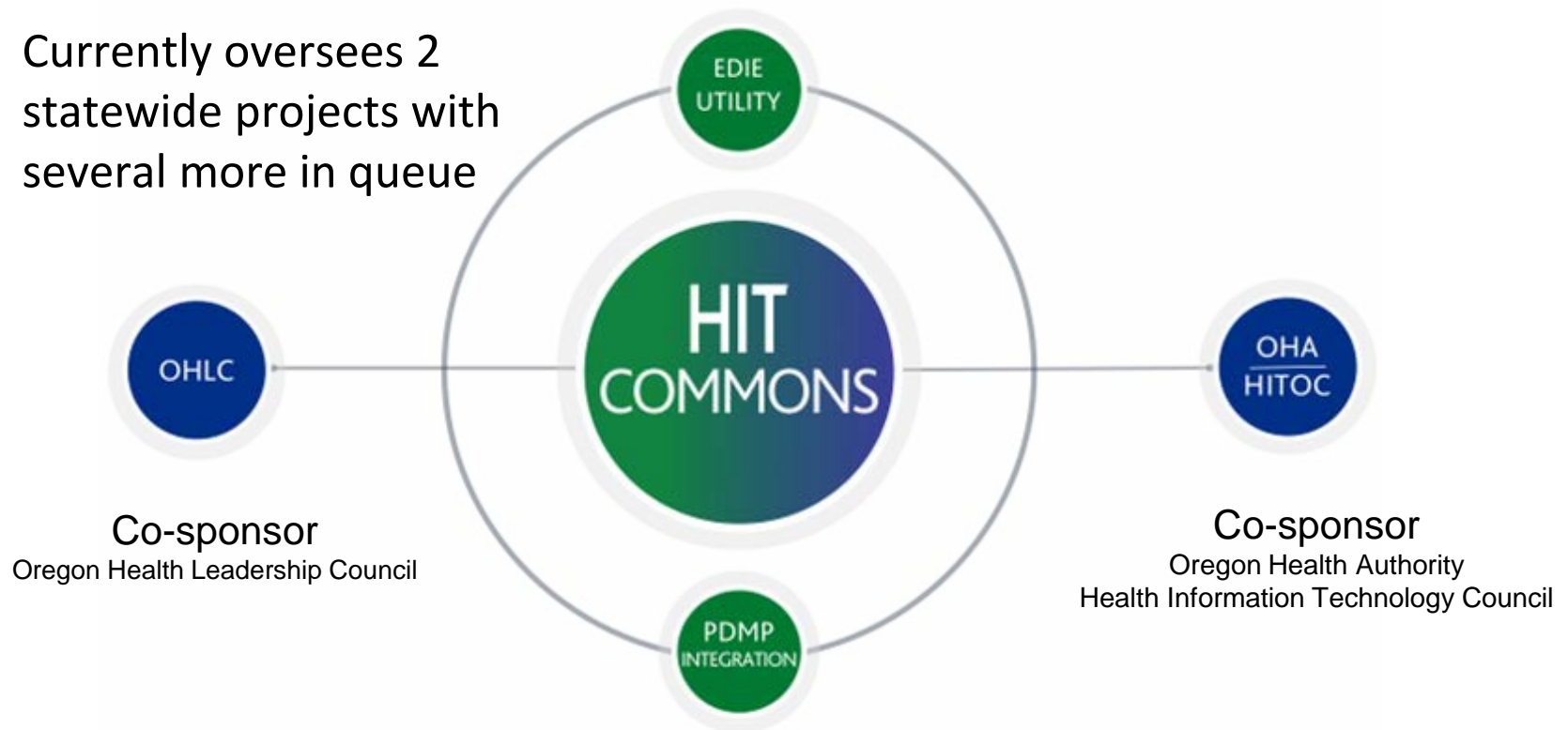
OREGON HEALTH
LEADERSHIP COUNCIL

Oregon
Health
Authority

HIT Commons

*A shared public/private governance partnership to
accelerate and advance HIT in Oregon*

Currently oversees 2
statewide projects with
several more in queue

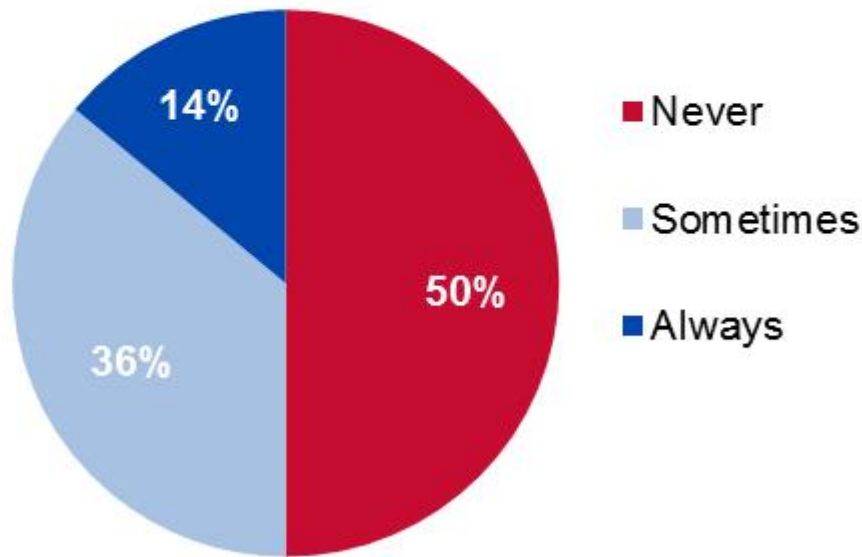


Oregon PDMP Integration Initiative

- Provides access to PDMP data **within the electronic health record**
- July 2018, OHLC negotiated a **statewide contract** for PDMP integration with goals to:
 - ***Increase*** use of PDMP data at the point of care
 - ***Improve*** access and prescriber efficiency
 - ***Minimize*** changes to current workflow
 - ***Optimize*** prescribing practices

Problems Accessing the PDMP Database

How Often do Physicians Check the State PDMP when Prescribing Controlled Substances?



“The fact that it’s a **separate browser** and a **separate login** is probably partly, more than partly, it’s probably entirely why I don’t bother checking it routinely.”

—MD study participant

<https://onlinelibrary.wiley.com/doi/epdf/10.1111/acem.12905>

The Benefits to Prescribers

- **Faster**

One-click access from within your electronic workflow without needing to enter and search for your patient

- **Simpler**

Allows prescribers and pharmacists to retrieve PDMP data without the need to memorize passwords or log into a different system

- **On Demand**

Utilize PDMP data at the point of care, for help in prescription and clinical decision making

Up to **4 mins/patient**
time savings reported



“Logging into one system allows for seamless access to **the right information at the right time** - thus ensuring appropriate opioid prescriptions make it into circulation and **greater coordination** among healthcare providers. If necessary, this **single system** will also help providers treat potential opioid addiction with more effective solutions.”

Lee David Milligan, MD

Asante, VP/CMIO

Member, OHA's Oregon Opioid Prescribing Guidelines Task Force

PDMP Integration Funding

82%

of costs covered by
federal & state funds

Remaining costs through
shared funding model



Future assessments to be included in HIT Commons membership fees.

Retail pharmacies also contribute a fee per location.

Additional Funding for PDMP Integration

Your organization may qualify for assistance if you meet the following criteria:



Still using paper notifications for EDIE



Type A or B rural hospitals



Interested in integrating the PDMP and/or electronic version of EDIE

For more information contact OAHHS:

Katie Harris kharris@oahhs.org or Andy Van Pelt avanpelt@oahhs.org



PDMP Integration Steering Council

Composition

- 15 [members](#) from health systems, CCOs, BH, pharmacy, dental and rural health
- Reports to HIT Commons Board

Role of members

- Guide implementation and roll-out strategies
- Develop [metrics of success](#)
- Monitor performance to assess and evaluate value
- Remove project barriers
- Promote adoption and spread of PDMP integration



Implementation Recommendations

- Implement by EHR vendor, then 1st come, 1st served
- Partner with other state associations
 - OAHHS, OMA, Office of Rural Health
- Commission PDMP Steering Rural Subgroup
 - Addresses unique challenges and opportunities for support
- Evaluate group purchasing with vendors of CAH's

PDMP Integration Success Metrics

	2018	2019	2020
Increase PDMP Utilization	30% increase	25% increase	20% increase
Meet Minimum Participation Thresholds	3500 prescribers 1 pharmacy chain	13,500 prescribers 3 pharmacy chains	16,000 prescribers 4 pharmacy chains
Improve Patient Outcomes	Reduction in # of acute to chronic opioid users*		
Improve Access to PDMP	TBD post recent PDMP Prescriber survey		

*Definitions from Oregon PDMP available: www.oregon.gov/oha/ph/PreventionWellness/SubstanceUse/Opioids/Pages/data.aspx

Preparing for PDMP Integration



Ensure all users have an active PDMP account



Sign & return required legal agreements



Complete the PDMP Integration Form

All materials accessible on the OHLC PDMP Integration web pages:

www.orhealthleadershipcouncil.org/pdmp-integration

PDMP Integration Request Form



Oregon PDMP Integration Request Form

Completing this form is a requirement for PDMP Integration. Additional legal documents must be signed and returned as well before your request will be processed.

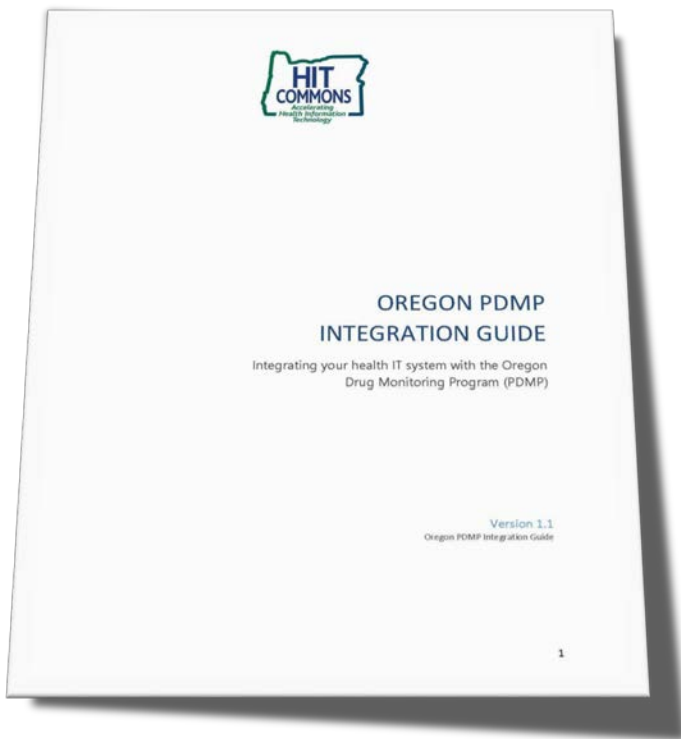
Additional PDMP Integration required materials and information can be found [here](#).
Questions? Contact pdmp@hitcommons.org

* **Business Information**

Company Name	<input type="text"/>
Address	<input type="text"/>
City/Town	<input type="text"/>
ZIP/Postal Code	<input type="text"/>
NP or Tax ID	<input type="text"/>
Website	<input type="text"/>

- Required for interstate data sharing
- Only takes 5 minutes to complete
- Have ready:
 - Primary & IT contact information
 - EHR vendor information
 - Prescriber & site counts

The New Request Process



Comprehensive guide to PDMP Integration:

- Link to new online [request form](#)
- Updated legal agreements
 - Appriss EULAs
 - OHA Gateway Agreement
- Access & Eligibility Criteria
- Technical & Implementation Support
- FAQs



PDMP Integration Legal Agreements

- Both OHA and Appriss require contracts for access

Oregon Gateway User Agreement

Allows access to PDMP data through your EHR

Appriss End User License Agreements (EULA)

Provides access to gateway information and analysis services for prescribers **or** retail pharmacies

- We recommend legal review as early as possible as this is frequently a barrier to timely application completion

Early Wins with EDIE/PDMP Integration

- EDIE and PDMP Integration targeted as first priority
- PDMP data gets “pushed” when needing predefined risk criteria
- Nearly all hospital EDs with integrated EDIE now have PDMP
- Still working closely with vendor to onboard late adopters
- PDMP usage has steadily increased as ED integration continues to rollout
- Reports of improved satisfaction from prescribers

"In a complex information system where providers are seemingly endless clicks away from critical information, integration of the PDMP data not only **improves patient care**, but also helps tackle provider "click fatigue."

When the relevant information you need is **all in one place** and easily **accessible**, it translates into improved and efficient care. The goal is to streamline the process so everyone benefits."

Saleen Manternach, MD, FACEP

Emergency Medicine, Oregon Health & Science University



PDMP Integration - Current Status

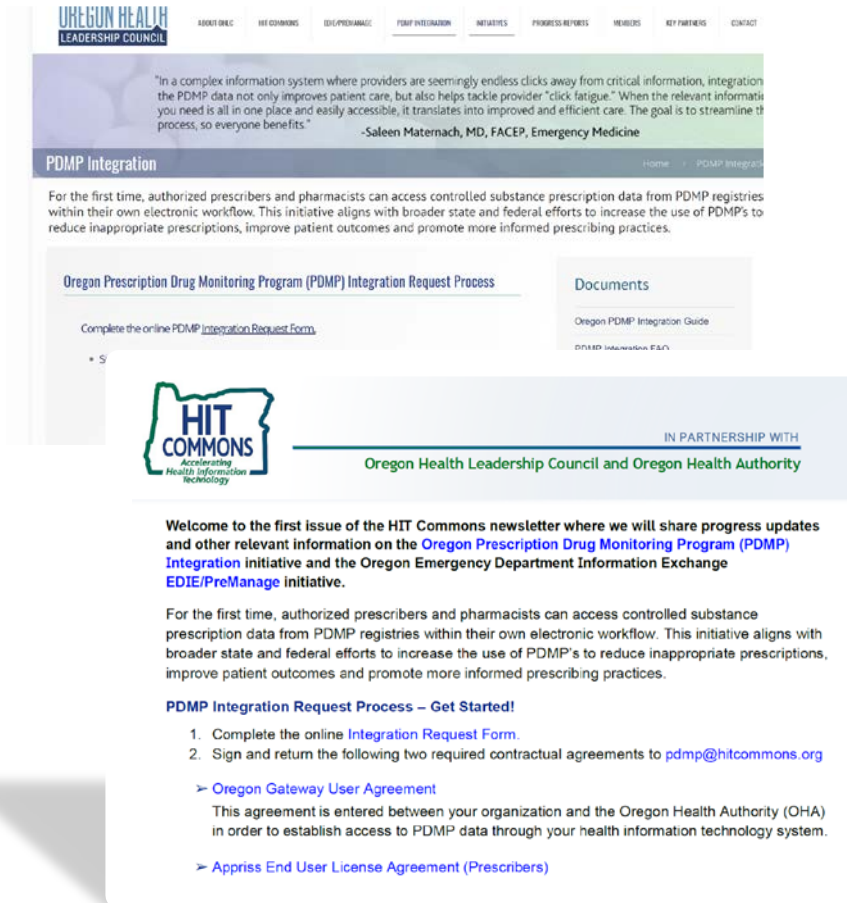
LIVE with integrated PDMP

- 700+ Prescribers
- 25 Emergency Departments
- Lane County (public health)
- Rogue Family Physicians
- 2 retail pharmacy chains
 - Walmart
 - Providence (Oregon)

IN PROGRESS integrating PDMP

- First entities (post-statewide contract) working on integration:
 - The Portland Clinic
 - Willamette Valley Medical Center
 - OCHIN
 - Reliance eHealth Collaborative
 - CCOs Regional Health Information Collaborative (RHIC)
- 14 additional applications in queue

Outreach and Communication Strategies



The screenshot shows the Oregon Health Leadership Council website. The header includes the logo and navigation links: ABOUT ORHC, HIT COMMONS, EDIE/PreManage, PDMP INTEGRATION, INITIATIVES, PROGRESS REPORTS, NEWS, KEY PARTNERS, and CONTACT. The main content area features a quote from Saleen Maternach, MD, FACEP, Emergency Medicine, about the benefits of PDMP integration. Below this, the 'PDMP Integration' section explains that authorized prescribers and pharmacists can now access controlled substance prescription data from PDMP registries within their own electronic workflow. A sidebar on the right lists 'Documents' including the 'Oregon PDMP Integration Guide' and 'OHAED Information FAQ'. The bottom of the page features the HIT Commons logo and a partnership statement with the Oregon Health Leadership Council and Oregon Health Authority. The main text welcomes readers to the first issue of the HIT Commons newsletter, sharing progress updates on the Oregon Prescription Drug Monitoring Program (PDMP) Integration initiative and the Oregon Emergency Department Information Exchange (EDIE/PreManage) initiative. It also provides a 'PDMP Integration Request Process - Get Started!' section with two steps: 1. Complete the online Integration Request Form, and 2. Sign and return the following two required contractual agreements to pdmp@hitcommons.org. The agreements listed are the Oregon Gateway User Agreement and the Appriss End User License Agreement (Prescribers).

OREGON HEALTH LEADERSHIP COUNCIL

ABOUT ORHC | HIT COMMONS | EDIE/PreManage | PDMP INTEGRATION | INITIATIVES | PROGRESS REPORTS | NEWS | KEY PARTNERS | CONTACT

"In a complex information system where providers are seemingly endless clicks away from critical information, integration the PDMP data not only improves patient care, but also helps tackle provider "click fatigue." When the relevant information you need is all in one place and easily accessible, it translates into improved and efficient care. The goal is to streamline the process, so everyone benefits."

-Saleen Maternach, MD, FACEP, Emergency Medicine

PDMP Integration

For the first time, authorized prescribers and pharmacists can access controlled substance prescription data from PDMP registries within their own electronic workflow. This initiative aligns with broader state and federal efforts to increase the use of PDMPs to reduce inappropriate prescriptions, improve patient outcomes and promote more informed prescribing practices.

Oregon Prescription Drug Monitoring Program (PDMP) Integration Request Process

Complete the online [PDMP Integration Request Form](#).

• S

HIT COMMONS
Accelerating Health Information Technology

IN PARTNERSHIP WITH
Oregon Health Leadership Council and Oregon Health Authority

Welcome to the first issue of the HIT Commons newsletter where we will share progress updates and other relevant information on the [Oregon Prescription Drug Monitoring Program \(PDMP\) Integration](#) initiative and the Oregon Emergency Department Information Exchange [EDIE/PreManage](#) initiative.

For the first time, authorized prescribers and pharmacists can access controlled substance prescription data from PDMP registries within their own electronic workflow. This initiative aligns with broader state and federal efforts to increase the use of PDMPs to reduce inappropriate prescriptions, improve patient outcomes and promote more informed prescribing practices.

PDMP Integration Request Process – Get Started!

1. Complete the online [Integration Request Form](#).
2. Sign and return the following two required contractual agreements to pdmp@hitcommons.org

➤ [Oregon Gateway User Agreement](#)
This agreement is entered between your organization and the Oregon Health Authority (OHA) in order to establish access to PDMP data through your health information technology system.

➤ [Appriss End User License Agreement \(Prescribers\)](#)

Venues to share PDMP Integration:

- HIT Commons eNews
- Webcasts, conferences and professional meetings
- Coordinated press releases
- Articles in health care entity eNews and publications
- Board and legislative updates



Considerations for Rural Organizations

1. Do submit an application early

- Especially *if your vendor does not* have a working integration with Appriss so we can start making a connection.
- A current list of integrated vendors can be found in the [Oregon PDMP Integration Guide](#)

2. Delegates continue to access PDMP via the state web portal

- Will *not* have integrated PDMP
- Provider workflows may change to relieve delegate of this task

Questions?

OR PDMP Integration Initiative

- General questions/information pdmp@hitcommons.org
- Laureen O'Brien, Consultant Laureen@orhealthleadershipcouncil.org
- Shelley Buettner, Consultant Shelley@orhealthleadershipcouncil.org

PDMP Access and Reporting

- Drew Simpson, PDMP Program DREW.R.SIMPSON@dhsosha.state.or.us

Rural Grant Subsidy Options

- Katie Harris, Director Rural Health & Federal Policy kharris@oahhs.org
- Andy Van Pelt, Executive VP avanpelt@oahhs.org