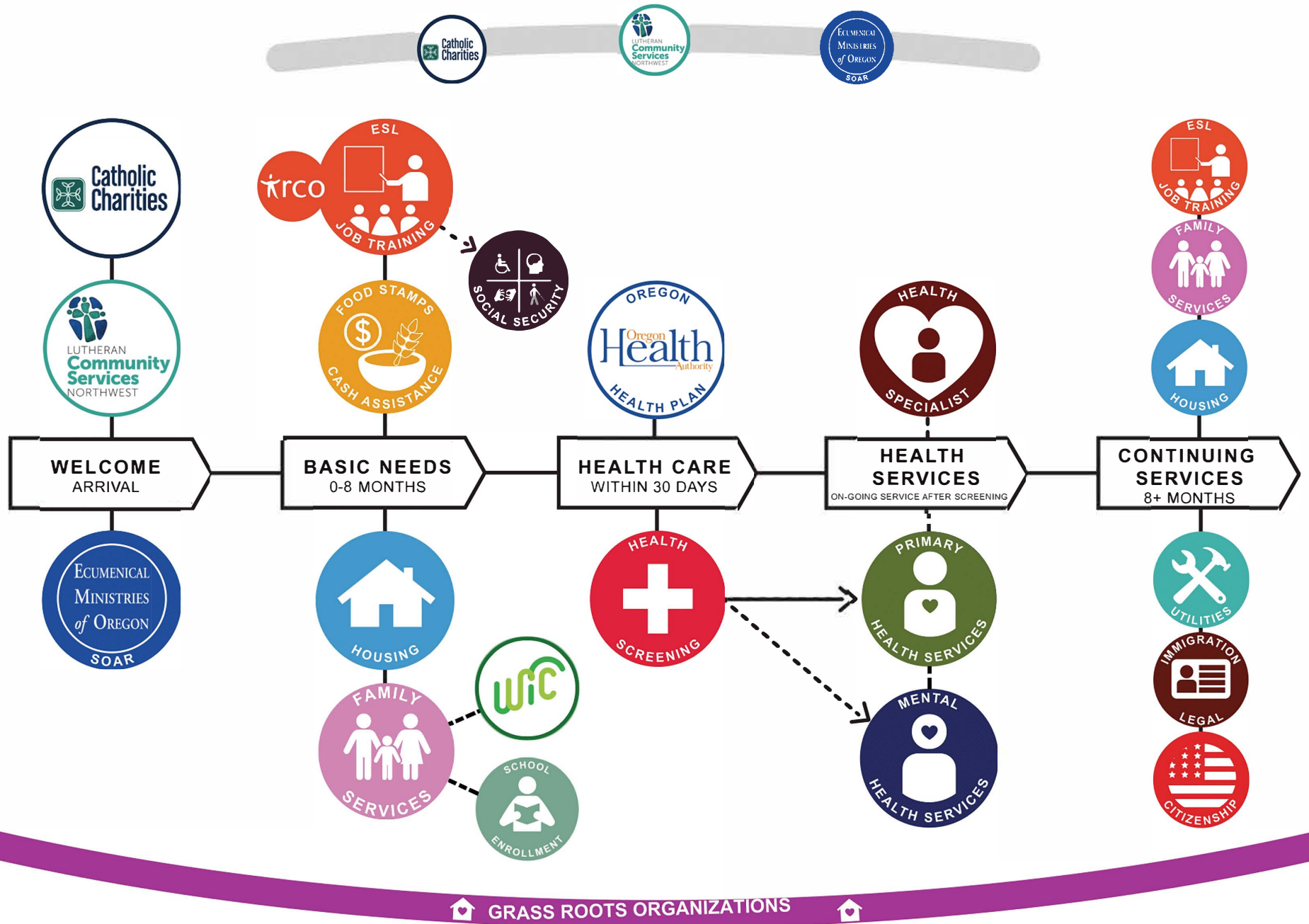


# Oregon Welcomes You



Supported by:



**ARRIVAL  
DAY 1**

**BASIC NEEDS  
0 - 8 MONTHS**


**HEALTH CARE  
ON-GOING SERVICE AFTER SCREENING**

**CONTINUING SERVICES  
8+ MONTHS**

 **Portland Airport**  
7000 NE Airport Way,  
Portland, OR 97218

**VOLUNTARY AGENCIES**  
*Case management, benefits oversight, and housing.*

 **Catholic Charities Services**  
2740 SE Powell Blvd,  
Portland, OR 97202  
(503) 231-4866

 **Lutheran Community Services Northwest (LCSNW)**  
605 SE Cesar E. Chavez Blvd, Portland, OR 97214  
(503) 231-7480

 **Sponsors Organized to Assist Refugees (SOAR)**  
7931 NE Halsey St., Ste. 314, Portland, OR 97213  
(503) 284-3002

 **Grassroots Organizations**

**Multnomah County Global**  
(503) 823-4000  
<https://multco.us/global/cultural-services-directory>


 **ESL/ JOB TRAINING IRCO**  
*English language, vocational training, employment supports, and job placement services*  
10301 NE Glisan St,  
Portland, OR 97220  
(503) 234-1541

 **FOOD STAMPS/ CASH ASSISTANCE**  
**Department of Human Services**  
*Cash Assistance/SNAP - Refugee Branch*  
4425 NE Broadway St.,  
Portland, OR 97213  
(971) 673-5722

 **SCHOOL ENROLLMENT**  
**ORSIPT - School Assistance For Refugee Newcomers (SAFRN)**  
605 SE Cesar E. Chavez Blvd, Portland, OR 97214  
(503) 731-9521

 **SOCIAL SECURITY**  
**Social Security Office**  
17925 SE Division St,  
Portland, OR 97236  
(800) 772-1213

 **Women, Infants and Children (WIC)**  
*Families with children 0-5 and pregnant women*  
131 NE 102nd Ave  
Bldg #1  
Portland, OR 97220  
(503) 988-3503

 **HEALTH SCREENING**  
**Mid County Health Center**  
12710 SE Division St,  
Portland, OR 97236 (503) 988-3601

 **OREGON HEALTH PLAN**  
(800) 966-9075

 **PRIMARY CARE SERVICES**

**East County Health Center**  
600 NE 8th St  
3rd Floor  
Gresham, OR 97030 (503) 988-5558

**Mid County Health Center**  
12710 SE Division St,  
Portland, OR 97236  
(503) 988-3601

**Rockwood Community Health Center**  
2020 SE 182nd  
Portland, OR 97233  
(503) 988-5558

**Virginia Garcia**  
2935 SW Cedar Hills  
Beaverton, OR 97005  
(503) 352-6000

 **MENTAL HEALTH SERVICES**  
**Asian Health and Service Center**  
3430 SE Powell Blvd,  
Portland, OR 97202  
(503) 872-8822

**Avel Gordly**  
621 SW Alder St. #520  
Portland, OR 97205  
(503) 494-4745

**Cascadia**  
10373 NE Hancock St # 200  
Portland, OR 97220  
(503) 674-7777

**Catholic Charities-Family Support and Counseling**  
2740 SE Powell Blvd,  
Portland, OR 97202  
(503) 238-5196

**Conexiones**  
3500 NE Martin Luther King Jr. Blvd.  
Portland, OR 97212  
(503) 327-8205

**LCSNW - Multicultural Counseling Services (MCS)**  
605 SE Cesar E. Chavez Blvd.  
Portland, OR 97214  
(503) 231-7480

**OHSU Intercultural Psychiatric Program (IPP)**  
2214 Lloyd Center,  
Portland, OR 97232  
(503) 494-4222

 **ESL/JOB TRAINING**  
**Vocational Rehabilitation**  
305 NE 102nd Ave #200,  
Portland, OR 97220  
(971) 673-5858

 **FAMILY SERVICES**  
**Department of Human Services-Self Sufficiency**  
1415 SE 122nd Ave  
Portland, OR 97233  
(971) 673-5566

**IRCO Family Services**  
10301 NE Glisan St,  
Portland, OR 97220  
(503) 234-1541

**Women, Infants and Children (WIC)**  
131 NE 102nd Ave  
Bldg #1  
Portland, OR 97220  
(503) 988-3503

 **HOUSING**  
**AFC Rental Assistance Hotline**  
(503) 234-2048

**Habitat For Humanity**  
1478 NE Killingsworth St,  
Portland, OR 97211  
(503) 287-9529

**Home Forward**  
135 SW Ash St, Portland,  
OR 97204  
(503) 802-8300

**IRCO Africa House Rental Assistance**  
(503) 802-0082

 **LEGAL SERVICES**  
*Individual consultation, green card and citizenship legal services, citizenship classes.*

**Catholic Charities Services**  
2740 SE Powell Blvd., #2 (Floor 3)  
Portland, OR 97202  
(503) 542-2855

**Lutheran Community Services Northwest (LCSNW)**  
605 SE Cesar E. Chavez Blvd, Portland, OR 97214  
(503) 231-7480  
(503) 731-9538

**Sponsors Organized to Assist Refugees (SOAR)**  
7931 NE Halsey St., Ste. 302,  
Portland, OR 97213  
(503) 384-2482

 **SOCIAL SECURITY**  
**Refugee & Immigrant Services and Empowerment (RISE)**  
8040 NE Sandy Blvd.  
Portland, OR 97213

 **UTILITY ASSISTANCE**  
**AFC Energy Assistance Hotline**  
(503) 235-4932

**Africa House Energy Line**  
(503) 234-1959

**Impact NW**  
(503) 294-7444

**Latino Network**  
410 NE 18th Ave,  
Portland, OR 97232  
(503) 283-6881

Supported by:



Revised March 2019  
Oregon Family to Family to Family Health Information Center

**For additional resources including crisis services: Call 2-1-1**