

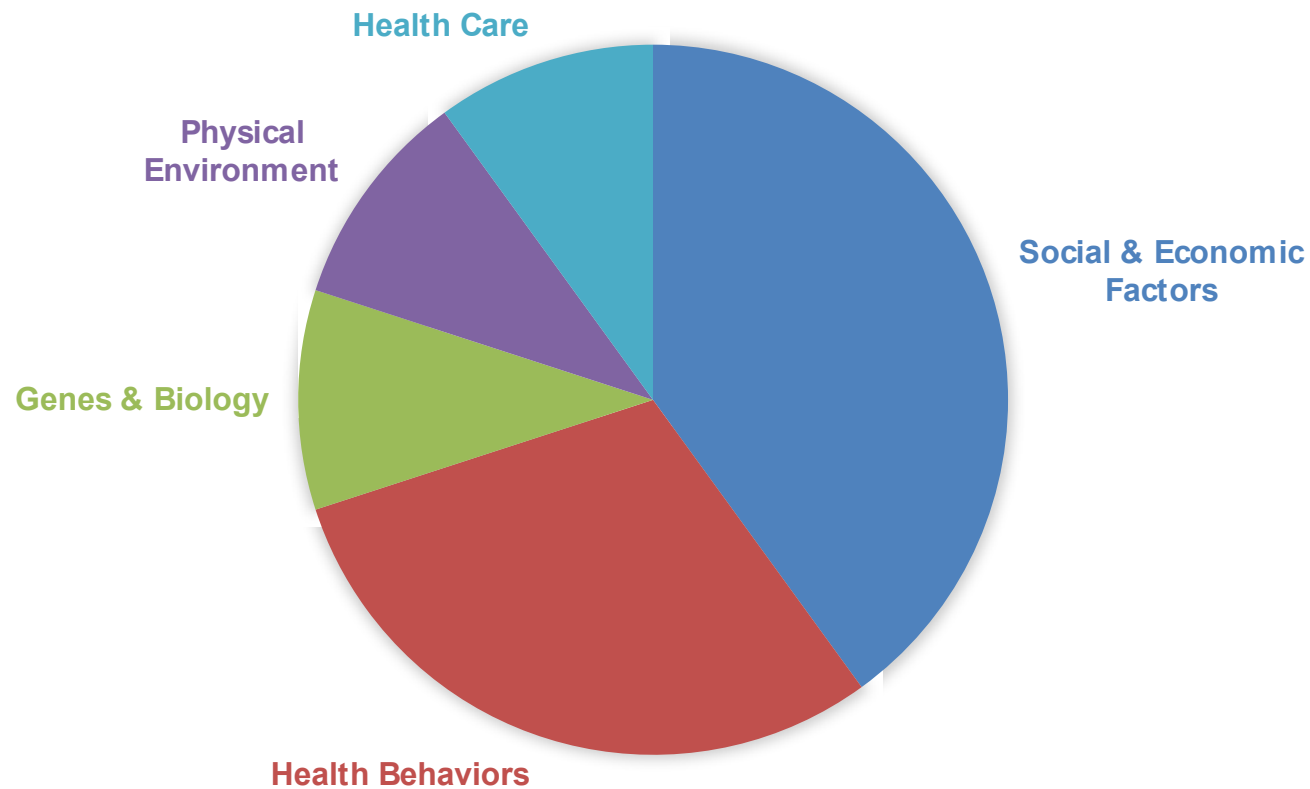


Native American Youth and Family Center

PUTTING THE COMMUNITY IN COMMUNITY BENEFIT

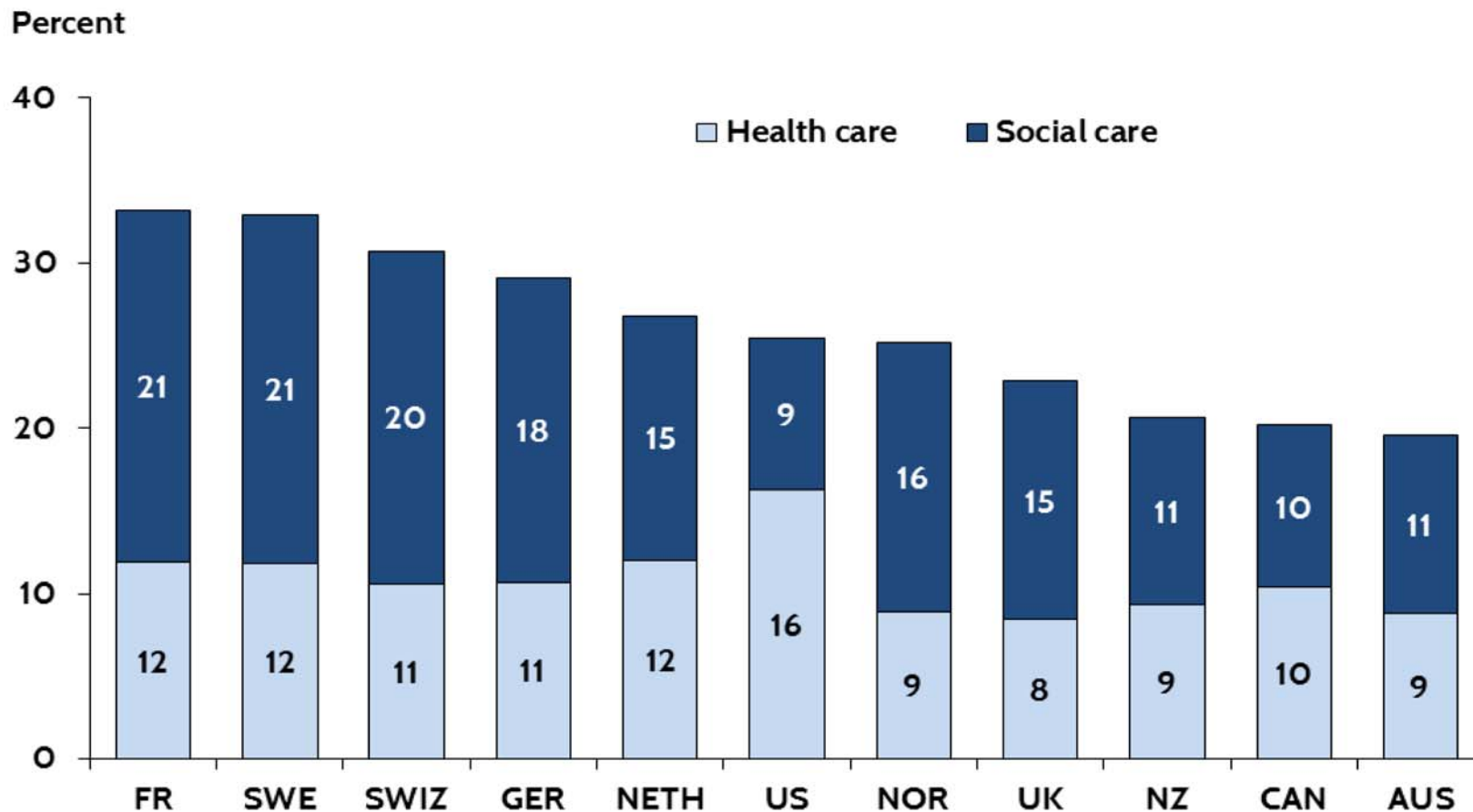
NWHF

WHAT DETERMINES HEALTH



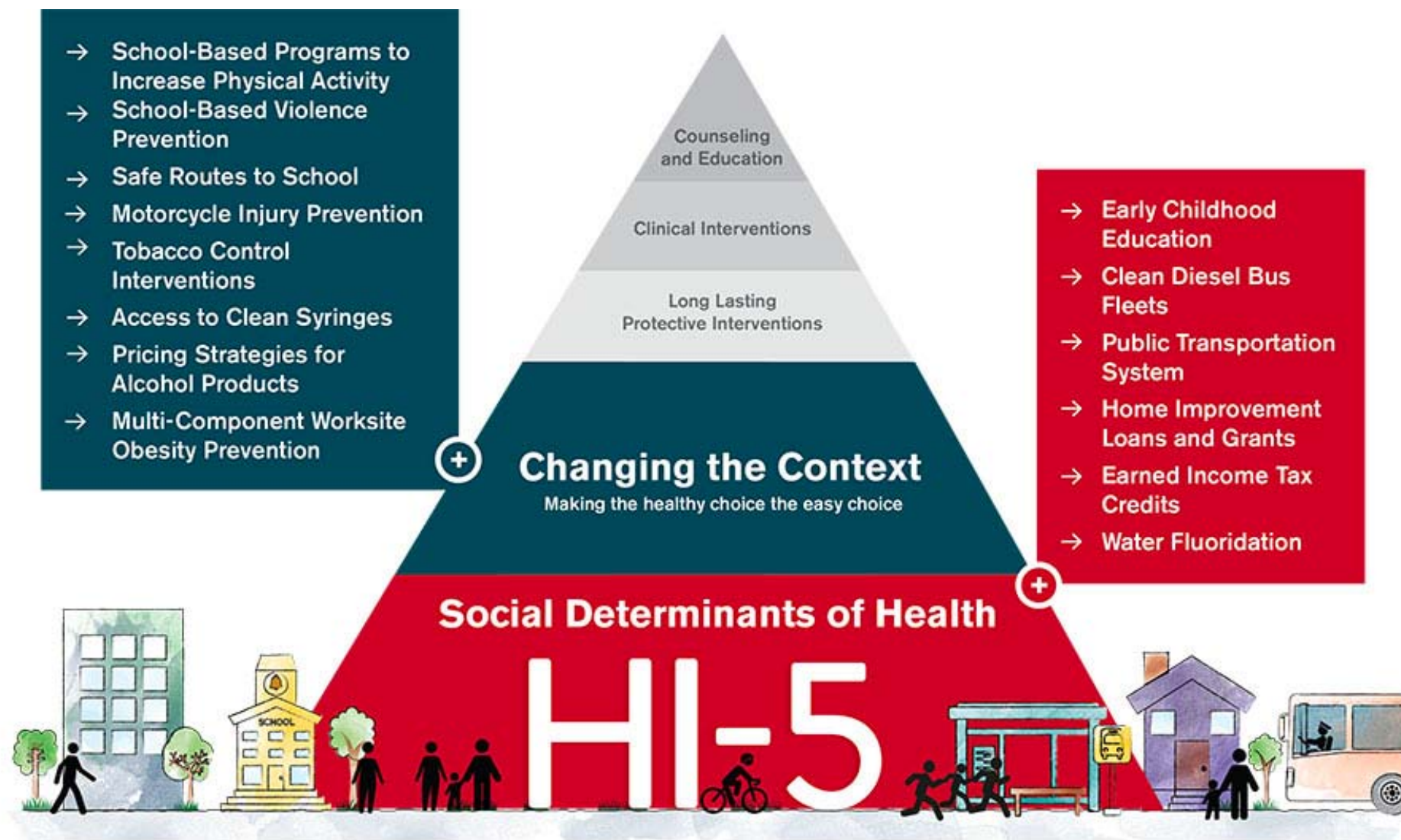
Source: Tarlov AR. Public policy frameworks for improving population health. Ann NY Acad Sci 1999

HEALTH & SOCIAL SPENDING BY % OF GDP



Notes: GDP refers to gross domestic product.

Source: E. H. Bradley and L. A. Taylor, *The American Health Care Paradox: Why Spending More Is Getting Us Less*, Public Affairs, 2013.



Hospitals and health systems get it.

“72% of surveyed hospitals report not having dedicated funds to address social needs for all of their target populations.”

Deloitte Survey:
How are hospitals &
health systems investing in
and addressing social needs?

“IRS-related community-benefit obligations of non-profit hospitals represent, albeit unevenly, some of the most notable long-term healthcare industry financing for community health-related projects.”

Population Health Investments by Health Plans and
Large Provider Organizations:
Exploring the Business Case

**“Community Benefit and Social
Determinants should be best friends.”**

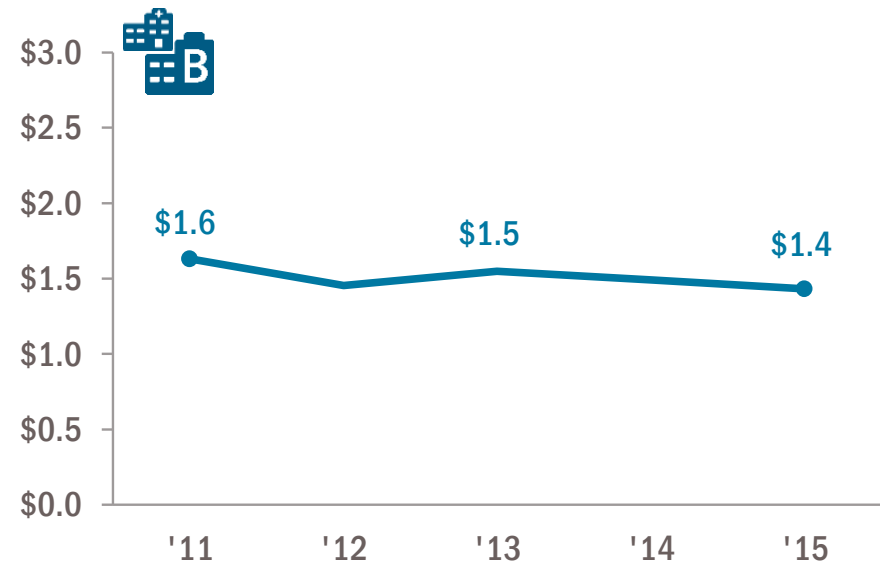
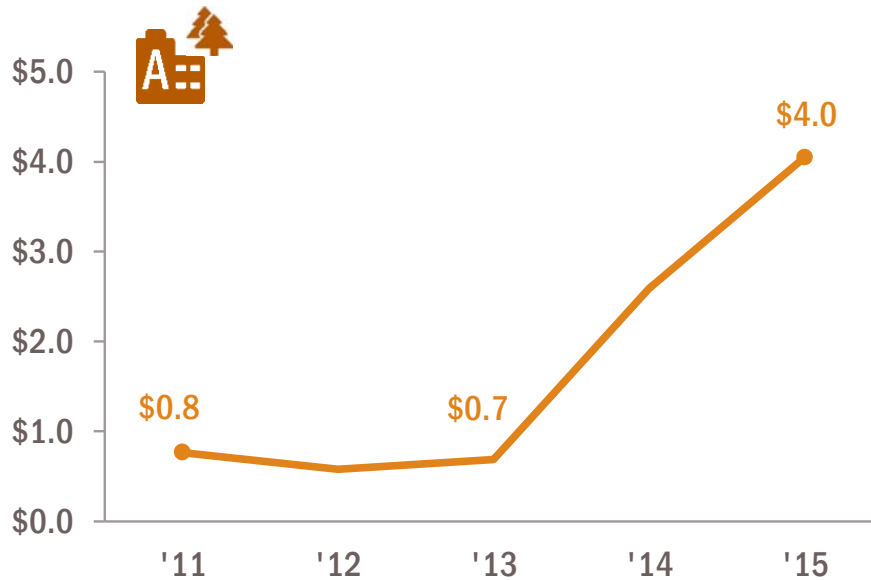
My 3 year-old niece



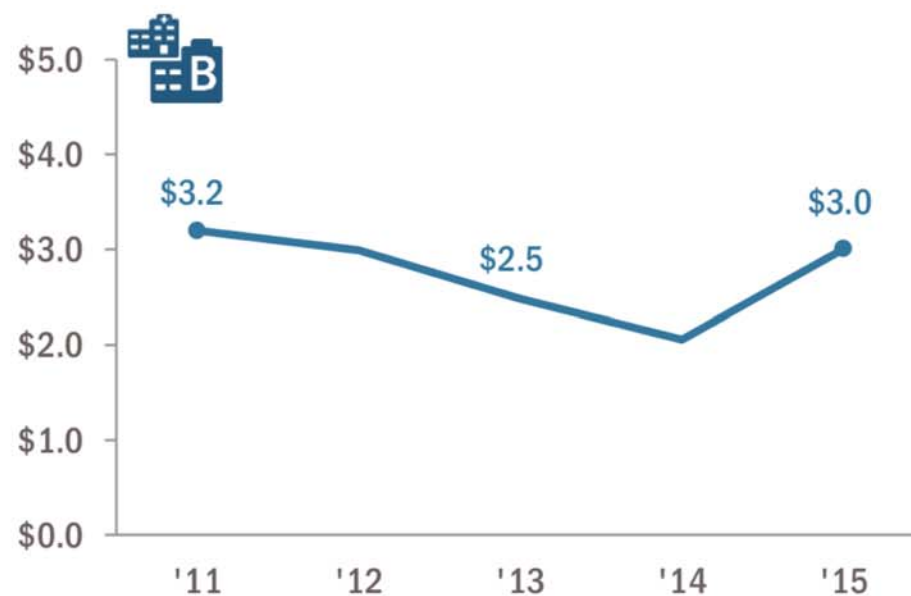
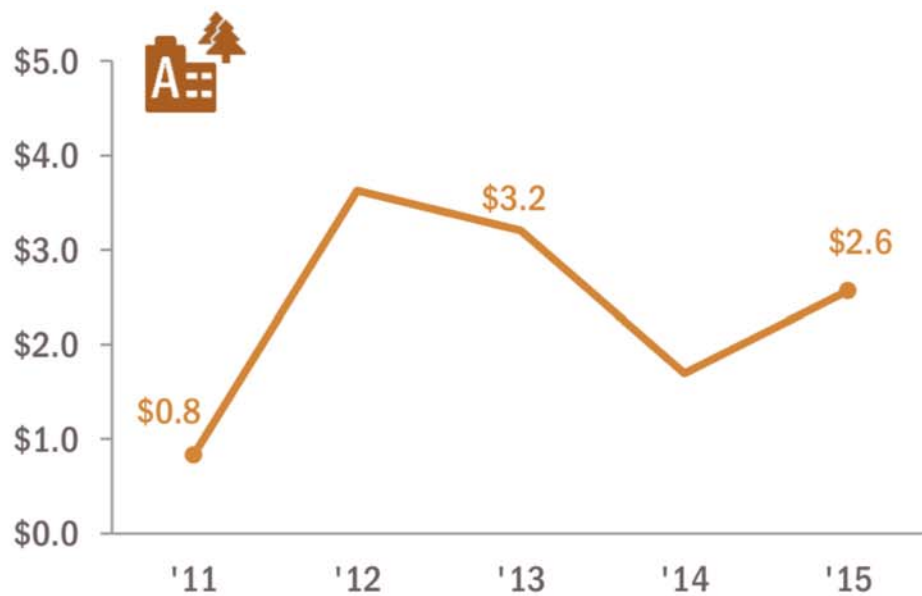
COMMUNITY BENEFIT IN OREGON

NWHF

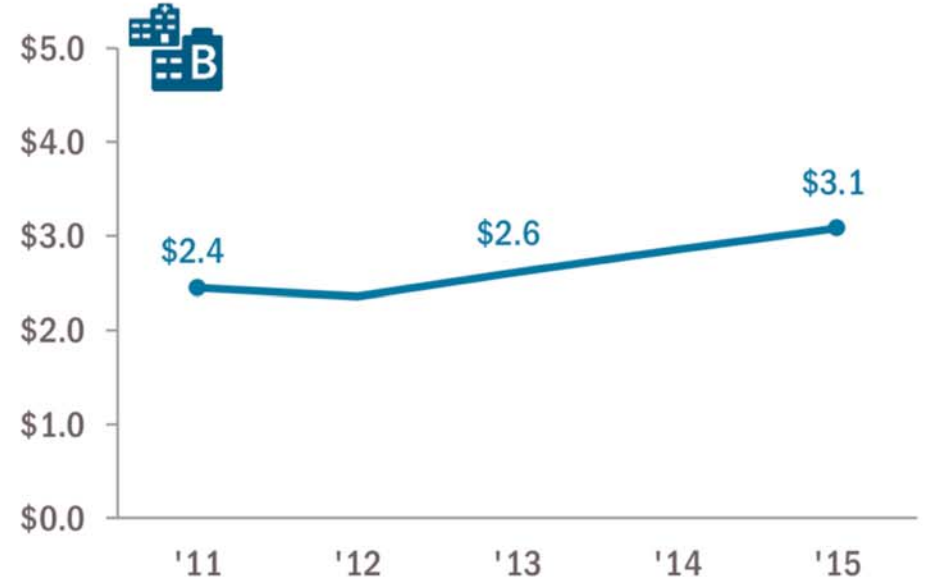
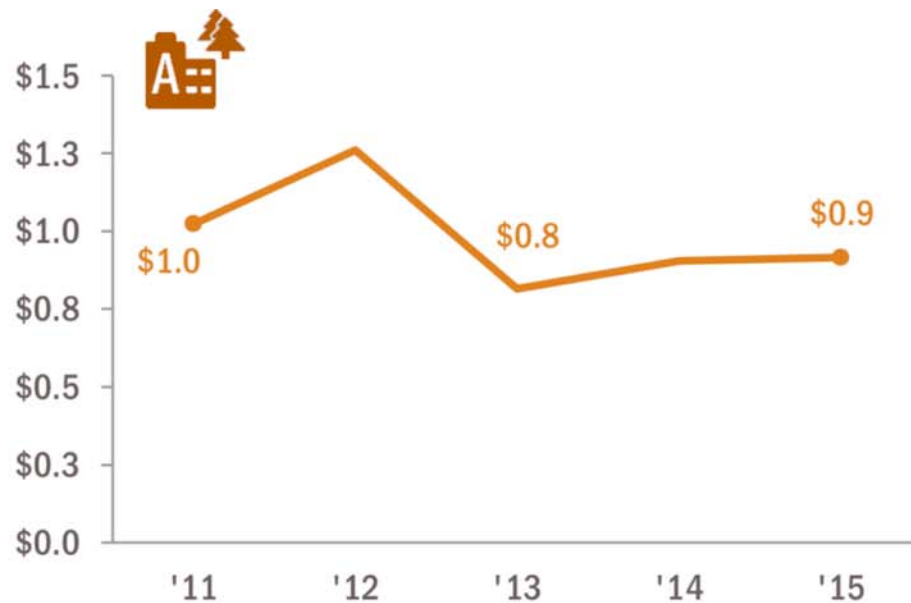
COMMUNITY BUILDING



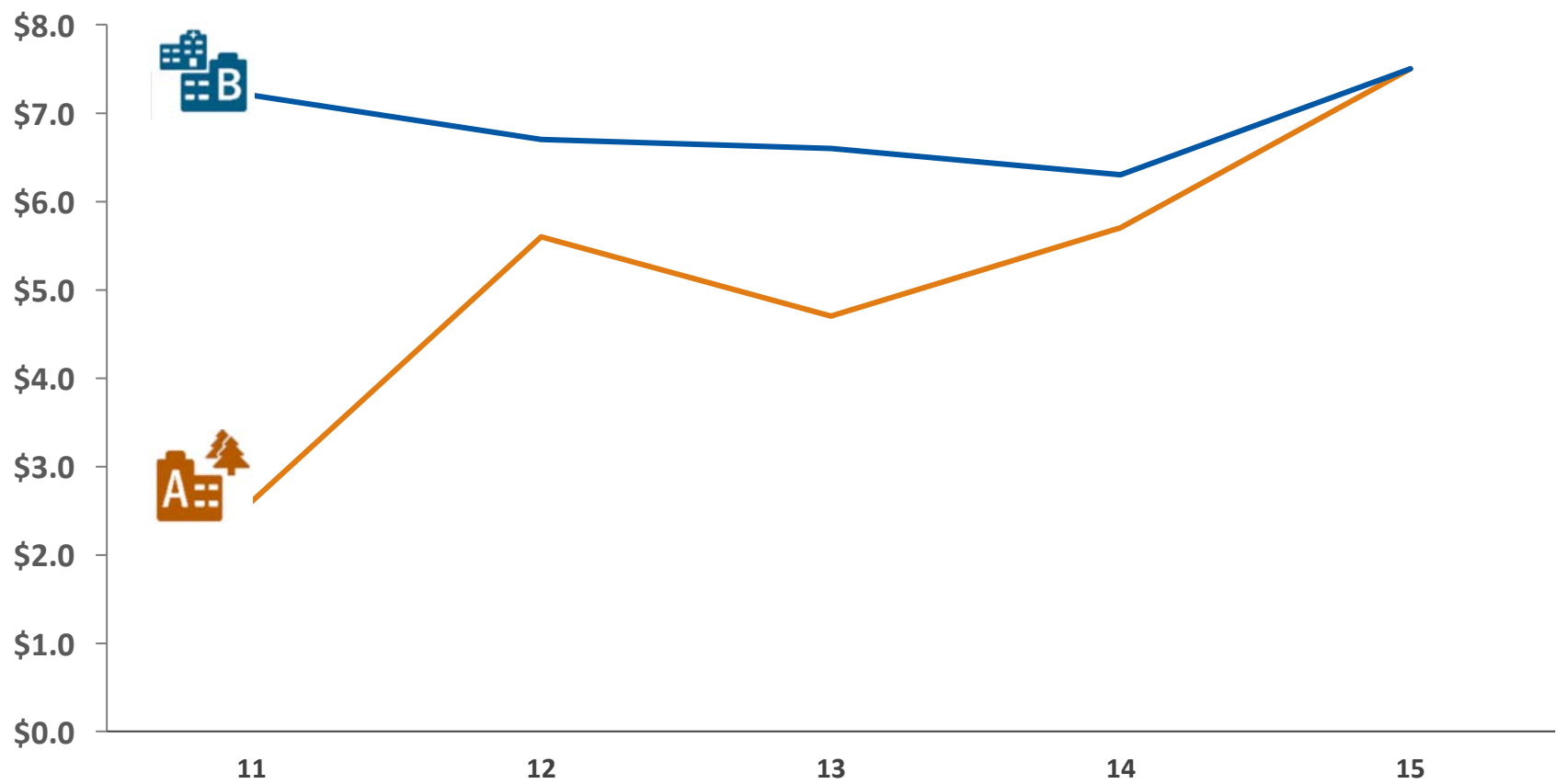
COMMUNITY HEALTH IMPROVEMENT



CASH & IN-KIND CONTRIBUTIONS



TOTAL



**WHAT DOES ALL THIS TELL US
ABOUT COMMUNITY BENEFIT
& SOCIAL DETERMINANTS?**

NOT MUCH!



Community Benefit
INSIGHT

hospitalcommunitybenefit.org



Mobile Health Clinic





Collaboration is Key





Collaborative Partners

- Family Residency of Idaho
- Terry Reilly Health Services
- Southwest District Health
- Community Council of Idaho
- Idaho Labor Department
- Idaho Food Bank
- Family Eyecare Associates
- BSU GED Program
- U of I Extension
- Catholic Charities
- ISU Pharmacy Program
- Centro de Comunidad y Justicia
- Faith Community Nurses





DISCUSSION & QUESTIONS

NWHF