

Guideline # HC-PAT-133-GUD	Title: Treatment Algorithm for Acute Infusion Reaction – Adults (to be used in all OHSU Infusion Clinics and on Inpatient Oncology Units ONLY)	
Effective Date: 8/1/2013	Category: Pharmacy & Therapeutics Guideline	
Origination Date: 8/1/2013	Next Review Date: 8/1/2016	Pages 1 of 3

PURPOSE:

To standardize treatment of acute infusion reactions at OHSU Infusion Clinics and on Inpatient Oncology Units ONLY

DEFINITIONS:

O₂sat: Oxygen saturation
 SBP: Systolic Blood Pressure
 IV: Intravenous
 IM: Intramuscular
 NS: Normal Saline (0.9% sodium chloride)
 Q5: every 5

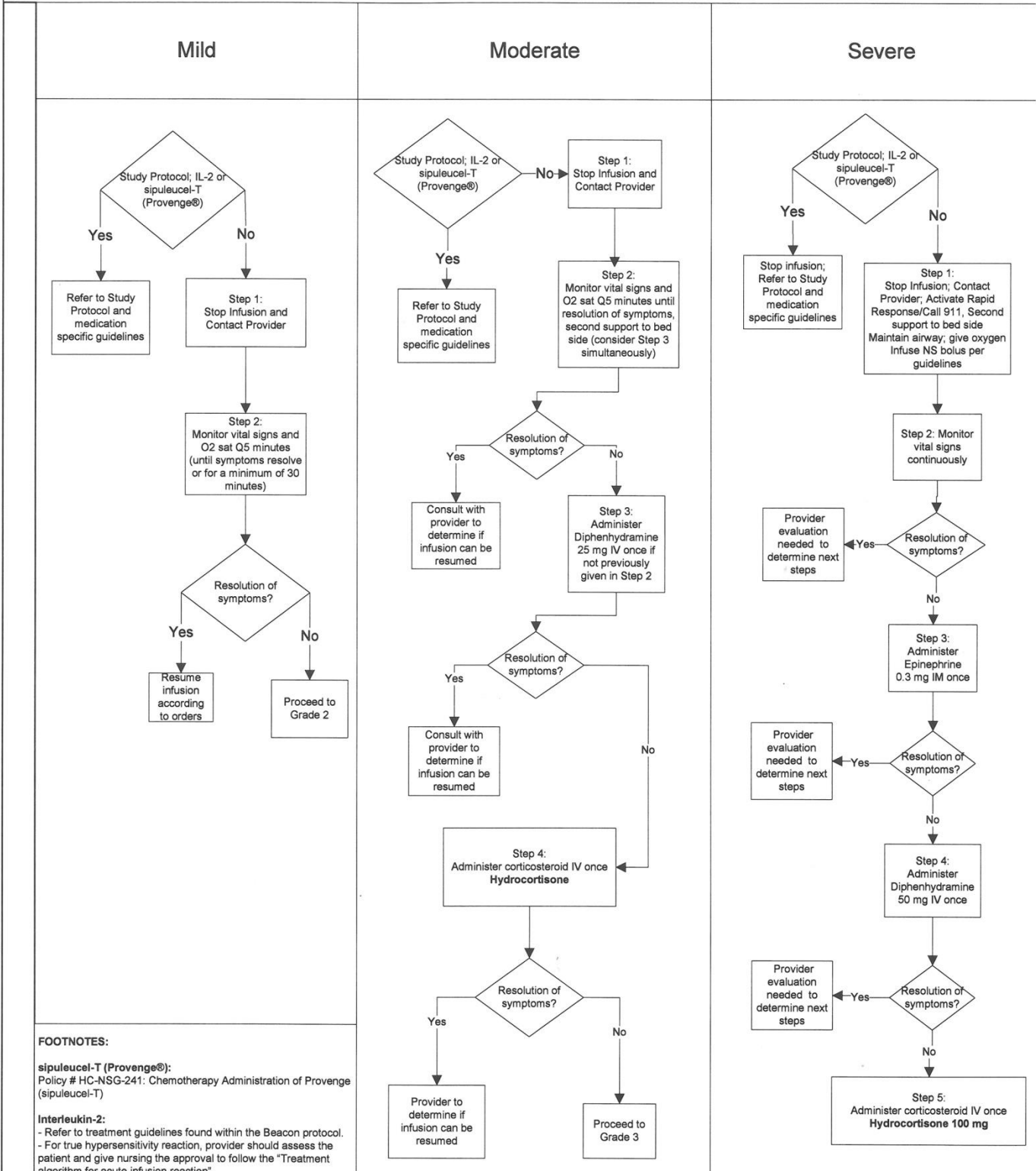
GUIDELINE:

See flow chart below

Severity	Mild	Moderate	Severe	Algorithm based on initial grade. Please continuously reassess as grade may progress
Symptoms	<ul style="list-style-type: none"> - Flushing - Headache - Nausea - Hyperemia - Temperature < 38°C or < 100.4°F - Dizziness - Diaphoresis - Palpitations 	Mild Symptoms plus <ul style="list-style-type: none"> - Chest discomfort (tightening, pressure) - Shortness of breath - Hypo/Hypertension (≥ 20 point change in SBP) - Increased temperature ($\geq 38^\circ\text{C}$ or $\geq 100.4^\circ\text{F}$) with rigors - Urticaria 	Mild & Moderate Symptoms plus <ul style="list-style-type: none"> - Hypo/hypertension (≥ 40 point change in SBP) - Shortness of breath (RR>20; O₂ sat<90%) with wheezing or stridor 	

Treatment Algorithm for Acute Infusion Reaction – Adult

Only for OHSU Infusion Clinics and Inpatient Oncology Units



RELEVANT REFERENCES:

N/A

RELATED DOCUMENTS/EXTERNAL LINKS:

N/A

TITLE, POLICY OWNER:

Oncology Sub-Committee of Pharmacy and Therapeutics
Pharmacy and Therapeutics

APPROVING COMMITTEE(S):

Oncology Sub-Committee of Pharmacy and Therapeutics
Pharmacy and Therapeutics

FINAL APPROVAL:

Pharmacy and Therapeutics