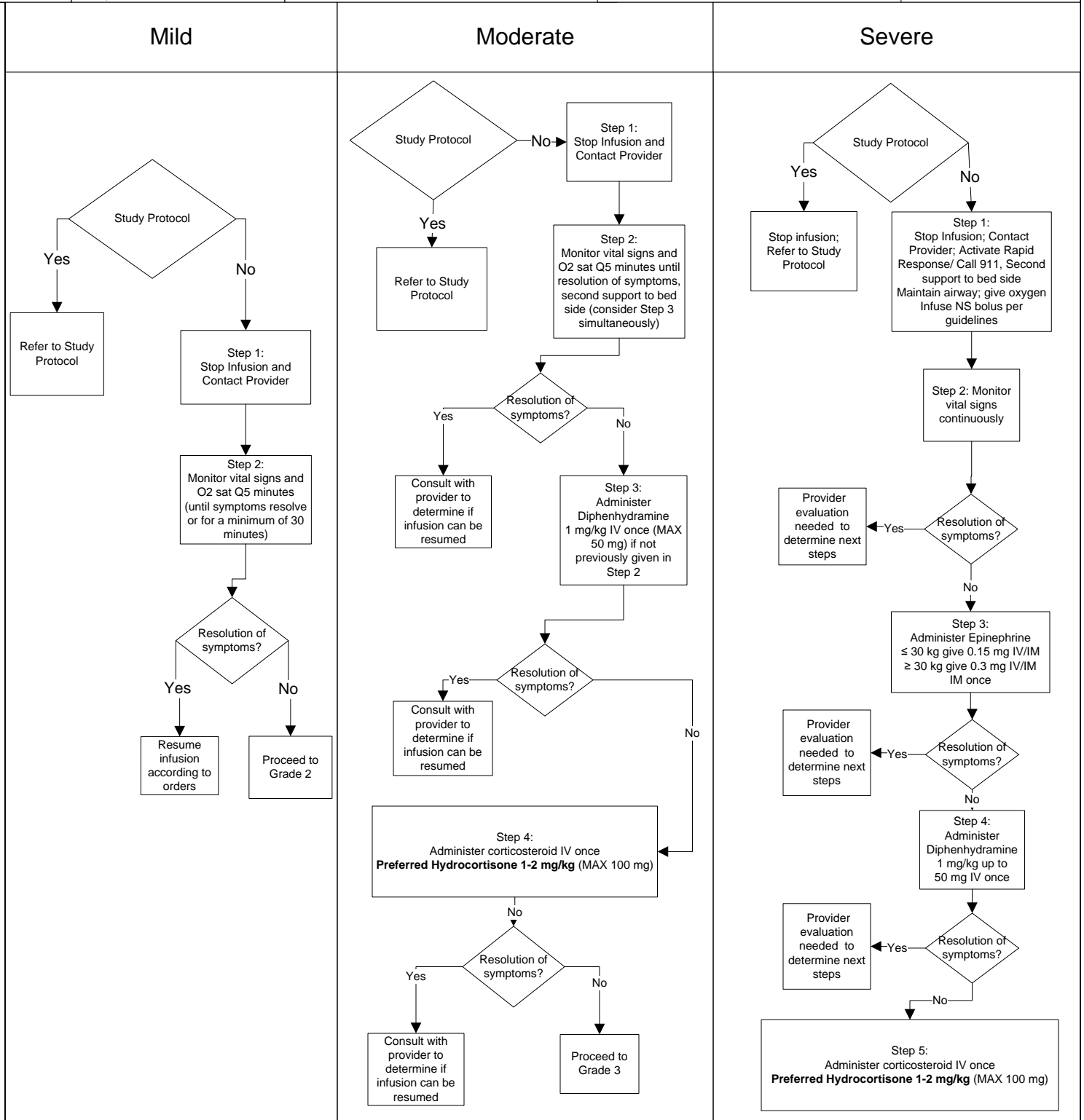


Policy#:	Treatment Algorithm for Acute Infusion Reaction to be used in all OHSU Infusion Clinics and on Inpatient Oncology Units - Pediatrics	
Effective Date: September 1, 2013	Category:	
Origination Date: September 1, 2013	Next Review Date:	Pages 1 of 1

Severity	Mild	Moderate	Severe	Algorithm based on initial grade. Please continuously reassess as grade may progress
Symptoms	<ul style="list-style-type: none"> <li>- Flushing</li> <li>- Headache</li> <li>- Nausea</li> <li>- Hyperemia</li> <li>- Temperature &lt; 38°C or &lt; 100.4°F</li> </ul>	<ul style="list-style-type: none"> <li>- Dizziness</li> <li>- Diaphoresis</li> <li>- Palpitations</li> </ul> <b>Mild Symptoms plus</b> <ul style="list-style-type: none"> <li>- Chest discomfort (tightening, pressure)</li> <li>- Mild shortness of breath or respiratory distress</li> <li>- Increased temperature (<math>\geq 38^{\circ}\text{C}</math> or <math>\geq 100.4^{\circ}\text{F}</math>) with rigors</li> <li>- Urticaria</li> </ul>	<b>Mild &amp; Moderate Symptoms plus</b> <ul style="list-style-type: none"> <li>- Hypo/hypertension (<math>\geq 20</math> point change in SBP)</li> <li>- Shortness of breath (<math>\text{O}_2</math> sat &lt; 90%) with wheezing or stridor or no air entry</li> </ul>	



**TITLE, POLICY OWNER:**  
Department of Pharmacy Services

**APPROVING COMMITTEE(S):**  
Pharmacy and Therapeutics Committee

**FINAL APPROVAL:**  
Pharmacy and Therapeutics Committee