

SAFETY LEADERSHIP THROUGH RELATIONSHIPS

MEET OUR TEAM



Chief Executive Officer

STEVE EAST

Ideation
Activator
Relator
Futuristic
Strategic

BS: Construction Science and
Management,
Western Michigan University



Chief Operating Officer

MARK ROYS

Strategic
Responsibility
Analytical
Intellection
Consistency

MS: Construction Engineering and
Management, University of Michigan
BS: Mechanical Engineering, University of
Arizona
Registered Professional Engineer, State of
Georgia



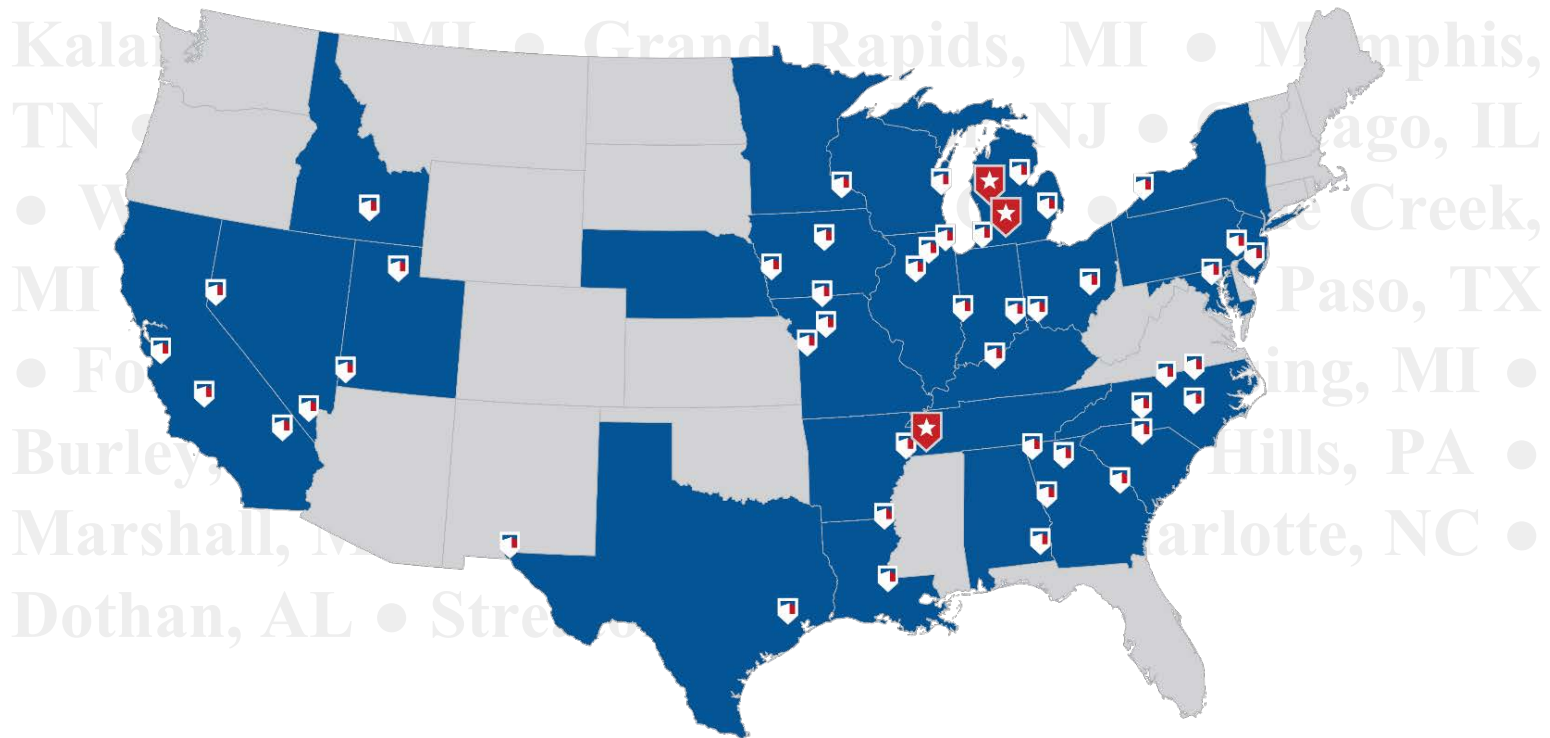
Vice President EH&S

KEVIN KIRK

Deliberative
Adaptability
Achiever
Relator
Strategic

BS: Construction Management,
Ferris State University
Certified Safety Professional (CSP)

WHO WE ARE



CSM Group is a construction services company with national experience managing projects of all sizes.



KAISER
ALUMINUM

 **BRONSON**

 **Fresh Market**

 West Michigan Cancer Center
& INSTITUTE FOR BLOOD DISORDERS
A Borgess Bronson Collaboration



stryker[®]

SOUTH HAVEN
HEALTH SYSTEM
Excellence Everywhere. Close To Home.

ConAgra
Foods[®]
Food you love

HUMMEL
MANN+

BELL'S

Inspired Brewing[®]

meijer

MILLER
CANFIELD

Consumers Energy
Count on Us

 **OTSEGO**
PUBLIC SCHOOLS


Pride. Performance. Potential.


KALAMAZOO
GOSPEL
MISSION


Holiday Inn

MPI
RESEARCH

Kellogg's

 **DUKE**
ENERGY[®] **LIFE** ems.
AMBULANCE

girl scouts 


STATE OF MICHIGAN

STATE OF MICHIGAN

southwest michigan  **first**

EAT-N

THE UNION
University Children & Girls


PARCHMENT
SCHOOL DISTRICT

eliminating racism
empowering women
ywca

 **GREENLEAF TRUST**[®]

DTMB
Department of
Technology, Management & Budget

Midlink
Business Park

W
WESTERN MICHIGAN UNIVERSITY


KALAMAZOO COUNTY GOVERNMENT

OC

MONSANTO



FK **Fabri-Kal**[®]
EXPERIENCE A BETTER PACKAGE.[™]

Michael's
Where Creativity Happens[®]


trois
residential opportunities inc.

SC Johnson
A FAMILY COMPANY


CITY OF KALAMAZOO
PUBLIC SAFETY

Felpausch

WINGS
EVENT CENTER

KALAMAZOO
GAZETTE
BEST LOCAL CONNECTION

NATIONAL
FLAVORS
PREMIER FLAVORS...PASSIONATE SERVICE

Kalamazoo VALLEY[™]

 **GIFT of LIFE**
DONOR PROGRAM


American
Red Cross

reno
orthopaedic
clinic **roc**

 **Allegan**
General Hospital

Morgan
Stanley


BINDER
ZOO

National
Heritage
Academies[®]

the **Y**
YMCA



 **FAMILYHEALTH**
center



MARSHALL
PUBLIC SCHOOLS

Radisson


BINDER
ZOO

MENARDS[®]

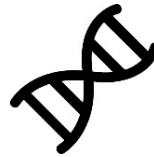
Coldwater Community Schools



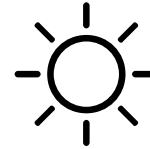
IMPACTS ON RELATIONSHIPS



HISTORY



DNA



ENVIRONMENT

INDUSTRY DATA

- 4,836 workers were killed on the job in 2015
- On average, more than 93 a week or more than 13 deaths every day
- Out of 4,379 worker fatalities in private industry in calendar year 2015, 937 or **21.4%** were **in construction**
- Construction's "Fatal Four"
 - Falls (38.8%)
 - Struck by Object (9.6%)
 - Electrocutions (8.6%)
 - Caught-in/between (7.2%)

NOT SAFE



“But VERY Cool!”



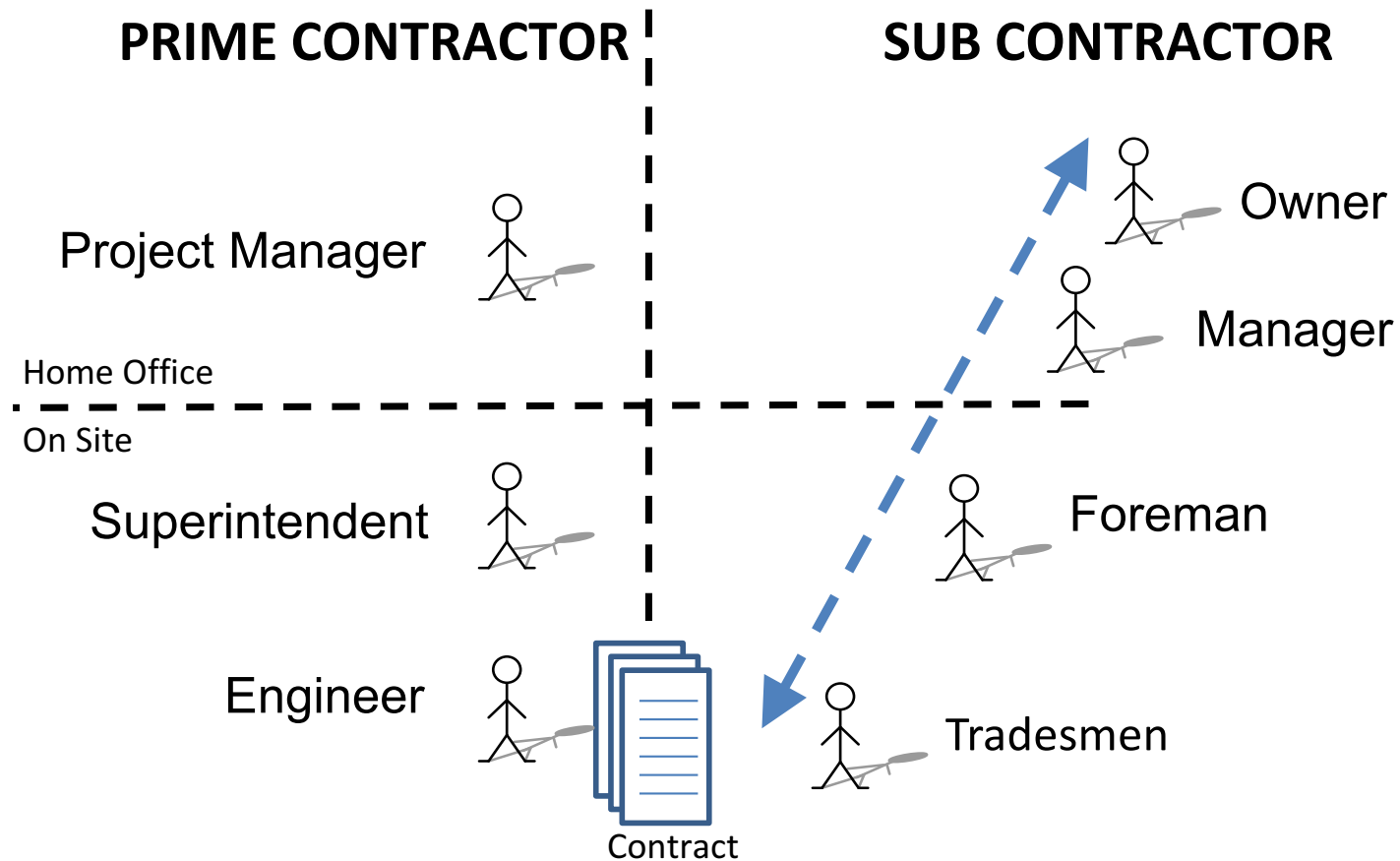


**"You had
ONE job!"**

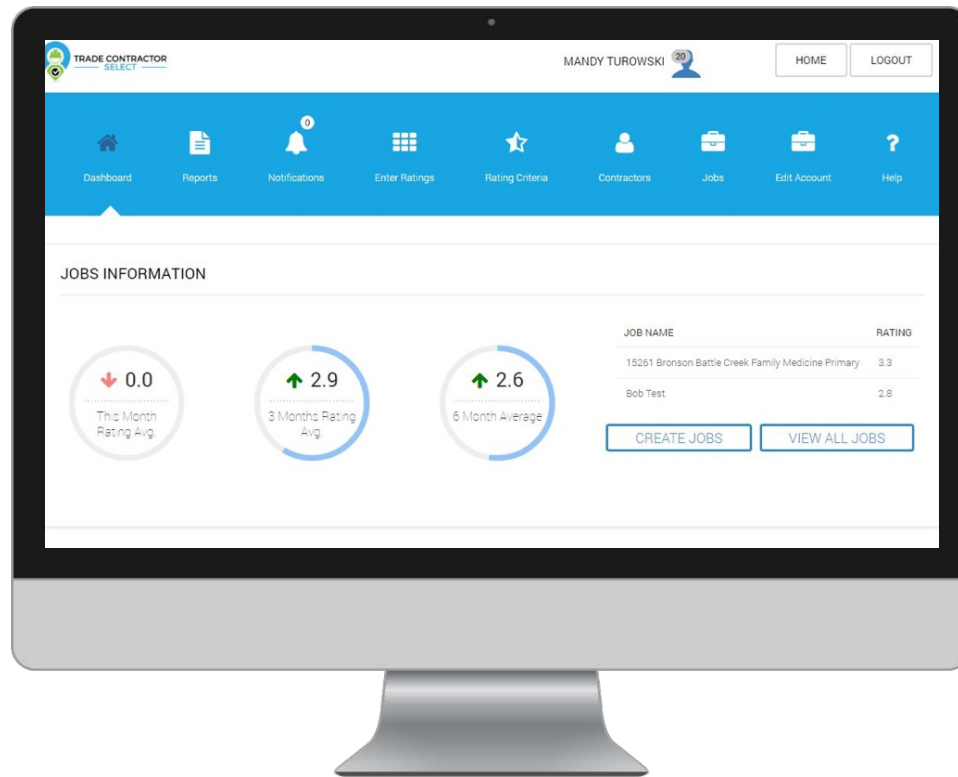


EVER CHANGING PHYSICAL ENVIRONMENT

Subcontracted Construction



TRADE CONTRACTOR SELECT



Behavioral Science Based Assessment Program



SAFETY ROUNDTABLE

KEY PERFORMER EVENT





OUTSTANDING FOREMAN AWARD

Thank you for helping Build Owners' Trust!

FOREMAN APPRECIATION EVENT

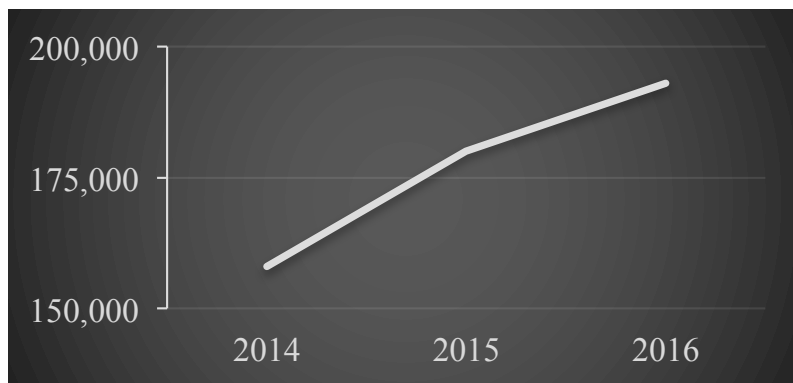




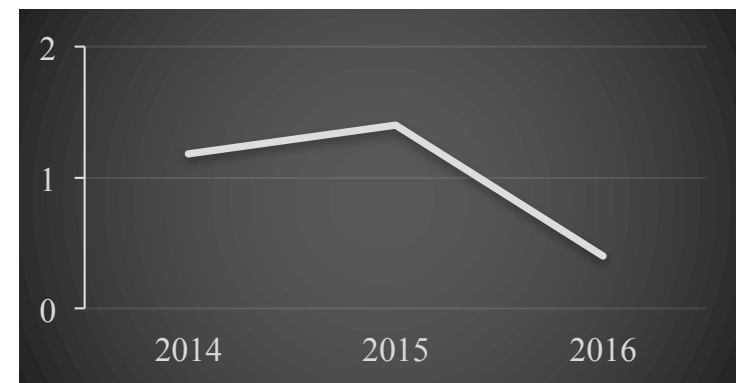
EXECUTIVE PANEL DISCUSSIONS

LEAD WITH SAFETY

CSM Hours Worked



Work Managed TRIR





THANK YOU