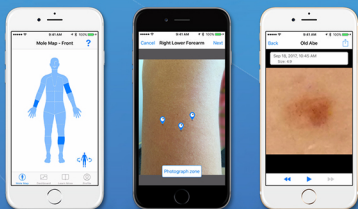


# MoleMapper

## Map Measure Monitor



Take control of your skin health from the palm of your hand.

Changes in a mole's appearance over time can indicate the start of skin cancer.

**MoleMapper™ is a cellphone app designed to help you map, measure, and monitor your moles — giving you the tools to look for potentially harmful changes in your skin.**



### Step 1: Map

Map the moles on your body by photographing smaller areas of your skin called zones.



### Step 2: Measure

Select your moles in your zone photos by tapping on them. Use a coin to measure the actual size of your moles.



### Step 3: Monitor

Compare your mole measurements and images over time. MoleMapper™ will remind you to re-measure monthly.

## How can MoleMapper™ help me?

Tracking moles isn't easy. It's hard to remember what they looked like a month ago. With this app, your phone helps you remember. By taking multiple pictures of your moles over time, you can see how your moles have changed. It can't tell you if one is skin cancer yet, but knowing it changed and seeking medical care may save your life.

## How can MoleMapper™ help my doctor care for me?

It's often said "a picture is worth a thousand words." MoleMapper™ helps your healthcare provider when you show them a series of magnified pictures of your moles. How moles change over time is a critical factor in diagnosing skin cancer.

## How can using MoleMapper™ help save lives?

If you join our study, you can securely share your pictures with researchers. Help us learn. Can an app capture diagnostic quality images? Can an app detect what is normal for you and what is of concern? Can an app detect skin cancer? We're in the early stages but OHSU is working with scientists around the world to answer questions like these. Be a part of "citizen science" by contributing to the millions of images needed to answer these questions.

To find out more, visit  
[molemapper.org](http://molemapper.org)

