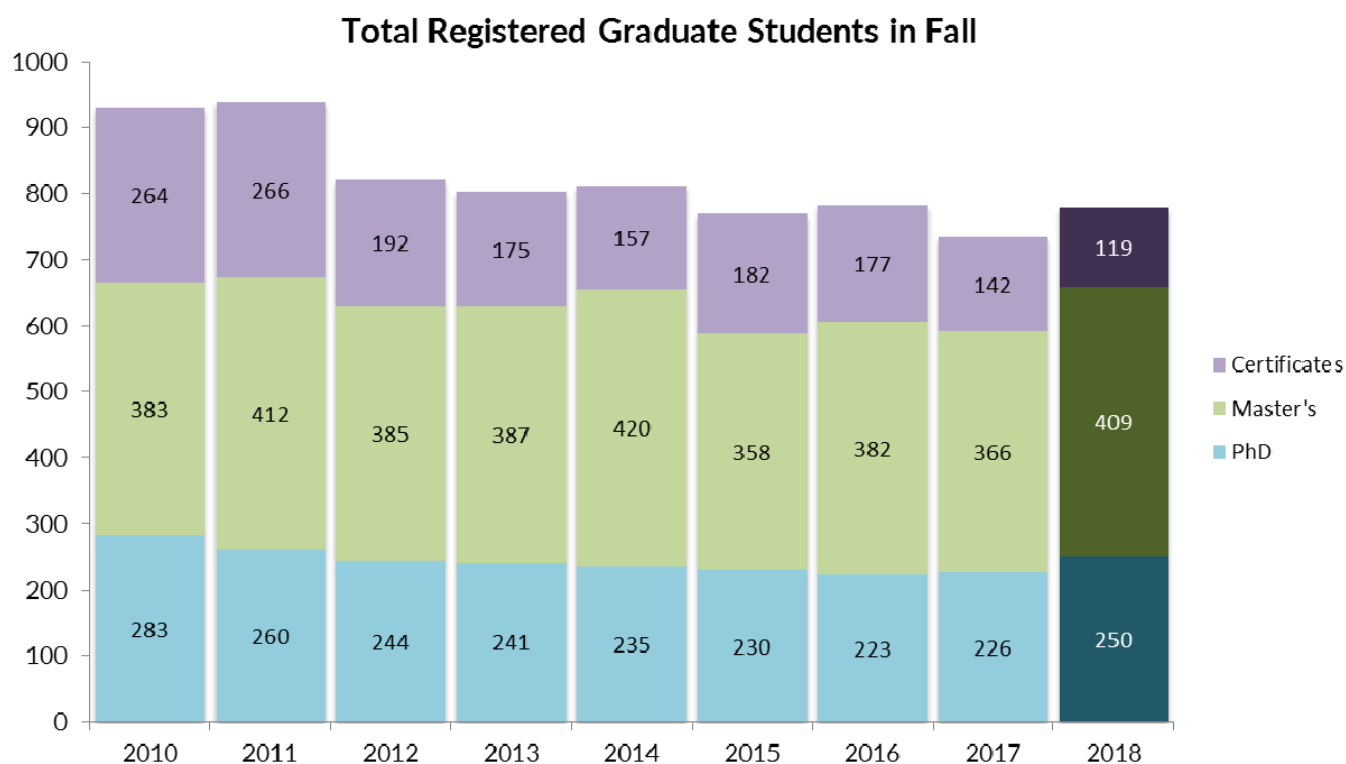


## Graduate Student Enrollment in the SoM Fall 2018

Data gathered on 1 November 2018. Data represents enrolled students only (i.e. it excludes students on leave or otherwise not registered- this is not a change from prior years).

*Figure legend for all data:* Vertical axis of each graph is # students registered every Fall. Dark bar in each graph shows current 2018 data.



#### PhD Program Abbreviations:

**BEHN** Behavioral Neuroscience, **BME** Biomedical Engineering, **BMI** Biomedical Informatics, **CS** Computer Science and Engineering, **EE** Electrical Engineering, **EBS** Environmental and Biomolecular Systems (**BMB** Biochemistry and Molecular Biology and **ESE** Environmental Science and Engineering), **NGP** Neuroscience, **PMCB** Program Molecular and Cellular Biosciences

#### MS Program Abbreviations:

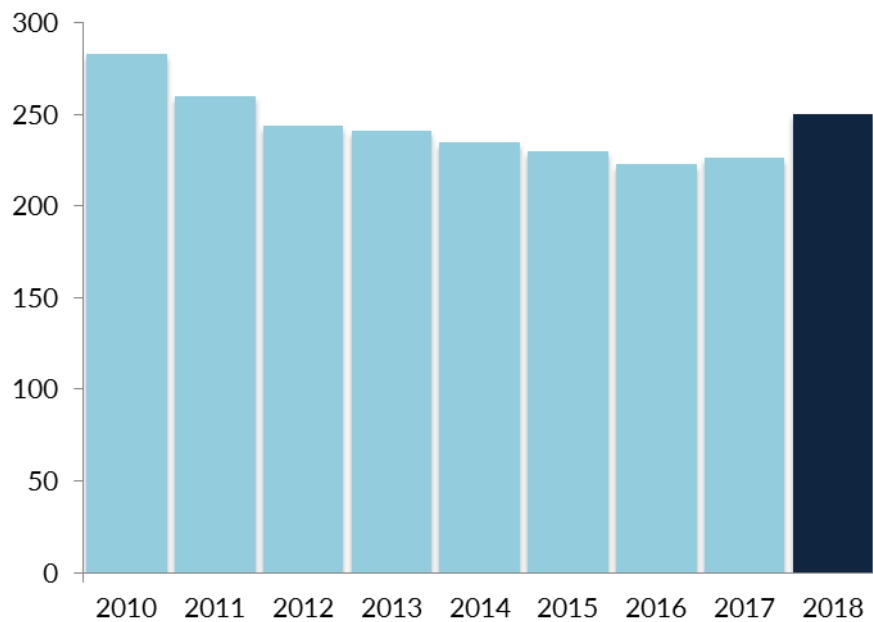
**BMI** Biomedical Informatics, **CS** Computer Science and Engineering, **EE** Electrical Engineering, **BMB** Biochemistry and Molecular Biology, **ESE** Environmental Science and Engineering, **FSS** Food Systems & Society, **HIP** Human Investigations Program, **HN** Human Nutrition, **HCM** Health Care Management, **MBA** Master of Business Administration

## PhD Students

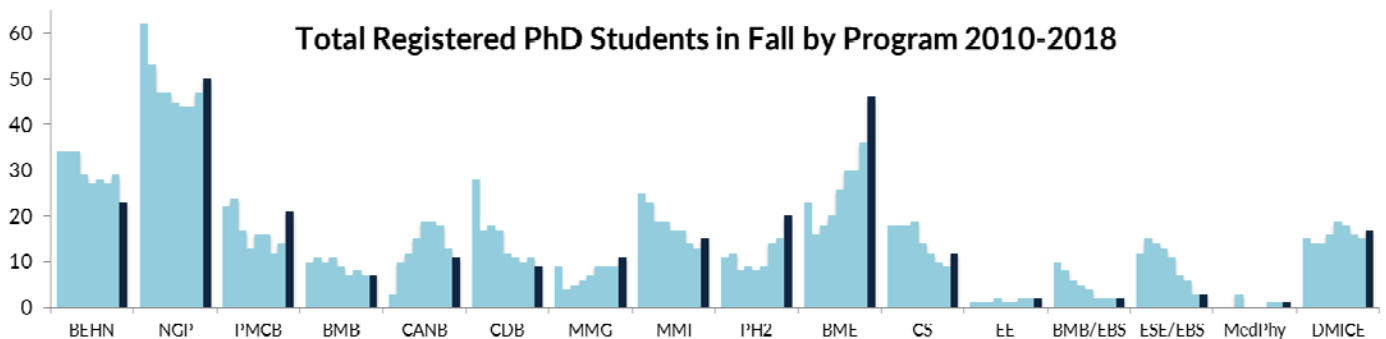
total students 250 (including MD/PhD in the PhD programs)

- 29% of students are in the neurosciences, 31% in engineering/informatics, and 38% in biomedical sciences
- Fastest growing program BME
- Steady decline in PhD student numbers since 2010 is now trending upwards
- 4 programs have 3 or fewer students; these are BMB/EBS and ESE/EBS both of which ceased admissions in 2017 as well as EE and MedPhy.
- This year PMCB admitted more students than in past 5 years- anticipate that this will be reflected in some growth in basic science programs next year

### Total Registered PhD Students in Fall



### Total Registered PhD Students in Fall by Program 2010-2018



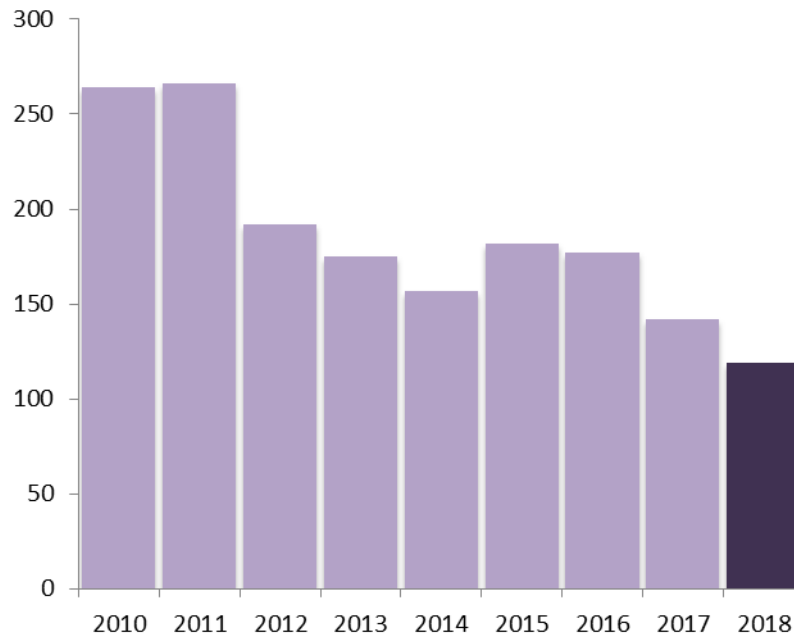


## Certificate Students

total students 119 (15% total)

- 2018 has seen lowest enrollment in Certificate students since 2010
- Decrease enrollment in Healthcare Management due to increased enrollment in MS program at outset (vs taking a few courses in the certificate program and then transferring to MS)
- Decrease in DMICE in 2012 due to end of increased NIH/ERA funding.

### Total Registered Certificate Students in Fall



### Total Enrolled Certificate Students by Program 2010-2018

