



Oregon Institute of  
Occupational  
Health Sciences



Oregon  
Health  
Authority

# *Partnering to Prevent Agricultural Fatalities in Oregon*

Barb Epstien, MPH, CIH, FAIHA  
WestON 2017 Denver, CO







**Surveillance**

**Investigation**

**Assessment**

**Outreach**



Surveillance

Investigation

*Prevention*

Assessment

Outreach

# Why Agriculture?

Experience  
fatalities 9x

1/100 lost time





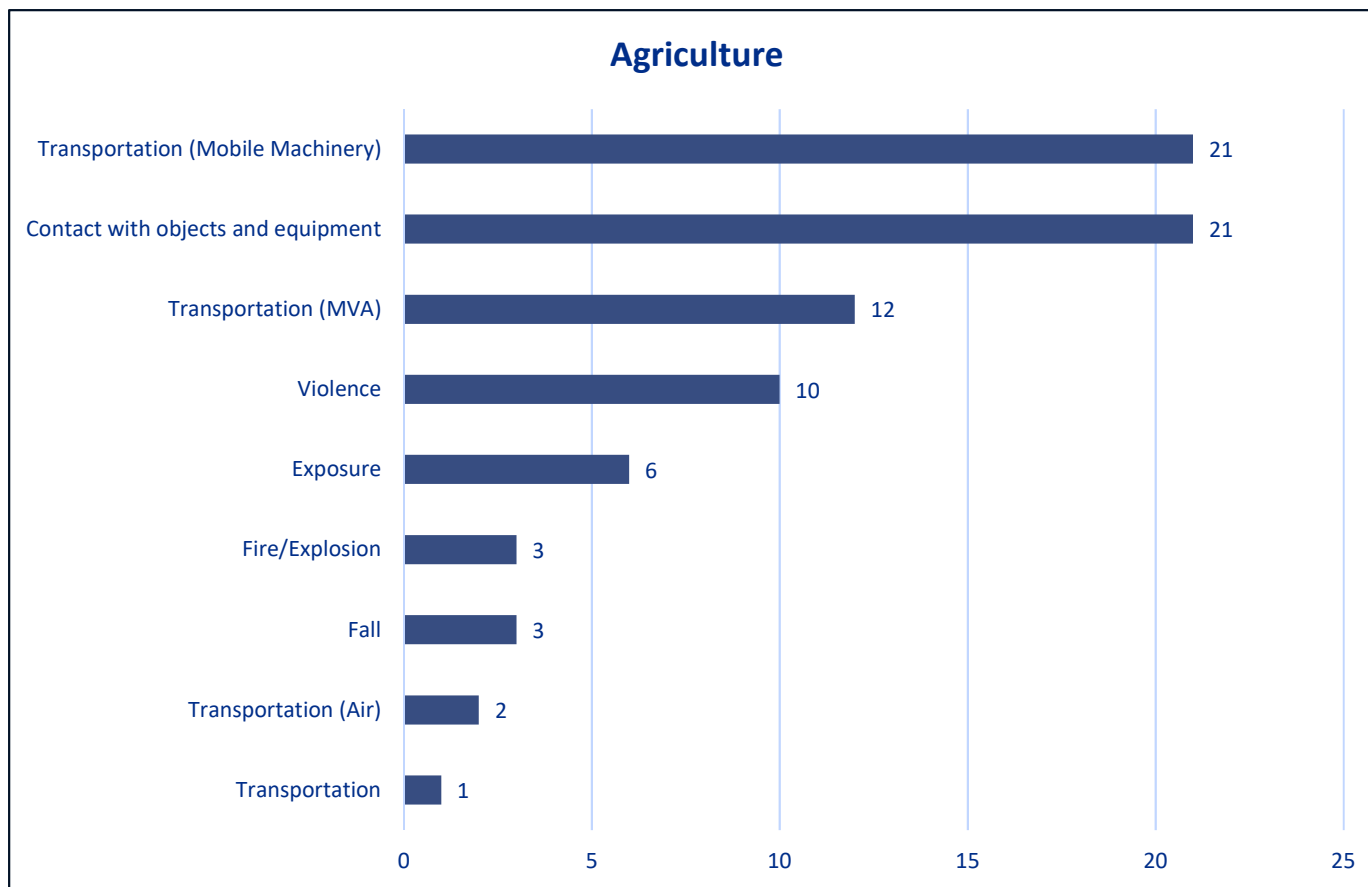
# Why Agriculture?

37% tractors

Improve  
equipment safety



# Agricultural Worker Fatalities in Oregon (2003-2015)



# OR-FACE Partnerships in Ag

- SAIF Agriculture Safety Seminar Series





# SAIF Ag Safety Seminar Series

## Ag seminars

SAIF provides these free agricultural safety seminars throughout the state—including nine in Spanish.



SAIF Agricultural Safety Seminar 2023-24

### Fall Hazards

**Do This:**  
**Don't Do This:**  
 A. Do not work on a roof or ladder. A ladder should be used and not a step ladder. If you are on a roof, make sure the ladder is set up properly. If you are on a ladder, make sure the ladder is set up properly. If you are on a ladder, make sure the ladder is set up properly.

### Aggers & Drivelines

**Do This:**  
 A. When working on a tractor, make sure the tractor is in park and the parking brake is set. Do not work on a tractor unless you are trained to do so. Do not work on a tractor unless you are trained to do so.

### Water Pressure

**Do This:**  
 A. When working on a tractor, make sure the tractor is in park and the parking brake is set. Do not work on a tractor unless you are trained to do so. Do not work on a tractor unless you are trained to do so.

- Other Recommendations:**
1. Do not work on a tractor unless you are trained to do so.
  2. Do not work on a tractor unless you are trained to do so.
  3. Do not work on a tractor unless you are trained to do so.
  4. Do not work on a tractor unless you are trained to do so.
  5. Do not work on a tractor unless you are trained to do so.

- Other Recommendations:**
1. Do not work on a tractor unless you are trained to do so.
  2. Do not work on a tractor unless you are trained to do so.
  3. Do not work on a tractor unless you are trained to do so.
  4. Do not work on a tractor unless you are trained to do so.
  5. Do not work on a tractor unless you are trained to do so.

- Other Recommendations:**
1. Do not work on a tractor unless you are trained to do so.
  2. Do not work on a tractor unless you are trained to do so.
  3. Do not work on a tractor unless you are trained to do so.
  4. Do not work on a tractor unless you are trained to do so.
  5. Do not work on a tractor unless you are trained to do so.

**Can you identify fatal hazards on your farm or ranch?**

**SIX WORKERS ARE KILLED EACH YEAR on farms and ranches in Oregon.**

The worker fatality rate in agriculture is far greater than the average worker fatality rate in Oregon.

Operating a vehicle and working with machinery are the most common sources of fatal injury.

**⚠ DANGER**

**Oregon Fatality Assessment and Control Evaluation**

OSHA, Oregon Department of Agriculture, and Oregon Department of Transportation

www.oregonfatalities.org



# Where the Partnership is Taking Us

## Strategic partnership with SAIF

- Identified ag sub-sector

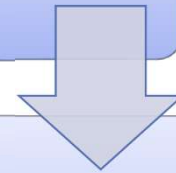
## Social Network Analysis

- Partner with wine growers to identify and analyze their social networks

# Social Network Analysis



Mapping pathways of  
information and influence



Identify network  
strength and weakness





# Social Network Analysis



Mapping pathways of  
information & influence

Identify network strength  
& weakness

Use pathways to target  
safety communications

Goal: Quicker adoption of  
safety practices on  
smaller farms



# Partnering with Oregon Wine Growers

- Facilitated by OSU Dept. of Horticulture Extension





# Oregon Winemaking

**700 wineries,  
13 regions**

**Economic  
impact:  
\$ and jobs**



# Oregon Winemaking

**700 wineries,  
13 regions**

**Economic  
impact:  
\$ and jobs**

**Inherent risks  
& hazards**





# SNA in Wine Growers

## Approaches

**Job shadow(s)**

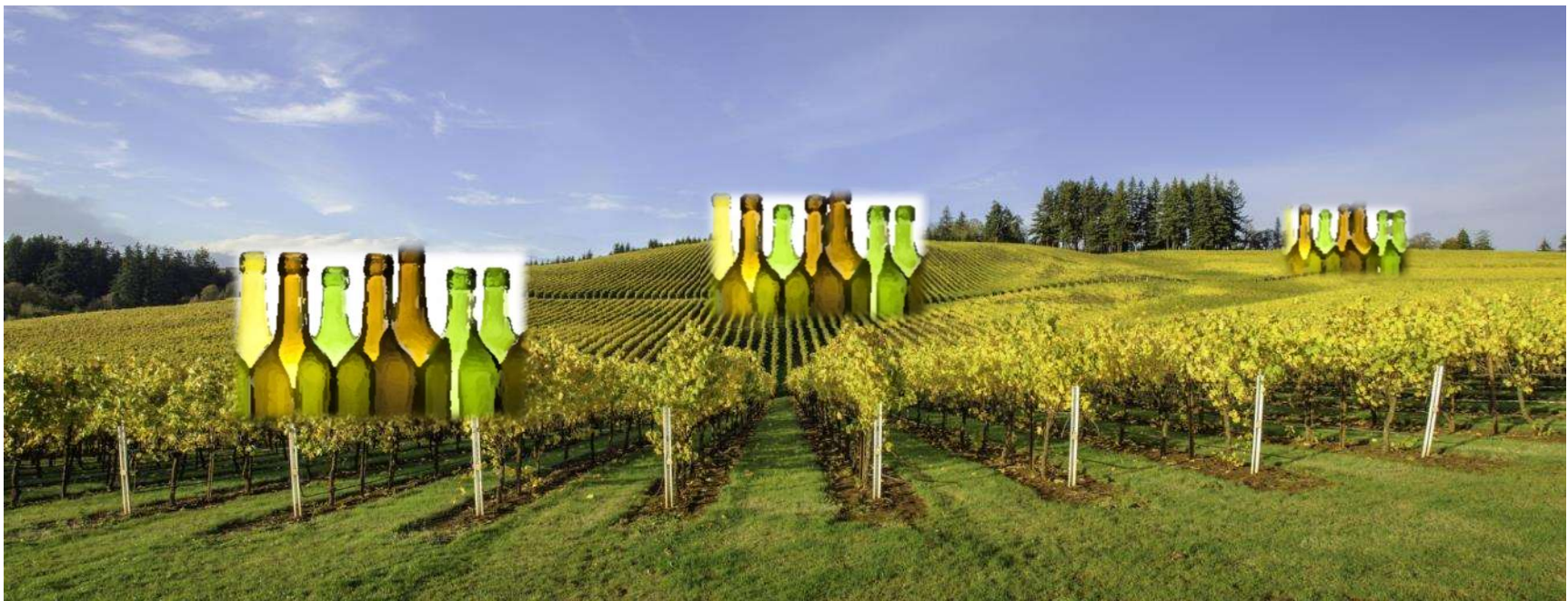
## Goals

**Better sense of vineyard equipment and technology**

**Understand how crews are supervised in the field**

**Learn industry “vocabulary”**

# “Wine Growers”



# SNA in Wine Growers

## Approaches

**Survey**

## Goals

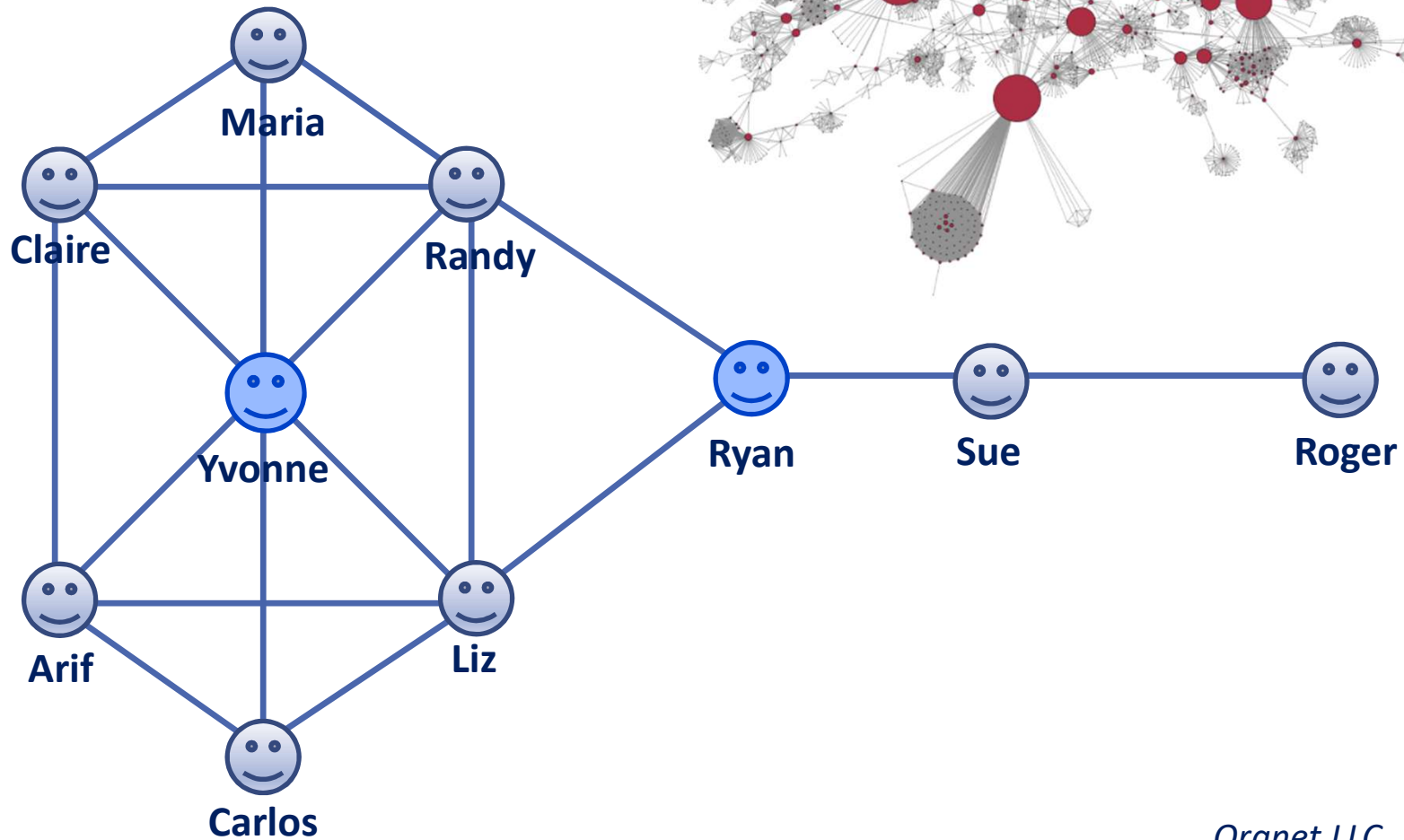
**Go-to person for safety advice**

**Organizational influencers**

**Equipment needs**



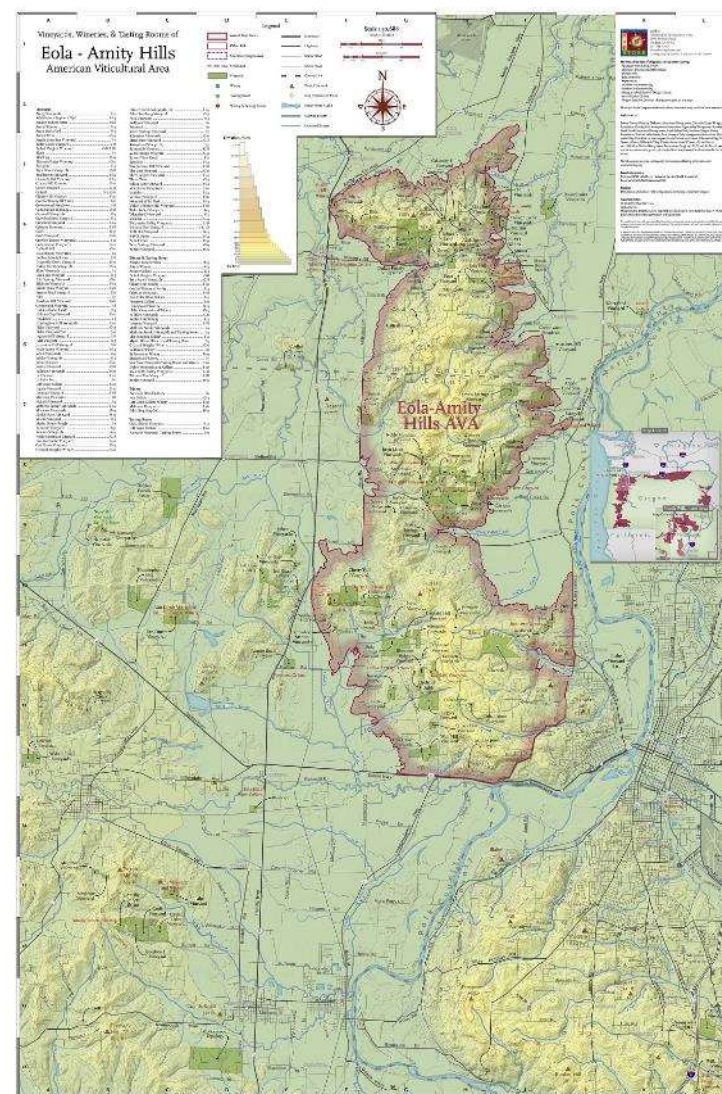
# Social Network Map Examples

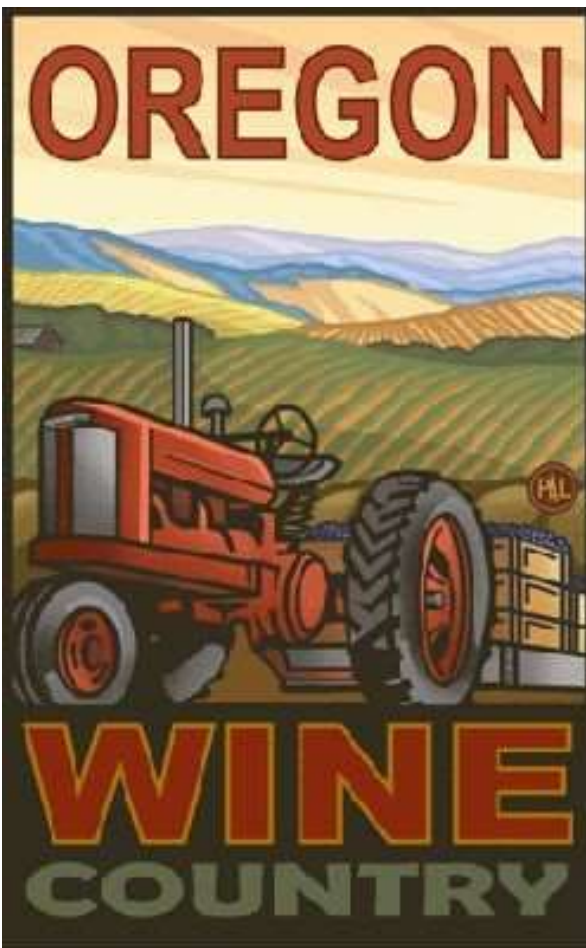


*Orgnet LLC*

# Next Steps

- Survey... ID opinion leader... Safety info to disseminate...
- ♥ Quicker adoption of safety innovations...
- ♥ Prevent occupational fatalities





Visit us at [www.ohsu.edu/or-face](http://www.ohsu.edu/or-face)