

Female and Male Reproductive Systems

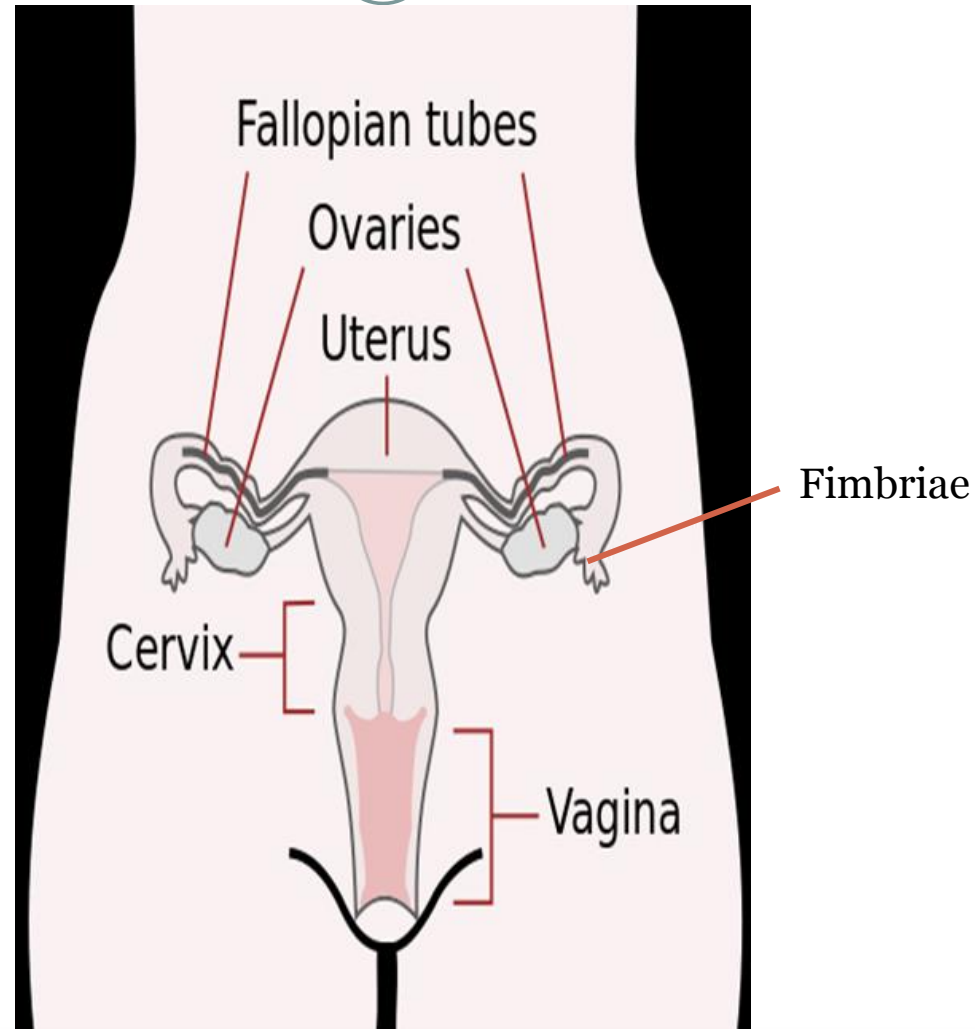


**BIOLOGICAL GOAL:
PRODUCTION OF THE NEXT GENERATION OF
THE SPECIES
PART 1**

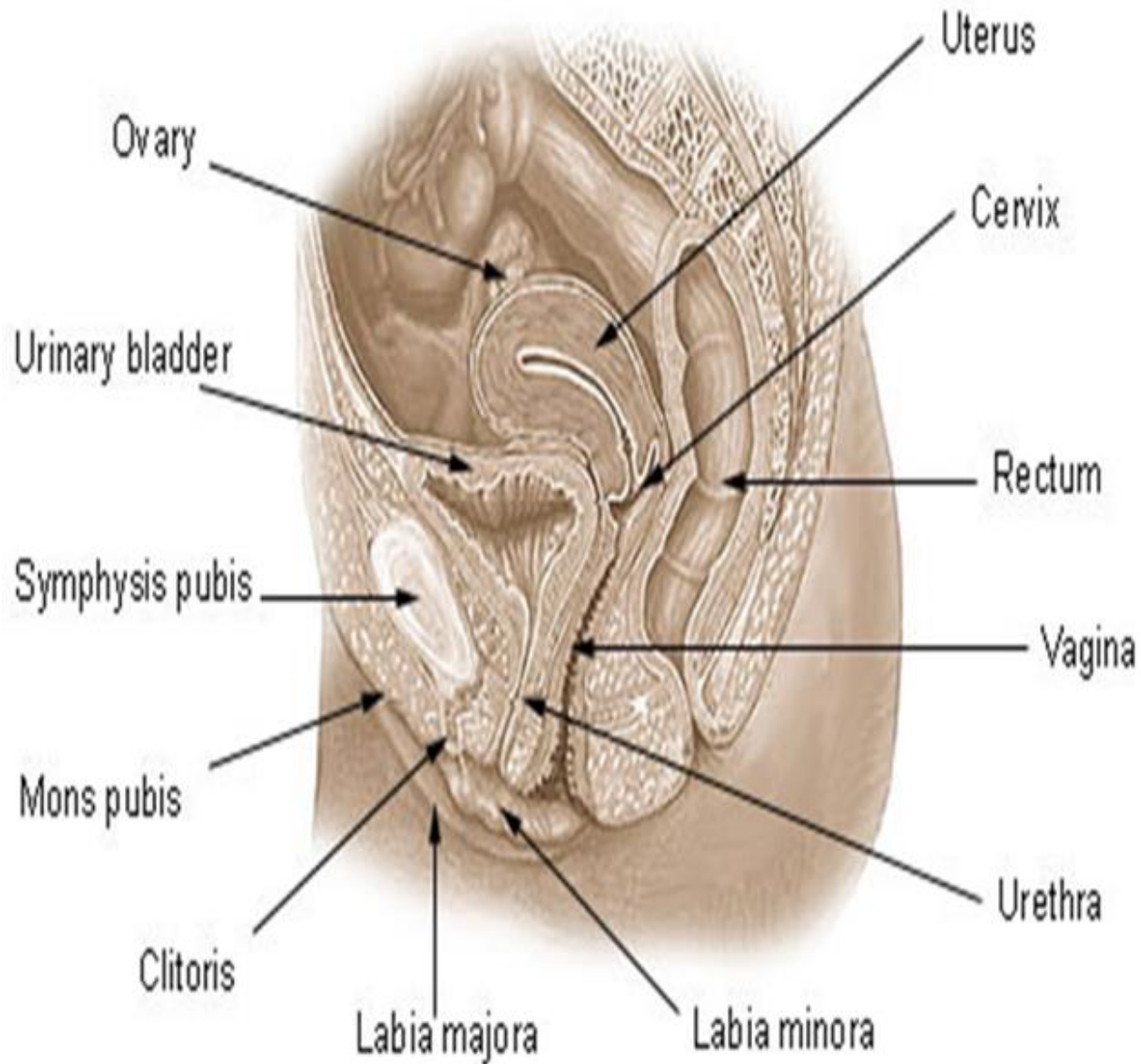


**THIS WORK IS LICENSED UNDER
A CREATIVE COMMONS ATTRIBUTION-
NONCOMMERCIAL-SHAREALIKE 4.0
INTERNATIONAL LICENSE.**

Human Female Reproductive System



Organs of the Female Reproductive System

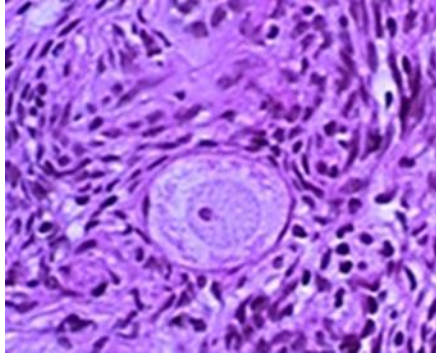


Ovarian Cycle

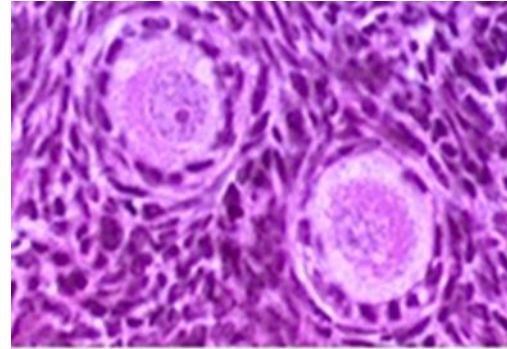


- In order to reach menarche, the **ovarian cycle** occurs in which an oocyte matures and is ovulated.
- There are two parts to this cycle –
 - 1) the **follicular phase** in which the follicle grows
 - 2) the **luteal phase** which occurs after the oocyte is ovulated (or released) and the remaining somatic follicular material forms the corpus luteum.
- This ovarian cycle will continue to occur once a month from puberty to menopause.

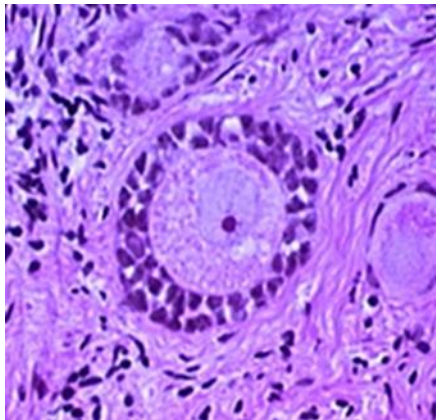
Ovarian Follicles



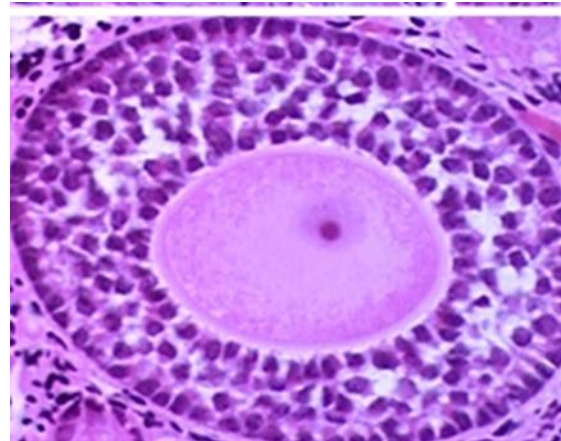
Primordial Follicle



Primary Follicle

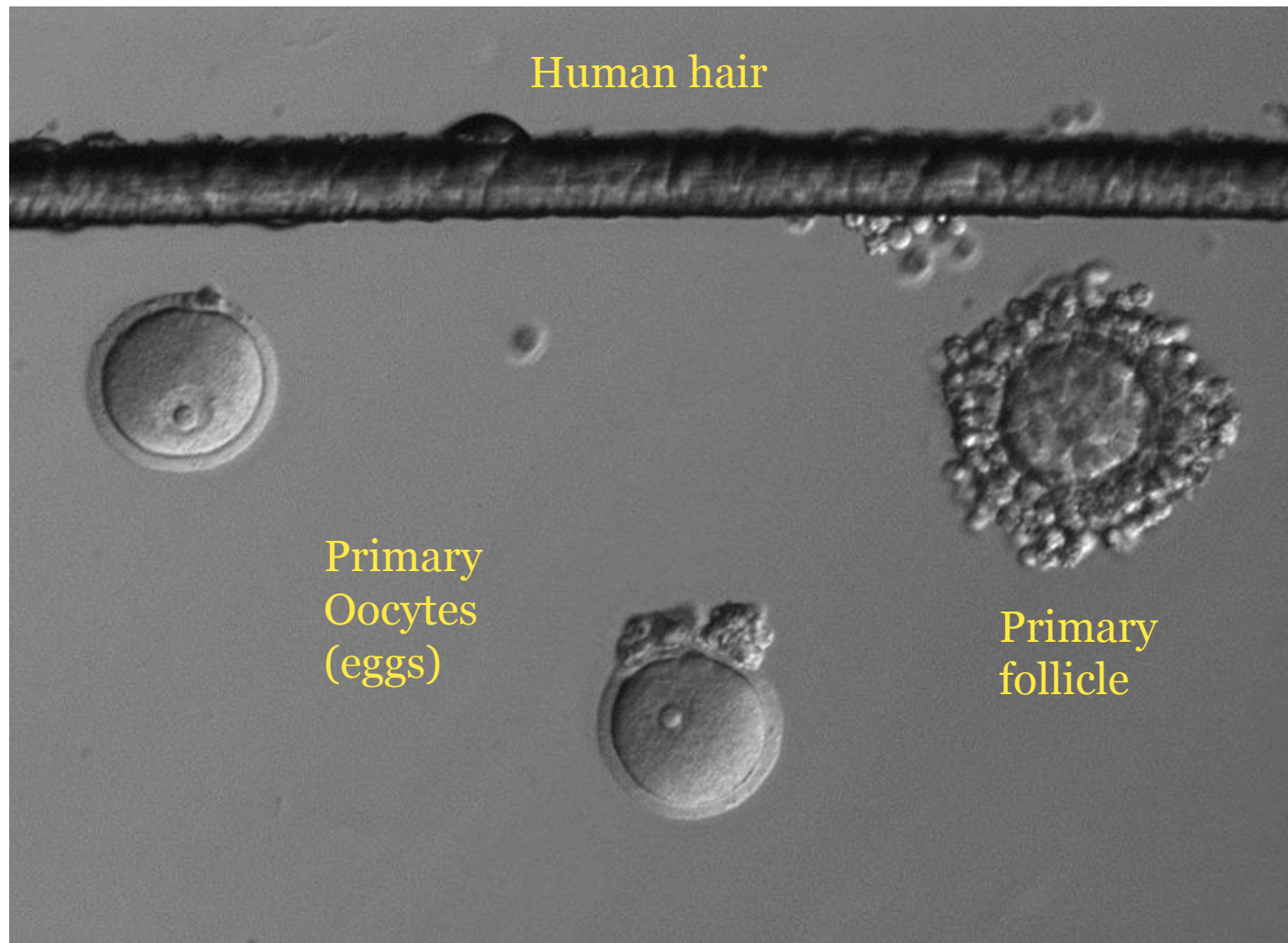


Secondary Follicle



Multilayer Follicle

Relative Size of Follicles and Oocytes



Ovary with Follicles

