



2018—2019 Bioethics Study Group Series

All study groups are held from 12:00—1:00 pm in the Lamfrom Biomedical Research Building (LBRB), room 381
Attendees are invited to bring their lunches and invite their colleagues.

October 10, 2018

A Surgeon, A Nurse and a Chaplain Walk into a Bar...



Fernando Serna
M.Div, BCC

The group will have a conversation about spiritual care at OHSU/DCH, and will discuss questions and quandaries that faith and religion may pose to providers, and how religious faith sometimes challenges assumptions held by medical professionals.

November 14, 2018

Not Wisely, but Too Well: Ten Years of Good Work, Love and Ambivalence in the For-Profit Hospice World

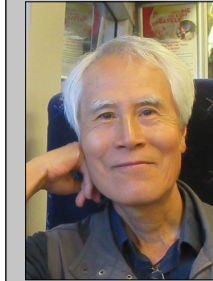


Eric Walsh, MD

Dr. Walsh spent 10 years as the medical director of a for-profit hospice. He will describe the experience and share his opinions while also welcoming questions from friends and colleagues.

December 5, 2018

Ethical Challenges of Medical Diagnosis in the Era of Shared Decision-Making



Sam Muramoto
MD, MA

While making a medical diagnosis is a very complex, poorly defined, and often holistic judgment and action on the part of a physician, it also has a profound impact on each patient's medical care and their entire life and death. In this presentation, Dr. Muramoto will explore several important ethical challenges contemporary medical diagnosis presents, including the issue of consent and decline, confidentiality and truth telling, myth of certainty, and bias and conflict of interest, among others.

January 9, 2019

Conflict of Interest



Vinay Prasad
MD, MPH

Describe the ubiquity of conflict of interest in medicine. Describe the far-reaching negative consequences it has on published articles, expert opinions, and physicians' practice. Consider how conflicts of interest may be better managed and interpreted through disclosure, divesture, audit, and recusal.

February 13, 2019

What do We Mean When We Talk About Suffering?: A Patient-Centered Framework for Conceptualizing Suffering in Medical Practice and Bioethical Discourse

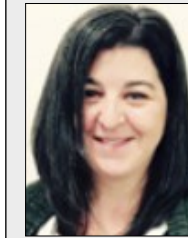


Tyler Tate, MD

The objective of this talk is to analyze the dominant modes of conceptualizing suffering in medical practice and biomedical ethics, with a special focus on palliative care practice. Discussion will also include a practical framework for conceptualizing subjective patient suffering.

March 13, 2019

Dilemmas in the Design and Delivery of Transgender Healthcare



Amy Penkin
LCSW



Jess Guerriero
MSW, MA

This talk will include interactive dialogue about the ethical landscape of transgender healthcare in a program model designed to deliver care to individuals across the lifespan. Speakers will share common dilemmas encountered in the design and delivery of care and describe the multidisciplinary approach to program design and patient related decision making. Examples of patient, provider, and institutional dilemmas will be used to illustrate the complexities encountered in the field of transgender healthcare.

April 10, 2019

Ethical and Philosophical Considerations: End-of-Life Decision-Making in Mexican Americans



Margaret Rising
JD, M.Agr, RN

This session will discuss how Mexican American and Eurocentric cultural and ethical norms collide during End-of-Life decision-making.

May 8, 2019

Physician Aid in Dying: Policy Considerations from Fair Paternalism



Lynn A. Jansen
PhD, RN

This talk will explore the current trends in Physician Assisted Death (PAD) and will describe how fair paternalism (and the social meaning of medicine) should frame policy considerations PAD.

The Center for Ethics in Health Care is pleased to present the 2018-2019 season of the Bioethics Study Group Seminars.

These interactive, inter-professional conversations with expert colleagues are a practical strategy for exploring current ethical issues in healthcare. Bring your lunch and ask a friend to join you in these thought provoking discussions.

If you have questions or are interested in being added to the Bioethics Study Group email list, please contact Molly Willis, willima@ohsu.edu