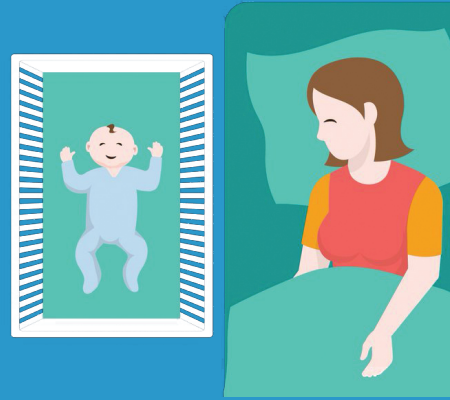


Kisa "dòmni san danje" vle di pou tibebe mwen an?

Retounen dòmi pou tout tan dòmi yo



Pataje chanm ou an, men pa pataje kabann ou an



Itilize yon sifas pou dòmi ki fèm



Pa fimen alantou ti bebe



San danje



KI GEN DANJE



DOERNBECHER
CHILDREN'S
Hospital

503-418-5666

www.doernbecher.com/safesleep