



Clinical Trials in the Community: The Power of Partnerships

Tiffani Howard, PhD

Danita Tracy Carter, BS

Breakout Agenda



Clinical Trials in the Community: *The Power of Partnerships*

- Speaker Introductions
and a bit of background
- Successes
- Challenges
- Discussion/Questions

Meet the Speakers



- Dr. Tiffani Howard PhD
Research Assistant
Dir. Community Outreach
& Engagement

- Danita Tracy- Carter, BS
South Coast
Community Research
Liaison and Health
Educator

Continuing Medical Education (CME) Credit Requirements



Purpose: Educate through example on the power of partnerships for increasing diversity in clinical trials.

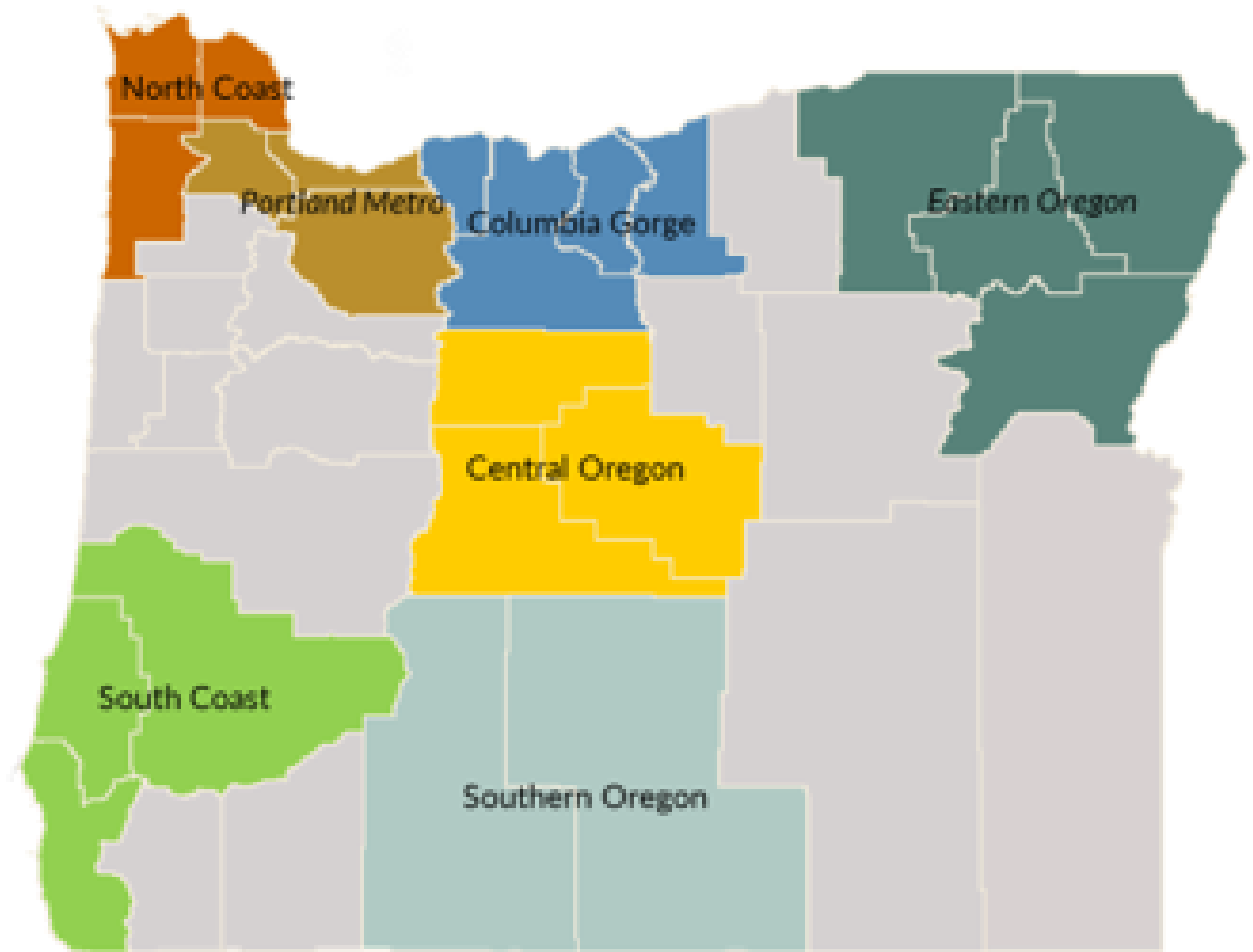


Goal: Share successes and challenges and discuss.



Objective: Through discussion of challenges and successes learn from each other how to best grow partnerships and overcome roadblocks to collaboration

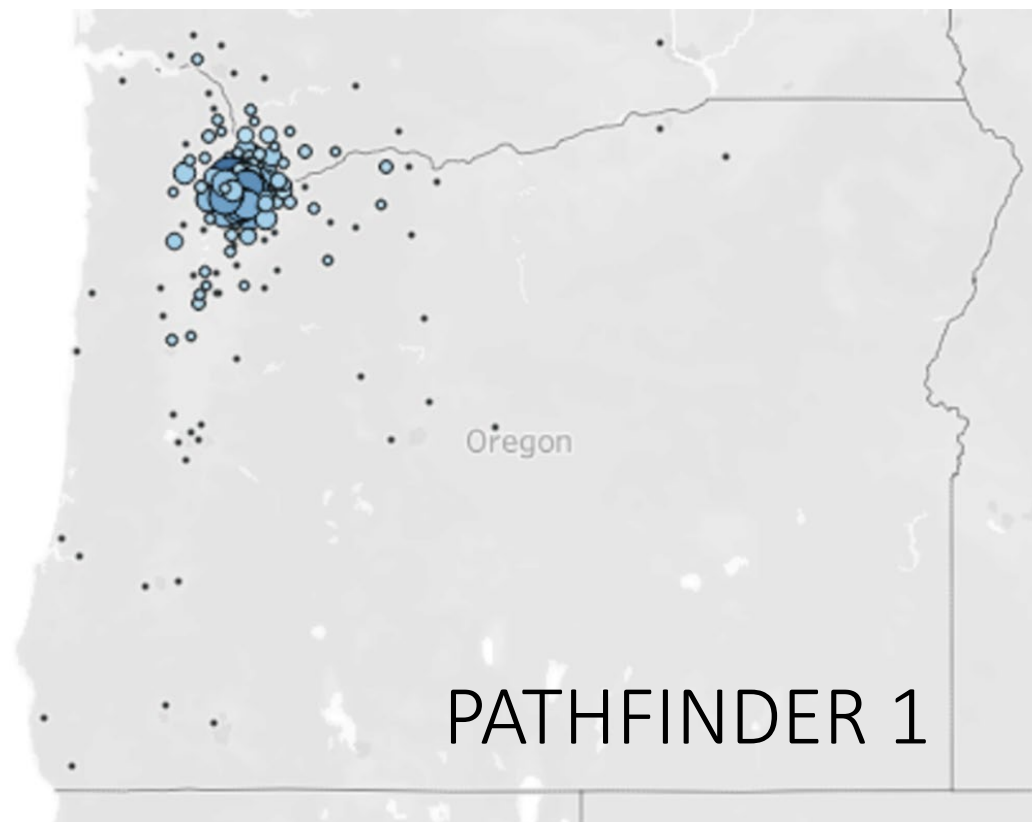
Community Research Liaisons





Successes

We must do
better to
spread the
benefit

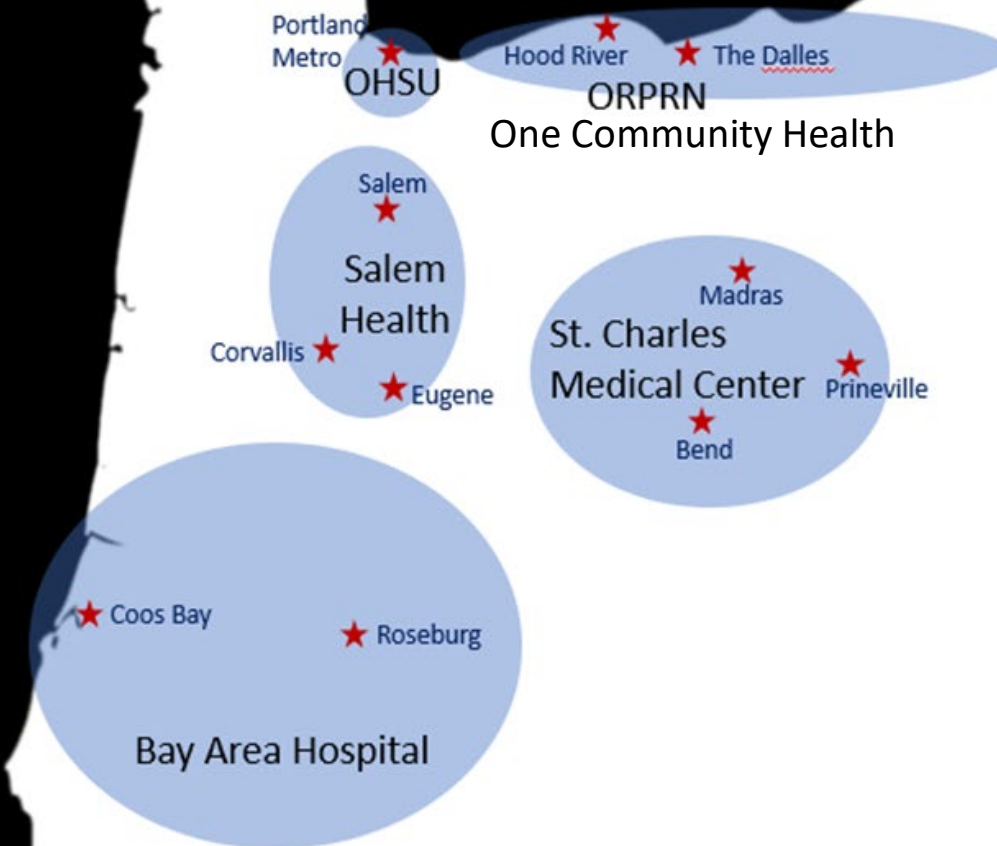


Multi-cancer Early Detection Trial

Enrollment 2019-2020

One Trial Many Partners

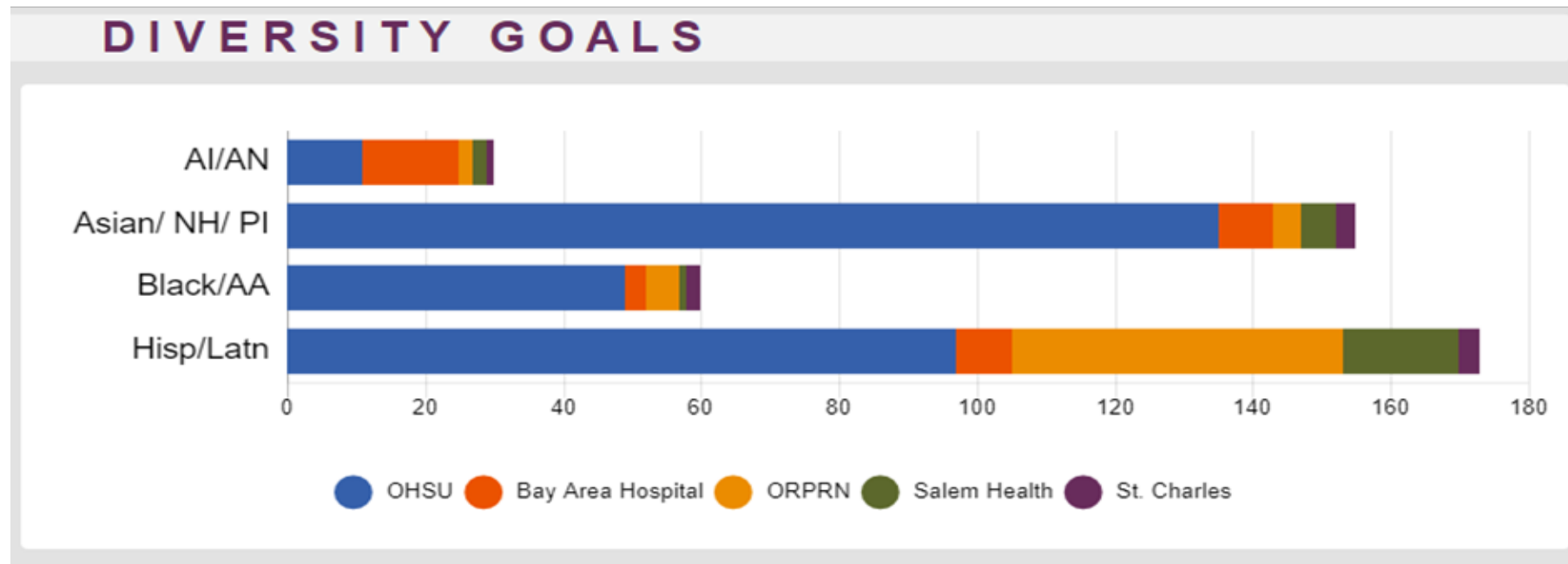
- PATHFINDER 2 Trial
- Multi-cancer early detection
- Many locations to enroll
- A few key locations for clinical follow-up



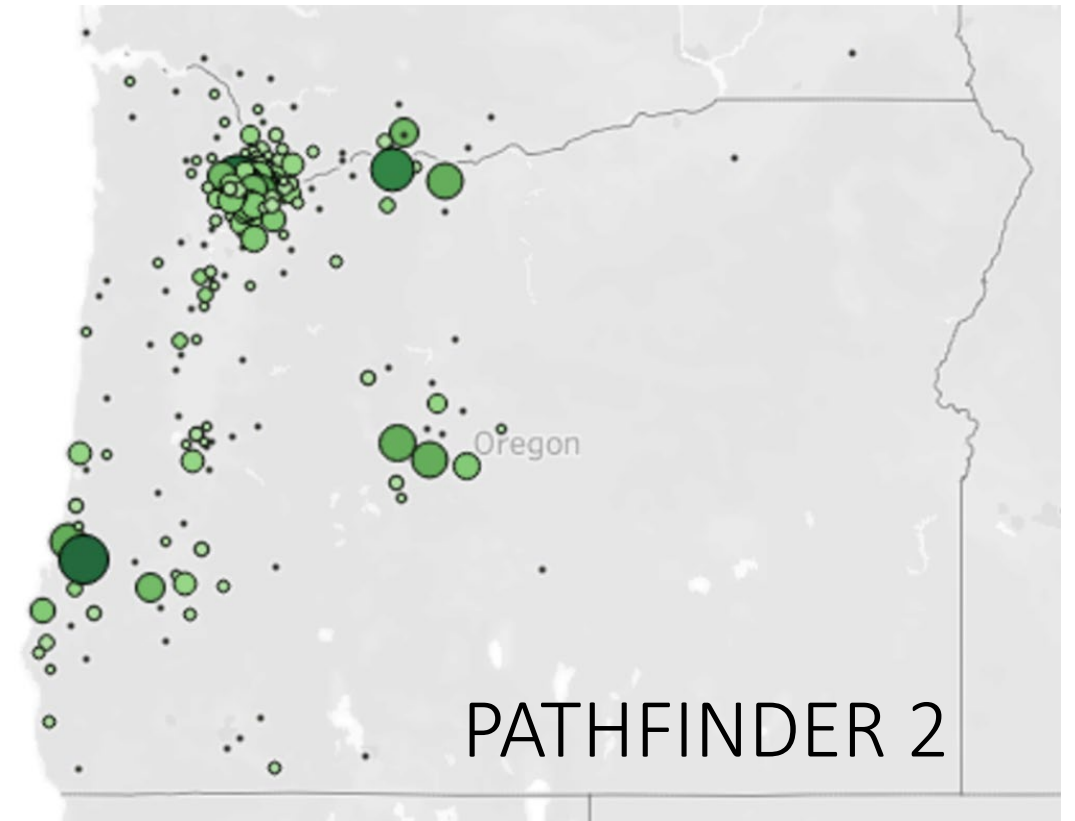
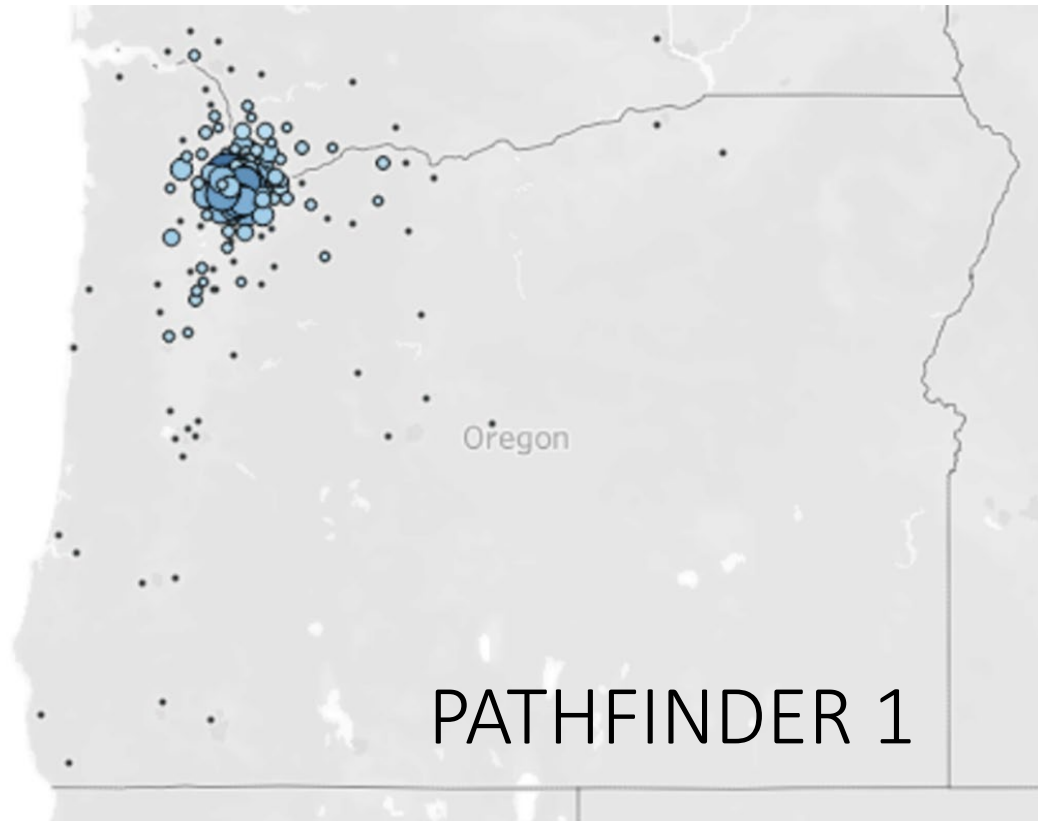
Diversity improves when partnerships grow

	OR Pop	Study 1	Study 2
Total enrolled	4,130,000	1735	2050
% white	84	93	81
% Hispanic/Latino	13	0.4	7
% Black or African American	1.9	0.5	3
% Asian, Native Hawaiian, PI	4.8	1.9	6
% Native Amer/Alaska Native	1.2	0.6	1
% Female	50	68	65
% Rural	33	30	42

Each partner brings its own strengths



The results benefit more Oregonians (and WA too!)



The South Coast as an example



Increasing recruitment in Coos, Curry and Douglas County

- Subsite for PATHFINDER2 study
- Work-ups for signal positives
- Now starting partnering on a new study

Roseburg Cancer Center

- Recruitment site for PATHFINDER2
- Monthly recruitment days

Umpqua Valley BIPOC Group

- Developing an educational workshop around clinical trials and research

South Coast Research Coalition

- Updating on most recent Pathfinder 2 numbers
- ROCRS Subcommittee



Challenges

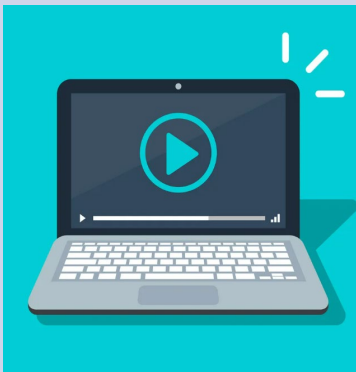
Challenges with Partnerships

**Adds time - from Yes to first
enrolled**

Patient Data sharing

**Choosing a partner: feasibility,
subsites vs enrollment clinic**

Challenges with Recruitment



Clinical Trials
101

**Introducing Clinical Trial before
Clinical Trial Education**



ROCRs

Community Readiness

Discussion

- Share a successful partnership you enjoy? Benefits/challenges?
- Does your organization provide any Clinical Trials Education in your area? What might that look like for your community? What type of organizations would be beneficial to partner with?
- What other steps would be required to lay the groundwork for more trial participation around the state?

