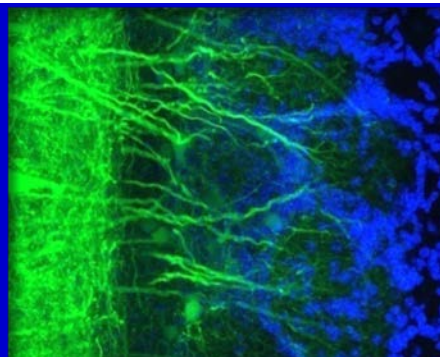


Advanced Light Microscopy Core @ The Jungers Center

BRB 451, 453, 474, 476, 478; MRB 268

Stefanie Kaech kaechs@ohsu.edu 494-3963

Aurelie Snyder snyderau@ohsu.edu 494-4780



Services Offered and Fee Structure – effective January 2014

Service	Peak	Off-Peak
Training Consulting Full service by Core Personnel	\$ 66.00	n.a.
Use of Zeiss Elyra PS.1 Super-Resolution Microscope	\$ 49.50	\$ 16.83
Use of Zeiss LSM 7MP Multi-Photon Microscope	\$ 44.00	\$ 14.96
Use of Zeiss LSM 780 Laser Scanning Confocal Microscope	\$ 39.60	\$ 13.46
Use of Olympus FV 1000 Laser Scanning Confocal Microscope	\$ 33.00	\$ 11.22
Use of API CoreDV Automated Widefield Microscope w/ Deconvolution	\$ 27.50	\$ 9.35
Use of Nikon Yokogawa CSU-W1 Spinning Disk Confocal	\$ 27.50	\$ 9.35
Use of IncuCyte ZOOM per day	\$ 65.00	n.a.
Use of Zeiss Apotome Widefield Microscope	\$ 11.00	\$ 3.74
Use of Offline Workstations	\$ 8.25	\$ 2.81

General comments –

- Peak hour charges apply weekdays between 10 am and 4 pm. Off-Peak rates are discounted by two-thirds and include weekends and holidays.
- Independent and off-peak use of instruments is allowed only after users have undergone training by core personnel. Depending on user experience and instrument, training takes between 1 and 5 hrs and incurs charges for both core personnel and instrument use.
- All charges are based on the time scheduled, whether used as planned or not. Trained users can schedule instrument time through CORES.
- Cancellations within the final 24 hr window prior to scheduled time incur a 75% penalty charge.
- Core personnel are available to assist in image acquisition and analysis at standard hourly fee.
- No user is allowed to schedule more than 8 hrs of peak use per week without approval by the core director.
- Pre-award support available through the Office of the VP for Research.
- Neuroscientists should contact core personnel about eligibility for direct support.