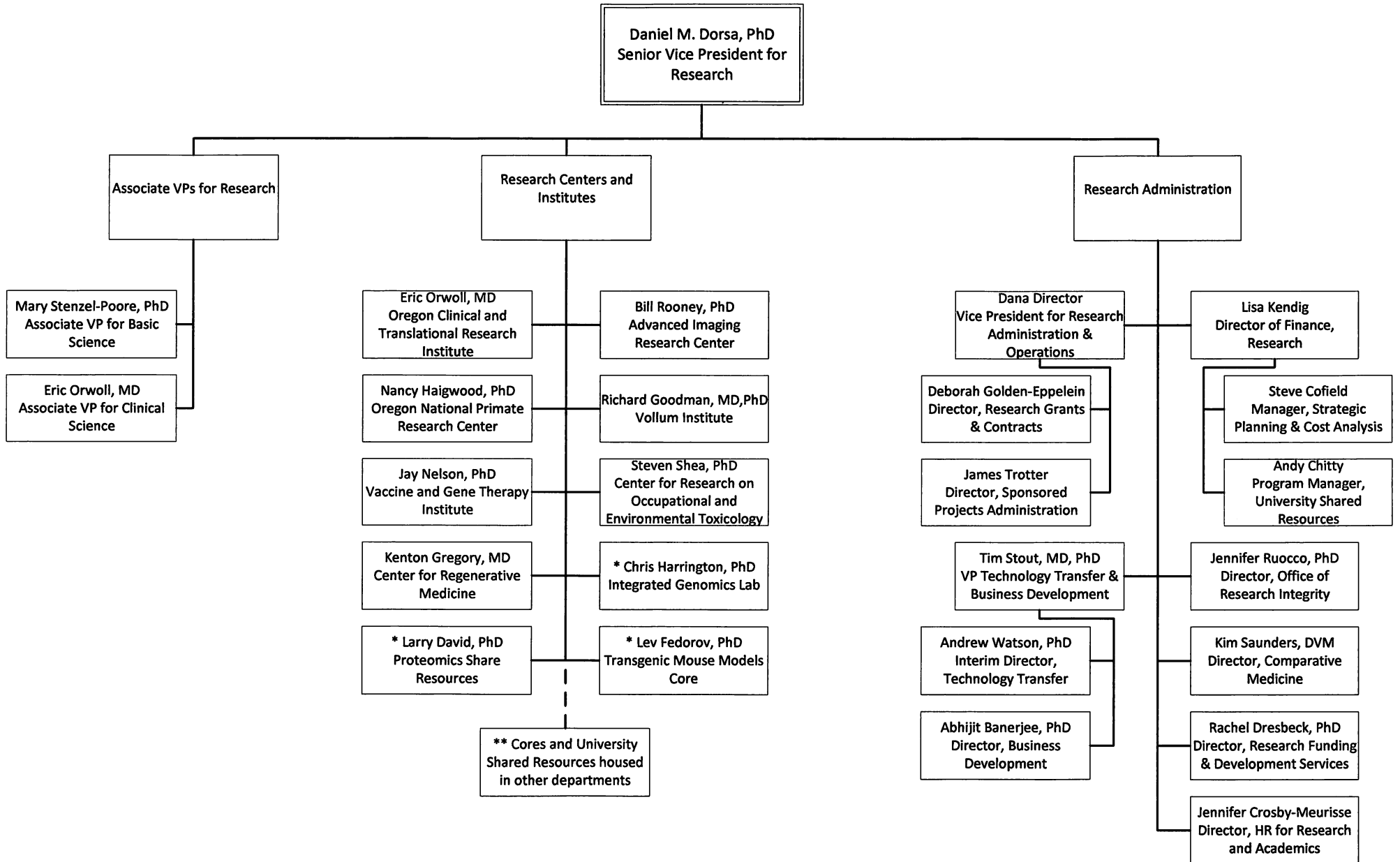


OHSU Research



* Cores and University Shared Resources with direct report to Dr. Dorsa

** Advanced Computing Center, Advanced Imaging Research Center, Advanced Light Microscopy, Bioanalytical/Pharmacokinetics, Biomedical Informatics, Biomolecular Structure Laboratory, DNA Services, Electronic and Instrument Design, Flow Cytometry, Histopathology, Massively Parallel Sequencing