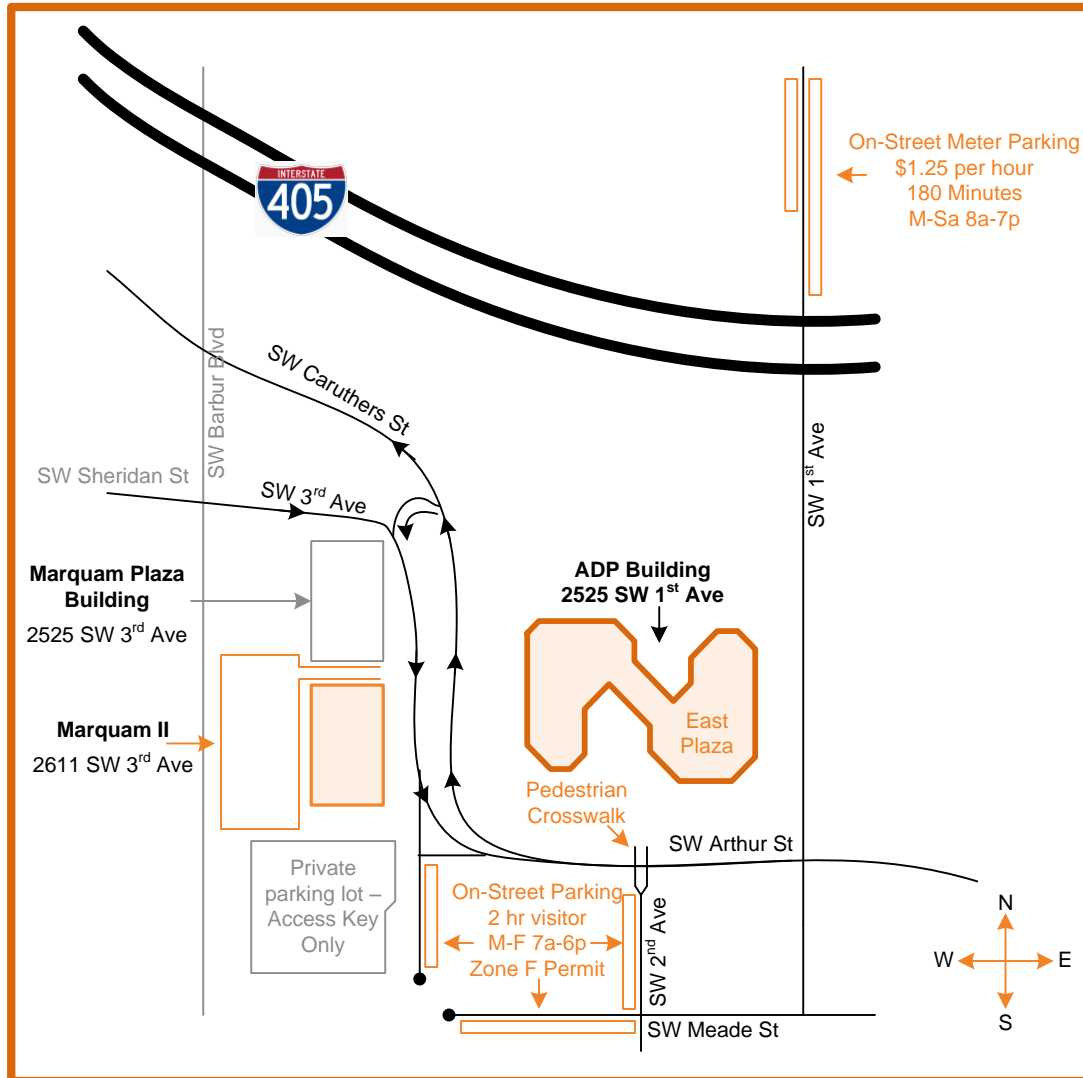


- Institutional Integrity
- Healthcare Integrity
- Information Privacy & Security
- Integrity Education
- Audit & Advisory Services
- Research Integrity

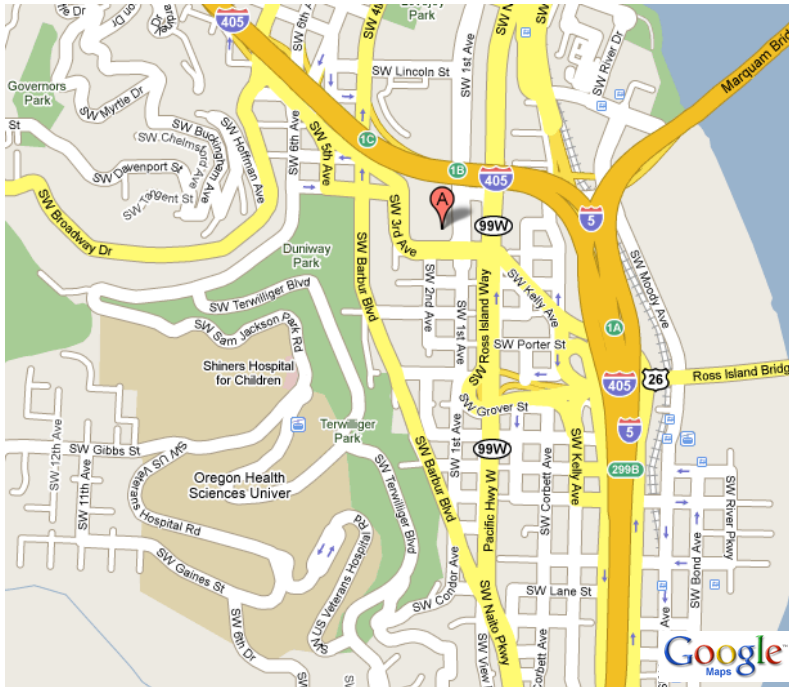


PARKING INFORMATION

- **ADP Building Parking:** If you park under the ADP building for more than 30 minutes, the rates are \$3.50 per hour for the first three hours, with a maximum charge of \$10.
- **Marquam II Lot:** If you have OHSU Marquam Campus 2 Diamond parking permits, you may park in the Marquam II lot for 3 hours.
- **Street Parking:** You may also park on the street for one or two hours in the areas marked visitor parking; access the visitor parking on 2nd and Meade street via 1st Ave. The on-street parking meters can be found north on 1st Ave.
- **Drop-Off or Pick-up:** If you are here for less than 30 minutes (for a pickup), you can park under the ADP building for free.

VISITORS/GUESTS may park in designated Visitor Parking Spots in the Marquam II and Marquam Plaza for 2.5 hours. Marquam II has about 10 visitor parking and Marquam Plaza has about 6 visitor parking. *Please note the visitor/guest parking is only available for non-OHSU employees.*

DAILY PARKING PERMITS may be purchased from the OHSU Parking Office to use in the Marquam II lot for employees or guests. There are 2-hr, 4-hr, and all day passes available from the Parking office. Please visit <http://ozone.ohsu.edu/parking/pages/rsvp.shtml> for more information about Daily Parking Permits.



DRIVING DIRECTIONS to OHSU Integrity Office

2525 SW 1st Ave, Suite 125 | Portland, OR 97201

Directions from OHSU Main Campus:

- Start on SW Sam Jackson Park Road, heading towards downtown Portland.
- Continue straight through the first traffic signal (Sam Jackson Park Road & Terwilliger)
- At the bottom of the hill, Sam Jackson Park Road becomes SW 6th Avenue
- At the next traffic signal, turn right on SW Sheridan and continue straight through the next two traffic signals
- SW Sheridan will curve to the right and become SW 3rd Avenue. Go slowly on 3rd Ave; the OHSU HR Building will be on your right and immediately following is the entrance for Marquam II parking lot. If you have a OHSU Campus 2 Diamond Parking, you can park here for 3 hours.
- The ADP Building is across the street; walk southeast towards the crosswalk and light; cross the street and walk under the ADP building (into the parking lot) to the East Elevator Entrance.
- The OHSU Integrity Office is in Suite 125 (1st floor or L for Lobby floor) in the East Building.

Coming from North of Downtown Portland

- Merge onto I-5 S.
- Merge onto I-405 N via the exit on the LEFT toward CITY CENTER / US-26 / BEAVERTON.
- Take the 4TH AVE. exit- EXIT 1B.
- Turn RIGHT onto SW LINCOLN ST.
- Turn RIGHT onto SW 1ST AVE.
- ADP Building is up on the right corner of 1st & Arthur (entrance to ADP parking garage is on your right)
- We are Suite 125 in the East Building.

Coming from South of Portland

- Merge onto I-5 N
- Take the OR-43 / MACADAM AVE. exit- EXIT 299A- toward US-26 E / ROSS IS. BR.
- Stay STRAIGHT to go onto SW MACADAM AVE / OR-43 N. Continue to follow OR-43 N.
- Turn SLIGHT RIGHT onto SW KELLY AVE / US-26. Continue to follow US-26.
- Turn RIGHT onto SW 1ST AVE.
- The ADP Building is on the corner of 1st & Arthur (entrance to parking garage is on 1st Ave)
- We are Suite 125 in the East Building