

Rural Solutions to Health Inequalities

Lyle Jackson, MD
Chief Medical Officer
AllCare CCO

AllCare Service Area

Service Area

Mid Rogue OHP and CareSource

Josephine County

Cave Junction
Grants Pass
Kerby
Merlin
Murphy
O'Brien
Selma
Sunny Valley
Wilderville
Williams

Curry County (OHP only)

Agness
Brookings
Carpenterville
Denmark
Gold Beach
Harbor
Hunter Creek
Illahe
Langlois
Nesika Beach
Ophir
Pistol River
Port Orford

Jackson County

Ashland Phoenix
Butte Falls Prospect
Central Point Rogue River
Eagle Point Shady Cove
Gold Hill Talent
Jacksonville Trail
Medford White City

Southern Douglas County

Azalea
Glendale



Land of Contrast

- Twice as many coffee shops per capita than the national average (Grants Pass has 1 shop per every 900 people).
- Increasing population of retired people.
- Burgeoning wine, gourmet foods, and craft beer industries.

Inequalities in Southern Oregon

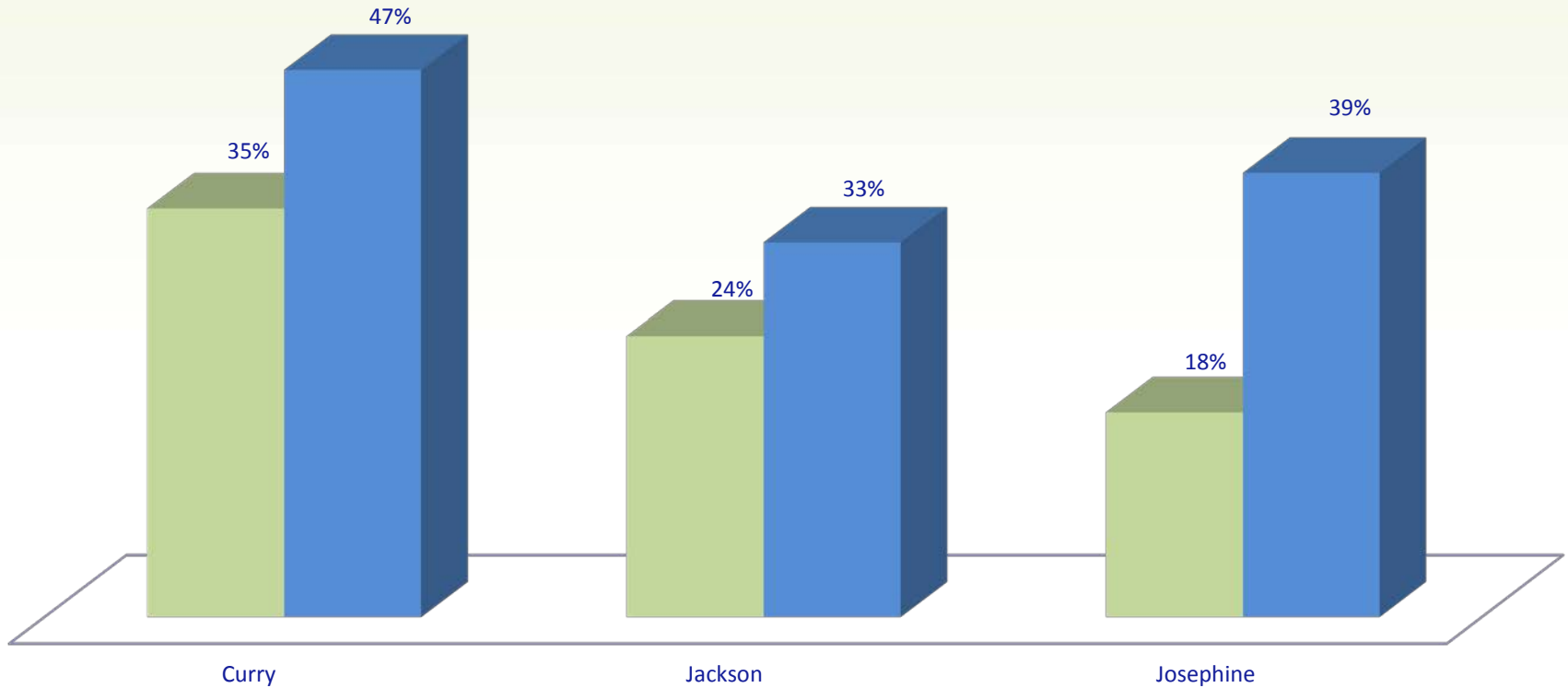
- Extreme income distribution
- Higher than average unemployment rates
 - Curry County = 10.7%
 - Jackson County = 9.8%
 - Josephine County = 11.2%
- More than 25% of children live at or below 100% of the Federal Poverty Line

Inequalities continued

- Food instability: An average of 60% of children receive free and reduced lunch at school.
- Lack of living wage jobs or opportunities for young people.
- Social and geographic isolation.
- Changing demographics.

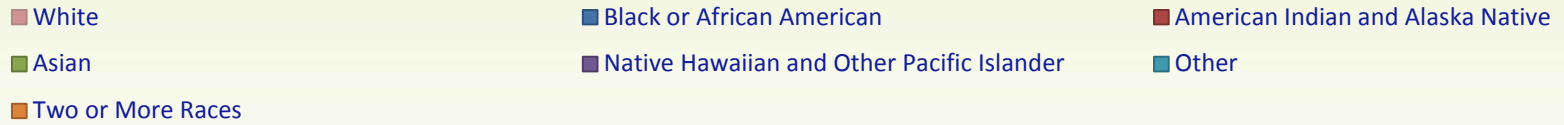
Changing Demographics (2010 Census)

■ Under 19 years ■ Over 55 years



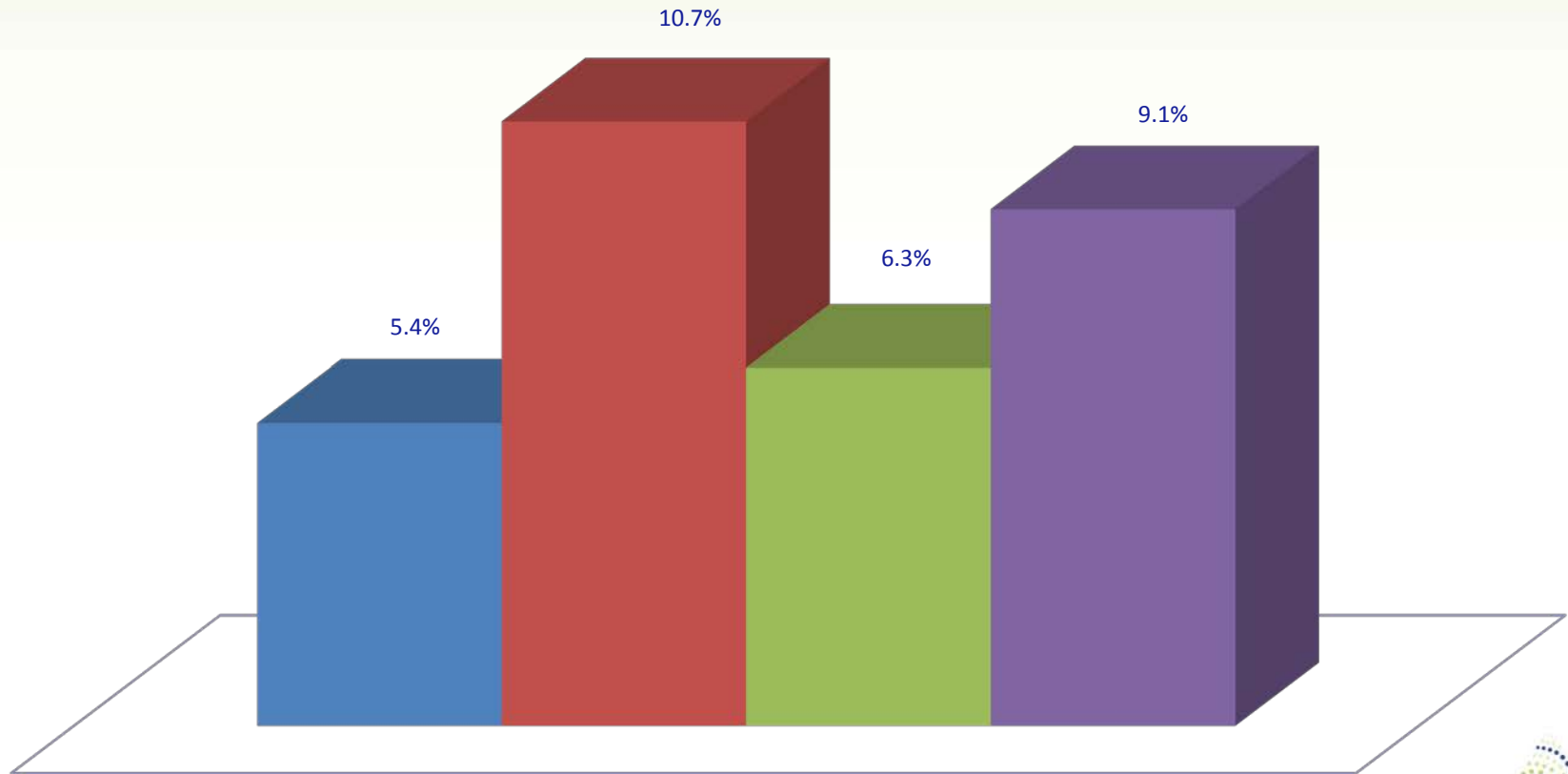
Population: Curry County = 22,364
 Jackson County = 203,206
 Josephine County = 82,713

Racial Demographics of AllCare Region (2010 Census)



Percentage of Population that is Hispanic/Latino (2010 Census)

■ Curry ■ Jackson ■ Josephine ■ AllCare Region



BARRIERS TO HEALTH

Barriers to Healthcare

- Lack of providers, especially in rural areas.
- Difficulty in recruiting and retaining providers.
- Difficulty in maintaining a provider network that is culturally and linguistically diverse amongst all staff levels.
- Small number of dental providers that accept OHP.

Geographic Barriers

- Distance to both primary and specialty care.
- Reduced access to public transportation.
- Stratification of provider panel with higher concentrations of providers in some communities and lower numbers in others.

Safety Net Fragility

- Diminished public health funding.
- Consolidation of schools.
- Diminished county funding for public safety, prevention, and safety net services.
- Reduction in timber subsidy payments, leading to closure of libraries, reduction in criminal justice/policing, and other services.

SOLUTIONS

Strengthening Provider Network

- Increase & strengthen private network of independent providers which comprises the majority of our service area.
 - Active recruitment of providers to the area.
 - Alternative payment methodologies.
 - Supporting the PCPCH Model.
- Supporting Community-based efforts:
 - FQHCs.
 - School-based health clinics.
 - Integrating Mental Health, Addictions, and Primary Care via co-location of providers.

Working to reduce Geographic/Transportation Barriers

- Telemedicine.
- Working to strengthen Non-Emergency Medical Transportation system.
- Through flexible spending dollars we are coordinating and providing needed transportation to wellness programs and activities.
- Co-locating providers and services in isolated areas

Strengthening Health Care System

- Continuous efforts to recruit and hire bilingual staff.
- Supporting efforts to train healthcare workers throughout the provider types.
- Support of tuition help and debt relief efforts for the full array of healthcare workers.
- Contracting with SEIU to provide additional in-home services not covered by Medicaid.

Supporting Coordinated Care throughout our Provider Network

- Embedded Clinical Support Services
 - OB Behavioral Health Worker/Doula at Women's Health Center Josephine County
 - Floating Mental Health Counselor in PCP Clinics
 - Community Health Worker in FQHCs/Safety Net Clinics: Siskiyou Health Center, La Clinica Del Valle, Community Health Center
 - Public Health Nurse in Josephine County Public Health *
 - Public Health Nurse in Curry County
 - CHW/Peer Wellness Worker in Jackson County Public Health *
 - Community Health Worker in Providence Medford Medical Center

* In development

Community Health Worker

My community. My health plan.
Sponsored by Mid Rogue Independent Physician Association



LTC – contracted with RVCOG in-home care workers

Dec 2013

¹ Community Health Worker

My community. My health plan.
Sponsored by Mid Rogue Independent Physician Association



Strengthening AllCare Staff

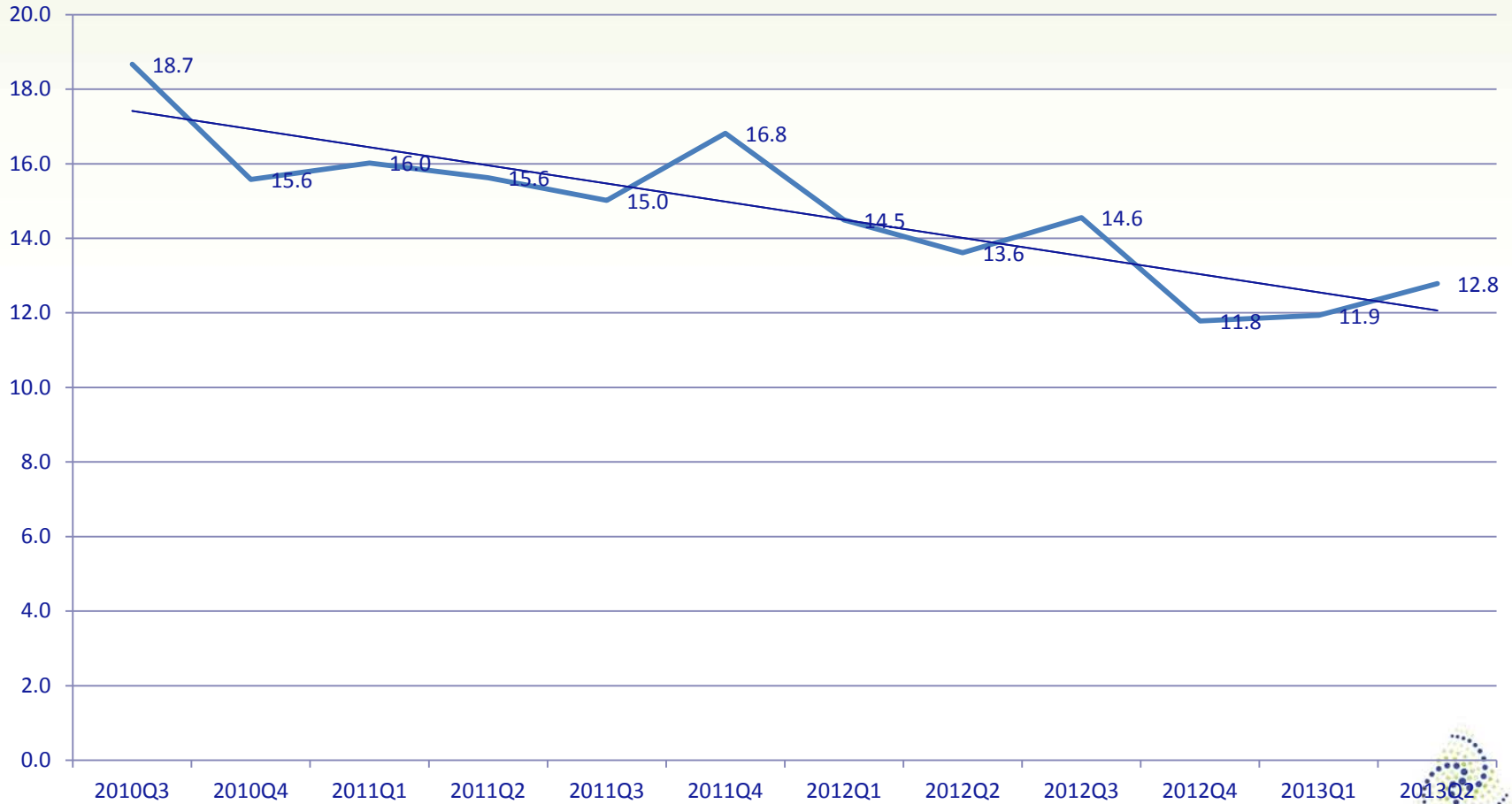
- Oral Health Director
- Pharmacy Director
- Psychiatric Medical Director
- Inclusion of Community Health Workers in case management teams.

Supporting Community Efforts

- Supporting:
 - Health Navigator and Tobacco Cessation groups at Grants Pass Gospel Mission.
 - Community Garden in Grants Pass that supports the food bank.
 - County Public Health Departments – Chronic condition outreach.

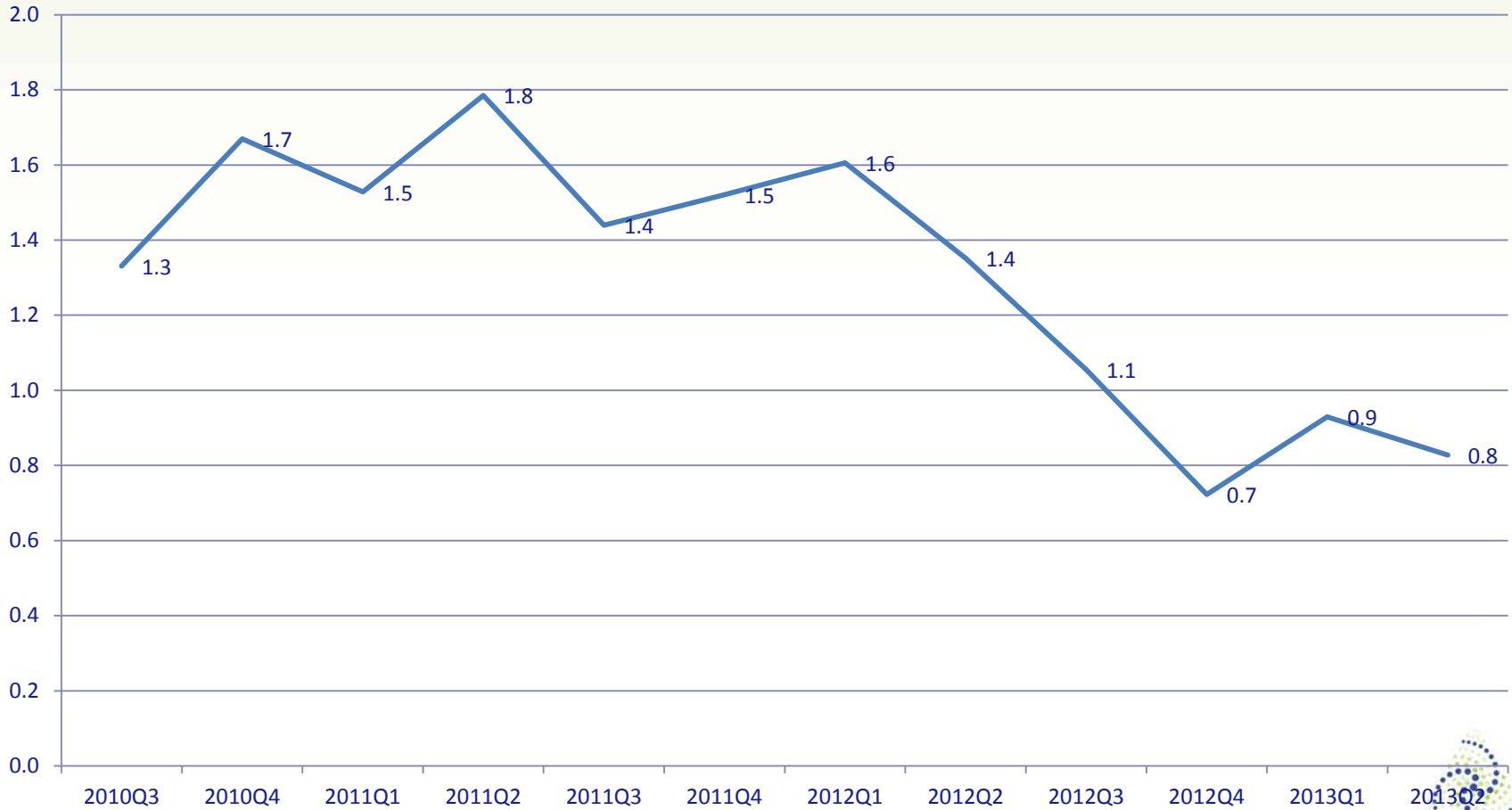
AllCare Admissions per 1000 member months

AllCare Admissions per 1000 member-months



AllCare Re-Admissions per 1000 member months

AllCare Readmissions per 1000 member-months



My community. My health plan.

Sponsored by Mid Rogue Independent Physician Association





AllCare

HEALTH PLAN

My community. My health plan.

Sponsored by Mid Rogue Independent Physician Association, Inc.