

# THE TRIPLE AIM: URGENT ACCESS TO CARE

MAKING A DIFFERENCE TO IMPROVE OUTCOMES IN  
STROKE CARE



Susie Fisher, RN    Providence Telestroke Network

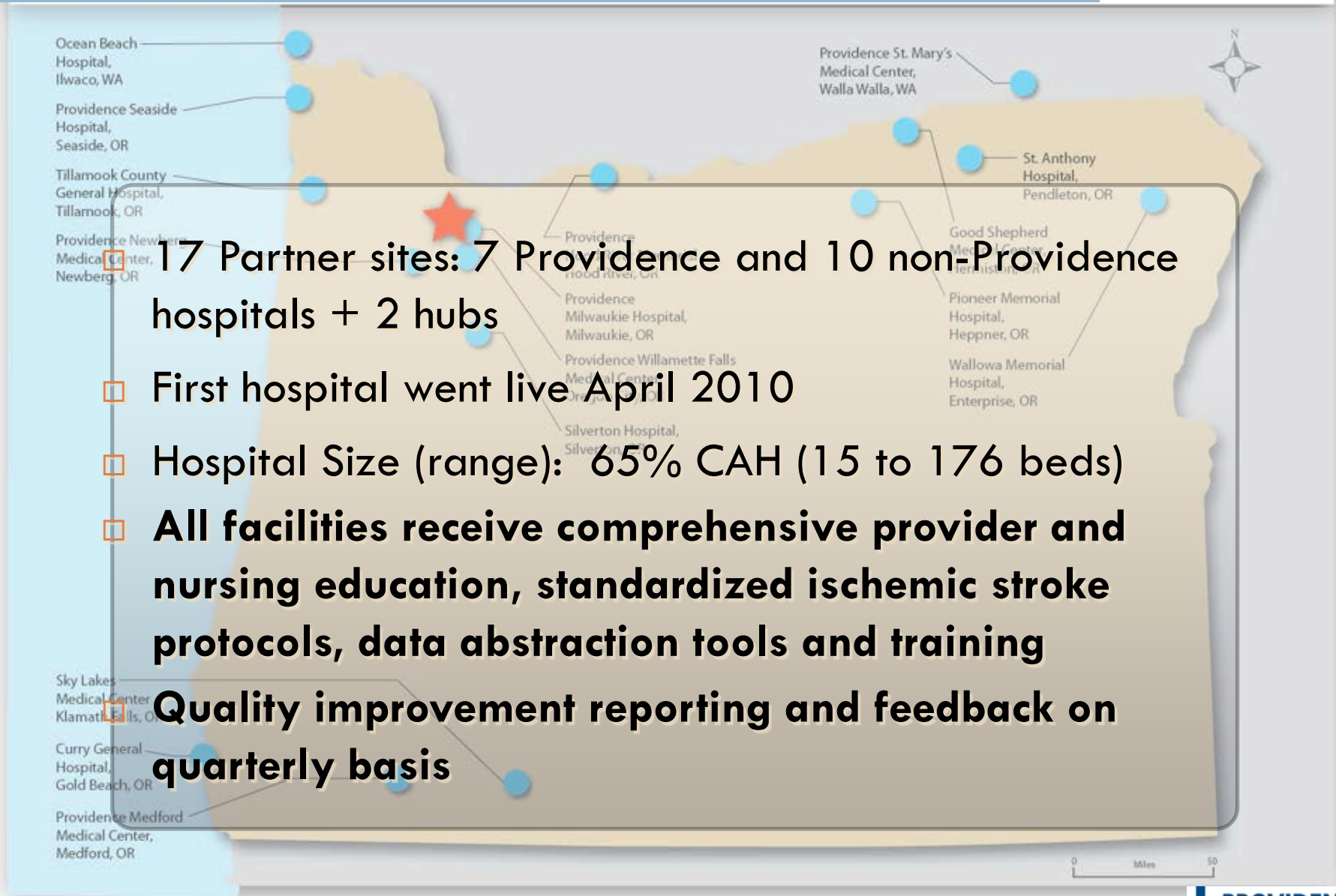


# Why Telestroke?

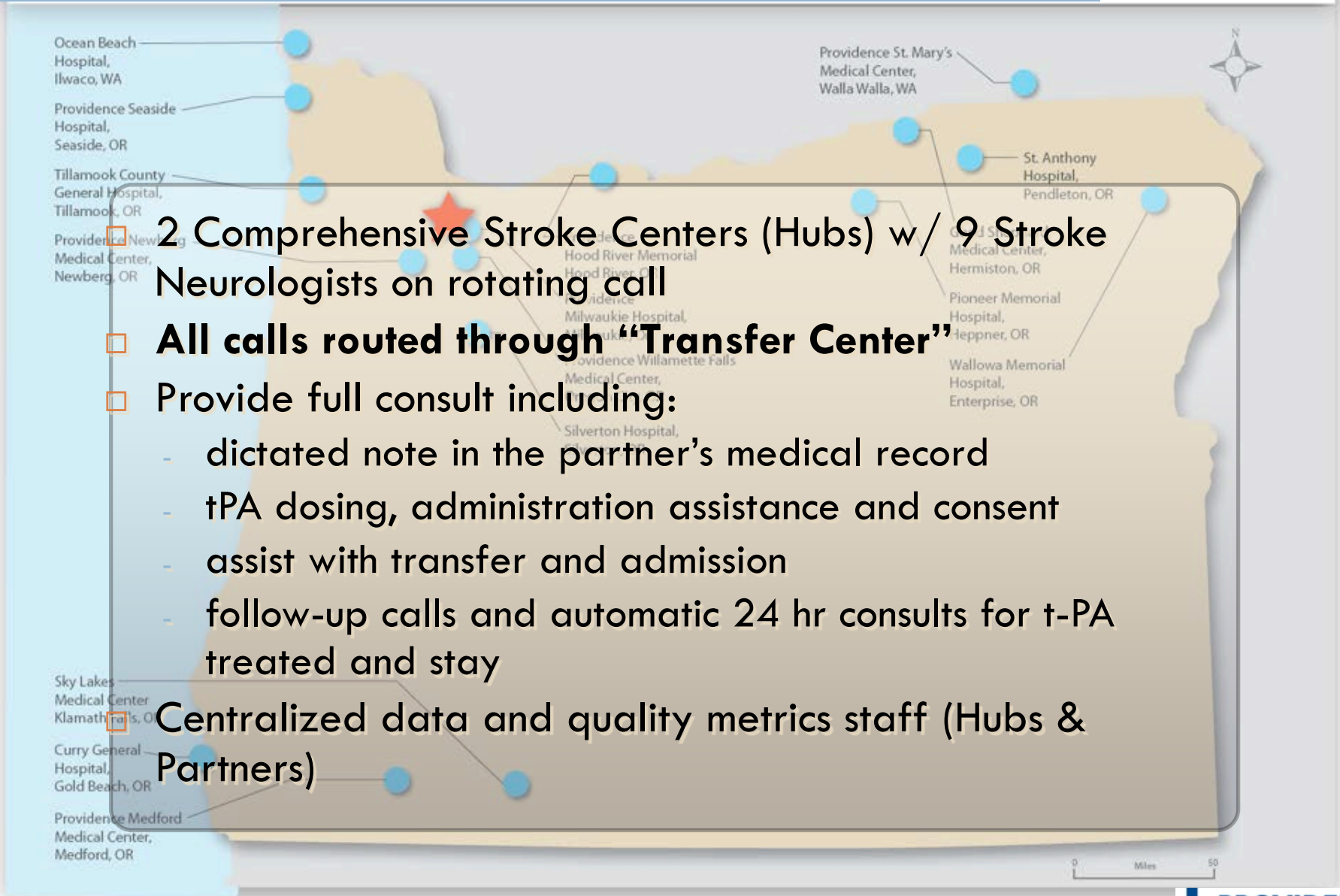
## Rural-Urban Stroke Care Gap in Oregon

- Oregon has the highest stroke death rate in the NW and ranks 13th in US after “Stroke Belt” states for highest death rate (TN,AR,AL,OK,SC,NC,MS,LA,GA,MO,KY,TX)
- All 12 JC Primary Stroke Centers in state of OR reside in metropolitan areas
- More than 1 in 4 Oregonians live >60 min from a stroke center
- < 10 certified stroke neurologists in entire state of OR @ start of network
- Providence Health Systems cares for ~18% of stroke victims in Oregon with 2 Primary Stroke Centers in Portland, OR and 1 in Medford.

# Providence Telestroke Network



# Providence Telestroke Network



# Providence Telestroke Network – how it looks

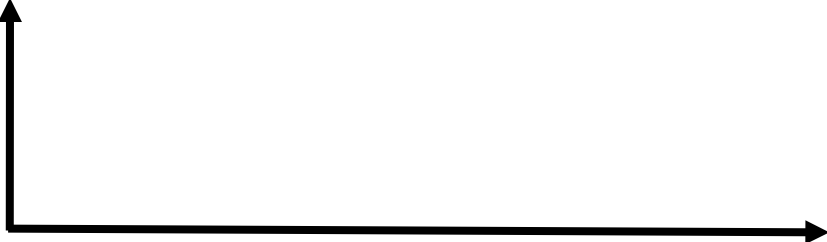
Spoke/Partner (Patient)



Hub (Stroke Neurologist)

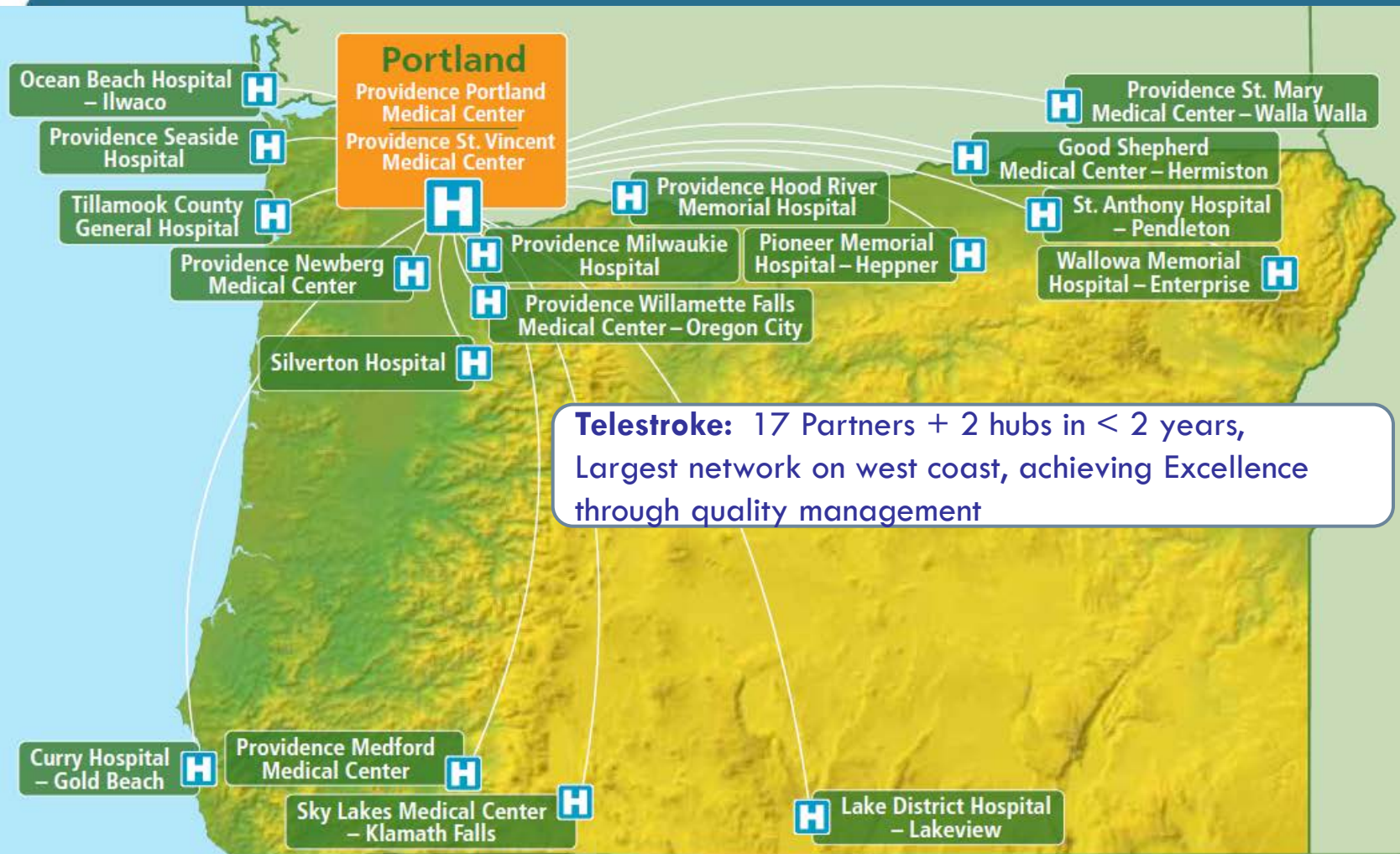


Broadband Internet



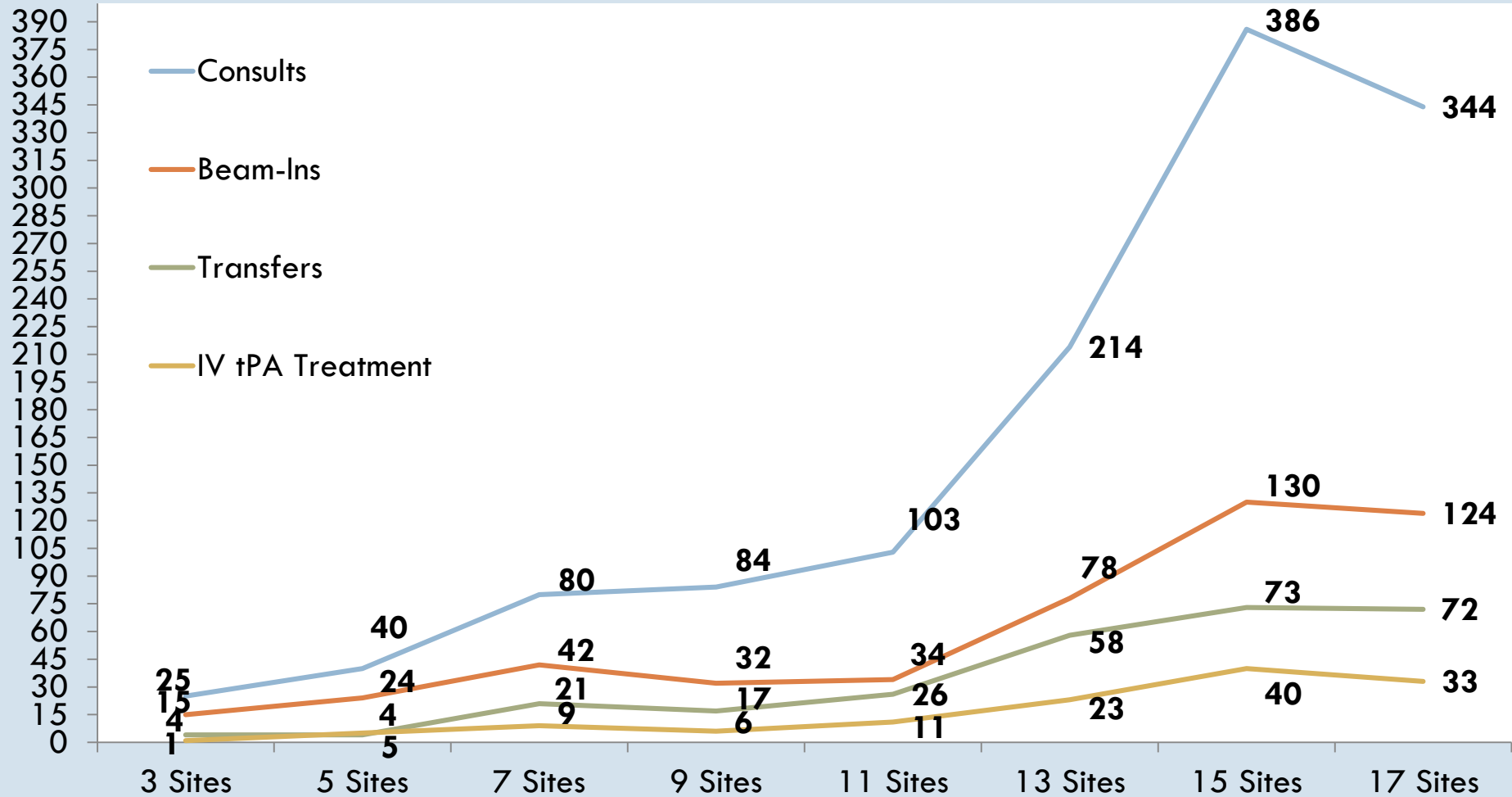
# Providence Oregon Telemedicine Network

July 2012



# Telestroke Activity Across the Network

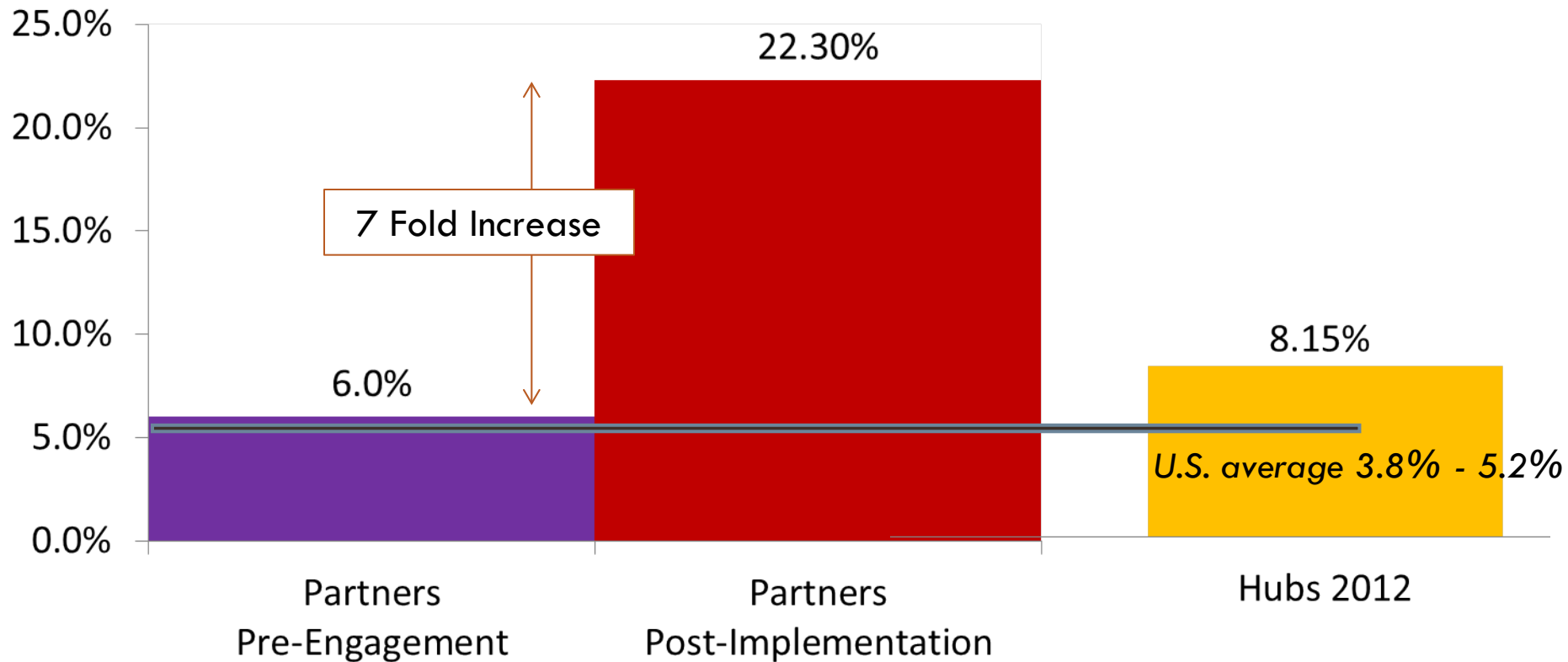
## April 2010 – December 2012



	Consults	Beam-Ins	Transfers	IV tPA Treatment
17 Sites to 8/2013	616	223	120	59
Total over life of the program	1892	702	395	187



# Percent Treated with IV-tPA Among Ischemic Strokes



	Partners (n=9)		Hubs (n=2)
	Pre-Engagement (1-2 years prior)	Post-Implementation (6 months to 2 years)	
Number of:			2012
IV tPA Treated	13	90	60
Ischemic Strokes	217	403	736



# Provider Partner Experience

9

- Surveys submitted for all consultations to requesting provider, continuously monitored by TS team.
- Average consult call back time 2.5 min
- “This was invaluable in the timely care of this patient with an unusual presentation” (ER Physician, Hood River)
- “I remember knowing what was going on but not being able to communicate, but it was so comforting to know there was an expert right there with me”  
(Seaside patient)

# Providence Telestroke Network

## Measuring Success

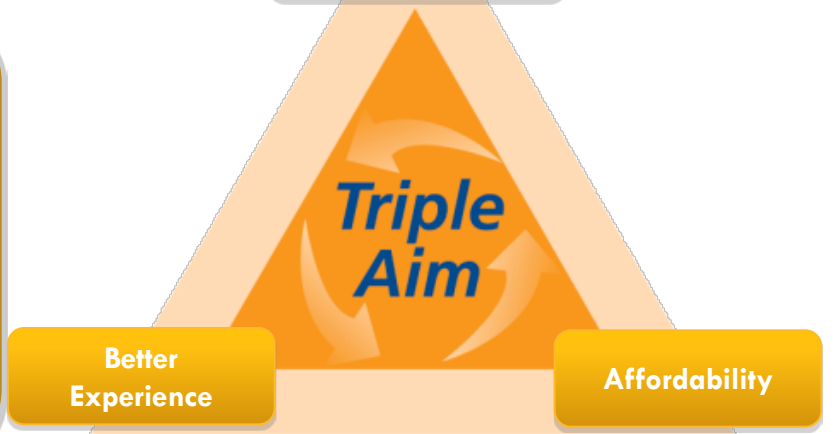
**Improved outcomes**

**7 Fold increase in tPA Treatment, ... similar to comprehensive stroke centers (hubs)**

Population Health

**Improved access**

**>1800 Stroke consults since April 2010**



**Lower cost**

**37% reduction in patient transfers out of community (Approx \$20K per transfer)**

*Our measure for success*

**Building lasting relationships**