

GORGE ACCESS PROGRAM

A local program to provide medical care for the uninsured

Trish Elliott, RN

Ellen Larsen, RN

Background for Program

- County Health Rankings report that 28% of adults living in Hood River County do not have health insurance and 24% of those under 65 years have no health insurance.
- This is not an insurance program.
- Eligibility: Hood River County resident, up to 200% of FPL
 - No age restriction Eligibility is for 6 months
- Contribution to care – 100% FPL = \$25 150%FPL = \$30 200% FPL = \$35
- Included services for a single contribution of care payment include office visit with provider, basic lab and imaging services, including mammogram, and mental health services.

How to address this issue in an otherwise high county ranking:

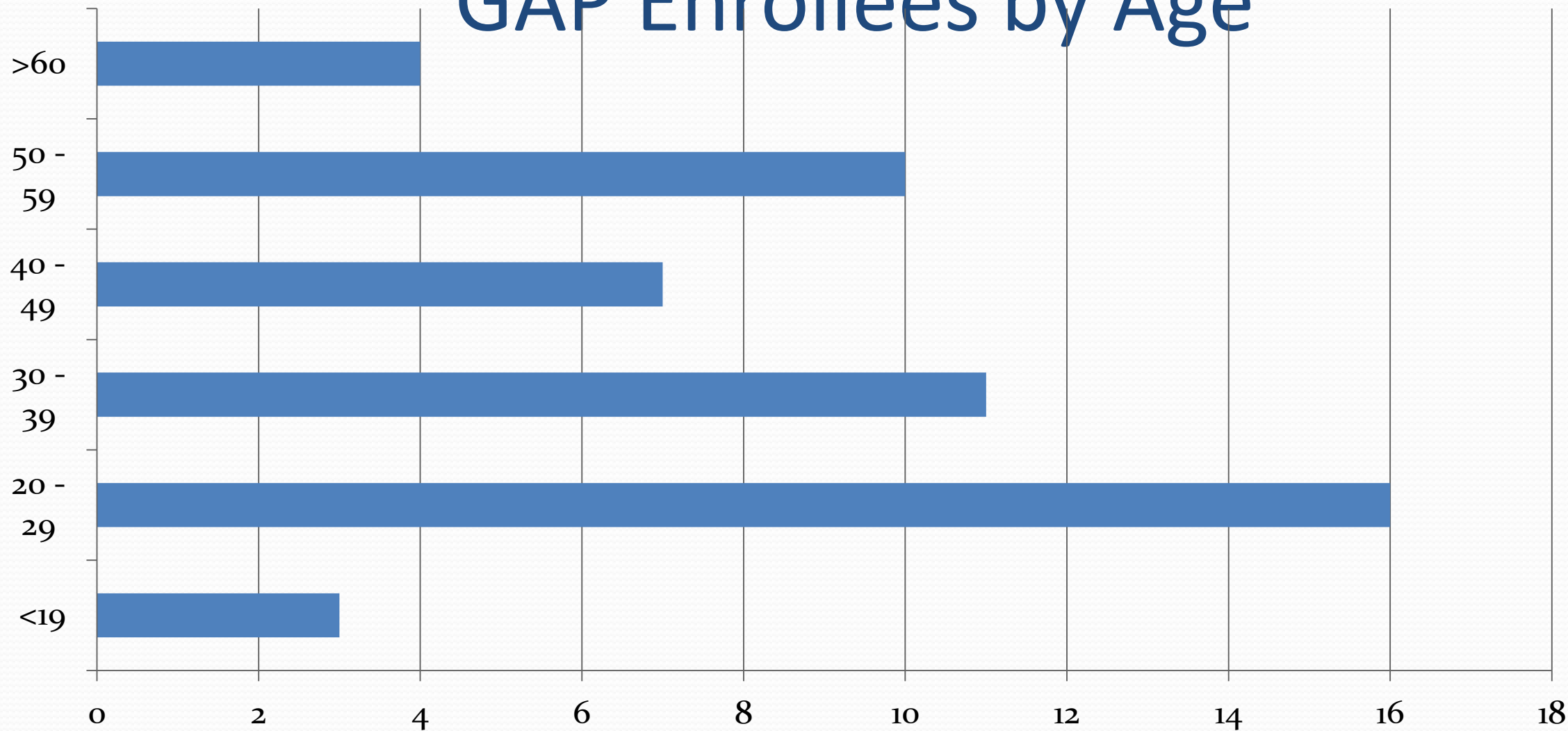
- Better Health in Busytown – brought together a wide variety of providers
- FQHC – over impaneled for uninsured patients – having to release patients from care
- Primary medical care seen as main need – specialty care can be provided when needed – Providence Charity Care program
- All primary care physicians are volunteering their services
- Decisions on what sort of care would be provided
- Data will be collected by PacificSource in order to be able to track the types of care, location of care, diagnosis and costs.

GAP Enrollment

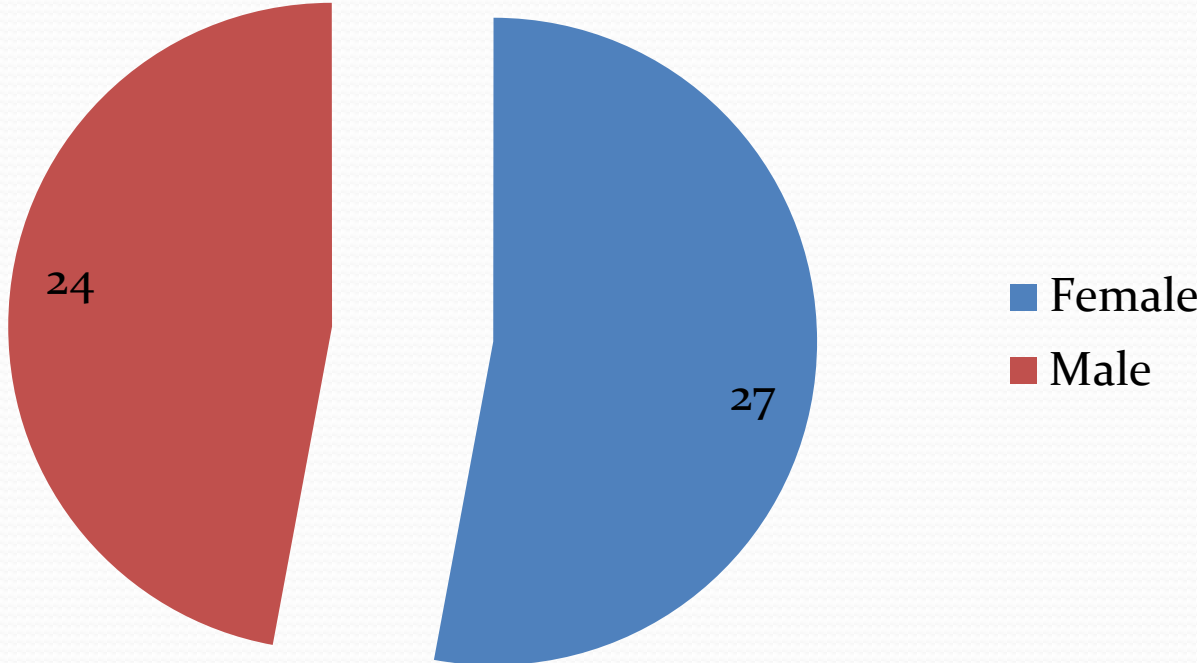
- 51 enrolled
- 69 Requests
 - Pending documentation (5)
 - Denials (13)
 - Not HRC resident (3)
 - Has OHP already (1)
 - No show for enrollment appointment (3)
 - Over income (6)



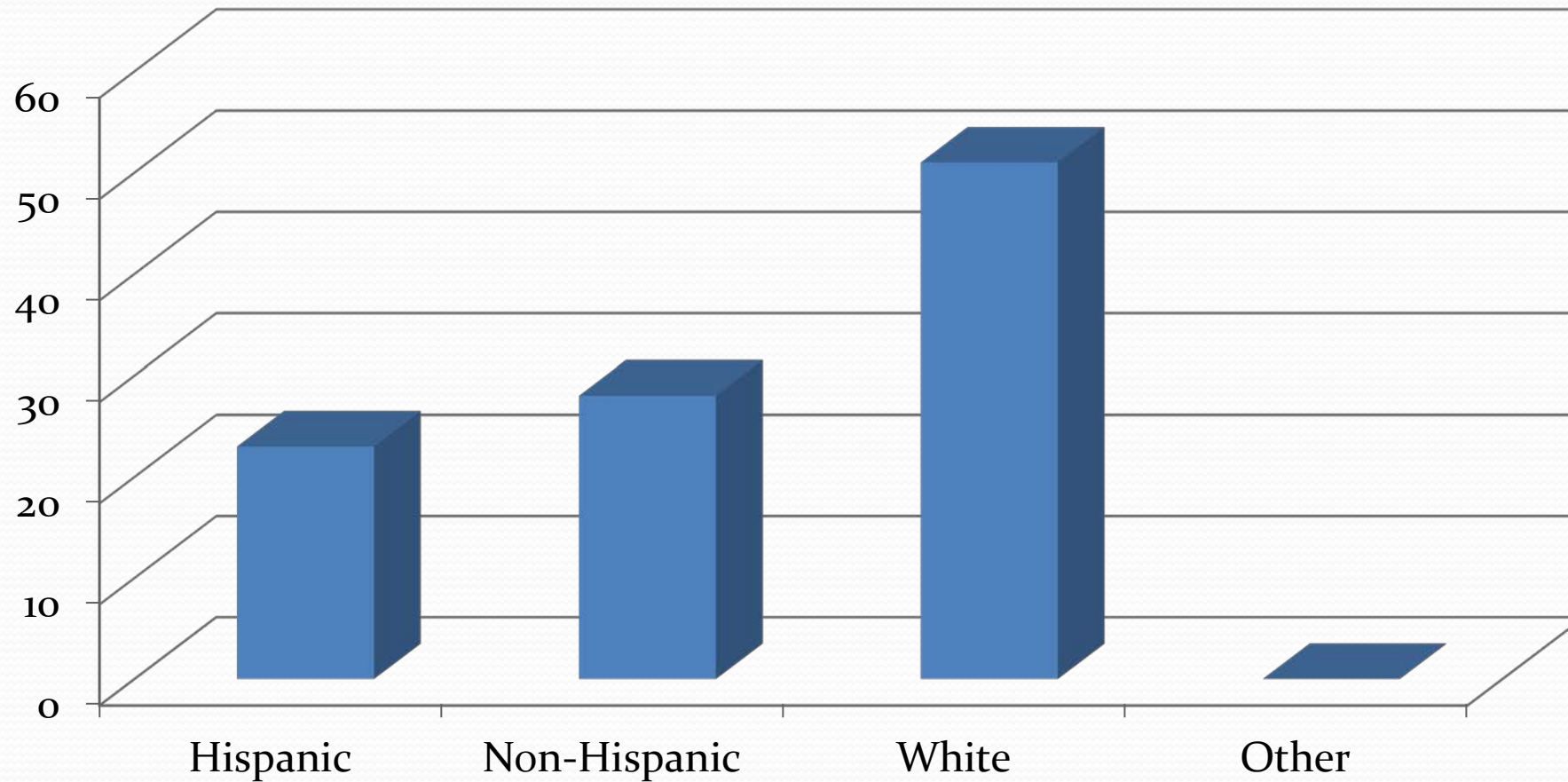
GAP Enrollees by Age



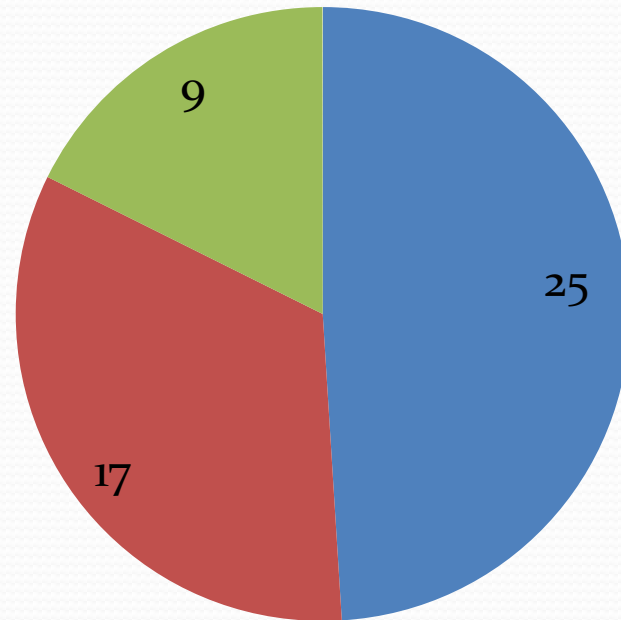
GAP Enrollees By Gender



GAP Enrollees By Ethnicity/Race

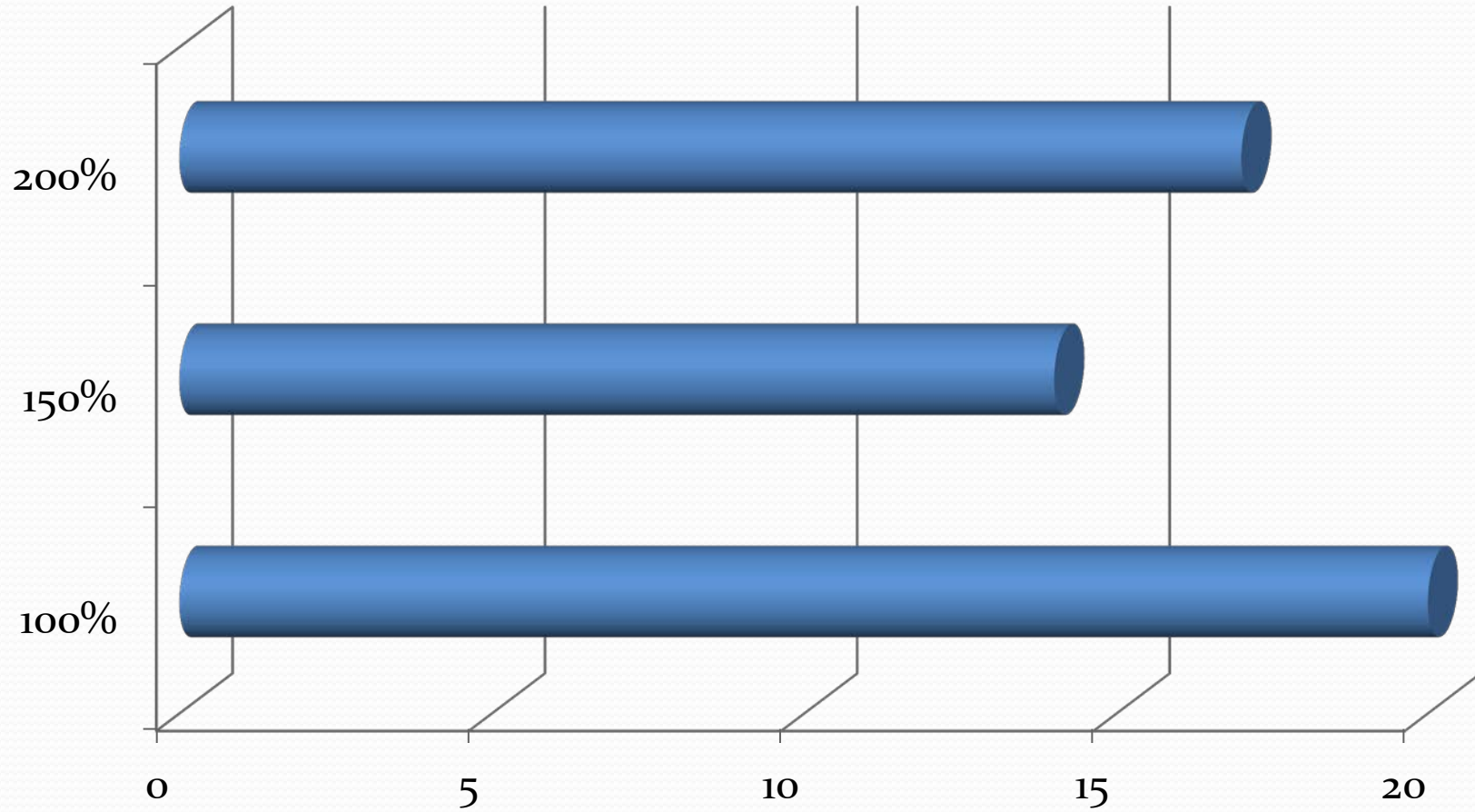


Language Preference of Enrollees

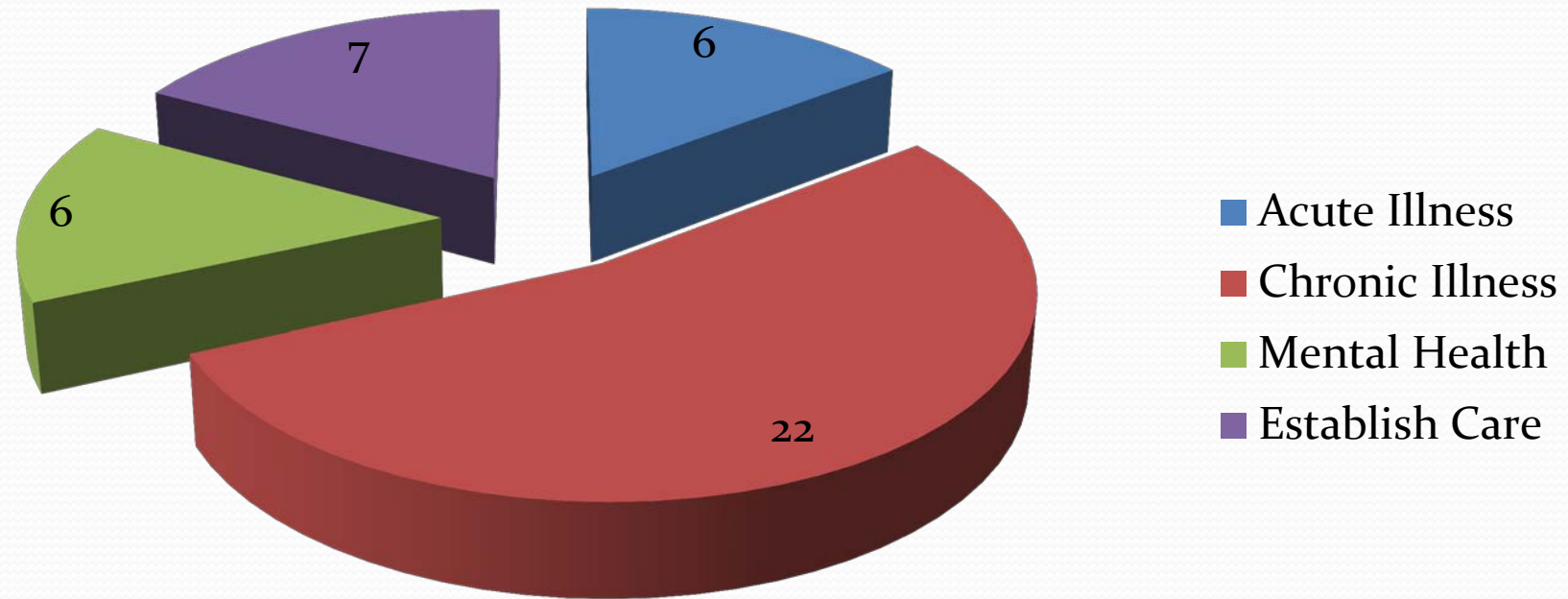


- English
- Spanish
- Either

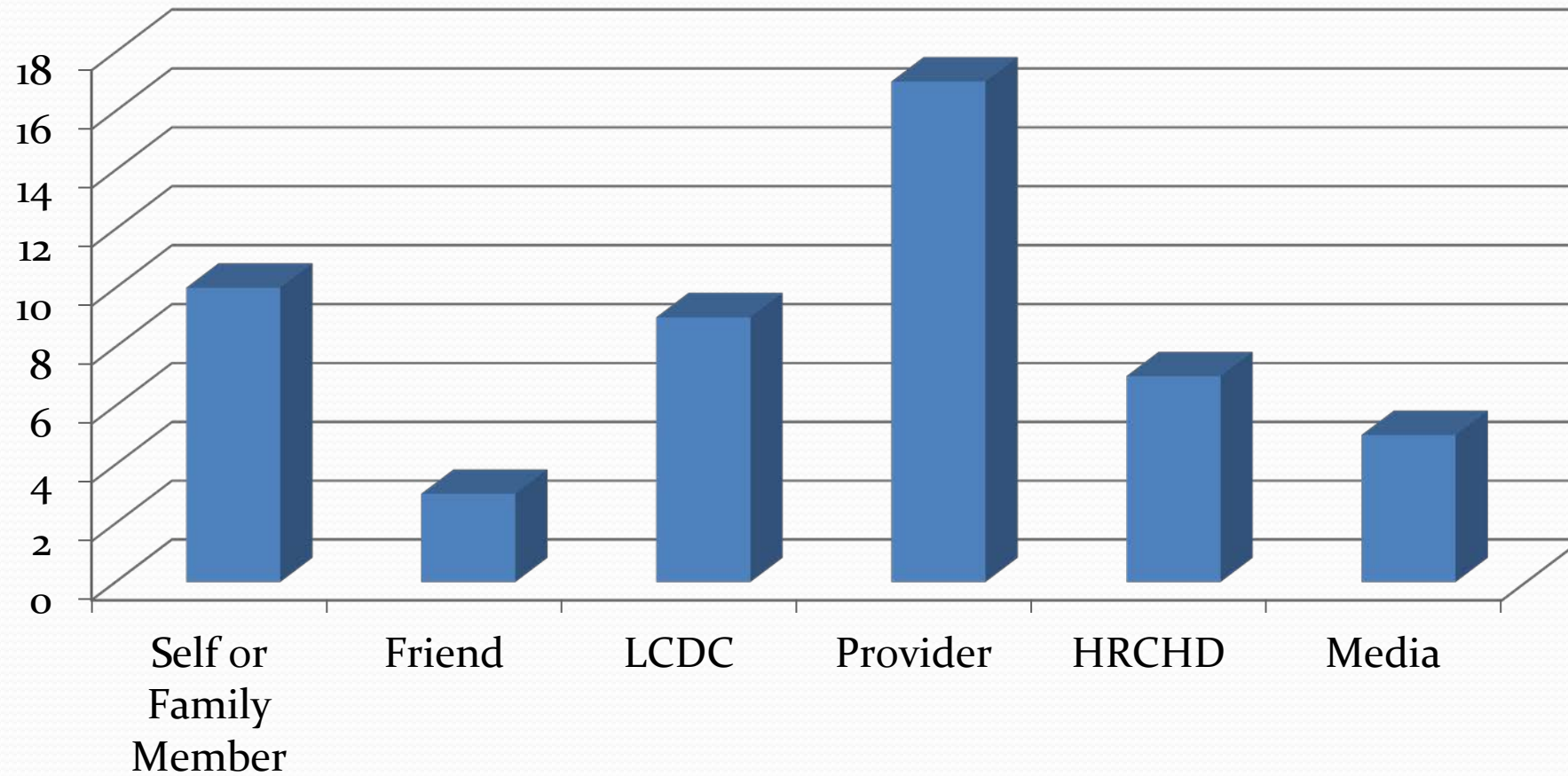
FPL Breakdown of Enrollees



Type of Medical Need



Referral Sources for Enrollees



Benefits to County Residents

- Many residents are getting care for long ignored conditions
- People are establishing a medical home or maintaining a medical home
- People are getting health maintenance exams for preventive care
- To date we have record of \$3351 in donated services – no PHRMH data as yet
- Parents are able to model good health care practices for their children
- Dental and vision care will be brought into the program through volunteer contributions
- When people are screened for eligibility they are also referred for social services, food stamps, OHP, and other services as appropriate
- 16 recorded visits