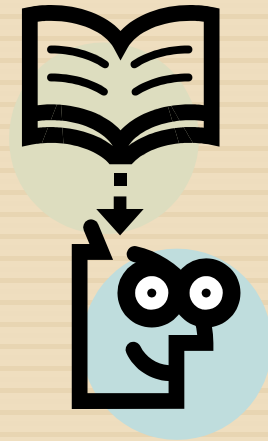


# LINKING OREGON'S COMMUNITIES THROUGH TECHNOLOGY

Telehealth on a Saturday morning!

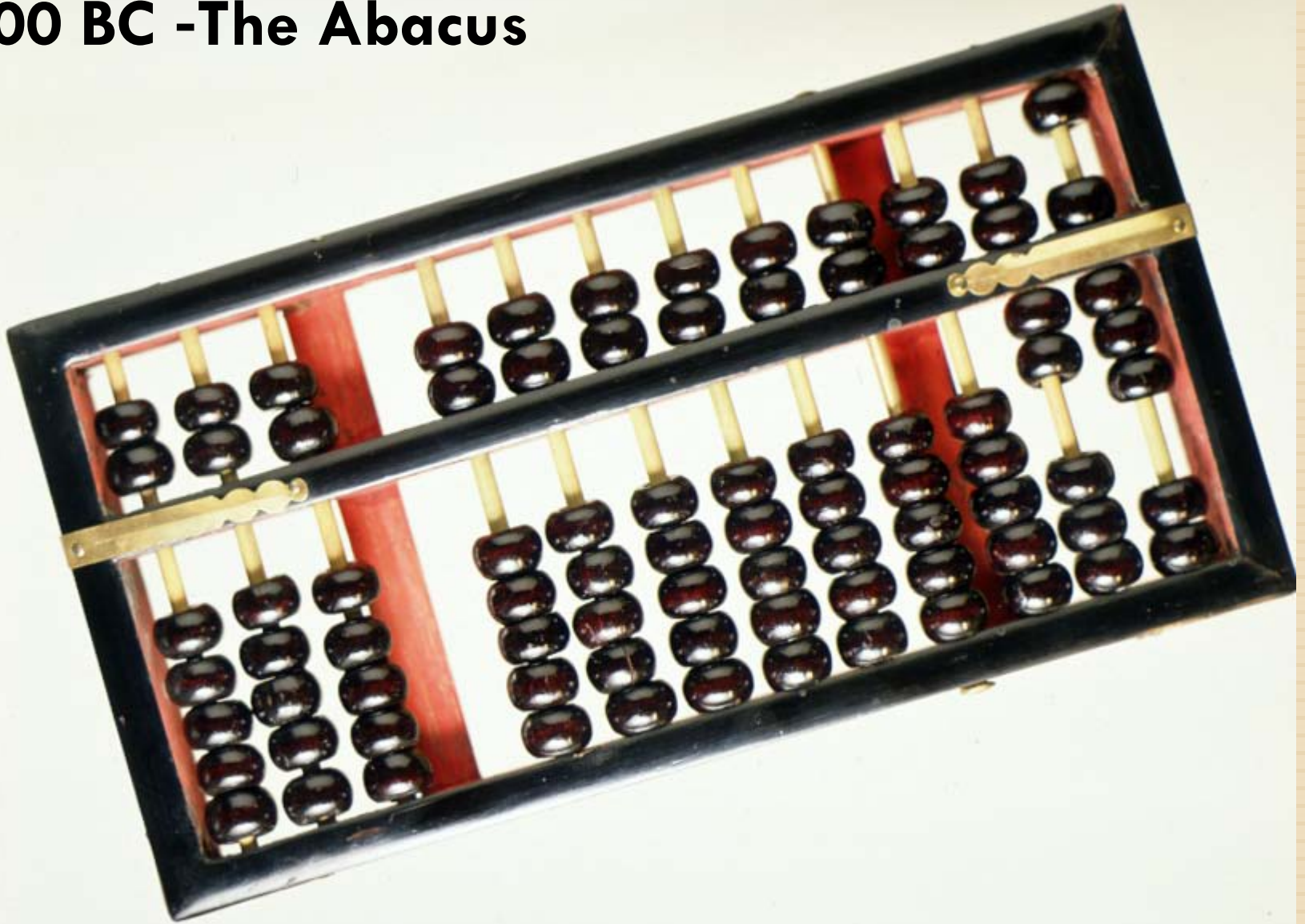
# HISTORY OF TECHNOLOGY..... IN 5 MINUTES OR LESS!



**4000 to 1200 BC -Records  
are kept on clay tablets.**



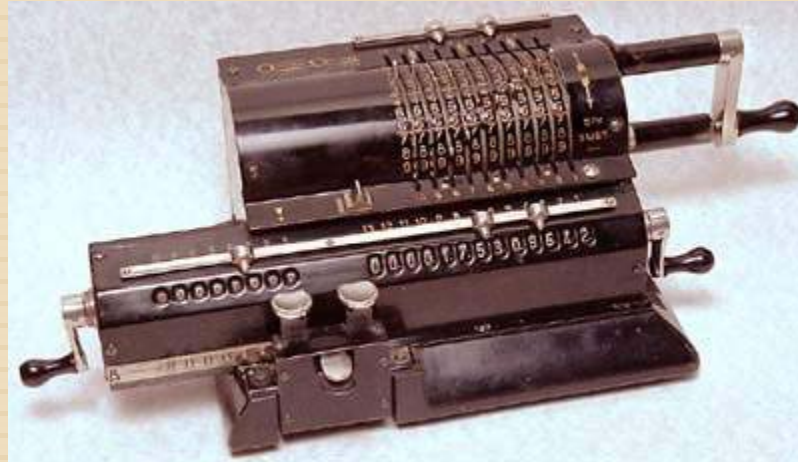
# 3000 BC -The Abacus



**In 1642 Blaise Pascal invented the *Pascaline* as an aid for his father who was a tax collector. (It could only add.)**



**Pinwheel calculator with 10-digit setting register,  
made in Sweden in 1945.**



**The Harvard Mark I computer which was built as a partnership between Harvard and IBM in 1944. This was the first programmable digital computer made in the U.S. The machine weighed 5 tons, incorporated 500 miles of wire, was 8 feet tall and 51 feet long.**



**The first-ever computer mouse in the hand of its inventor  
Doug Engelbart. -1968**





**1981-IBM introduced the first desk-top computer.**

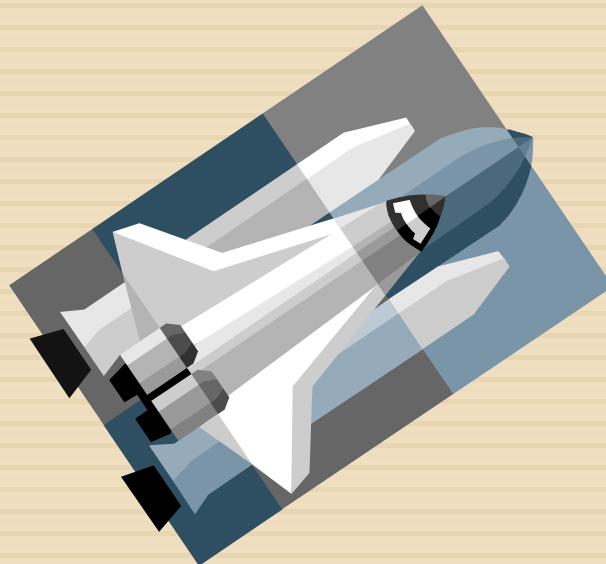


**Microsoft Version 1.0 was released in 1985, the more commonly known Windows version was released in 1990, which was version 3.1**



# NASA—A telehealth leader!

- NASA's efforts in telemedicine began in the early 1960s when humans began flying in space. Physiological parameters were telemetered from both the spacecraft and the space suits during missions.



# What is HIT?

- Health Information Technology (HIT) is the use of information and communication technology in health care
- HIT can include:
  - electronic health records (EHRs)
  - personal health records (PHRs)
  - e-mail communication
  - clinical alerts and reminders
  - computerized decision support systems
  - hand-held devices
  - other technologies that store, protect, retrieve and transfer clinical, administrative, and financial information electronically within health care settings.

# Rural Challenges

- Access to information on various health IT vendors
- Suitability of vendors' products for rural settings
- Interoperability requirements
- Problems obtaining ongoing health IT support
- Connectivity issues
- Difficulty collaborating and forming partnerships in rural settings
- Workforce

# Leveraging the Resources



It's being done successfully

Oregon Medical Board allows for the delivery

Oregon law mandates payment

There are Resources to assist

Click image below to launch video.



# Historical Volume-One Hospital

~4<sup>th</sup> Quarter 2008~

- 19 Patient Care Encounters
- 8 Outreach Education Experiences
- 8 Mother Baby Reunions
- *12 per month*

~October 2009~

- 31 Patient Care Encounters
- 3 Outreach Education Experiences

*34 in one month*



# Grande Ronde Hospital

Outreach  
Education

Perioperative Training/  
Interactive Surgery (St.  
Alphonsus)

Cardiology  
Grand Rounds

Echo Grand Rounds

Outpatient  
Services/Clinics

Cardiology AMI  
Support, (Boise)

Pacemaker  
Clinic, (Boise)

Cardiology Outreach  
Clinic, (Boise)

Dermatology  
(Washington State, in  
development)

Consulting  
Services

Intensive Care  
Consultations  
(Advanced ICU Care,  
St. Louis, MO)

CHF Clinic,  
St. Alphonsus  
Cardiology Clinic

After-hours  
Pharmacy (in  
development)

Foreign Language  
Interpretation  
(John Hopkins, in  
development)

Neonatology  
(St. Alphonsus, Boise)

Maternal Fetal Medicine  
(St. Alphonsus, Boise)

Rheumatology  
(in development)

Behavioral Health, (St.  
Alphonsus, Boise)