



PHPM The Liaison

January
2012

Grants

In this issue:

Grants

PHPM Staff News

- Grants, Publications, Presentations, Travel, Awards and Honors, Welcome, Events, Birthdays, Recipes
- Library news

Education Program News

- Thesis Defenses
- Call For Abstracts— OMPH Student Symposium
- Student Publications
- Preventive Medicine Residency News

Administrative Staff

Anne Stemedel
Administrator

Tree Triano
Education Manager

Mark Derby
Grants Contract Coordinator

Gloria Harrison
Administrative Coordinator & Newsletter Editor

Natalie Chin
Education Assistant

Hillary Regan
Residency Coordinator

For a hardcopy of The Liaison, contact Gloria Harrison in the PHPM Administrative Office: harrisog@ohsu.edu

New Applications:

- **Tom Becker/Steve Mansberger**, “Medicare/Medicaid Vision Impairment Project,” Center for Medicare & Medicaid Innovation: Health Care Innovation Challenge (CMMI).
- **Janne Boone-Heinonen**, “Connecting social and biological drivers of intergenerational obesity disparities,” National Institute of Diabetes and Digestive and Kidney Diseases: NIDDK Mentored Research Scientist Development Award (K01).
- **Janne Boone-Heinonen**, “Food service inspectors: a better way to measure the food environment,” NIH/CDC: Obesity Policy Research: Evaluation and Measures (R21).
- **Dongseok Choi**, “Multilevel High Resolution Analysis of Wait Time in Addiction Treatment Programs”, National Institute on Drug Abuse: Research Project Grant (Parent R01).
- **Dennis McCarty**, Substance Abuse and Mental Health Services Administration Indefinite Delivery Indefinite Quantity (SAMHSA IDIQ), Subcontract through JBS, Int’l.
- **Dennis McCarty**, “Integrated Treatment Capacity and Services to Persons with Co-Occurring Disorders,” National Institute on Drug Abuse: a competing supplement to his R01 award, “Integrating Addiction Treatment and Medical Care in a Commercial Health Plan.”
- **Thuan Nguyen**, “Collaborative Research: Advancing Computerized Statistics”, National Science Foundation: Computational and Data-Enabled Science and Engineering in Mathematical and Statistical Sciences (CDS&E-MSS).
- **Seth O’Neal**, "Optimizing ring-screening strategy for control of Taenia solium infection," NIH Fogarty International Center: Brain Disorders in the Developing World: Research Across the Lifespan (R01).
- **Ana Quiñones**, “Exploring race/ethnic disparities in the care coordination of older, multimorbid patients,” Medical Research Foundation New Investigator Grant.
- **Traci Rieckmann**, “A Brief Dental Clinic Intervention to Reduce Misuse of Prescription Opioids,” National Institute on Drug Abuse: Pilot and Feasibility Studies in Preparation for Drug Abuse Prevention Trials (R34).
- **Traci Rieckmann**, “Central Oregon Integrated Care Network: Global Payment Reform in a Captured Rural Community,” Center for Medicare & Medicaid Innovation: Health Care Innovation Challenge, subcontract through St. Charles Health System (CMMI).
- **Traci Rieckmann**, “Brief Provider Intervention to Reduce the Misuse of ADHD Stimulant Medication,” National Institute of Child Health & Human Development: Healthy Habits: Timing for Developing Sustainable Healthy Behaviors in Children and Adolescents (R01), subcontract through Univ. of Michigan.

Please notify Mark Derby at 4-0181 or by email at derbym@ohsu.edu if you intend to apply for a grant.



Public Health and Preventive Medicine

Faculty and Staff—NEWS

Publications:

Joshua R. Buser, Jennifer Maire, Art Riddle, Xi Gong, **Thuan Nguyen**, Kerst Nelson, Ning Ling Luo, Jennifer Ren, Jaime Struve, Larry S. Sherman, Steven P. Miller, Vann Chau, Glenda Hendson, Praveen Ballabh, Marjorie R. Grafe, and Stephen A. Back (2012), Arrested Preoligodendrocyte Maturation Contributes to Myelination Failure in Premature Infants, *Annals of Neurology*, 71:93–109.

Books:

Gustafson, D.H., Johnson, K.A., Capoccia, V., Cotter, F., Ford, J.H., Holloway, D., Lea, D., **McCarty, D.**, Molfenter, T. & Owens, B. (2011). *The NIATx Model: Process Improvement in Behavioral Health*. Madison, WI: Center for Health Enhancement Systems Studies, University of Wisconsin.

Since 2002, **Dr. Dennis McCarty** and the NIATx Evaluation Team (Ana Hilde, Caitlin Rasplca, Carla Green, Eldon Edmundson, Holly Fussell, Jennifer Wisdom, Katie Riley, Kim Hoffman, Luke Bergman, Marie Shea, Traci Rieckmann) have been collaborating with the University of Wisconsin to implement and evaluate the Network for the Improvement of Addiction Treatment (NIATx). NIATx teaches addiction treatment centers to use process improvement tools in order to reduce days waiting for treatment and to enhance retention in care. The program began with 10 sites and currently more than 2,000 treatment centers participate. The best of NIATx is now available in a book.

Awards and Honors:

An interview with **Jodi Lapidus** was featured in the January 30th School of Medicine newsletter in a section called Why I Teach, which profiles the recipients of the 2011 “Faculty Excellence in Education Award” and asks them the question, “Why do you teach?”

"My parents were teachers, and as a young person, I swore that I would never end up like them," said Dr. Lapidus. So what attracted her to teaching? "Initially it was the cool, cutting-edge research," she said. "The chance to convey concepts in new and different ways is extraordinarily satisfying." To read the full story, please visit this link:

<http://ozone.ohsu.edu/blogs/clinician-commons/2012/02/15/why-i-teach-jodi-lapidus-phd/>

Dr. Bill Lambert's HEY Project video was recently featured in a post on the Everyday Leadership blog*: <http://blog.everydayleadership.org/2012/02/core-values/>

In the video, Native youth in Idaho share the values they learned from their families as part of a health promotion program that empowers both the youth creating the video and triggers reflection to the viewer. **Nichole Hildebrandt**, Senior Research Assistant working with the youth in Idaho, points out that the comments about the film at the bottom of the page are especially nice!

*The Everyday Leadership blog is a collection of learning and training tools designed to support global health leaders and managers.

The Department of Public Health and Preventive Medicine Faculty and Staff NEWS (continued)

Travel:



Sapporo Snow Festival

Tomi Mori visited the Department of Global Health & Epidemiology, Hokkaido University of School of Medicine, Sapporo, Japan, on January 19, 2012 and gave a biostatistics seminar on oncology clinical trial designs and advertised our new biostatistics programs (certificate and MS) to their graduate students. Dr. Hiko Tamashiro, (http://www.sustain.hokudai.ac.jp/researchers_in_network/hidehiko_tamashiro/index.php), department chair, was a former student of Dr. Eun Sul Lee. Sapporo (famous for its snow festival, among others) is one of Portland's sister city. Tomi also visited Ms. Michi Goto, who is in charge of promoting and facilitating sister city activities and encouraged Tomi to help develop an educational and research relationship between OHSU and Hokkaido University School of Medicine.

From January 11 to January 21, **Dennis McCarty** and his wife Sarah journeyed to Ecuador for a bird watching trip. "The Amazon rainforest is a vast and complex set of ecosystems and niches," says Dennis. "[There are] fast flowing rivers, glass lakes, winding streams, and steamy swamps. From the forest floor to the top of the canopy the birds and animals change. Ecuador has over 1,300 types of birds (including 136 types of humming-birds). Birds on the forest floor are dark, furtive and difficult to see. Many live in harmony with the army ant swarms feeding off the insects, amphibians, and small animals that flee from the marauding ants. As a group, they're called ant birds. The challenge is there are many kinds and types. Hummers are everywhere, sipping nectar high and low with bills short, long, curved, and straight – amazing diversity. Tree tops include troops of squirrel monkeys, the evil looking black-mantle tamarinds, and the loud bellowing red howlers. The assorted flycatchers and tanagers are a bonus. The sky above fills with four or more types of vultures soaring on thermals and assorted eagles and falcons looking for meals."



Dennis and Sarah on a bridge that spans across the canopy of the rainforest.

Events:

GRAND ROUNDS CALENDAR

- 15-Mar-12 **Tom Greene, PhD**, University of Utah **Mac Hall 1162**
- 19-Apr-12 **Diane Rohlman, PhD**, CROET **Mac Hall 1162**
- 17-May-12 **Dr. Donald Rubin, PhD**, John L Loeb Professor of Statistics, Harvard University **Mac Hall 1162**
- 21-Jun-12 **Preventive Medicine Residents** **TBA**

Please note venue locations above. Food and drink are always provided.

The Department of Public Health and Preventive Medicine Faculty and Staff NEWS (continued)

Epidemiologists' Forum presents:

Bisphenol-A (BPA), Endocrine Disruptors and the Precautionary Principle

Greg Hill, Ph.D., Chair, Department of Mathematics, University of Portland

Steven Kolmes, Ph.D., Chair, Environmental Science Department, University of Portland

Wednesday, February 29, 2012

4:00 - 6:00 pm

(Presentation 4:30-5:30pm; Networking 4:00-4:30 & 5:30-6:00pm)

Portland State Office Building

800 NE Oregon Street, Portland, Room 1D

Sponsors: Oregon Public Health Association (Epidemiology and Biostatistics section), Oregon Public Health Division, OHSU Dept of Public Health and Preventive Medicine, Center for Healthy Communities

The Preventive Medicine Residency presents Health Policy Symposium

Sustainable Food Systems: Policy Challenges & Opportunities

Friday, March 2, 2012

1pm – 5pm

Portland State Business Accelerator building

Mt. Hood Conference Room

2828 SW Corbett Ave, Portland, OR 97201

To register for this event please go to: www.ohsu.edu/public-health/policysymposia

(For more information, please see the flier at the end of this newsletter.)

PHPM Birthdays

FEBRUARY

8-Feb Katie Riley Assistant Professor Emerita



MARCH

1-Mar Carrie Tillotson, Research Associate
 4-Mar Lynn Kunkel, Senior Research Associate
 10-Mar Ana Quinones, Assistant Professor
 12-Mar Mitch Greenlick, Professor Emeritus
 14-Mar John Stull, Assistant Professor
 25-Mar Ruth Ann Tsukuda, Assistant Professor

NEWSLETTER NEWS—The Liaison Is Becoming a Blog

By Gloria Harrison

As a reminder, [please let me know as soon as important news occurs.](#)

While PHPM doesn't have its own blog just yet, I will begin to push high-impact and timely information out to the blogs that already exist on the Ozone. These include: [Research News](#), [Staff Thoughts](#), [Staff News](#), [Web Strategies](#), [TechTalk](#)

We need content contributors to submit fully written, fact-checked stories about specific, pertinent topics. And we need them to be timely. Please write it in the third person, in full sentences, and with proper capitalization, spelling, grammar, and punctuation. News that is not submitted in this format runs the risk of not being accepted for publication on the Ozone blogs and delays the publication of The Liaison.

Stay tuned for more information about our blog and, in the meantime, keep the information coming!

Recipes

Gluten and Dairy Free Orecchiette Pasta with Peas and Ham

By Whitney Ashe

Ingredients:

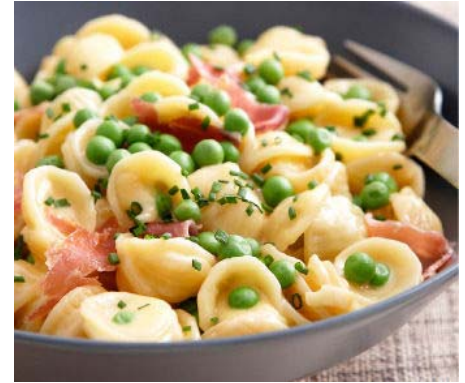
1 pound quinoa macaroni pasta (1 box)
 3 tablespoons earth balance buttery spread
 1 small white onion, diced (about ½ cup)
 ½ cup frozen peas
 4 ounces cooked ham, cut into cubes
 ¾ cup plain soy creamer (I use the Silk brand)
 ¼ cup soy mozzarella cheese, shredded
 Salt and pepper to taste

Preparation:

- Warm butter in medium saucepan over medium-low heat. Add in onion and cook for roughly 4 minutes,

until translucent.

- Add peas and creamer to the pan and cook for about 5 minutes, stirring. Stir in mozzarella cheese and ham and continue to simmer for 10 to 15 minutes. Season with salt and pepper to taste
- Begin to cook pasta according to the package directions (boil for approximately 9 minutes)
- Once pasta is cooked, drain and add to the sauce.



Enjoy!

Library News by Laura Zeigen

Faculty of 1000 comes to OHSU!

The OHSU Library recently obtained an institutional subscription to Faculty of 1000. Faculty of 1000 is a service for researchers and clinicians that provides ratings of and commentary on scientific research papers, including on public health and epidemiology and related topics. F1000 acts as a filter, identifying and evaluating the most significant articles from biomedical research publications.

For more information, go to <http://www.ohsu.edu/xd/education/library/about/whats-new/faculty-of-1000-comes-to-ohsu.cfm> or click on the link to Faculty of 1000 in “Recent News” section of the OHSU Library’s home page.

OHSU Student E-Book Use Survey

Students! We want to hear from YOU! OHSU Library is interested in how, when and why students use electronic books. The goal of this survey is to:

- Determine awareness level among students of e-book availability
- Identify motivation for students to use e-books
- Understand how and when students access e-books

We value your time and the effort it takes to fill out this survey. It is brief and should take 10 minutes or less to complete. If you complete the survey and give us your name you will be entered into a drawing for one of four \$25.00 Amazon gift cards.

The survey will run through March 5th and can be found here: <http://www.surveymonkey.com/s/StudentEbookUse>
 Please feel free to distribute this information widely throughout the OHSU STUDENT community.

This information also at: <http://www.ohsu.edu/xd/education/library/about/whats-new/student-e-book-survey.cfm>

MPH Program News

Upcoming MPH Thesis Defenses

The Department of Public Health and Preventive Medicine announces the following MPH Thesis Defenses:

Emily Carter:

Does gestation anemia affect maternal morbidity during delivery?

Friday, March 2, 2012, Seminar: 2:00 pm – 3:00 pm

School of Nursing, Room 122, 3455 SW US Veterans Hospital Road, Portland, OR 97239

Questions: call 503.494.1158 or email chinn@obsu.edu

Call For Abstracts—OMPH Student Symposium

On April 20th at the Native American Student Community Center at PSU, the annual OMPH student symposium will take place. The theme is GO GAGA for Public Health: Improving Our Collective Health. While participation is not a mandatory part of graduate school, we are urging more students to take part this year as an opportunity in a low risk environment to present their knowledge, experience, and passions to colleagues, a skill that we believe is critical for all types of jobs. Topics for posters or oral presentations can be based on research, field experiences, case studies, or literature reviews. All abstract submissions will be accepted. More information will be forthcoming.

All students of the OMPH are invited to submit abstracts for an oral or poster presentation at the Symposium. Visit the OMPH website for all the details and links: www.oregonmph.org/symposium. Please read the “Call for Abstracts” and “Abstract Rating Sheet” links for more information.

DEADLINE for submission is Sunday March 11, 2012.

At the request of students, **we are also holding several “How to prepare a poster?” panel discussions** with faculty and recent alumni. Dates are February 24 and April 6 at PSU, and date TBD at OSU. Watch the OMPH listserve for details.

Student Publications

Shana Kusin, MD, Jeremy Tesar, MD, Ben Hatten, MD, B. Zane Horowitz, MD, Robert Hendrickson, MD, Oregon Poison Center; Richard Leman, MD, Oregon Public Health Div. Genevieve Buser, MD. [Severe Methemoglobinemia and Hemolytic Anemia from Aniline Purchased as 2C-E \(4-ethyl-2,5-dimethoxyphenethylamine\), a Recreational Drug, on the Internet - Oregon, 2011.](#) Centers for Disease Control and Prevention (CDC). MMWR Morb Mortal Wkly Rep. 2012 Feb 10;61:85-8.



Preventive Medicine Residency News

The Preventive Medicine Residency welcomes Paul Lewis to the group. Paul is a pediatrician with training in Pediatric Infectious Disease who has worked at OHSU for a number of years doing clinical HIV work and serving as Hospital Epidemiologist & Chair of the Infection Control Committee. For the past 7 years he has been working in public health - most recently as Deputy Health Officer for the Tri-County Health Department. He will complete his MPH in Health Promotion at PSU and his practicum assignment will be split between ongoing work at Clackamas/Multnomah/Washington counties and activities/projects within the Oregon Health Authority. In his spare time he enjoys music, non-fiction reading, and skiing.

Please join us in welcoming Paul to the group when you see him!!



Preventive Medicine Health Policy Symposium

Friday, March 2, 2012
1:00 pm– 5:00pm



Sustainable Food Systems: Policy Challenges & Opportunities

Public health is heavily influenced by local, regional, and national food and agriculture policies that affect how, what, when, and where we eat. This symposium will bring together various perspectives on health, food and sustainability to identify policy challenges and opportunities. Participants will engage in rich discussions designed to explore key aspects of food policy and to identify ways to motivate individuals to participate actively in the food policy process.

This symposium will:

- Build understanding of the connections among public health, sustainability and food policy
- Increase awareness of food policy issues, key decision-makers, and policy structures
- Provoke new ideas about how to mobilize individuals and institutions to take action to create and implement progressive food policies
- Create opportunities for participants to engage in shaping food policy locally, regionally and nationally as it relates to public health and sustainable practices

Portland State Business
Accelerator building
Mt. Hood Conference Room
2828 SW Corbett Ave
Portland, OR 97201
(GPS directions: intersection of
SW Corbett Ave & SW Meade St)



To register for this event go to:
www.ohsu.edu/public-health/policysymposia

Sustainable Food Systems: Policy Challenges & Opportunities

Agenda for March 2, 2012

Time	Item
12:30 pm	Registration
1:00 pm	Welcome and Introductions
1:15 pm	Plenary: Framing the Food Policy and Sustainability Conversation
2:00 pm	Small Group Discussions: <ol style="list-style-type: none"> 1) Food Justice: Exploring the Dynamics of Hunger and Community Food Security 2) Implications of the Farm Bill for Food & Health Policy 3) Buying Local: Better Food in Institutions 4) The Role of the Farm in Framing the Food Policy Conversation 5) Local Sourcing: The Chef's Influence on Policy 6) Food as a County Issue
3:00 pm	Plenary: Group Reports and Call to Action
4:00 pm	Reception sponsored by PSU's Institute for Sustainable Solutions and Food Front Cooperative Grocery and No-Host Bar provided by Personal Bartenders
5:00 pm	Adjourn

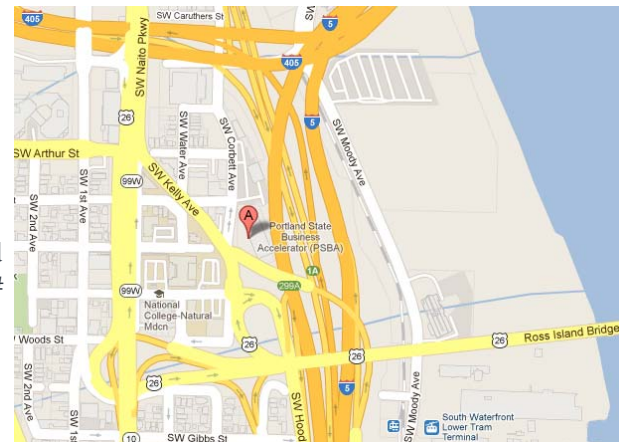
Space is limited so pre-registration is required!

To register for this event, go to www.ohsu.edu/public-health/policysymposia

Transportation & Parking Options: Parking passes available for parking in the Portland State Business Accelerator Building parking lot behind the building.

The Portland State Business Accelerator building is located on the Tri-Met #9, 17 or 19 bus line (Tri-Met stop ID# 3116) and is also approximately a 10 min walk south of the Portland Streetcar stop at SW Harrison (Tri-Met stop ID# 12377) or a 10 min walk north of the lower Aerial Tram station (Tri-Met stop ID# 128450).

For more detailed directions go to: <http://www.psba.pdx.edu/directionstransit>.



This symposium is made possible by a training grant through the Health Resources and Services Administration (D33HP21197),

The James F. And Marion L. Miller Foundation, and:

OHSU Department of Public Health and Preventive Medicine

OHSU Preventive Medicine Residency Program

Portland State University, Institute for Sustainable Solutions

Portland State University, Mark O. Hatfield School of Government