

# CT Department Work Flow Tip

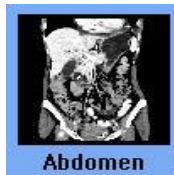
## Exam: CTA Enterography for Occult GI Bleed(Multiphase)

QDOC Exam Codes Possible: **CABPELA+**

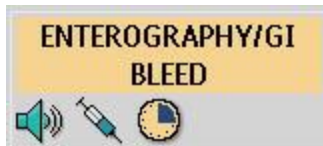
**Protocol required**

Systems: 16 slice to 256 slice

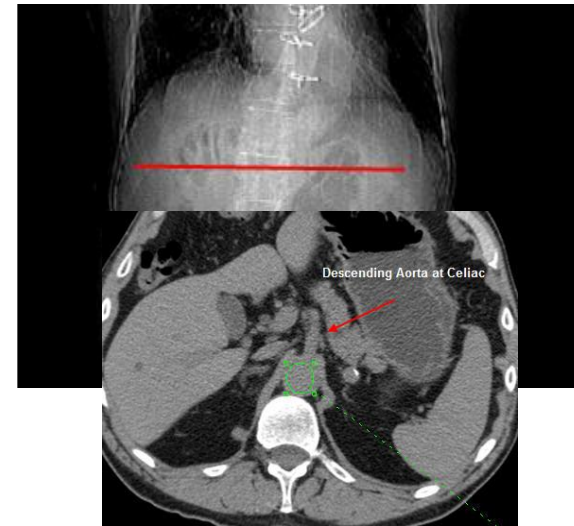
Protocol Location:



Exam:



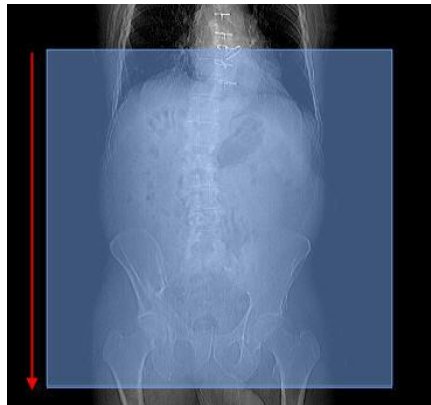
- 1. Scout: AP(180) 550-650mm Scan Length
- Breath Hold: inspiration
- 2. Locator/Tracker: Descending Aorta(Location of Celiac Artery)
- 3. CTA Arterial: 2mm x 1mm
- 4. MPR: Coronal 2mm x 2mm
- MIP: Coronal 10mm x 2.5mm
- 5. Enteric Phase: 2mm x 1mm(25sec)
- 7. MPR: Coronal 2mm x 2mm
- MIP: Coronal 10mm x 2.5mm
- 8. Delayed Phase: 2mm x 1mm(80sec)
- 9. MPR: Coronal 2mm x 2mm
- MIP: Coronal 10mm x 2.5
- 8. IV access: 18g -20g
- 9. PO Prep: Volumen – 1st bottle drink 0 min, 2nd bottle 15min, 3rd bottle 30min  
(Do not combine bottles in a Large Cup) 250ml of Water(NPO 4hrs)
- 10. Contrast: Omni 350 125cc
- 11. Contrast Rate: 4.0 to 5.0cc per sec.
- 12. Contrast delay: Bolus Track – Minimum Delay post trigger (post Threshold 150hu)



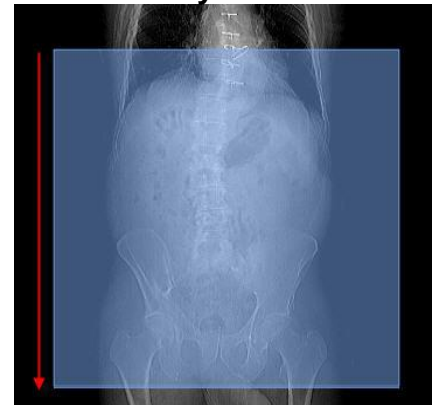
**Angiogram**



**Enteric Phase**



**Delayed Phase**



**Coronal  
Avg and MIP  
On every phase**



- **Prep:** [Contrast Questionnaire](#) and [Current Labs](#) Needed.
- Complete exam in QDOC

Billing: Contrast

If you draw labs bill venipuncture, bun and creatine (CHH only bill venipuncture).

- For In-Patients Order and MAR all contrast once given.
- If there are any questions about Questionnaire, prep, IV Contrast , or Protocol contact the Protocolling Rad.

