

CT Department Work Flow Tip

Exam: DIAMOX (Brain Perfusion x 2)
(Review Attached Documents)

QDOC Exam Codes Possible: [CCEP-+](#)

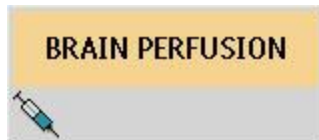
Protocol Required

Systems: 64 slice to 256 slice

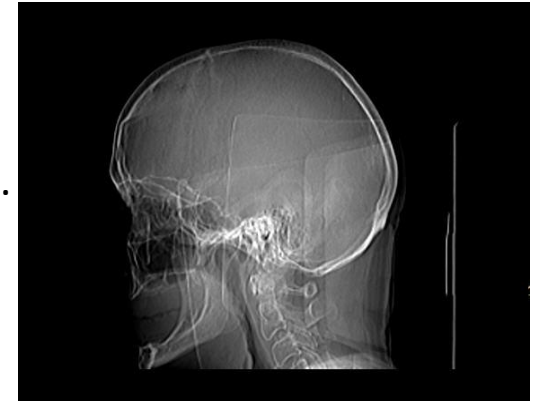
Protocol Location:



Exam:



1. Scout: Dual 275 – 300mm
Breath Hold: None
2. Head W/O: 5mm x 5mm
3. Perfusion 1(injection): 5mm x 10mm x 30(4cm of coverage on 64 and 128slice)
5mm x 10mm x 30(8cm of coverage on 256slice)
Note start and end location.
4. Injection of DIAMOX: **Repeat perfusion scan 20 minutes after start of diamox injection .**
4. Perfusion 2(injection): 5mm x 10mm x 30(4cm of coverage on 64 and 128slice)
5mm x 10mm x 30(8cm of coverage on 256slice)
Repeat exactly as previous.
4. IV access: 18g -20g
5. PO Prep: None
6. Contrast: 40cc Omni 350 x 2
40ml Saline x 2
7. Contrast Rate: 5.0cc per sec.
8. Contrast delay: **This isn't a SAS capable protocol, the injection and acquisition have to be started simultaneously. If possible to Position the head with the chin down on the ICT since tilt isn't possible, to avoid the eyes as much as possible.**

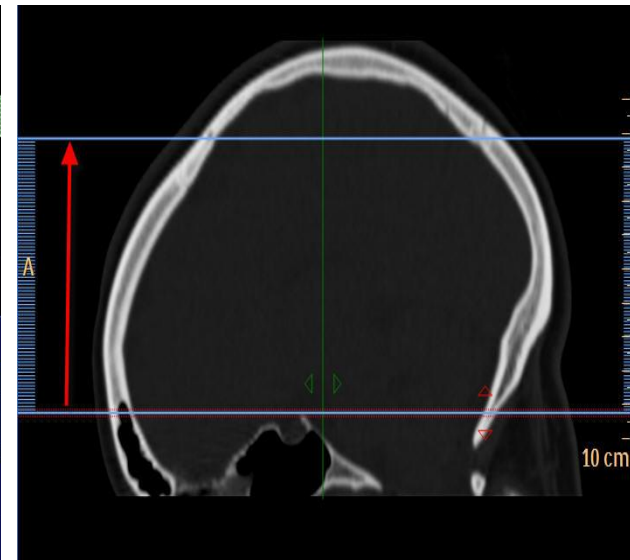
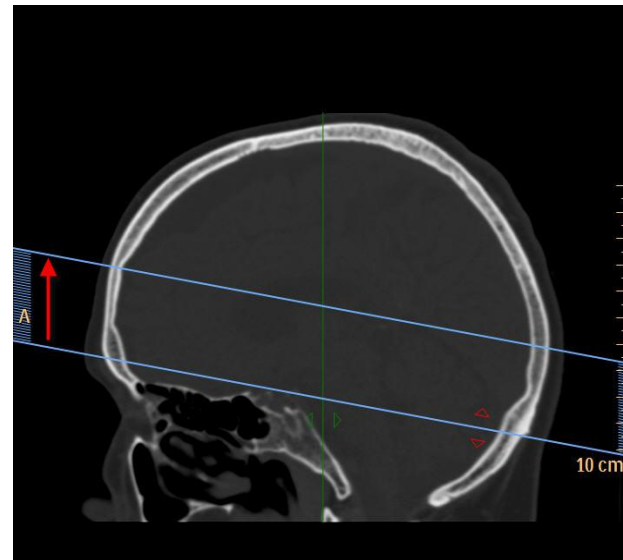
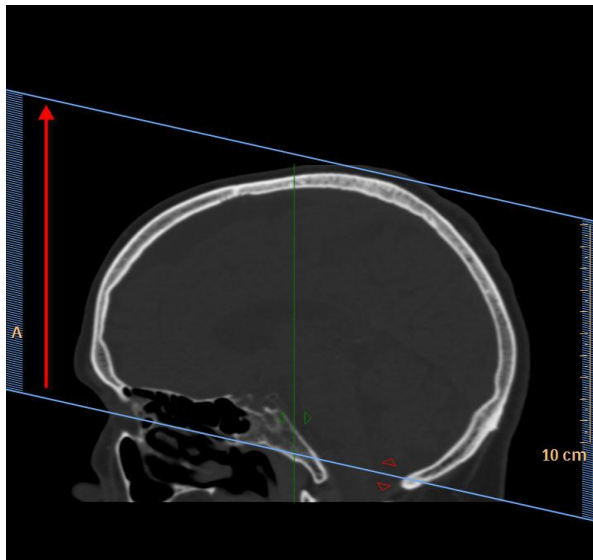


Scout

Head W/O

64 slice Perfusion

256 slice Perfusion



- **Prep:** [Contrast Questionnaire](#) and [Current Labs](#) Needed.
- Complete exam in QDOC

Billing: Contrast

If you draw labs bill venipuncture, bun and creatine (CHH only bill venipuncture).

- For In-Patients Order and MAR all contrast once given.
- [Correction to documents attached, no longer are two IV locations needed, single site maybe used per LP Riccelli.](#)
- [If there are any questions about Questionnaire, prep, IV Contrast , or Protocol contact the Protocols Rad.](#)

