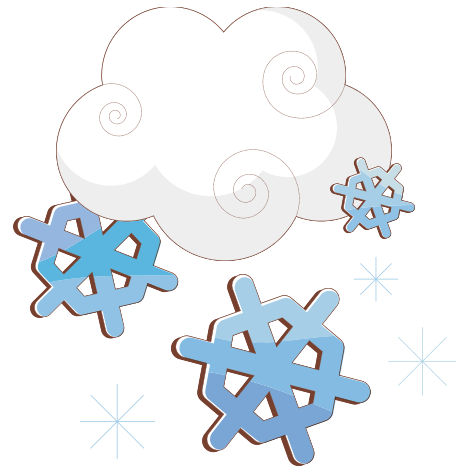


## What to do in Case of Inclement Weather

Winter is upon us, and it's time to plan for the possibility of bad weather coinciding with classes. We understand that our students and instructors are coming to campus from a variety of locations including the metro-area, Oregon and Washington, and even California and Alaska. We expect that as professionals, you make a diligent effort to attend class while being safe. Here is how we recommend proceeding in inclement weather.



1. Call the **OHSU Alert Line** at **503 494-9021**. This pertains to OHSU as a whole, including the emergency room and children's hospital. While it may not directly pertain to your class, it's a good starting point. If the message indicates that only essential personnel are expected, stay home. If not, continue reading.
2. Review the **road conditions** between yourself and campus ([ODOT](#), etc.) and consider **alternative transportation** (carpooling, [Trimet](#), etc.). In bad weather some bus routes are re-directed to the base of the tram. Students can ride the Streetcar and Tram for free with their OHSU ID.
3. Use your **professional judgment**.

As a student, **if you are unable to make it to class** or will be late due to weather conditions, **notify your instructor**. There will most likely be an alternative assignment to complete in lieu of class. You and your instructor will work that out together.

If an **instructor cancels class** (or has a later start time) due to weather, they will **email you at least 1 hour in advance of the class start time** using the mailtool in Sakai. Additional information about making up the missed class will subsequently be provided (this may include conference calls, alternative assignments, group meetings, etc.).

**Faculty, if you need to cancel class** or delay class start, we ask that you give students at least 1 hour's notice using the mailtool in Sakai. Please include "class canceled" or "class delayed until 10am," as examples, in the subject line.

